

3.1 lbs. of LARRO will produce 1 lb. of LIVE FRYER

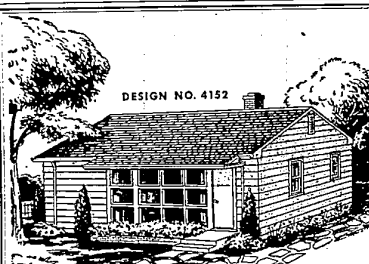
Repeated tests at Larro Research Farm show that with litters of eight only 3.1 lbs. of Larro Green Pellets for Rabbits are required to produce 1 lb. of live fryer, including feed for the doe 30 days before kindling and for 8 weeks after.



MILLERS OF FLOUR AND FEED FOR OVER 50 YEARS

FARMINGTON MILLS

ESTABLISHED 1895 L.F. GILDEMEISTER, OWNER
33408 STATE ST. FARMINGTON - PHONE 0076



DESIGN NO. 4152

FOUR ROOM HOME FOR A Moderate Budget

• This smartly designed small home vividly illustrates how maximum home value can be secured through professional planning. The architect has planned four lovely rooms within 710 square feet of floor area. When you see the plans, you will be impressed by the comfortable living that can be obtained on a moderate budget. There are scores of other modern homes in our Weyerhaeuser 4-Square Home Building Service, including a wide variety of sizes and exterior treatments. Each was architect-designed for greater home value. Come in and study them. Use them as professional guides in your planning. Blueprints are available for all designs.

FARMINGTON LUMBER & COAL CO.
32800 Grand River Phone 0020

INTERNATIONAL HARVESTER
Kitchen Size Table Top
7 cu. ft. FREEZER
Holds 245 lbs.



Imagine the care-free luxury of freezing foods right in your own kitchen! Store everything you need for weeks of good eating... everything in just a 27 1/4 x 44 1/2 in. space! Think of saving valuable time as 50¢ per lb. of getting exciting 1 1/2 features: smooth table top for added working space, overall freezing so you can freeze foods on 5 surfaces, Deli-Wal cabinet that does away with excessive moisture! Preserve seasonal foods, pocket dollar savings... now!

Priced only **\$279.95**
11 and 16 Cu. Ft. Size

EVERETT IMPLEMENT CO.
"Your International Harvester Dealer"
31200 Grand River at Orchard Lake Road Phone 1515

FARM NEWS

Plan For Winter Egg Production

Egg production from pullets next winter depends a lot on the kind of care and management poultry raisers give their birds now, according to H. C. Zindel, Michigan State College extension poultry specialist.

He points out, for instance, that you don't need to wait until you house the birds to start culling the poor ones from the flock you plan to put in the laying houses. "That's raise your eggs-per-bird average and save the cost of feeding the stragglers in the meantime. "Pullets need a well-balanced feed to grow," he said, and warned, "Don't rely on the neighbor's good luck and his feed formula. It's better to buy a good quality prepared feed, or if home grown grains are available, it might be economical to have a mill in the vicinity add them to the supplement in correct amounts."

There's considerable discussion as to whether pullets need to be raised cut-of-downs. A good range may save up to 20 per cent on the feed bill but there are some additional costs too.

No chickens should have been raised on the range for the previous two years or more — that's a disease precaution. Good growing feeds are still a necessity on a range, and they must be given range, and they must be given water and feeding facilities. Good legume or grass range is best. Figure about 200 birds per acre, Zindel advised.

If diseases are prevalent in your area don't take chances, vaccinate. Don't allow poultry buyers in the coops, on the range, or even on the paths of travel between the coops. Clean up by spreading last year's accumulation of manure if you haven't already done so. And spray with recommended insecticides to control flies, the M.S.C. poultry specialist said.

Then, when the pullets are in 5 to 25 per cent production they should be housed, blood tested and culled by an expert.

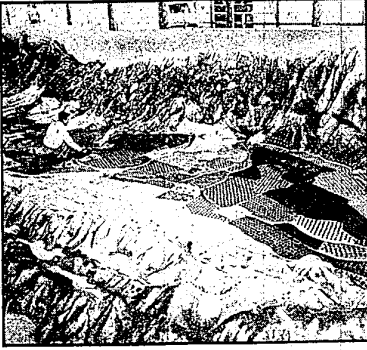
Danger in Farm Operation Increases With Beginning Of Harvest Season

Michigan farm people suffer more accidents during the harvest season than at any other time of year, that's why David O. Steinkopf, extension specialist in health and safety organizations at Michigan State College, urges farm workers to heed the advice, "Harvest time is be-careful time."

The harvest rush, long working hours, revolving gears, belts, shafts and cutters combine to increase the danger of farm accidents. And they increase the need for following these basic safety rules.

1. Keep all shields and safety guards in place.
2. Always stop all machinery before oiling, adjusting or unclogging it.
3. Do not wear loose or ragged clothing around machines.
4. Always operate tractors at a safe speed, and be extra careful with tractors on highways.
5. Keep small children far away from harvesting machinery.
6. Do not get off equipment while it is moving.
7. Look both ways when approaching a highway.

8. Obey highway rules and signs, and use proper headlights and tail lights at night.



WORLD'S LARGEST LITTLE VALLEY—The "giant" stooping at last to a woman of average height putting the finishing touches on the largest activated concept of a valley ever constructed, a 80 by 82-foot model of California's Central Valley Reclamation project. Push button-controlled water flows through 23 rivers and sloughs and the Millington countryside built at Tracy, Calif., boasts miniature trees, crops and herds of cattle and sheep.

Protect Forests From Damaging Fires

A few extra precautions against forest fires will assure you and your fellow travelers of being able to enjoy the state's scenery again, Michigan State College extension foresters remind vacationers and tourists.

Even light burning fires cause high mortality in the forest. Tests have shown that nearly all the small trees up to 7 feet tall are killed by them. And larger trees suffer bark injuries that expose them to wood-rotting fungi and insects.

Enterprise Classified Ads Bring

PASTURE CALVES DURING FALL FOR BETTER HERD

Dairymen can save time and raise more healthy calves by putting them on pasture during summer and early fall.

"The time-saving angle is especially important now when most dairymen are busy with crops. R. C. Lewis, of the Michigan State College dairy department, points out. "Green grass and sunshine are excellent sources of vitamins. Lewis says, even though the stomachs of small calves are not developed to the extent that they can handle large amounts of bulky feed. "The pasture should provide plenty of shade to give the calves a chance to avoid flies and excessive heat. If the pasture has no shade, a lane can be put up letting the calves go to the barn when they want to.

TOL-E-GRO
Organic Fertilizer
DOES NOT BURN
Spread in hot sun or cool evening, on wet ground or dry, Tol-E-Gro will not burn grass or other plant life.

Prepared by CITY OF TOLEDO
SUPERIOR, YET INEXPENSIVE

80 lbs. \$1.90
STEINKOPF NURSERY
Farmington and 8 Mile Roads

Tools & HARDWARE

You can do a better job with the right tools. And you can get what you are looking for at MASCOT'S.

- HAMMERS
- SCREW DRIVERS
- PAINT SCRAPERS
- PAINT BRUSHES
- SAWS

Saws Set and Filed

That goes for hardware, too. MASCOT has an outstanding selection of hardware items priced right for real economy.

MASCOT HARDWARE
Paints & Plumbing Supplies
33305 W. 7 Mile Road at Farmington Road
Phone Farmington 1781
8:30 to 6:30 DAILY
8:30 to 8:00 FRI. & SAT.

Quarantine Show Animals To Cut Spread Of Disease

The thrill of taking home a blue ribbon from the county fair might be short lived if every showman didn't cooperate in preventing the spread of disease.

Usually the best animals on the farm go to the county fair show ring. For this reason, Dr. Glen Reed, Michigan State College extension veterinarian, believes it's wise to take every precaution to protect them from disease.

State regulations requiring clean bills of health before animals can show protect your own stock and that of other showmen as well. Dr. Reed advises getting necessary papers from veterinarians so that it isn't done as a last minute rush job.

An extra precaution against the spread of disease is quarantining show animals when they are returned to the farm, he says, and may pay off in the long run. By isolating show animals from the rest of the herd or flock for 3 weeks, you're making doubly sure any infection picked up in the show ring doesn't spread to the rest of your animals.

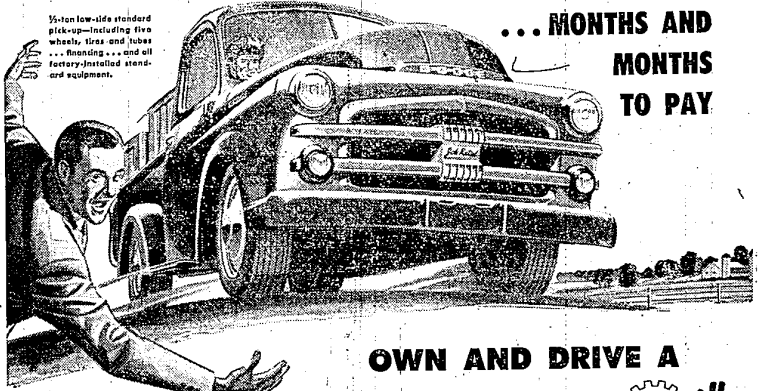
The Grist Mill
By ED ALCHIN
County Agricultural Agent

What is well under way to being harvested. One precaution: wheat will spoil if stored too wet. One simple way to determine the moisture content is the salt method. This is done as follows: put a handful of wheat in a paper bag or clean can, add one tablespoon of table salt and shake the two together for one minute. If the salt comes out as it was put in — dry and granular — the wheat is dry enough for harvest, about 14% moisture. However, if the salt comes matted together and in lumps (like it comes out of the salt shaker on a rainy day) your wheat is too wet. Even if the salt comes out dry and clean, it is a good idea to have the moisture checked by your elevator for more accurate moisture determination.

Protect your alfalfa pasture during the months of August and September, so that it will have a chance to restore its root system for growth next spring. The length of the alfalfa stand depends largely on how it is treated.

Strict sanitation is the first and one of the most important steps in an effective fly control program. Eliminate the breeding places.

AS LITTLE AS \$346.50 DOWN



... MONTHS AND MONTHS TO PAY

OWN AND DRIVE A DODGE "Job-Rated" 1/2-TON PICK-UP

No other pick-up gives you so many outstanding comfort features!

Wide 3-person "chair-height" seat...the biggest of any popular pick-up...wider than many passenger car seats.

Greatest windshield visibility area of any popular pick-up... plus sun visor and dual windshield wipers.

Revolutionary new "Offlow" shock absorbers — the same as on new Dodge passenger cars... for sensational new riding comfort!

Hurdy steering-column gearshift for extra convenience — just like you get on many passenger cars.

Easy to handle as a car... thanks to shorter turning diameters for extra-easy turning and parking.

No Credit Term Restrictions! Immediate Delivery!

Here's good news — big news! Now... for a limited time only... you can own and drive a new Dodge "Job-Rated" 1/2-ton pick-up for as little as \$346.50 down. And you pay the balance in low monthly payments!

You'll enjoy "passenger car" comfort, convenience, handling ease, and economy. And you'll have a brand-new, smart-looking Dodge pick-up with a big 37-h.p. high-compression engine that gives you "passenger car" cruising speeds with "passenger car" economy.

Chances are your present car or truck may more than equal the down payment. Come in for a demonstration... today... before this unusual offer expires.

You can also get this Dodge 1/2-ton pick-up for as little as \$8.18 a week

Available with famous **9100 FLUID DRIVE!**

The same proved fluid coupling between engine and clutch that has brought smoother starts, easier handling, less gearslipping to thousands and thousands of passenger car owners.

Don't delay! Act now! See us today!

Offer available for limited time only!

HOWARD OTIS - 33015 Grand River Ave.
Phone 0001 FARMINGTON, MICHIGAN Phone 0909