

**HOY'S
WELDING SERVICE**
20417 Middlebelt
GENERAL WELDING
ALSO
**PORTABLE
EQUIPMENT**
ALL WORK GUARANTEED
JIM HOY, Prop.
Farm. 0547

To Hold Vegetable Field Day Sept. 5

The annual Vegetable Field Day at Michigan State College will be held September 5. Dr. Wittwer and Mr. Patterson have treated potato and onion plots with Maleic hydrazide, an agricultural chemical which inhibits sprouting and prevents storage losses in many vegetable root crops.

Dr. Isabet has extensive variety trials on tomatoes, sweet corn, cabbage and other vegetables.



FARM NEWS



Fruit and Garden Notes

By Willard E. Bosserman

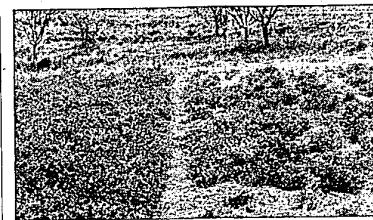
Some folks confuse blueberries with huckleberries and would like to know what the difference is. First, I might say that there is a bigger difference between blueberry varieties than there is between huckleberries and huckleberries. Blueberries have small, soft seeds which are quite insignificant, while the huckleberry has hard seeds that are noticeable, especially when you get them above your uppers.

Blueberry varieties range from the small wild berries found in marshes and swamps to the large berry grown on cultivated muck lands.

Anybody who might be considering growing their own blueberries should know that they require very exacting soil conditions. The soil should be very acid (PH 4.0-5.1), with water table 14 - 22 inches from the surface. Lots of organic matter is also required by the plants.

MSC poultry specialists say that a flock of pullets will lay 20 to 30 per cent more eggs than a flock of old hens. The pullets have less disease, too.

Better Yield, Higher Agriculture Profits From New Farm Legumes



Wilt Resistant Alfalfa (left); Susceptible Grimm (right)

A slight increase in yield of forage, grain or seed per acre, in percentage of leaves to stems which means more protein, minerals and vitamins, in the productive life of plants, winter survival, disease and insect resistance, or any one of a number of other desirable traits will more than pay for the extra cost of improved seed. Advantages of improved seed are evident, but since the farmer who sows improved seed is likely to use more fertilizer, better preparation of seed bed and cultural practices, the gain derived solely from improved seed may not always be easily distinguished from other improvements. Three of the newly introduced biennial varieties of sweet clover — Spanish, Madrid and Evergreen — which are superior for pasture use, have also given outstanding larger hay yields in the Central States than the older common yellow and Grundy County white.

Late Blight May Strike Potatoes, Tomatoes

Warm days, cool nights, plenty of moisture and heavy dew are ideal for the development of late blight on tomatoes and potatoes.

For market tomatoes and those to be handled in the fresh fruit trade Dithane used according to manufacturers' recommendations at five-day intervals is recommended. Those tomatoes being grown for processing should receive either of the following:

Fixed copper recommendations are to apply 4 pounds of 45% copper, plus one ounce of spreader sticker to 100 gallons of water.

Bordeaux recommendation is to use granulated copper sulfate at the rate of 8 pounds of copper sulfate to 8 pounds fresh spray lime in 100 gallons of water.

Effort should be made to keep the foliage covered. It is preferable to use the fixed copper solution in preference to bordeaux on plants which are not completely mature, then switch to bordeaux.

Refrigeration Service

PLYMOUTH 470
KENWOOD 2-9000

REID
Electronic Service

Saturday Nights

**CECIL BROWN
and the
NEWS**

C K L W — 7:50 p.m.

Brought To You by
STATE FARM MUTUAL
AUTOMOBILE INSURANCE
COMPANY

Local Agency
33636 Grand River
Farmington

Phone 0757

MAURICE J. BROWN



**Asthma
Hay Fever...**

Why suffer when something will help you? After your symptoms have been diagnosed as Asthma or Hay Fever you owe it to yourself to investigate.

ASTHMA EXERIN

If you are a user of Asthma Exerine, please bring in your inhalizer for free inspection and servicing.

**BRADLEY
Rexall
DRUGS**
REXALL FOR RELIABILITY

Farmington, Michigan

Home Made Gadget Aids In Cutting Sweet Corn Off Cob For Canning

A helpful suggestion for home makers who have exhausted their patience and endurance in cutting sweet corn off the cob for canning or freezing came this week from Mrs. Josephine Sawyer, home demonstration agent of Oakland County.

Lots of the up-coming crop of sweet corn will be headed for the jar or freezer and the strain of one phase of the job can be eased with a small piece of homemade equipment.

A spike, a medium-sized cutting board similar to a bread board and something to drill a hole in and all you need. Drill a small hole on a slant through the board and put the spike through it at about a 45 degree angle. Take care not to split the wood.

The spike should extend through the wood about 2 inches. That's all there is to it.

To operate this handy gadget, push one ear of corn at a time down the spike. The spike keeps the ear from sliding all over the board and holds it at a convenient angle for cutting. As a result, the job of cutting off the kernels goes faster and takes less time and effort.

Mrs. Sawyer suggests that it is best to drive the spike through the board at one end instead of in the center. This leaves more space for the cut corn to collect.

An oil company is experimenting with a paint which changes color with temperature variations. Applied to boilers and heating equipment, the paint provides at a glance an indication of the inside temperature. On an engine the paint will tell the temperature of the various parts.

The trench silo may be entirely below ground, partly below, or entirely above ground. Walls should be sloped in at the bottom to keep the ensilage from settling away. This would allow air to enter, causing spoilage. Too much slope hinders settling. Bell says a foot slope between top and bottom widths is about right.

Properly covering the trench silo to prevent spoilage is important. One of the best ways to do this is to put on a good grade of building paper or asphalted paper. Then add 6 to 8 inches of sawdust, chopped hay or straw over the top.

FLOWERS For Every Occasion

- POTTED PLANTS
- CORSAGES
- WEDDING FLOWERS
- FUNERAL DESIGNS

Let Keller's Serve You
Today!

**KELLER'S
Greenhouse**
28822 8 Mile-Phone 1597

DELIGHT

• • • Feeds

are economical to use because they are made right here in our modern mill. Save on heavy freight charges — save valuable time and get top quality feed always.

DELIGHT FEEDS

... are made fresh every day from the best grade of grains. You can depend on bigger profits from your stock when you use DELIGHT FEEDS regularly. Try 'em today — you'll be a regular DELIGHT customer tomorrow!

MILLERS OF FLOUR AND FEED FOR OVER 50 YEARS
FARMINGTON MILLS
ESTABLISHED 1895
33408 STATE ST. FARMINGTON, MICH. PHONE 0026

TOL-E-GRO Organic Fertilizer

Prepared by
CITY OF TOLEDO
SUPERIOR, YET
INEXPENSIVE

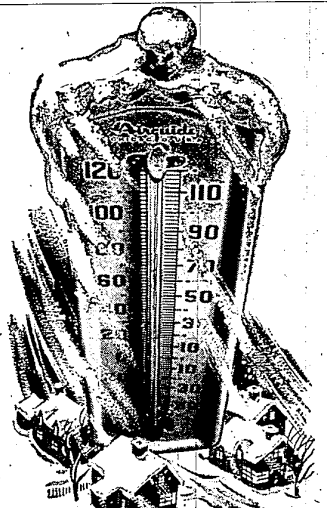
DOES NOT BURN

Spread in hot sun or cool evening, on wet ground or dry. Tol-E-Gro will not burn grass or other plant life.

- Rich in mineral and organic materials
- Promotes continuous plant growth
- Increases length and depth of roots
- Harmless to humans

80 lbs. \$1.90

STEINKOPF NURSERY
Farmington and 8 Mile Roads



BOTTOM of the THERMOMETER ... it may look far off now — but it's a lot closer than you think! Be wise.

FILL THAT COAL BIN NOW
and protect your family from sudden weather changes. Call us!

**FARMINGTON
LUMBER & COAL CO.**

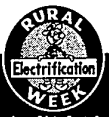
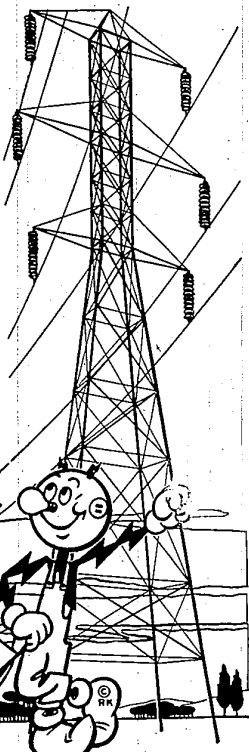
32800 Grand River Phone 0020

A Good Job Well Done

After half a century of work and planning, every farm in the area served by Edison has dependable, low-cost electric service available.

In addition, Edison is always seeking new ways of serving its farm customers: through research and engineering, teamwork with Michigan State College, County Agricultural Agents, community development groups and farm youth organizations.

Throughout the state and nation, investor-owned companies like Edison are providing farm families with the same type of dependable electric service to help them maintain their splendid food production record. There is no need for the federal government to spend your tax money to build more government-owned power projects or to enlarge present ones. It's a good job—well done.



the DETROIT EDISON CO.

Look who's getting a Free TRUCK SAVER inspection!



**Every International Truck owner gets our
99-point truck checkup without obligation!**

Come in and take this first big step toward getting your International Trucks ready for the long haul.

You'll save money, you'll save time, and you'll save trouble... if you take advantage now of our Truck Saver Inspection. It doesn't cost you one red cent, but it can be worth real money to you in the months ahead.

Our free Truck Saver Inspection starts the ball rolling in our complete Truck Saver Plan to keep your Internationals rolling at peak efficiency. The quicker you

get your free inspection, the quicker you'll know why it pays to put the complete International Truck Saver Plan to work for you now.

Come in, get your free
Truck Saver Inspection now

Call or come in—make an appointment for the 99-point checkup that can save you so much. Find out how our complete Truck Saver Plan can help you get peak performance from your Internationals right through any emergency. Don't risk delay, call us today.

CURT HALL

33224 Grand River

Phone 2680

Farmington, Mich.

INTERNATIONAL TRUCKS