

SUMMER FURNITURE
NOW ON DISPLAY AT
SCHRADER'S HOME FURNISHINGS
NORTHVILLE PLYMOUTH
111 N. Center • 825 Farmington
248-1828 • 453-9220

HAPPY HONEYMOON CARS
for young budgets are advertised in today's Classified Ads.

SAVE 151

FOX PHOTO
8x10 COLOR ENLARGEMENT
\$1.99
\$3.50 \$5.50

CAULEY HEATING & AIR CONDITIONING
Central & Industrial Refrigeration
WIXOM, MICHIGAN
349-7460
FREE ESTIMATES
EASY BUDGET TERMS

FOX PHOTO
882 W. ANN ARBOR TRAIL
DOWNTOWN PLYMOUTH
PHONE 453-5410

HENRY FORD COMMUNITY COLLEGE - PRESENTS

TENNESSEE WILLIAMS' Pulitzer Prize PLAY

Cat on a Hot Tin Roof

MAY 12-13-14: 18-19-20-21
WEEKDAYS AT 8:30, SUNDAYS AT 7:30
At Theatre Guild of Livonia-Redford
15138 BECH-DAILY (at 5 Mile)
TICKETS \$2.50 at door / \$1.00 if ordered in advance
SEND CHECK OR MONEY ORDER TO "DRAMA"
5101 EVERGREEN AVE.
DEARBORN, 48128

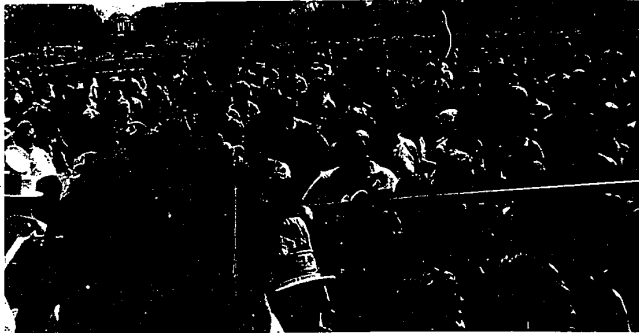
Being a funeral director isn't for everyone. The hours are unpredictable . . . you are continuously exposed to grief . . . you become the subject of a lot of bad jokes . . . and, when you have a sick friend, you can't visit him because people will say you're a "vulture" and you can't stay away because his feelings will be hurt.

But we're not complaining. We know there are disadvantages to every job, and ours has an unusual redeeming feature: it provides the satisfaction of knowing we've helped others at a time when help is needed most.

How would you like to put YOURSELF in OUR SHOES?



HARRY J. WILL
Funeral Home
25450 PLYMOUTH ROAD
4412 LIVERNOIS AVENUE
535-3722



ANTI-BUSING RALLY -- About 100 Observerland residents were among the 1,200 persons who attended the anti-busing rally in Washington, D.C. Saturday. Chartered buses left from Redford Township and Livonia and delegations from Garden City, Westland and Southfield also attended. The rally climaxed Irene McCabe's march to the Capitol where she had estimated 25,000 persons would greet her. (Observer photo by W. Edward Wendover)

NAG Riders Uncomfortable

EDITOR'S NOTE: This past weekend, the Observer's W. Edward Wendover accompanied the Redford National Action Group (NAG) members who journeyed by bus to Washington, D.C. for an anti-busing rally climaxed Irene McCabe's march to publicize anti-busing sentiment. Residents from several Observerland communities were among the 1,200 persons at the rally held at the base of the Washington Monument Saturday afternoon.

By W. EDWARD WENDOVER
WASHINGTON
"It is sad that so few came to fight for so many."
That was the reaction of most of the persons who journeyed to the nation's capital when they assembled at an anti-busing rally there Saturday. Leaders of the Washington rally were predicting crowds of 25,000, but most press estimates put the actual figure at about 1,200.

The busing protestors rode buses themselves, drove campers and some flew to make the rally and march around the White House, Saturday.

THREE DAYS earlier, Mrs. McCabe had completed her march to Washington, but the Saturday rally was held by the march leaders to be the climax of the event. Chartered buses left from Redford Township's Claude Allison Park and from War Memorial Church in Livonia.

It was when the rally started that the anti-busing supporters began to hope for the turnout they'd expected. The rally began with country-western music and included speeches by the "walking mothers" who marched with Mrs. McCabe; L. Brooks Patterson, NAG attorney; and Mrs. McCabe herself.

Mrs. McCabe blamed the poor turnout on the inability of working people to get away for the Washington trip. Penny Estes, president of the Redford NAG chapter, said "There weren't enough people here. I'd hoped there'd have been more."

"I praise everyone who did come," she said.

ORGANIZERS of the rally estimated their crowd at about 3,000 persons. The official Washington police report said 800 although many persons left the rally before the march around the White House.

Some of the anti-busing supporters complained that the rally was too political. Messages from many public officials were read, and appearances were made by some local community officials.

No Observerland public office holders spoke and some people at the rally criticized the absence of U.S. Rep. Jack Macdonald (R-Farmington). But according to the rally's organizers, the goal of the march and the rally was to foster anti-busing legislation from Congress.

"I hope this showed Congress that some people care (about busing)," Mrs. Estes said.

BERNARD W. FARMER
of 25517 Lynford, Farmington, has been promoted to manager of on-line financial market development of Burroughs Corp.'s Business Machines Group. Farmer joined Burroughs in 1956 at Omaha and most recently was manager of Federal Home Loan Bank activity. He will be responsible for market development.

SPRING CLOSEOUT!
ON 1971 10 hp FORD TRACTOR MOWERS YOU CAN GET A 10 hp 1971 MODEL WITH 36" ROTARY FOR ONLY **995⁰⁰**

Ford Tractors Equipment

BROQUET FORD
TRACTOR & EQUIPMENT
34600 W. 8 MILE FARMINGTON
478-3500
Tues & Thurs 9 a.m. - 9 p.m.
Mon, Wed, Fri 8 a.m. - 5:30 p.m.
Sat 9 a.m. - 4 p.m.



HIGHLAND TREE FARM SALE
YOU DIG -- YOU SAVE!
TREES FROM **\$4 to \$12** (4 to 16 ft.)

LARGEST STOCK OF WHITE BIRCH in Southeastern Mich. also MAPLE and OAK

STATE INSPECTED-GUARANTEED

HIGHLAND TREE FARM
Harvey Lake Road and Milford Road
OPEN 10-7 Daily
DIGGING & DELIVERY EXTRA

Fix Up Time!

TRU-TEST LATEX HOUSE PAINT

TRU-TEST 697 GAL. INTERIOR LATEX PAINT **5.97 GAL.**

TRU-TEST 699 GAL. MARVELUSTRE LATEX SEMI-GLOSS ENAMEL

Protects, wears like oil-base; tools clean up in soapy water! In white and Jamestown colors. Custom colors priced higher.

Marvelustre -- our finest acrylic latex semi-gloss enamel! It's hard, satin sheen resists soiling, fumes, steam and moisture. Extra scrubable. Ideal for kitchen, bath-walls, cabinets, all woodwork. It's latex -- so easy to use. 48 Colors to match Sat-N-Hue.

LIVONIA True Value HARDWARE
5 MILE ROAD at FARMINGTON ROAD
PHONE 937-1611 GA 2-1155
OPEN DAILY 9 a.m. - 9 p.m. SUNDAY 10-2 p.m.

free!

C-60 Memorex Cassette When you buy 1 at \$2.75

MEMOREX 60

Solid State AM POCKET RADIO \$2.79

9 Volt Battery • Magnetic Earphone • Hand Strap • Warranty Card

L.A. SOUND STUDIOS inc.
LIVONIA - 30795 W. 8 MILE 477-4246

CHARMGLow GAS GRILL SALE

A Charmglow gas grill lets you enjoy all the fun of cookouts without the mess and fuss of an old-fashioned charcoal fire. You'll still get that same barbecue flavor because barbecue flavor is a result of the smoke of meat juices dripping on hot briquets. With Charmglow's long life "Charm-Roks" you enjoy barbecuing perfection plus the speed and dependability of modern gas!

Open Friday Evenings 'til 9:00

Consumers Power

Model HEI-1

Credit Term Applications Available

11801 Farmington Road, Livonia