



Red hot salvia: If you're looking for something really showy, grow one of our annuals—the salvia.

They are called the "poor man's geranium." Actually, they are just as showy and a lot cheaper. Some people even use them in porch and window boxes in place of geraniums. One reason why so many gardeners do not grow salvia is too late to have value. The old varieties used to be late blooming, but today we have varieties that start blooming in July, so there's really no reason for growing the late types.

In selecting salvia, remember this rule: Tall salvia bloom later than the dwarf varieties. Red Pillar is

one of the best dwarf salvia we've ever grown. It grows 15 inches high and has densely packed spikes of dazzling scarlet on dwarf bushy plants. St. John's fire is another early and dwarf salvia, growing a foot high. It starts to bloom about Aug. 1 and like all salvia, will continue right on until frost.

A brand new variety called Hot Plants is an early bloomer, starting around late July or early August. Unlike the other early salvia, it is said not to be "seedy" as the season advances, but keeps on blooming in the greatest profusion.

Ever grow the blue salvia much different from the red salvia? It has long graceful

spikes of light grey-blue, ideal for cut flowers, or for drying.

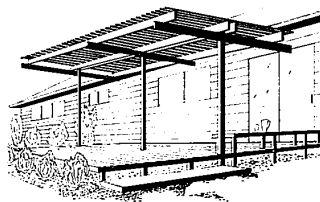
While the blue salvia is one of the best for winter arrangements, you might want to grow cockscomb, perennial gypsophila, honesty, strawflower, and statice.

**TALL TOMATOES:** If your tomato plants are tall and spindly and you're hesitating to set them in the garden, my advice is: Plant them! We've seen old-timers plant tall, leggy tomatoes with a crowbar!

They punch deep holes in the soil, set the plant in, so that the top sticks out. Roots will form up and down the stem. After the plants are set in the garden, place your grass clippings around each to save moisture and cut down on weeds.

Tomato plants like a uniform supply of water at all times. Dry soil stunts growth and causes the bottom of fruits to develop a brownish-black spot called blossom end rot.

**FREE:** Want to know more about growing vegetables? Send me a self addressed, stamped envelope for our guide, "Tips on Growing Vegetables."



**DECK WITH FREESTANDING** sun screen offers daytime play area, evening entertainment annex. Open screen of 1x3-inch western cedar avoids wind-lift problem, rests on 2x6-inch beams, 4x4-inch posts set in concrete. Deck of 2x2-inch Douglas fir laid flat hides concrete slab. Bench provides safety railing by door.

## Grubworms May Be At Work In Lawn

If circular or irregular dead spots ranging from one to two feet in diameter appear on your lawn this spring, chances are you have grubworms, say turfgrass specialists at Michigan State University.

Grubs are the larvae of hard-shelled beetles that feed on the roots of turfgrasses. They spend the winter some six to 10 inches deep in the soil. In March they begin working their way up to the root zone and usually begin active feeding by late April.

If you have grubs in your lawn, begin treatment as soon as the ground has thawed.

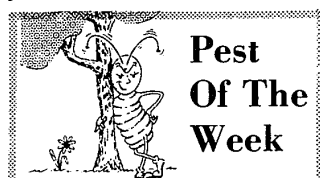
Mole activity is one indication that grubs are present. If you get rid of the grubs, the food source of the

moles, you will also discourage mole activity.

One sure way to determine if you have grubs is to cut a flap of grass a foot square on three sides and roll it back. Do this in several places over the lawn during the active feeding season.

When the grass flap is rolled back, grubs may be seen lying in a C-shaped position on the soil. They are off-white in color, have a brown head and measure about an inch long.

If you find an average of four to five grubs per square foot, treat your lawn. Use a granular formulation of chlordane, applied uniformly, at the recommended rates indicated on the label.



Leaf miners mine out the centers of leaves leaving only the outer surface of the leaf, which is almost transparent. Whole leaves or major portions of the leaves may be destroyed.

Adults lay eggs in the leaves in early May, but activity has been delayed due to the cool weather. It should begin as the weather warms.

Trees commonly affected are elms, oak, maple, etc. Birch and hawthorne are especially susceptible. Last year a heavy infestation occurred on oaks.

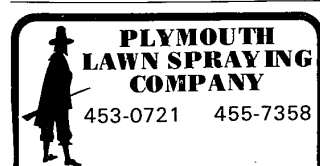
**CONTROL:** Systemics appear to be effective on this insect. Applications should be made now. Use two per cent Di-Syston granules applied to the soil in the root area. Sprays may be applied later when mines first appear on the leaf and before they reach 3/4 inch in diameter.

Watch for black pimples on the leaf surface, which are indications that eggs have been laid. Apply three sprays seven to 10 days apart, of 57 per cent Malathion emulsion at rate of two teaspoons per gallon. A second but less damaging brood of this insect appears in July.

## Gazebo Plan Available

Summer entertaining is a breeze with a gazebo incorporating built-in barbecue and storage area, wood benches are built of Douglas fir or western red cedar.

Plans for the gazebo and counters, benches and four other outdoor projects are available for 15 cents in coin from Western Wood Products Assn., Dept. 539-P, 12 feet square, has roof Yeon Bldg., Portland, Or. overhangs extending covered 97264.



**WEEDS**  
Rid your lawn of unsightly weeds with just two applications per year. Complete weed control with liquid fertilizer in May and September.

**ONLY \$11.00 per spray**, for average lot 60x120, up to 5,000 sq. ft. of lawn area.

**20 YEARS OF EXPERIENCE**  
SATISFACTION GUARANTEED  
FREE ESTIMATE AND ANALYSIS

THANK YOU  
Bob & Doug Olds

## Canopy Filters Sun, Adds Living Area

An airy, sun-filtering canopy covering a new deck enhances an unused side or back yard, converting it to a comfortable outdoor living and playing area.

A great many post-war houses that were plunked down on their lots need help to relieve the starkness of the surrounding yard.

Many have sliding glass doors opening onto too-small concrete slabs, the only contribution to outdoor living. Addition of decking, sun shade, benches and screens blends the house more

closely with softer lines of the surrounding garden.

The deck can be placed over the concrete slab, preferably at floor level to avoid a step at the house entrance.

A SUN SCREEN of 1x2-inch western cedar latticework on 4x4-inch posts and 2x6-inch beams offers a shady area for children to play on sunny days, and for late afternoon meals or entertaining.

The canopy can be freestanding for a more open effect, with its posts solidly set in concrete, but in areas with

frequent strong winds it may be desirable to attach the beams to the house.

Variations include use of translucent plastic sheers over the post-and-beam framing to provide shelter from rain showers, or a fence screen of 1x4-inch boards at one or two sides of the deck to blunt breezes and afternoon sun.

Design interest can be added to the deck by departing from a simple rectangular form, jogging around existing plantings or enclosing new planter areas.

**ROOFING & SIDING**  
**B & M BUILDING CO.**  
RESIDENTIAL SPECIALIST  
OVER 10 YEARS EXPERIENCE  
WE WORK YEAR ROUND

We deal directly with the owner and avoid the middle man.

ROOFING  
SIDING  
REPAIR

ASPHALT SHINGLE • 240 SALL  
DOWN • MOST CHOICE OF CO.  
DUE TO CHOICE FROM NEW  
REPAIRS AND REPAIRS

LET US EVALUATE YOUR  
ROOFING NEEDS  
NEAR EFFICIENT WORK-  
MANSHIP  
LICENSED, INSURED

EASTSIDE  
891-6288  
20001 JOHN R. DETROIT

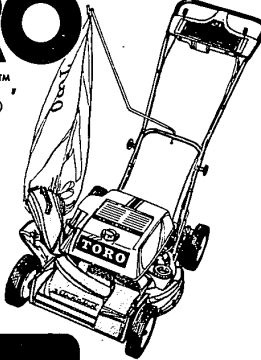
WESTSIDE  
531-4729

# NO.1 TORO

**21 Inch Guardian™**,  
with Key-Lectric®  
start and front  
Pow-R-Drive™

The ultimate mower, with all the features that have made Toro a leader for years. Starts with a key, and pulls itself through the job. Safety features that make it almost people proof. A convenience package that takes care of the details. You can't buy a better mower, anywhere, at any price.

\*Exclusive trade name of The Toro Company



## Dealers

- SOUTHFIELD AREA**  
Lion's Mower  
28879 Greenfield  
near 12 Mile Road  
557-3850
- GARDEN CITY AREA**  
Town & Country  
V&S Hardware & Fireplace  
27740 Ford Road near Inkster  
422-2750
- WESTLAND AREA**  
Wayne Lawn & Garden Center  
2103 Wayne Road  
1 Mile N. of Michigan  
721-5220
- REDFORD AREA**  
Bill's Mower Shop  
25846 W. Seven Mile  
at Beach Daly  
KE 1-7887
- Georges Air Cooled Engine Service  
26118 Plymouth Road  
near Beech Daly  
538-3290
- LIVONIA AREA**  
H & R Hardware  
27430 Joy Road near Inkster  
GA 1-5161
- Livonia V&S Hardware & Home Center  
33533 W. Five Mile Road  
near Farmington Road  
427-1165
- Loeffler Pro Hardware  
29150 W. Five Mile Road  
near Middlebelt  
GA 2-2210
- PLYMOUTH AREA**  
Saxtons Garden Center  
587 W. Ann Arbor Trail  
near Main Street  
GL 3-6250
- WAYNE AREA**  
Northside Hardware  
2122 Wayne Road  
1/2 Mile N. of Michigan  
PA 1-7244
- DETROIT AREA**  
F. D. & Sons  
T.V. Hardware & Fence Co.  
24313 Grand River near Telegraph  
KE 2-6181
- LARRY'S T.V. Hardware**  
25880 Five Mile Road  
at Beech Daly  
KE 2-1340
- FARMINGTON AREA**  
Lloyd's Patio Furniture  
& V & S Hardware  
24225 Orchard Lake at 10 Mile Road  
477-3676
- May's Mower & Engine Service  
29480 W. Ten Mile Road  
near Orchard Lake  
474-4462
- Ridings Lawnmower Service  
20781 Farmington Road  
N. of 8 Mile Road  
GR 4-6743

**GENUINE Armstrong TEMLOCK**  
**WASHABLE SUSPENDED CEILING**

**Sale!**

Complete! INCLUDES  
HEAVY DUTY GRID SYSTEM

GET ALL THIS at our low price washable white ceiling panels, grid system main runners and tees, suspension hooks and hanger wire. Acoustical and patterned panels also available.

12"x12" WHITE  
CEILING TILES  
9¢ ea. 12¢

When the grass flap is rolled back, grubs may be seen lying in a C-shaped position on the soil. They are off-white in color, have a brown head and measure about an inch long.

If you find an average of four to five grubs per square foot, treat your lawn. Use a granular formulation of chlordane, applied uniformly, at the recommended rates indicated on the label.

**18¢** sq. ft.

**PANELING**  
Pre-Finished Luan Paneling  
1"x4" GROOVED PANELS  
4"x7" 2.95  
4"x7" 2.49  
WE SPECIALIZE IN FAST PRICED  
PANELING  
SEE US FOR  
SELECTION

**GUTTERS**  
5" K WHITE ALUMINUM  
10 FT. LENGTHS  
NOW  
A  
LOW  
\$2.19  
FITTINGS  
AVAILABLE

**FOR KITCHEN OR BATH**  
NEW 4"x8"  
**MELAMINE**  
Tile-Finish HARDBOARD Panels  
\$7.89 each  
Durable, grease and  
stain resistant. Mirror  
finish back. Easy to  
install. Good selection  
available.

**MOLDED 1-PIECE TOP & SINK**  
**VANITY**  
2 Doors. Compare at \$59.95  
\$39.95  
Full 24" x 24" top. 24" x 24" sink. 24" x 24" vanity. 24" x 24" mirror. 24" x 24" cabinet. 24" x 24" sink. 24" x 24" vanity. 24" x 24" mirror. 24" x 24" cabinet.

**ALLEN**  
LUMBER CO.  
21645 GRAND RIVER—between Micholich & Lahar  
KE 2-0605  
INKSTER—27540 Michigan LD 3-1600 Open Sun. 10-5

MEMORIAL DAY WEEKEND is here and it's time for planting around the home and around the grave site of your loved ones. We have a wide selection of annuals, perennials, and low growing evergreens to meet your needs.

**WAYNE JONES**

**ROSES**  
Choose from your favorites!

**MANY VARIETIES**  
\$2.50  
PATENTED VARIETIES  
SLIGHTLY HIGHER

**PERENNIALS**

- Delphiniums
- Lupine
- Coreopsis
- Foxglove
- Viola
- Artemesia
- Carnation
- Canterbury Bells
- Gaillardia

**ANNUALS**

- Petunias
- Alyssum
- Snapdragons
- Zinnias
- Marigolds
- Ageratum
- Salvia

TRAY 35¢  
FLAT \$3.75

**GERANIUMS**  
IN BLOOM  
RED AND PINK  
4 for \$1.20

**BLACK HILLS SPRUCE**  
5 Ft. \$20.00  
8.8B  
Slow growing compact evergreen tree with bright foliage, bluish-green color.

**Plymouth Nursery**  
38903 ANN ARBOR ROAD, LIVONIA  
(West of Ann Arbor Trail)  
"THE NURSERY SUPERMARKET"  
With the Personal Touch  
Call 464-1500  
HOURS: Daily 9 a.m. - 6 p.m.  
Sunday 10 a.m. - 6 p.m.

Don't wait to do your landscaping because you don't know how! We will draw a plan for your home, and give you our expert advice on what to plant and how to plant it. We draw free plans to scale for our customers. Just bring in your house and lot dimensions and a picture, if possible. Your title survey usually has all this information on it. We can do the planning for you, for an additional labor charge.