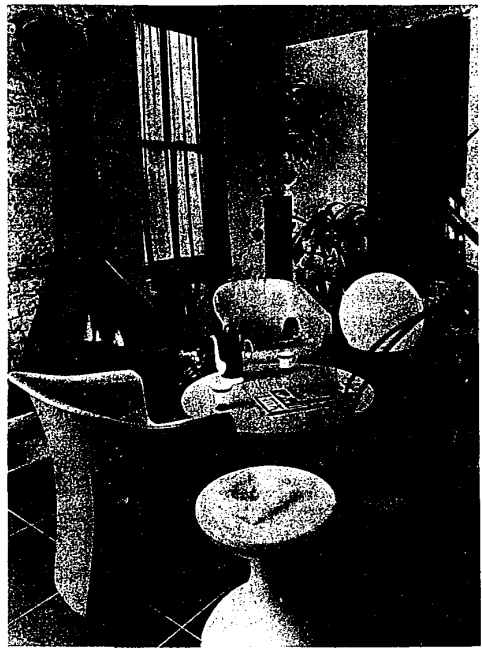


WE NEED WORK...
LOWEST PRICES ON
QUALITY CONSTRUCTION
CALL KE 8-2850
• Garages • Cement Work
• Fences • Room Additions
LICENSED, BONDED
INSURED
Cole Building-SINCE 1939
26555 GRAND RIVER Visit Our Models - Open 9-5

Suburban Gardener
The Clematis Vine:
'A Real Show Stopper'
By BETTY FRANKEL
Special Writer
Vines add a third dimension
to the garden. Almost any vine



HARDLY TRADITIONAL, yet ideally suited to first apartment living needs, these innovative designs have a high degree of flexibility for the future. Molded of rigid urethane foam and finished in a choice of 10 House & Garden colors, they're designed for indoor and outdoor use. This fireside grouping includes a pair of Owosso lounge chairs, a Turbine coffee table with textured fiberglass top, an hour glass stool used as a chairside table, and a bubble lamp. Manufacturer is Vaungarde, Inc., Owosso.

Complete Home Cooling at a LOW PRICE!

• QUIET!
• RELIABLE!
• ECONOMICAL!
GE HEAVY-DUTY HIGH SPEED COMPRESSOR with welded steel shell for leak-proof operation.
SPINE FIN COIL... up to 50% more efficient than conventional coils.
QUICK-ATTACH refrigerant lines make hook-up quick and simple.
TOUGH ENAMEL FINISH... resists weather and corrosion.
TOP DISCHARGE DESIGN... offers quiet discharge of air upward, safeguards shrubs and flowers.

WHOLE HOUSE CENTRAL AIR CONDITIONER
Call us for a free survey and estimate. No obligation.
SLASOR Heating & Cooling
NOW IN LIVONIA - 2225 WEST 8 MILE, LIVONIA
Call - 477-4193

will add charm and interest to the planting around your home, but for a real show stopper try clematis.
One gardener in the area has trained a purple Jackman clematis on a trellis near his front door and in a festoon across the front porch. When it is in full bloom, people in passing cars often stop to get a better look.
In addition to the Jackman, which is perhaps the most popular and best known clematis, there are numerous other varieties now gracing area gardens. Clematis montana is covered with pink and white flowers in May. Clematis paniculata has dense green foliage and a profusion of delightfully fragrant small flowers in September.
Clematic coccinea bears small coral-red flowers from June until frost.
THE LARGE flowered clematis is among the most impressive garden plants. Its richly colored blossoms are produced high above the other plantings and can be seen and enjoyed from a distance. The Jackman variety is in bloom now. It bears four inch purple-blue flowers during the entire month of July. Other varieties may be selected that are pale blue, deep blue, pure white, lilac, or maroon, and that bloom early in the summer, mid - summer, or late summer.
Popular varieties among the large - flowered clematis include Nelly Moser, pale mauve; Ramona, lavender - blue; Mme. Edouard Andre, purple-red; and Henry, white.
Clematis require a rich, well - drained soil and lots of sunshine. They prefer an alkaline soil, so an occasional application of lime is beneficial. They need a support or wire to grow on. Leaf stems curl about the wire, fastening the plant.
When planting the vine, the soil should be deeply worked. It is good to add sharp sand and well - rotted manure. The whole plant is deeply set, with the crown three inches below the surface of the ground.
It is beneficial to mulch the ground around the roots. Although clematis prefers to have sunshine on the top, the roots should be shaded and cool.
The growth produced the first year after planting may need to be protected during the winter with straw or burlap, but after that the vines are perfectly hardy and need no protection. Within a few years they will grow 10 to 20 feet high, depending on the variety.
However, if it is necessary to restrict the size, they can be pruned. Some growers prune back the vines to within a few feet of the ground every year so blooms will be produced at a lower level. If space is unlimited they can be left to stretch up and out with only an occasional light pruning.

PINE LUMBER CASHWAY
EARLY Summer Savings
FULL LINE LUMBER DEALER
Qualified Lumber Salesmen to Serve You

SPECIAL from Black & Decker
1999
2x4x7 45¢ C&C
Economy Kiln-Dried White Woods

VINYL PANELING ON MAHOGANY
• DELACROIX WALNUT
• CALDWAY
• PECAN
• WINTER
• ELM
• GRAY
• WORMY
• CHESTNUT
VANITIES
Add a luxurious look to your bathroom, and plenty of extra storage space.
4x7 Now \$4.29
4x8 Now \$4.89
Reg. 49.95 \$44.44 C&C

REDI-WEAVE
INSTANT REDWOOD FENCING
Water Repellent Treated Horizontal Panels
5'x8' SECTION \$13.85
6'x8' SECTION \$14.85
INSTANT REDWOOD PATIO WITH REDDI-DECK
3'x3' SECTION \$7.40
4'x4' SECTION \$11.80
FROM GEORGIA-PACIFIC
Cash & Carry

CALIFORNIA REDWOOD BOARDS & DIMENSION
CLEAR 6' 8' 10' 12' 14' 16' 18' 20'
1x4 .90 1.34 1.64 2.00 2.35 2.68 3.05 3.35
1x6 1.82 2.16 2.70 3.24 3.78 4.32 4.86 5.40
1x8 2.18 2.88 3.60 4.32 5.04 5.76 6.48 7.20
1x10 2.70 3.60 4.50 5.40 6.30 7.20 8.10 9.00
1x12 3.36 4.48 5.60 6.72 7.84 8.96 10.08 11.20
2x4 2.46 3.28 4.10 4.92 5.74 6.56 7.38 8.20
2x6 3.60 4.80 6.00 7.20 8.40 9.60 10.80 12.00

"REDWOOD"
CONSTRUCTION HEART FOR PATIO OR FENCE
1x4 .66 .88 1.10 1.32 1.54 1.76 1.98 2.20
1x6 .96 1.28 1.60 1.92 2.24 2.56 2.88 3.20
2x4 1.26 1.68 2.10 2.52 2.94 3.36 3.78 4.20
2x6 1.86 2.48 3.10 3.72 4.34 4.96 5.58 6.20
2x8 2.46 3.28 4.10 4.92 5.74 6.56 7.38 8.20
4x4 2.64 3.52 4.40 5.28 6.16 7.04 7.92 8.80

SAVE ON GUTTERS & ACCESSORIES
10 FT. 5" K Aluminum Gutter \$2.69
DOWNSPOUT 2.19
MITRES 1.19
JOINT CONNECTOR .39
END CAPS .19
END PIECE w/TUBE .89
ELBOWS .49
K-OUTLET TUBE .29
FASCIA HANGER .39
STRAP HANGER .09
ALUM SPIKES .09
FERRULES .03
PIPE BANDS .19

CALIFORNIA REDWOOD
4"x6" 50¢ Lin. Ft.
Ideal for Patio or Gardens
Cash & Carry

DRY-WALL
4x8x3/8 4x8x1/2 \$1.69 \$1.95 C&C

BAKED ENAMEL ALUMINUM SIDING
5 DAYS ONLY
100 sq. ft. \$24.95
100 sq. ft. \$28.95
without Backer insulated Backer
• NEVER RUSTS
• NO MORE PAINTING
• EASILY APPLIED

New! Decorative FIBERGLASS PANELS
THE PERFECT ANSWER FOR PRIVACY SCREEN OR FENCE
26 x 96 \$2.49
26 x 120 \$3.49
26 x 144 \$3.99
ALL ACCESSORIES TO INSTALL IT YOURSELF

CEILING BEAMS
Has the appearance of real, rough-hewn wood. Installation very easy.
SALE! 99¢
Reg. 1.19
Cash & Carry
12 Ft. & 16 Ft. Only

ABITIBI PANELING
• High dent and stain resistant.
• Completely washable Non-Glare Finish.
• Flame resistant, Class II Rating.
• Reduces sound transmission.
• Meets FHA Requirements.
• 1/4" thick, 4" wide.
4x7 4x8 \$4.79 \$6.29
• HARVEST HICKORY
• ROSEWOOD
• BARNBOARD
• SALEM CHERRY
• VERMONT MAPLE
• AVOCADO PECAN
• PREMIUM WALNUT
• DRIFTWOOD BLUE
• ADRIENNE OAK
• SILVER ASH
• ORCHARD CHERRY (C&C)

COVER... WITH PROTECTION ROOFING
345 Per Bundle
240 SEAL DOWNS
3 BUNDLES 100 SQ. FT.
CASH & CARRY

CROSS BUCK STORM DOOR
WHITE BAKED ACRYLIC ENAMEL - 1" THICK - PREDRILLED FOR ALL HARDWARE - READY TO HANG
32x80 Reg. 37.95
36x80 \$34.47
Saturn All White \$24.45
Pawnee Mill Fin. \$19.95
Right or Left CASH AND CARRY

West Side Yard
★ 12222 INKSTER RD. 937-9111
PINE LUMBER CASHWAY

OPEN THURS. & FRI. EVENINGS 10 to 8 p.m.
OPEN SUNDAY - 10 a.m. to 4 p.m.

Lincoln Park
3235 FORT ST. 386-5177
PINE LUMBER CASHWAY

OPEN Thurs. & Fri. Evenings 10 to 8 p.m.