

Bogarin Named SC Registrar

Russell S. Bogarin, director of financial aids and placement the past four years, has been appointed registrar of Schoolcraft College.

President C. Nelson Grote announced the appointment at the board of trustees meeting on June 22.

He said he was pleased with the selection of Bogarin because "the job demands a special kind of person, and having that person already on staff enables us to accomplish a very smooth transition in this important function."

Bogarin succeeds Norman E. Dunn who retired this year from the post he has held since formation of the college.

THE REGISTRAR is

responsible for conducting of financial aids and placement the past four years, has been appointed registrar of Schoolcraft College.

Bogarin entered the profession in 1956. He has been a counselor at Schoolcraft, Eastern Michigan University, the Lincoln Laboratory School in Ypsilanti, and was guidance director for the Van Buren Public Schools in Belleville.

He holds degrees from Northern Michigan University and the University of



RUSSELL S. BOGARIN

Michigan, and currently is working toward an education specialist degree at Eastern Michigan.

A past president of the EMU Chapter of Phi Delta Kappa, Bogarin belongs to numerous professional organizations.

He recently worked on a committee which developed a standardized financial aid application for use by all Michigan community colleges this coming academic year.

Some Program Cuts 'Continuation' Budget At SC

By KATHY MORAN

Schoolcraft College trustees approved a \$6.6 million budget last week, an eight per cent increase over the past year, after lobbying more from \$700,000 from early projections.

The budget is up nearly \$500,000. It reflects \$5.3 million or 82 per cent for salaries.

President C. Nelson Grote termed the budget a "continuation budget, but it is reduced in many ways." The fiscal year began July 1.

The college will receive \$2.57 million in state appropriations plus a \$100,000 state special grant. The grant was tacked on to the appropriation after Schoolcraft suffered a \$211,000 loss from original state projections.

When the state appropriations formula was changed, Schoolcraft's appropriation was cut.

GROTE COMMENDED

State Sen. Carl Pursell (R-Plymouth) and State Rep. Marvin Stempley (D-Livonia) for working toward getting the \$100,000 grant and helping it stay in the budget as the bill was under review.

The State Equalized Value (SEV) of the college district is up 7.76 per cent over last year, increasing from \$1.34 billion to \$1.44 billion.

The college board again voted to levy the full 1.77 mills for operations and debt retirement for the college. The levy will raise \$1.70 million for college operations and an additional \$158,000 for debt retirement.

Student enrollment will be

up nearly 300 full time equated students this year, but this figure is more conservative than 400 originally projected.

The college expects to generate 123,000 credit hours this year from students, raising \$1,987 million in tuition. Tuition was increased this year by 10 percent, making it \$11 per credit for in-district students, \$22 for out-of-district and \$33 for out-of-state students.

The tuition revenue will be up \$158,000 because of the tuition hike.

ALSO INCLUDED in the college's income is \$204,000 in federal grants, which include funds for the vocational education programs.

College expenditures are broken down into \$3.88 million

for instruction, \$542,000 for student services, \$408,000 for general administration, \$381,000 for business operations, \$227,000 for plant operations, \$281,000 for contingency, and \$199,000 in restricted accounts for transfers.

The large "contingency" includes funds for the salary and fringe benefits being bargained for currently in the faculty and physical plant employee contracts. It also includes a safeguard for unexpected expenses and to offset a potential cutback in state appropriations. Last year the college lost \$47,000 after an appropriations reduction of two per cent.

DURING THE public hearing on the budget prior to its adoption, Dr. Grote listed a

number of items and positions that would not be included in the budget because of a lack of funding.

The budget does not allow for hiring an institutional research coordinator, systems analyst, publications assistant, counselors for financial aids and placement and the counseling staff, para-professionals in student activities office and a female security officer.

The research coordinator and systems analyst are positions the college has attempted to fit in the budget for the past two years.

It also leaves out money for exploring new methods of instruction and for initiating any new programs where consultants services or other added costs are incurred.

SC Medical Lab Tech Course Set

A medical laboratory technology curriculum will be added to the course offerings at Schoolcraft College in 1973-74.

Establishment of the program was delayed a year until completion of an addition to the vocational-technical building and because of tight financing for the coming school year.

After the college received inquiries from local hospitals regarding training of medical laboratory technicians, the college established an advisory committee to determine the need for technicians and the type of training required.

Composed of hospital representatives and college personnel, the committee surveyed clinics and hospitals in the metropolitan area and found a current need of 117 technicians and an estimated need of 386 technicians within the next five years.

The curriculum will provide the student with general education and technician training. It will prepare the student to perform clinical laboratory functions under the supervision of clinical

Cynthia Adams, supervisor of St. Mary Hospital in Livonia; and Mary Smith, director of health careers at Schoolcraft.

Education and an application for approval was filed with the Vocational Education and Career Development Service of the Michigan Dept. of Education.

Approximately 15 students will be accepted into the first year of the program with 25 students expected by the third year.

The technology courses will include hematology, coagulation, urinalysis, serology-blood bank, clinical bacteriology, applied biochemistry, and two clinical application cooperative courses.

Members of the advisory committee were Jon Adams, dean of applied sciences; Dr. William Dito, Pontiac General Hospital; Dr. Otterbein Dressler, pathologist at Garden City Osteopathic Hospital; Dr. Allen Fox, pathologist at Detroit Osteopathic Hospital; Eleanor Kasperick, blood bank of Detroit Osteopathic Hospital; Andrew Matures, technologist at Wayne State University's College of Medicine; Donald LePia, Riverside Osteopathic Hospital in Trenton; Sister Mary Smith, supervisor of St. Mary Hospital in Livonia; and Mary Smith, director of health careers at Schoolcraft.

THE PROGRAM was approved by the State Board of

Walter's

NORGE 6000 BTU

by FEDDERS
HIGH CAPACITY



3 SPEED

154⁸⁸

SLIDING WINDOW

188⁸⁸

10,000 BTU.



Model C7228UWA
Contemporary styling. Finished to match Walnut
"23" picture measured diagonally, 23 1/4" x 16 1/4"

• HI-BRITE COLOR PICTURE
gives you more color brilliance; brighter, sharper color pictures

ACT NOW
ON PHILCO
A.C.T.

\$354⁸⁸

PHILCO

PHILCO 2-Door

15.8 cu.ft. Refrigerator-Freezer



The better idea people in refrigerators.
Only 30" wide

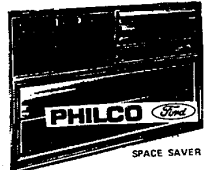
• 133 lb. capacity freezer
• 2 freezer door shelves
• Adjustable cold control
• 4 refrigerator shelves
• plus built-in shelf

\$228⁸⁸



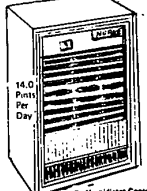
FRIGIDAIRE!

AIR
CONDITIONER
6000 BTU
\$147⁸⁸
AEC6LT-2



PHILCO SPACE SAVER

AIR
CONDITIONER
9000 BTU
\$177⁸⁸
A59K1



NORGE Dehumidifier

\$58⁸⁸



5 CU. FT. REFRIGERATOR FORMICA TOP

\$79⁸⁸



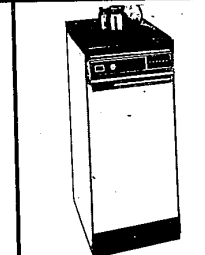
2 Door 12 CU. FT. REFRIGERATOR

\$179⁸⁸



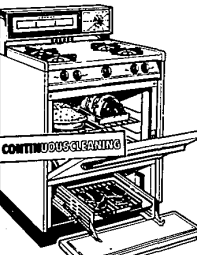
Heavy Duty 18-Pound

Kelvinator
Two-Speed
Washer
\$176⁸⁸



TAPPAN TRASH COMPACTOR

\$179⁰⁰
NO MESS
Tappan Compactor reduces trash up to 1/4 normal volume.



TAPPAN 30" GAS RANGE

\$179⁰⁰



TAPPAN CUPBOARD

\$179⁰⁰



TAPPAN UPRIGHT FREEZER

\$148⁸⁸



TAPPAN UPRIGHT FREEZER

\$148⁸⁸
350 lbs. Family Size Freezer



TAPPAN UPRIGHT FREEZER

\$148⁸⁸
350 lbs. Family Size Freezer



TAPPAN UPRIGHT FREEZER

\$148⁸⁸
350 lbs. Family Size Freezer



TAPPAN UPRIGHT FREEZER

\$148⁸⁸
350 lbs. Family Size Freezer

YOUR CHOICE FROM WALTERS **\$179**

OPEN DAILY - 9 to 9
CREDIT TERMS AVAILABLE

Walter's HOME
34224 PLYMOUTH LIVONIA 427-7310
21747 MICHIGAN DEARBORN 563-1900
39915 MICHIGAN AVE. WAYNE 728-9600
WAREHOUSE OUTLET
WE WILL NOT BE UNDERSOLD

BIG BIG CLEARANCE SALE

20 to 50% OFF



We must move 100 pools to make way for winter stock items. This results in huge discounts and big, big savings for all bargain shoppers. Now save 20 to 50% on our complete line of steel and aluminum pools (many models to choose from), and two locations to serve you. Come in now and you'll find that a Bond-Bilt pool costs much less than you ever thought possible.

HAVE A HAPPY HOME

CALL BOND-BILT CONSTRUCTION CO. 563-8182
THE GREAT AMERICAN HAPPINESS MAKERS
HOURS: Daily 10:00 to 9:00, Saturday 9:00 to 5:00, Sunday 10:00 to 5:00
25325 FORD ROAD, W. OF TOLSON RD. EAST SIDE: 13430 E. Elmer Hill Rd. West of Schoonery: 372-1300