

Suburban Gardener

Orange Flowers Give Garden Cheerful Touch

By BETTY FRANKEL
Special Writer

What is that spot of orange gleaming by the roadside and that patch of orange in the meadow? They glow like beacons. And what are those orange flowers clustered at the base of an old tree and clambering up a bank at the edge of the golf course? Chances are the bright flowers in the meadow and by the roadside are orange milkweed. They are real wild flower gems. Not rare, but not really common, either. They have small, intricately formed flowers that are clustered to make a large flat flower head. Monarch butterflies, often seen flitting about them, have caused them to be known, also, as butterfly weed. The orange flowers at the base of the tree are undoubtedly tawny daylilies. They are of a somewhat more subdued hue than the orange milkweed. They are a common wild flower, but are nonetheless a pleasant sight to see. These were treasured garden flowers in colonial times but have escaped from gardens and become "wild." These orange flowers glow like jewels against a setting of green foliage. They have a

warmth and intensity that is unrivaled. Strangely enough, though, there are relatively few orange flowers. There are only a handful of orange-bued wild flowers and really not a great many garden plants with orange flowers.

ASIDE FROM the orange milkweed and tawny daylily the other wildlings that come in shades of orange are really rather rare.

It is not often that one finds a clump of Canada lilies or Michigan lilies nodding in a sunny meadow, or sees a wood lily or turk cap lily unfurling spotted orange petals deep in a woodland glen.

Orange flowers in the garden are as cheerful to see as those growing in the wild. Even a few blooms can liven up the garden and a clump or two can be a real focal point. They are best used as orange is used indoors for an accent to spark a neutral color scheme.

Use them in front of evergreens for a striking effect, or they can be combined with other flower hues. Orange flowers combine beautifully with shades of gold and yellow for a blended effect. They can be used with white and misty blues for crisp contrast, or they can be

combined with pink flowers for an unusual color scheme rather like a Persian tapestry or Indian print.

Among the annuals, first choice goes to the marigolds. There are both dwarf forms and tall bushy kinds with vivid orange blooms. There are zinnias, too, with orange flowers. Among the perennials are the varieties known as Aztec Torch, and Bonanza.

CALIFORNIA poppies, Mexican poppies and Shirley poppies all have orange varieties. The foliage on all of these is rather delicate looking and the flowers have silky petals that are exquisite.

Cosmos, generally seen in pale shades of pink and white, are also available in a vivid orange. Look also for Calendula, annual chrysanthemums, and African daisies in various shades of orange ranging from pale orange sherbet to vivid flame tones.

Among the orange perennials that can highlight the garden there are oriental poppies which bloom in early June, and Iceland poppies which bloom more or less continuously throughout the summer.

Daylilies have many fine hybrids with orange - toned flowers. Some are a delicate peach color and others are more vivid. These are fine additions to the garden - hardy and dependable and disease free.

LILIES can be planted to provide an orange gleam. "Enchantment," regarded as the easiest lily to grow, has clusters of upturned red - orange flowers in late June and early July. There are other orange - toned lilies available including both hybrid forms and the wild species types.

Other bulb flowers come in shades of orange, too. These include tulips, gladioli, and dahlias. Another spectacular display of orange flowers is provided by the trumpet vine. This is laden at this season with long, tubular flowers of vivid orange.

So if your garden needs a lift, plant an orange flower, or for a season of cheerful bloom choose a sequence of plants that will provide that cheerful orange accent.

Butcher Blocks Popular

If you love an eclectic blending of period styles but hate the cold, clinical appearance of much of today's modern furniture, if you're charmed by the look of clean lines and revel in the salty texture of smooth surfaces, then the latest decorating craze, the butcher block, has a definite place in your home. Once used exclusively in the kitchen, as the name implies, the butcher block functioned in olden days as a "giant" cutting board. It was ideal for

absorbing chopping blows and the blades of sharp knives remained keen when cutting was done upon a hardwood block.

Made of hardwood strips or blocks, laminated under pressure, the butcher block, in both old and new versions, features an array of intricate wood figure patterns, a variety of different natural wood colors and an interesting configuration of individual shapes and sizes arranged to form a solid wood piece.

Most butcher blocks are, in fact, made of maple, birch, pecan or beech, which are strong, sturdy close-grained woods also known for their decorative value.

BUT WHILE the butcher block still enjoys growing popularity in modern kitchens, where it is used for counter tops and smaller decorative accessories, enterprising manufacturers are converting the "block" concept into exciting furniture designs.

Butcher block tables for dining room and living room are now available, offering a multitude of assets in additional hardwood favorites such as oak, walnut, cherry and ash. Not only does the butcher block blend well with both traditional and contemporary decor, but the penetrating natural finish of the wood is a snap to care for.

Surfaces need only be dusted or oiled, while scratches can easily be removed by sanding with a fine grade of sand paper. The ideal dining table, butcher blocks are spill and stain resistant.

AS THE DEMAND for the "natural look" in decorating reaches a new fervor, manufacturers of fine wood furniture have also begun to produce a variety of chairs and sofas in the block motif, featuring butcher block frames and downy cushions.

Perfect for living room, playroom, or den, this new hardwood seating is comfortable, sturdy, and high in decorative interest.



A FAVORITE IN 19TH century households was the practical yet pretty Sandwich glass.

Collectors Prize Sandwich Glass

Sandwich is more than something for lunch.

It's a type of early American glassware that sings with color and glitters with light, one of this country's great heritages like the Brooklyn Dodgers, silent movies and the Model T.

Sandwich glass derives its name from the Boston & Sandwich Glass Co., in Sandwich, Mass., where it was produced from 1825 to 1888 in the glass industry's first hand-pressing operation.

The intricate designs and lacy loveliness of Sandwich glass, coupled with New England practicality, made it a favorite of 19th century households.

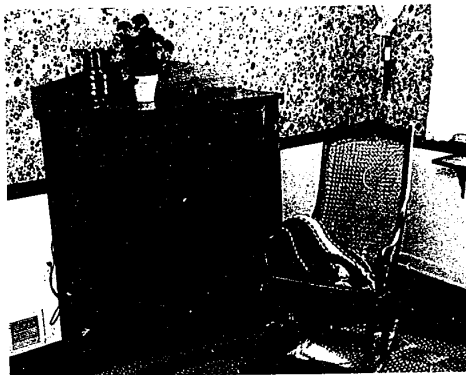
Good community of Sandwich.

The company banked its fires for good in 1888 during a labor dispute, and after 63 years of production Sandwich had become a household word throughout New England and America.

After 1888 Sandwich soon disappeared from practical table use and began to appear on collector's shelves; Sandwich lost its original, specific meaning and the word came to be used generally to denote a lacy, frilly design.

The variety and multitude of designs and patterns that gave Sandwich its popularity and uniqueness were created in a hand-pressed operation.

Up to the introduction of hand-pressing, glass was blown, making it an expensive commodity not everyone could afford.



AN OLD PINE CUPBOARD that belonged to her great-great-grandparents and a Lincoln rocker carry out the Americana theme of Amy Andrews' bedroom. The eyelet embroidered cover on the tennis racket is a strictly feminine touch. (Observer photo by Bob Woodring)

Pest Of The Week

THRIPS ON PRIVET HEDGE

Many complaints have been received from homeowners this year on defoliation of privet hedge. It is caused by a small, sucking insect (thrips) on the backs of the leaves. These small insects are yellow, spindle or cigar-shaped in the larval stage, and can be readily seen with the naked eye.

The larva are wingless. The adult is dark brown to black, with a bright red band. Foliate will have a grayish, dusty appearance.

CONTROL: Spray foliage with Diazinon (Spectraide) or Malathion twice, 14 days apart, when damage begins. Malathion 50 per cent emulsion, or Diazinon emulsion, two tablespoons per gallon, concentrate on undersides of the leaves.

Believe it or Not The SUMMER SIZZLE SEASON IS Here!

CHECK THESE COOL PRICES ON FEDDERS CENTRAL AIR CONDITIONING SYSTEM!

Prices include condensing unit, "A" coil, 21 foot tubing package and heat coil thermostat. Package is complete to "do-it-yourself" or installation available.

2 TON 24,000 BTU	2 1/2 TON 30,000 BTU	3 TON 36,000 BTU
\$398	\$494	\$596

Call Now for a Free Home or Commercial Estimate

MERCURY COOLING & HEATING, Inc.

538-9000

HOME IMPROVEMENT MONTH

HOME MODERNIZING SPECIALS

NOW—STOCK CABINETS FOR IMMEDIATE DELIVERY

ALL 30% OFF

10 SECTIONS 35% OFF
15 OR MORE 40% OFF

WE'LL HELP YOU PLAN!

Hotpoint APPLIANCE VALUES

DISHWASHER	HI-LOW	REFRIGERATOR
199 ⁹⁵	449 ⁹⁵	469 ⁹⁵
DEDUCT 50.00 WITH 250.00 OR MORE CABINET PURCHASE.		

STEEL GUTTER

5" K Style White Enamel

10' Gutter	2.89
10' Downspout	2.49
Connectors	1.39
Drop Outlet	1.19
7" Spikes	.09
End Caps	.29

ALUMINUM Comb. DOORS

OUR BEST FOR PRICE FULL 1" FRAME #500 Mill Finish

18⁹⁵

Colonial X-Buck Full 1 1/4" FRAME

SAVE 4.00 NOW **34⁹⁵**

PATIO PANELS

5 oz. Heavy Weight Plastic

26"x36"	2 ⁴⁹
REG. 2.99	
26"x120"	3 ⁴⁹
REG. 3.89	
26"x144"	3 ⁹⁹
REG. 4.89	

2"x4"x8' Utility STUDS

88¢ EA.

REDWOOD PICKETS

1"x3"x4" Gothic Point

39¢ EA.

ROOFING

SELF-SEAL ASPHALT SHINGLES

Choice of 8 Colors in Stock

\$3⁴⁹

BUNDLE 3 Bundles = 100 SQ. FT.

ALUMINUM SIDING

EXTRA SAVINGS NOW LESS BACKER

1 to 5 sqs.	6-10 sqs.	11-15 sqs.
24 ⁹⁵	23 ⁹⁵	22 ⁹⁵

WITH BACKER

29 ⁹⁵	27 ⁹⁵	26 ⁹⁵
------------------	------------------	------------------

Redwood Fence

4x8'	12 ⁹⁹
5x8'	14 ⁹⁹
6x8'	16 ⁹⁵

Olympic Stain

The ideal wood finish

6⁵⁰ Gal.

Quality Dimension Lumber

	2x4	2x6	2x8	2x10	2x12	4x4
6'- .68	1.06	—	—	—	—	—
7'- .84	—	—	—	—	—	—
8'- .99	1.38	1.95	2.37	3.33	2.42	—
10'- 1.29	1.57	2.44	3.20	4.30	3.03	—
12'- 1.57	2.23	3.58	4.40	5.35	3.63	—
14'- 1.83	2.63	4.01	5.25	5.99	4.24	—
16'- 2.30	3.44	4.44	5.92	6.98	5.08	—

Plywood - Particle Board

SIZE	INT.	EXT.	SHTG.	P.C.	125-UP
4x8	—	—	—	—	—
1/4	4.39	4.79	—	—	—
3/8	5.89	6.29	4.29	3.19	3.09
1/2	7.39	7.99	5.49	3.29	3.19
5/8	8.69	9.39	6.79	3.59	3.49
3/4	9.59	10.45	8.19	5.59	5.49

Redwood Boards - Dimension

CLEAR HEART	6	8	10	12	14
1x4	.93	1.36	1.70	2.05	2.39
1x6	1.49	2.18	2.72	3.27	3.81
1x12	3.06	4.49	5.61	6.73	7.85
2x4	2.26	3.31	4.14	4.97	5.80
2x6	3.39	4.97	6.22	7.46	8.70

Construction for Patio - Fence

	6	8	10	12	14
1x4	.63	.92	1.15	1.39	1.62
1x6	.95	1.39	1.73	2.08	2.43
2x4	1.24	1.82	2.27	2.73	3.18
2x6	1.86	2.73	3.41	4.09	4.77
4x4	2.64	3.87	4.84	5.81	6.78

4"x6" SANTA ROSA REDWOOD 52' LIN. FT.

PATIO-LAWN-GARDEN PICNIC TABLES—LOW AS 24.25—6'

REDFORD CASHWAY LUMBER

CASH OR CARD

DRY-WALL

	3/8"	1/2"
4x7	1.59	1.89
4x8	1.69	1.99
4x10	2.79	2.99

ROYAL OAK 648-2163
803 SO. MAIN
Corner of Lincoln
8 to 5:30 DAILY, FRI. TIL 8:30

LIVONIA 261-6110
11970 FARMINGTON ROAD
Just South of 10 Mile Rd.
8 to 9:30 DAILY — 8:30 THURS. & FRI.

WARREN 776-7000
24620 SCHROEDER RD.
Just South of 10 Mile Rd.
8 to 9:30 DAILY, FRI. TIL 8:30