

LWV Compiles Figures For Predictions

WASHINGTON, D.C. A prediction that women will be celebrating the enactment of the equal rights amendment to the U.S. Constitution by next May was released by the national president of the League of Women Voters, along with voting figures indicating that in the November election, women could, for the first time, vote in greater percentages than men.

"State legislatures are ratifying the equal rights amendment at about the same pace they took action on the woman's suffrage amendment," the league announced.

FIVE MONTHS after Congress approved the 19th Amendment (June, 1919), 19 out of the necessary 36 state legislatures had given their approval. Five months after the March 1972 Senate passage, 20 out of the necessary 38 states have acted affirmatively on the amendment.

"If the pattern continues to hold," said Lucy Wilson Benson, league president, "the enactment of the 27th Amendment will come in May of next year."

"Legislators have not forgotten their suffragist roots," she continued, "and in state legislatures where action is still to come, we'll be working for women's rights just as hard as our predecessors lobbied for the right to vote."

AS TO THE WOMAN'S impact on the upcoming election, a recent Gallup Poll shows that women and men are even in registration (74 per cent each) but women's turnout record in the last five elections has run an average of four percentage points lower than the men.

However, Mrs. Benson feels that "with the indisputable upsurge in women's interest in politics there's an excellent chance that we will surpass the men's voting record."

The league's figures indicate that if all the women who are registered to vote, women will cast about six million more votes than men. Then too, according to the U.S. Census figures, women outnumber men with a slight edge in the 18-24 year old group, the first-time presidential vote category.

But figures fail to give any indication on which way the

New Series For Diabetics Begins Oct. 31

Diabetics and their families can learn about diabetes mellitus, its control, its treatment and the relationship of diet to the condition in classes sponsored by the Wayne County Department of Health.

A series of classes for diabetics and their families will begin Tuesday, Oct. 31, in Room 200, Wayne County Health Center, Merriman Road, Elsie.

Classes will meet from 7 to 9 p.m. for five consecutive Tuesday evenings.

All diabetics regardless of age may attend with written approval from their physicians. Children under 14 must be accompanied by a parent.

To register, call the Wayne County Health Department.

Open Living

Strong appeal of exposed planks and beams in open plan construction is illustrated colorfully in an eight-page booklet available for 15 cents in coin from Western Wood Products Assn., Dept. 533-F, Yeon Bldg., Portland, Or. 97204.



BUY NOW!
OFF SEASON
PRICES
SAVE!
Siding, Roofing, Gutters
**FULLY
GUARANTEED**
**FOLEY SIDING
and ROOFING**
474-2148

woman's vote will go. In the last six presidential elections, according to Gallup Polls, women have gone with the winner three times (Eisenhower twice and Johnson) and with the loser three times (Dewey, Nixon, and Humphrey.)

The league also released some Then (1920) and Now (1972) figures showing the upsurge of women's participation in government.

In 1920, 26 per cent of the women voted. In 1972, 60 per cent are expected to vote.

In 1920, there were no women serving in Congress.

In 1972, there are 12 women in the House and two in the Senate.

In 1920, the Democrats had 93 women delegates to the convention and the Republicans had 27 women delegates.

In 1972, there were 1,271 women delegates to the Democratic Convention and the Republicans had 469.

After the 1920 elections, there were 37 women serving in state legislatures. In 1972, there are 383 women serving in state legislatures.

POW Bracelets

Prisoner of war bracelets are available in this area from an organization in Troy. For information, write to Vital Voices in Vital America, P.O. Box 71, Troy, Mich., 48064.

INNER SPRING
MATTRESS and BOX
SPRING

EASY
TERMS

\$59.95

**LAUREL
FURNITURE**

FREE DELIVERY EAST TOWNS

584 W. Ann Arbor Tr.
Way, Liberty & Main Sts.
Open daily 9:30 a.m. - 6 p.m.
Phone 876-1030

SALE

Durable Carpet Styling feature for today!

Shadow lawn

Carpets by
Congoleum



Normally \$5.95

NOW 3.99
SQ. YD.

This sculptured multi-level loop carpet will surprise you with its value packed assets. "Shadow Lawn", in a wide range of coloration, has a beauty that is long lived and easy to maintain—it actually resists soiling. Whether a new home or remodeled room, the sculptured tri-level styling of "Shadow Lawn" can make your floor a feature in decor.

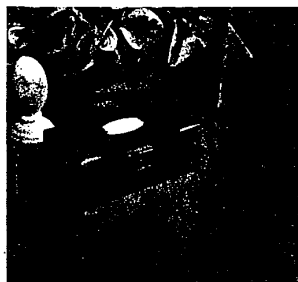
DO YOU WANT BEAUTY?
DO YOU WANT COLOR?
DO YOU WANT COMFORT?
DO YOU WANT
"CLEANABILITY?"
DO YOU WANT A
GUARANTEE?
DO YOU WANT THE BEST?

**BUY
Congoleum!**
One of the Largest Carpet Mills!

WE HAVE MANY MORE CARPETS
ON SALE THIS WEEK AND
NO-ONE BEATS OUR PRICE!
One of the Largest Selections in this State!

Windsor Gate

The durable nylon carpet



"Windsor Gate" is ruggedly constructed to handle all the punishment an active family can hand out. Here's a level loop nylon in attractive tri-color combinations from Carpets by Congoleum that features jute and high-density backing for noise absorption and comfort.

It's available in a large assortment of popular colors and comes in 12' widths for seamless installation.

Normally \$6.99
NOW 4.99
SQ. YD.

Carpets by
Congoleum

The Easy Life Carpeting ... Provincial Court

Carpets by
Congoleum



Normally \$7.95

NOW 5.49
SQ. YD.

Whether you have Colonial or Mediterranean decor, the "Provincial Court" motif with its brilliant color selection will add character to your room. Life is made easy with the Antron® Nylon. It is soil resistant and easy to maintain. "Provincial Court" will give excellent wear for a longer more comfortable life, thanks to the built-in cushion provided by its high density foam backing. See it today!

Color • Color • Color • Color
Boldest Shag Carpet Available!

Maxi

Carpets by
Congoleum



Normally \$9.95

NOW 7.49
SQ. YD.

The natural shag for the lively home. The heat set nylon is constructed for long wear and easy care. The exclusive "Maxi" 4 color treatment will create a fun home to match its personality in color.

In a rainbow of decorative colors.

A deep Shag Carpet
of Contrasting Beauty!

Western Sands

Carpets by
Congoleum



Normally \$8.95

NOW 6.99
SQ. YD.

The high styling elegance is immediately noticeable from solid tones to multi-color effects. Unseen, but strongly present, is "Western Sands" high wear and soil resistance. The heat set nylon yarn cleans easily and resists fading. Your home will invite the "shoes off and be comfortable" attitude.

Available in a range of shimmering colors.

Cary's CARPET Co.

Just S. of 8 Mile 477-1636
20319 MIDDLEBELT 477-1290