

Is it Mark McQuesten? YES (McQuesten is a former Schoolcraft student, recent unsuccessful Democratic primary candidate for Wayne County board of commissioners)

Now that Farmington's Mayor Brotherton has been elected to the Oakland County board, who will replace him as mayor? Do you know the answer? YES

Will it be Commissioners Richardson, Siebert, or Allen? NO (Editor's note: The name of Mayor Pro-Tem Ralph Yoder was inadvertently omitted.)

Who will replace Mayor Brotherton, then? TEXTADTBEG

Will it be a man? YES

A local man? YES

Has he been in the administration? YES

Until what year will Ron Upton remain as Livonia school superintendent? 1973

Southfield's Mayor Norman Feder will leave that office January 1 to become a district judge. Who will replace him? ACOCBBP

Is it a man? YES

Initials, please. TAAAPDD

Several Observerland politicians have their eyes on high state office. Will any of them be successful? YES

Will Livonia's Mayor Ed McNamara be elected to higher office? YES

When? 1984

Will he be re-elected mayor of Livonia in 1973? YES

Will he be ill while in office? YES

Will one of his opponents in the 1973 race be Harvey Moelke, former Livonia Mayor? YES

Do you know anything about the Tonquish Creek Yacht Club (TCYC)? YES

Will the TCYC obtain federal funds to link Plymouth with the sea? NO

Will the swinging aqueduct be built? NO

Will Plymouth schools capitalize on the nautical knowledge of the TCYC to institute vocational training in marine navigation, etc? NO

Will the TCYC ever expand its membership? NO

Will Schoolcraft College become a four-year college? YES

When? 1983

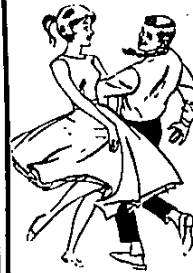
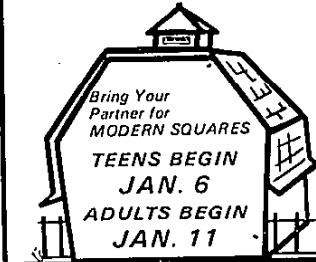
What will that do to Madonna College? S W A P

Will Observer Newspapers go daily? YES

When? 1982

HURRY!
TIME'S RUNNING OUT!
JOIN US
NOW FOR A
GOOD OLE' TIME

AND
ENROLL IN OUR
FAMOUS MODERN
SQUARE DANCING



DON'T
WAIT...

Call
474-0335
Or
476-4898

MODERN SQUARES
36728 W. 7 Mile

OPEN
HOLIDAYS

FOR YOUR CONVENIENCE
WE'LL BE OPEN
FROM 10-4

This Sunday and Monday
and every holiday



GIVE FLORAL GIFTS
THIS HOLIDAY SEASON
FROM ONE OF THE
NEWEST ADDITIONS
TO THE MERRI-5 CENTER!

• **FTD FLORIST**

When you need flowers phone your order in & we'll charge it...conveniently. Metropolitan City-Wide delivery arrangements for ALL OCCASIONS:

• **WEDDINGS** • **PARTIES**
• **HOSPITALS** • **FUNERALS**

Ask about Our

Convenient

SPEED-A-GIFT SERVICE
LIVONIA FLORIST

31110 W. 5 MILE, LIVONIA

In the Merri-5 Center
Daily 9-8 Sun.
and Christmas 10-4

STILL
TIME
TO
SHOP

AT ALLIE BROS. - FOR THAT
PERFECT CHRISTMAS PRESENT
We're keeping our doors

FAMOUS
MAKER
BELTS

OPEN
SUN.
for
you
last
minute
Shoppers

FAMOUS
MAKER
TIES

FAMOUS
MAKER
BATHROBES

FAMOUS
MAKER
SHIRTS

ALL

15%
OFF

ALLIE
BROS.
CUSTOM TAILORS

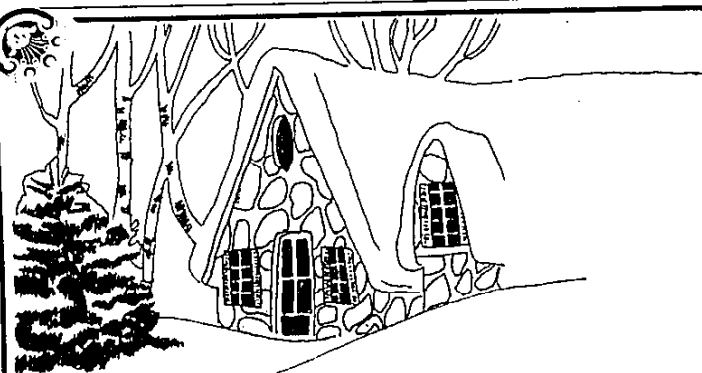
20331 MIDDLEBELT, LIVONIA

Just South of Eight Mile

477-4434

HOLIDAY HOURS
WED. - SAT. 9-9

Open This
Sunday 10-6



*Happiness . . .
is Christmas*

At home surrounded by family and friends -- Home is where the heart is -- and an almost sacred responsibility for us in the real estate business. We do our best to accept it.

J. L. HUDSON Real Estate

479 S. MAIN ST.
PLYMOUTH



453-2210



SEMI-ANNUAL
PLAYTEX® BRA &
GIRDLE SALE

NOW THRU JANUARY 13

SAVE \$1.01 to \$2.01 ON

- Living Bras
- Longline Bras
- No Visible Means of Support Bras
- New Double Diamonds Waist Controller Girdles and other models

OPEN SUNDAY 12-4 P.M.

Minerva's
Dunnings

500 FOREST GL 3-0080
PLYMOUTH

HOURS DAILY 9 to 9 P.M.
FREE PARKING AT REAR OF STORE