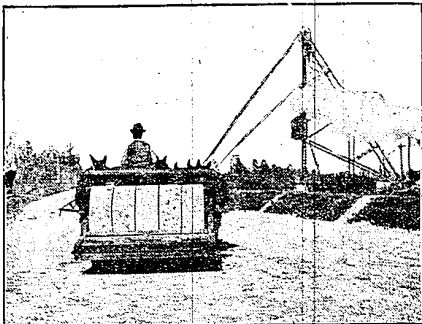


Permanent Features of the Road Bed

Foundations, Drainage and Grading
a Permanent Investment

(Prepared by the U. S. Department of Agriculture)



Rolling Shell Road, New Orleans.

A five-pound package of Alabastine, the beautiful wall tint, is mixed with two quarts of cold water, stir for about one minute, and Alabastine is ready to apply.

New and individual shades or tints can be obtained by combining regular tints.

And when you consider that you obtain the most beautiful, mellow, nature colors, viz., soft buff, delicate green, and exquisite blue, or any shade you wish by combining shades of Alabastine, then you'll know why Alabastine is one of the most popular wall decorations with millions of Painters and Householders, Decorators and Womenfolk, who take a pride in their homes the wide world over.

Write for Free Book
"The Mystery of the Lost Woman"
and Free Color Scheme Cards

Special Stencil Offer

Stencils are for better designs. In the regular way they would cost you from \$10 to \$15.00 each. Our free book tells you how to make your own stencils for less than one penny each. Our Color Scheme Cards suggest color combinations for your home. You should have our free book. Write for free Color Scheme Cards. Write for them today.

The Alabastine Co.

381 Grandville Rd. Grand Rapids, Mich.

Be sure you get Alabastine on each package of Alabastine you buy. Alabastine is sold by most druggists, hardware stores and paint stores everywhere.



City Without Private Houses.

In one respect—a point not so flattering to metropolitan complacency—New York is unique among great cities: Manhattan is a city without private houses. In the last fifteen years few private dwellings have been built, except those of millionaires. In that same period thousands of the old brownstone fronts of a previous generation have been dismantled to make way for tenements and apartments. Forty years the city has been undergoing a process of "tenementization." New York is a city almost exclusively of tenements and apartments—that is its most striking architectural and social characteristic.

Couldn't Evade "Special." A Lancashire man who has a hen roost near the railway was complaining to a friend about having some of the birds killed by passing trains. "This should hang on a timetable up in the house, and then they could look when the trains were booked to come past," said the friend. "Timetable be hanged!" said the other. "They know well enough when the ordinary trains'll pass. When A'we'd had one killed it's allus bin wiv a 'special'."—London Tit-Bits.

Naturally. "He's a very polished gentleman." "That's why he shines in society." Boston Evening Transcript.

The plain, unvarnished truth is better than questionable rhetoric.

Ever Eat Grape-Nuts?

There's a vast army of physical and mental workers who do.

One reason—it's delicious nut-like flavor.

Another—it is easily and quickly digested—generally in about one hour.

But the big reason is—Grape-Nuts, besides having delicious taste, supplies all the rich nutriment of whole wheat and malted barley, including the "vital" mineral salts necessary for building brain, nerve and muscle.

Always ready to eat direct from the package, Grape-Nuts with cream or good milk is a well balanced ration—the utmost in sound nourishment.

"There's a Reason"

—sold by Grocers.

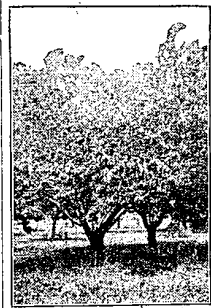
Horticultural Points

TILLAGE IN PEACH ORCHARDS

Do Not Resort to Commercial Fertilizers Until All Other Resources Have Been Exhausted.

The peach appears to be the most susceptible of all fruit trees to the influence of commercial fertilizers, says a writer in Practical Farmer. While results obtained by the various experiments in the use of commercial fertilizers on apples are contradictory, there appears to be a remarkable unanimity of results as far as the peach is concerned. Incidentally, many of the old theories regarding the proper feeding of peach trees have been overthrown.

Before entering into any discussion of fertilizer for peaches it might be well to digress for a few moments upon the subject of cultivation of the peach. From my personal observation I am fully convinced that not one man in ten who grows peaches realizes the importance of thorough tillage in the peach orchard. In many cases where commercial fertilizers have been employed with good results, the same re-



Elberta Peach Trees.

sults might have been obtained, and far more cheaply, if better methods of tillage had been practiced.

The peach grower should not resort to commercial fertilizers until he has exhausted the resources of tillage and cover crops. I have in mind a large orchard in central Delaware where the tillage had been of the best, and the care of the orchard above reproach, yet the trees began to decline in fruit production. A single test during the past season has shown that this particular orchard needs nitrogen and that a small application of nitrate of soda will mean the rejuvenation of the orchard.

NOTICE TO BERRY SHIPPERS

Law Requires That Crates Shall Be Marked With Statement of Quantity of the Contents.

A recent service and regulatory announcement of the United States bureau of chemistry contains the following, which should be of interest to shippers of berries, peaches and tomatoes when ordering their crates for the coming season's shipments: "The department is of the opinion that berries, peaches, or tomatoes in small open containers which are packed in crates and arranged within the crates in layers or tiers, constitute food in package form within the meaning of the netweight amendment, and consequently the law requires that the crates shall be marked with a statement of the quantity of the contents. Each such statement should include the number of small containers and the quantity of the contents of each."

THINNING AIDS FRUIT TREES

Overproduction of Seeds Exhausts Vitality—Orchardist Should Aim to Improve Quality.

Thinning makes trees live longer and produce more fruit in the course of time. The overproduction of seed exhausts the vitality of a tree, and is the chief cause of short-lived trees. Thin fruit hard and keep the trees alive and productive.

Thinning increases the fruit growers' profits by increasing both the quality and the quantity of fruit produced within a space of a few years, because he will have practically as much fruit to sell, of large size and better quality, and hence at better price, from trees that bear more nearly annually.

Handle Apples Carefully. The growers who produce the finest and highest priced apples instruct their pickers to handle the apples just as if they were eggs.

Top-Grafting Favored.

In unproductive orchards of but a single variety; top-grafting part of the trees with other varieties is recommended.

DAIRY

RATION FOR DAIRY COWS

High Protein Concentrates Other Than Corn Must Supplement Roughage—Oats Are Favored.

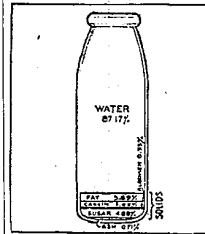
With fodder alone as roughage cows must have some high protein concentrates and they must be other than corn products. If the oats are worth less than middlings, it will be well to make them a part of the ration. Rye is as harmless as any other grain to a pregnant animal when not affected with ergot. If it is worth no more per pound than corn it may well be used in part. Cottonseed meal at the present time is a much cheaper source of protein than linseed meal, and with oats and rye or a wheat product in the ration also it may be used to supply the deficit of protein. However, if any cows appear to need a more laxative ration, better substitute linseed, at least in part, for the cottonseed meal.

It matters little to the cow whether the corn is shelled before being ground, or even whether it is ground so long as the cobs are soft enough to enable her to eat them readily. But to compound a ration from the list submitted: Using the corn in the form of meal and grinding both oats and rye, use one part by weight of each of these and two of cottonseed meal.

SOLIDS CONTAINED IN MILK

According to Best Authorities Fat, Casein, Sugar, Albumen and Ash Will Vary Somewhat.

The accompanying diagram shows that about 87 per cent of milk is water. Held in suspension therein is what is collectively known as solids. These are fat, casein, sugar, albumen and ash. It is generally understood that these milk solids vary more or less and it is impossible to make an accurate statement of the percentages.



Solids of Milk.

composition of milk unless it is analyzed. The average, however, has been worked out by authorities. According to them the different percentages for the solids and water vary somewhat, but the ones given in the diagram are as determined by Babcock.

BUTTER ALWAYS IN DEMAND

No Reason Why Farmer Should Not Complete With Creameries—Some Business Ability Needed.

There is plenty of room today for the private dairymen who want to market his cream in the form of butter. Because the creameries have nearly monopolized the retail milk trade is no reason why butter made on the farm should not compete successfully with the best of the creamery butter. This class of butter, which is made from but one herd of well-bred cows and from separated sweet milk, should form one of the most delicious articles of food, and can always command fancy prices when it reaches the right people. It requires some business ability to work up a select trade for any home product, yet it is not at all difficult to create a demand for a certain brand of butter among those who know a good article when they see or taste it and are willing to pay a little extra for what suits them.

DAIRY NOTES

Fresh air for cows, but no exposure to bad weather.

Corn silage, in the frozen state, should not be fed to dairy cows.

The greatest contamination of the milk flow occurs at the time of milking.

Milking the cow clean will develop her udder and help to increase her milk capacity.

It never pays to kill the heifer calves from the best cows. Raise them to replace the poor cows.

Milk must be promptly cooled and kept cold. The growth of germs is checked by cold.

Too much cannot be said about the way in which cows are treated in the stable. Kindness must prevail.

Frequent attention to distribution of the cows' bedding is just as important as to supply a large amount of it.

Another Testimonial

CALUMET BAKING POWDER

The President's Wedding Cake

was prepared by Mrs. Marian Cole Fisher and Miss Pansy Bowen, both of whom are known throughout the United States as experts in Domestic Science work.

This Wilson-Gale Wedding Cake was worthy of the occasion in every respect. Calumet Baking Powder was used in its preparation and both the above named ladies heartily recommend Calumet Baking Powder for its purity, wholesomeness, economy and never-failing results. These ladies use Calumet exclusively in all their work.

Received Highest Award World's Pure Food Exposition, Chicago, 1912.

NEWS SAID WOODRUFF'S Soda Direct From Factory to Wholesaler for \$1.00. Write us for our factory for more information. WOODRUFF'S Soda & Co., 111 N. 1st St., St. Louis, Missouri, 72.

Out of the State.

A dissatisfied citizen rushed into a police station and shouted for vengeance.

"The automobile that hit me five minutes ago was No. 4144," he spluttered.

"I can prove that he was exceeding the speed limit, and I want—I want—"

"You want a warrant for his arrest?"

"Warrant nothing! What good would a warrant do me at the rate he was going? I want extradition papers."

TAKE SALTS TO FLUSH KIDNEYS IF BACK HURTS

Says Too Much Meat Forms Uric Acid Which Clogs the Kidneys and Irritates the Bladder.

Most folks forget that the kidneys, like the bowels, get sluggish and clogged and need a flushing occasionally, else we have backache and dull misery in the kidney region, severe headaches, rheumatic twinges, torpid liver, acid stomach, sleeplessness and all sorts of bladder disorders.

You simply must keep your kidneys active and clean, and the moment you feel an ache or pain in the kidney region, get about four ounces of Jad Salts from any good drug store here, take a tablespoonful in a glass of water before breakfast for five days and your kidneys will then act fine. This famous salt is made from the acid of grapes and lemon juice, combined with lithia, and is harmless to flush clogged kidneys and eliminate them to normal action. It also neutralizes the acids in the urine so it no longer irritates, thus ending bladder disorders.

Jad Salts is harmless; it never makes a delicate and nervous person take now and then to keep their kidneys clean, thus avoiding serious complications.

A well-known local druggist says he sells lots of Jad Salts to folks who believe in overcoming kidney trouble while it is only trouble.—Adv.

Important Personage.

Ton—"Why were you so extremely polite to that old man?" Is he a rich relative?

Jack—Sh-h-h! That is my prospective father-in-law.

FOR ITCHING SCALP

And Falling Hair Use Cuticura Soap and Ointment, Trial Free.

When the scalp is itching because of dandruff and eczema a shampoo with Cuticura Soap and hot water will be found thoroughly cleansing and soothing, especially if shampoo is preceded by a gentle application of Cuticura Ointment to the itchy skin.

Free sample each by mail with Book. Address Postcard, Cuticura, Dept. L, Boston. Sold everywhere.—Adv.

Polite Man.

Landlord—I hate to remind you of your board bill.

Mr. Slowpay—Don't mention it!

ALLEN'S FOOT-EASE FOR THE TROOPS

Many war zone hospitals have ordered Allen's Foot-Ease, the antiseptic powder, for use among the troops. Shaken into the shoes and used in the foot-bath, Allen's Foot-Ease gives rest and comfort where, too, try it today. Adv.

The trouble with hitting the bottle is that it's apt to strike back.



Concrete Road After One Year's Use, Chevy Chase, Maryland.