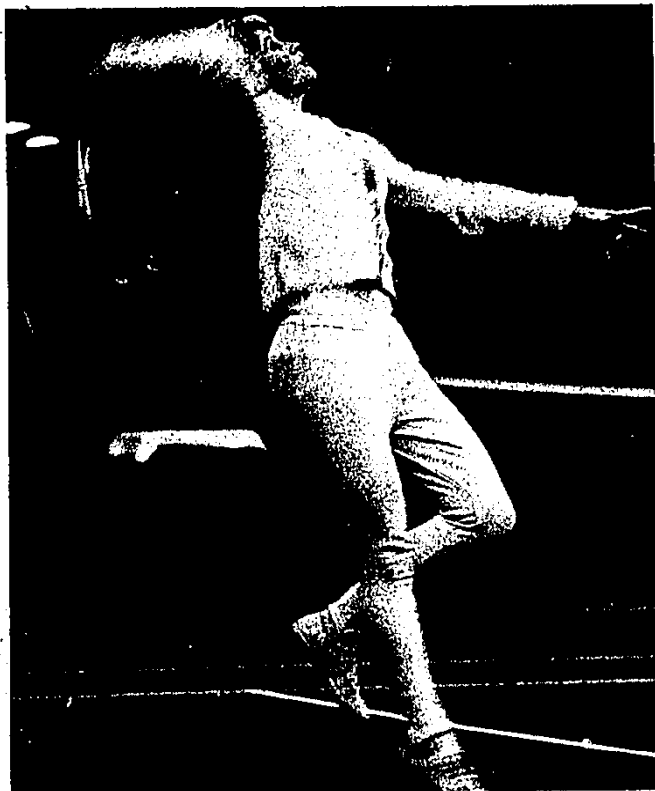


# indoor tennis



AN OVERHEAD SMASH, equally effective indoors or out.

By JUDITH BERNE

With all apologies to the skiers, skaters and snowmobilers of the country, the picture of a person trudging through the rutted snow of a parking lot, tennis-shoes on feet, tennis racquet in hand is becoming a symbol of winter.

The sport of tennis has had a phenomenal growth over the past few years—a growth that can be directly traced to the onset of indoor tennis.

Throughout the country in general, and in The Observer area in particular, indoor courts are opening and expanding as people discover and rediscover the excitement, exercise, challenge and fulfillment that can come from a well-matched game of tennis.

Most tennis facilities are run by businessmen who, with an eye out for profit, are jumping in feet first, competing for the consumer dollar.

**BUT IN LIVONIA**, an interesting story is unfolding—its locale: the Livonia Family Y.

In just a few days, the Y will open a six court tennis facility, complete with pro shop, fireplace and all the amenities which make up indoor tennis—the Grand Slam Tennis Club.

Profits will be used to finance charitable programs for the community.

Bill Cameron, executive director of the Y, spearheaded the drive for the new tennis facility—the first of its kind for Y's throughout the country.

## PRE-WINTER SALE

GENUINE  
SAFETY HELMET

**\$12<sup>88</sup>**

Also flip up shades  
FROM \$4<sup>95</sup> UP



Sno (Mobile)  
King

- 200 Denier Caprolan\* 100% Oxford Nylon coated for water repellency
- Insulated with 6 oz. Polyester quilted to hi-count Nylon
- Knit collar front closed by two snaps, front patch pockets, aluminum front and leg zippers (21" on men's and women's 12" teen's), racing stripe down upper front, Nylon belt, exposed knit cuffs, attach snaps for optional hood



All Sizes in Stock  
Up To Extra Large  
Reg. \$42.95

SALE **\$24<sup>95</sup>**

SNOWMOBILE BOOTS

Values to \$14.95

Kids, Women's,  
Men's up to  
size 13

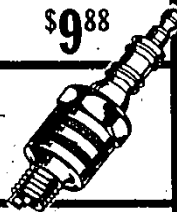
**NOW**  
**\$9<sup>88</sup>**



SPARK PLUGS

Reg. \$1.25

**NOW 88¢** ea.  
excludes racing plugs



LeMANS  
Snotbil  
Racing Oil

24 quarts to case  
Reg. \$23.95  
**SUPER SALE**  
WHILE 100 CASES LAST

**\$11<sup>88</sup>** per case

SNOWMOBILE  
MITTS

**\$3<sup>88</sup> to \$14<sup>88</sup>**

GOGGLES

**\$1<sup>88</sup>**  
from

GAS CANS  
6 1/2 Gal.

Reg. 5.95

**\$4<sup>49</sup>**  
**NOW**

G.I. GAS CAN

CAN

**\$6<sup>95</sup>**

HOLDER **\$2<sup>49</sup>**

SPOUT **\$1<sup>29</sup>**



Open Daily to 9, Sat. to 6, Sun. to 5

**ARCTIC CAT**  
**SNOWMOBILES**

**PIERRE'S OUTPOST**

DIV. OF  
SALEM  
LUMBER

30650 PLYMOUTH ROAD • LIVONIA • Ph. GA 2-1000