

Road Units Ask Larger Role

The newly elected chairman of the seven-county Inter-County Highway Commission (ICHC) has asked that a larger role in transportation planning be granted the agency.

Michael Berry, board chairman of the Wayne County Commission, said that under new amendments to the Federal Highway Act, transportation plans can be reviewed or developed by a designated transportation planning agency.

"I'm not suggesting that the Southeastern Michigan Council of Governments (SEMCOG) should be replaced, but perhaps the Inter-County Highway Commission can supplement or undertake development of a share of the trans-planning process," Berry said.

The objective of the ICHC is to prepare and keep current a plan for a system of inter-county highways, super highways, and limited access highways in the seven counties of Livingston, Macomb, Monroe, Oakland, St. Clair, Washtenaw and Wayne.

Berry added that real progress is being made on acceptance of the master right-of-way plan and that it had been approved by just six of the townships and villages in Wayne County.



DENIS T. NISSLE of Livonia has been named officer-in-charge of the Manufacturers Bank's Melvindale office. Prior to his new position, Nissle had been in charge of the Taylor office of the Manufacturers Bank since it opened in 1968.

Deer Hunters' Outlook Bright

There is every reason to believe that a good Nov. 15-30 firearm deer hunting season is in the offing for Michigan sportsmen, reports the Dept. of Natural Resources.

DNR survey findings indicate that the state's deer range is carrying more whitetail this fall than in any autumn of the last five years, says David A. Arnold, DNR deer specialist.

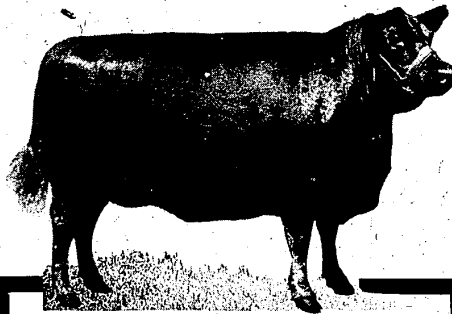
Arnold points to the mild 1972-73 winter and the abundance of readily accessible, nutritious food - particularly acorns - accompanying it as major reasons for an optimistic deer season outlook. He says last winter's ample

food and temperate weather helped result in good fawn carry-over from 1972 and in excellent spring fawn production this year.

Two other big factors working for Michigan white-tails, says Arnold, are various habitat improvement programs and burgeoning commercial lumbering operations, both beginning to make their mark in stabilizing the deer population.

With more deer in the woods this fall, he says, a hunter's chance of seeing one are much better than in recent years, even if he is not fortunate enough to bring one home with him.

"The sport of deer hunting is much more than shooting a deer," he believes. "Much of the thrill and excitement comes with just seeing them in their natural habitat."



REGAL MARKET (The Better Meat People)

SERVICE COUNTERS AT BOTH STORES TO INSURE YOUR PERSONAL SATISFACTION

PORK SALE

Best Quality From Young Lean Porks!

| WHOLE PORK LOINS | MEATY SPARE RIBS | LEAN PORK STEAK | CENTER CUT RIB PORK CHOPS |
|------------------|------------------|-----------------|---------------------------|
| 97¢ LB. | 79¢ LB. | 99¢ LB. | \$1.09 LB. |

| LOIN or RIB PORK ROAST | PORK BUTT ROAST | Meaty Chop Suey Pork |
|------------------------|-----------------|----------------------|
| 89¢ LB. | \$1.09 LB. | \$1.19 LB. |

STEAK SALE

| Lean RIB STEAK | Meaty T-BONE STEAK | Center Cut BONELESS ROUND STEAK | Meaty CLUB STEAK |
|----------------|--------------------|---------------------------------|------------------|
| \$1.09 LB. | \$1.49 LB. | \$1.39 LB. Cubed Free | \$1.29 LB. |

POULTRY SALE

| U.S. Govt. Inspected WHOLE FRYERS | Swifts Gold Crest or Autumn Gold TOM TURKEYS | Purina Heston Honeyuckle HEN TURKEYS |
|-----------------------------------|--|--|
| 39¢ LB. Cut Up Fryers 44¢ LB. | 16-24 lbs. Limit one with any \$7.50 meat purchase 55¢ LB. | 10-16 lbs. Limit one with any \$7.50 meat purchase 66¢ LB. |

DAIRY SPECIALS

| EDKIRCH All Meat BALONEY | Sealtast Large or Small Curd COTTAGE CHEESE | Sealtast HOMO MILK |
|--------------------------|---|--------------------|
| 59¢ 1/2 LB. Sliced | 44¢ LB. CTN. | \$1.15 gal. |

CHOICE BEEF FOR YOUR FREEZER

| FRONTS OF BEEF | LOINS OF BEEF | Expert Deer and all wild game processed only at 1615 Merriman |
|--|--|---|
| 73¢ LB. Average Weight 180 lb. ROASTS, STEAKS, STEWS and GROUND MEAT | Average Weight 80-100 lbs. SIRLOIN, T-BONE PORTERHOUSE and GROUND BEEF | |
| NO. YIELD 5 Cut, labeled and wrapped FREE | 79¢ LB. | |

Service Counters At Both Stores To Insure Your Satisfaction

MEAT FIT FOR A KING!

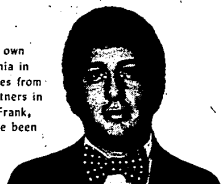
REGAL MARKETS

8220 MERRIMAN At Ann Arbor Trail (Farmer Jack Shopping Center) 421-1600
1615 MERRIMAN At Palmer (Next to Farmer Jack) 721-3167
OPEN DAILY 9 to 7 FRIDAY 9 to 8 SUNDAY 10 to 4
OPEN EVERY DAY 8 a.m. to 10 p.m.

IF YOU'RE THE BEST, JOIN THE REST OF THE BEST AT HARTFORD REALTY

FRANK D'ANGELO

Joined the Hartford Team six years ago. He opened his own Hartford Franchise on Plymouth and Farmington in Livonia in September 1972. In October 1973, Frank and two employees from his first office, Jim Becker and Ray Lavallee became partners in a Hartford Franchise on Greenfield in Southfield. Says Frank, "My earnings have increased substantially every year I've been with Hartford."



Frank and his wife Diane are the proud parents of 4 month old Frankie. The D'Angelo's love outdoor activities like waterskiing, tennis and golf. On occasion Diane will join Frank on the golf course "But only when he's in a good mood," says Diane.



If you're one of the best, like Frank... we want you. If you're really good... we want you as an owner someday. You see, Hartford strongly believes in a policy of promoting from within. That's why Hartford is Michigan's Fastest Growing Real Estate Firm. We just opened our 11th office and should, by conservative estimate, sell 1800 residential homes in 1973. To get the Top Pros, we pay the Top Dollar.

75% COMMISSION

That's why we pay the highest in the industry. AND if you're a lister be sure to ask about Hartford's Special Earnings Plan. Quite frankly, if you're looking for the best opportunity in the Real Estate field, there's only one way to go... the Hartford Way.

For more information... call Richard Cutright 537-6808 or Jim Courtney 522-7252

WE WANT YOU ... if you're good

HERE ARE SOME OF THE MEMBERS OF HARTFORD'S MILLION DOLLAR SALES CLUB.



All of the above have earned between \$20,000 and \$50,000



THIS IS A

Welcome Wagon

TOWN!

Let us welcome you.

WAYNE COUNTY OFFICE 424-0100 LIVONIA, PLYMOUTH NORTVILLE, REDFORD GARDEN CITY AND WESTLAND

OAKLAND COUNTY Office 842-0130 FARMINGTON AND SOUTHFIELD



The Most Famous Market in the World