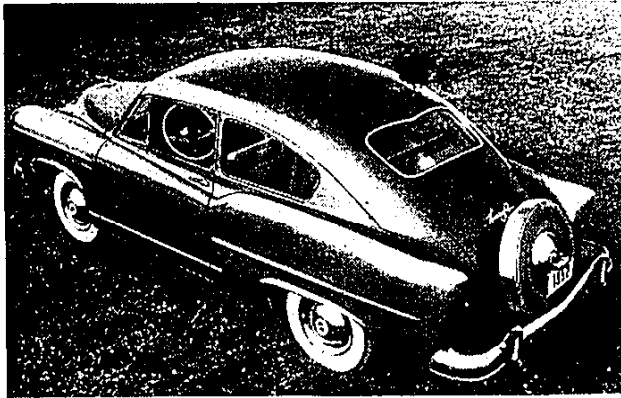
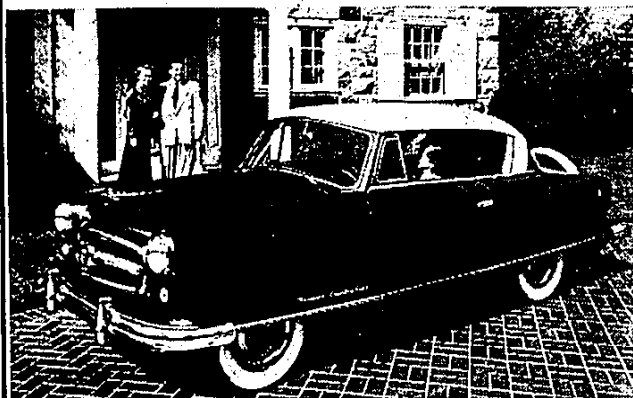


They don't make 'em like they used to.



They don't price 'em like they used to, either.

Remember the '53 Kaiser . . . the '51 Studebaker . . .
how about the '53 Nash Rambler . . . or the 1952 Henry J?
And remember their price tags? You could buy a lot of
car back then for \$2,500.

Today a \$2,500 price tag is as rare as a Packard
Clipper. That's why we offer MemberLoan car financing at
AAA—to help you pay for your new '74.

And MemberLoan finance rates can help you save a few
bucks—up to \$100 on the average new car loan
(compared to what most banks charge).

You've insured your cars at AAA for years.
Why not start financing them here, too?



We want to do more for you...with MemberLoan car financing

MemberLoan is available to Auto Club members through an arrangement with two of Michigan's leading banks.

P.O. BOX
Drugs

Nursing Baby Hurt By Nicotine

Q: If a mother is addicted to drugs, can her baby become addicted if the mother nurses the baby?

A: No, but there are some interesting points that your question raises.

First, no narcotics show up in the mother's milk of even addicts. Barbiturates (the active ingredient in most prescription sleeping pills) do show up in mother's milk, but not in amounts large enough to adversely affect the baby. Large amounts of alcohol ingested by a mother will show up in small and insignificant amounts.

What is rather surprising, though, is that nicotine does appear in the milk of smoking mothers. Moreover, smoking tends to suppress the production of this milk. Moreover, children born to smoking mothers tend to be punier than average, and you have something to think about.

Q: I need to get it together and I'm really scared. I heard on the radio that there's a Crisis Center I can go to. Where is it? A.H., Westland.

A: It can really be frightening not knowing where to turn when you need help and someone to talk with. The Westland Aide Crisis Center, 8068 N. Wayne Rd., is open seven days a week. Monday through Friday from 9 a.m. to 10 p.m., Saturday from 9 a.m. to 9 p.m. and Sunday from 7 p.m. to 11 p.m. There's always someone there who wants to help.

For any questions you want answered, call the Livonia or Westland Aide Crisis Centers or write to Community Commission on Drug Abuse - 12555 Middle Belt, Livonia, 48150.

**observer
newspapers**

Advertising Standards

Advertising published in the Observer Newspapers is accepted on the premise that the merchandise and services offered are properly described and willingly sold to customers at the advertised price. Advertisers are aware of these conditions.

Advertising that does not conform to these standards, or that is deceptive or misleading, is never knowingly accepted.

If any Observer reader encounters non-compliance with these standards, we ask that you inform the Advertising Department of this newspaper, and also call the

**BETTER BUSINESS BUREAU
962-6785**

*Published in the interest of
truthful advertising by*

The Observer Newspapers