



ERA BRACELETS, to be worn in support of an Equal Rights Amendment to the U.S. Constitution, are on sale now by members of the League of Women Voters. Southfield-Lathrup representatives Evelyn Billesdon (left) and Shirley Wall are two of the bracelet saleswomen in Observerland. (Evert photo)

LWV Selling Bracelets

By LORRAINE MCCLISH

A new bracelet seen around Observerland these days is marked ERA and is meant to be worn until the Equal Rights Amendment, the 27th Amendment to the U.S. Constitution becomes law.

The bracelet is on sale now by the Southfield - Lathrup and Farmington - West Bloomfield Leagues of Women Voters (LWV) for \$3.

"We make a profit on this," said Mrs. Thomas Wall, president of the Southfield - Lathrup chapter. "The proceeds will go into the league's special ERA budget to provide materials and assistance, public education, lobbying, court suit fights or whatever in nonratified states."

Michigan is one of 30 states that have ratified the amendment, but eight more are needed before it will become a federal law.

However, the bracelet is also worn as a consciousness raiser and as a means of showing support for ratification.

Being in the business of selling anything is new for the LWV. Local chapters all are supported through a finance campaign conducted every spring through local businesses.

And the LWV did not have too much to do with the passage of the amendment in Michigan.

"We took up the campaign because of our (long-standing) stand on equality of opportunity," said Mrs. Wall.

"I think we were all caught by surprise when we learned that it (the amendment) was running into stumbling blocks. The whole business is indigenous with our organization, though, so when we

found out we were going to have to work to have this become law, we quickly supported it," Mrs. Wall said.

Along with each bracelet, purchasers receive a pamphlet entitled "The ERA: What it Means To Men and Women" is concise and easy to read.

It covers what the ERA will do; why it's needed; why it will not interfere with individual privacy; its effects on discriminatory labor laws; its effect on states' rights; and its effect on women's rights in marriage and divorce.

"The main need is still for proper understanding without emotional debating," said Mrs. Alex Billesdon, who handles public relations for the Southfield - Lathrup group.

"We still have to reach those who have not been touched by the problem."

The general principle of the league is that if a law restricts rights, it will no longer be valid; if it protects rights, it will be extended to men.

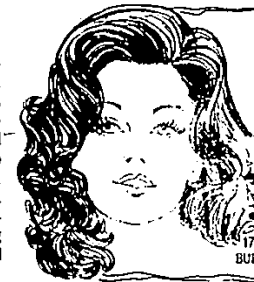
The bracelets, the women warn, are made of nickel silver so they won't take a lot of bending.

Orders will be taken by Mrs. Wall, at 29858 Fall River, Southfield; Mrs. Billesdon, 13860 San Jose, Lathrup, or Mrs. Helen Prutow, 31741 W. 13 Mile Rd., Farmington.

Mail orders will be filled by mailing a check for \$3.25, made payable to the Southfield - Lathrup League of Women Voters, PO Box 215, Lathrup Village, 48075, or the Farmington-West Bloomfield League, mailed to Mrs. Prutow.

Training

Girl scout leaders come from every educational, racial and economic group, but they all have one thing in common - they enjoy sharing their knowledge and skills to help girls grow. No matter what the background, each leader and assistant leader has something to contribute because girl scouting gives them the training and help they need.



Beauty for the HOLIDAYS at JANARD'S

NOW OPEN MONDAYS - WED., THURS., FRI., (Last Appt. 7:30) TUES., SAT. (Last Appt. 4:30)

Janard's Hairstyles 422-9883
17150 FARMINGTON RD., BURTON HOLLOW PLAZA

Christmas Sale OVER 200 STYLES TO CHOOSE FROM

DECEMBER SALE

25% OFF

ON FRAMED MIRRORS
ENTIRE MONTH OF DECEMBER

U.S. Glass
"If it's Glass... We Have It!"

588 S. Woodward, Bet. Lincoln & Maple MI 4-4188

• Pattern Glass • Auto Glass • Furniture Tape
• Thermopane • Antique Mirrors • Patio Doors
Daily from 9 a.m. 'til 6:30 p.m. Sat. 'til 2 p.m.

BUSINESS EXPANSION SALE

AT RADOM'S MEN'S CLOTHIERS
Gigantic Money Savings!

Plan to attend this sale... You'll be thrilled with your purchases.

UP TO 60% OFF
SUITS • SPORTS COATS • OVERCOATS
• SUBURBAN COATS
ALL PANTS

50% OFF
LARGE SELECTION OF CAJETS & PORTLYS
ALTERATIONS FREE!

1/3 OFF • SHIRTS • TIES • BELTS
FORMAL ACCESSORIES

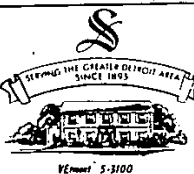
This Week's Special

ALL WOOL SINGLE BREASTED SPORTCOATS \$10.00
DOUBLE BREASTED \$15.00

Radom TAILORS & CLOTHIERS

22141 Coolidge, Oak Park (Just S. of 9 Mile)

NEW STORE HOURS
MON. & THURS. 10 a.m. - 9 p.m.
TUES., WED., FRI., SAT. 10 a.m. - 7 p.m.
SUN. 11-3 398-9188



WE REGARD OURSELVES AS A TEAM...

cooperating with each other to give the families who turn to us all the help they need.

SCHMALZRIEDT SONS
Funeral Home
16625 GRAND RIVER
BETWEEN GREENFIELD and SOUTHWICK
DARLYNE SCHMALZRIEDT LUCE, MGR.

TURKEYS

YOUNG-FRESH TENDER

The Best Money Can Buy

- NEVER DRY WHITE MEAT
- PAY SLIGHTLY MORE BUT BE ASSURED OF A TOP QUALITY TURKEY FOR THAT PERFECT MEAL

WHY ARE OUR TURKEYS THE BEST?

1. THEY'RE CORN FED
2. NO ARTIFICIAL INJECTION
3. NO ARTIFICIAL FLAVORING
4. ALL OUR TURKEYS ARE YOUNG

HENS 14-20 \$1.09 lb. **TOMS 25-30 lbs. \$1.07 lb.**

(Last Orders Taken Dec. 22)

ROPERTI'S TURKEY FARM
34700 5 MILE RD. (1/4 MILE W. OF FARMINGTON RD.) LIVONIA
421-6546