

Expert teaches how to 'get head together'

By JACKIE KLEIN

Did you know your brain weighs from 40 to 48 ounces, has 100 billion cells and 25 watts of electricity? Did you know if your brain were a computer, it would be a \$1 billion operation?

Now the bad news. Scientists claim we use only five to 10 percent of our brain potential and we're "mental cripples."

If you don't believe it, just ask Peter Corra who teaches Silva Mind Control. The discovery of the new science of psychokinesis by Jose Silva has led to the creation of the Silva method.

If you're feeling like a lame brain, don't despair. Corra guarantees you can learn to use 25 percent of your mind potential and solve your problems via the mind control method.

Corra came to Southfield last week to give a "Do Something Different" class a peek at how one can increase mental output and program for greater achievement. Those who want more than a peek can enroll in any number of courses.

RESEARCH in brain wave control began in Laredo, Tex. in 1944. From a science, it became an art and there are now more than 50,000 Silva Mind Control graduates.

To start with basics, what's psychokinesis? "It's a scientific term for getting your head together," Corra explained.

Now comes the complicated part. In

the scale of brain evolution, if you're in the Beta range, you're in the physical world at outer conscious levels.

In the Alpha range, you're in the spiritual world at inner conscious levels. Theta is sleep or inner for painless surgery, dentistry and childbirth and Delta is unconscious.

"We had twins by using mind control," Corra testified. "My wife sailed through completely natural childbirth and we had the biggest twins in Kalamazoo. They weighed eight pounds, six ounces and eight pounds, 10 ounces."

That brought titters and gasps from the audience. But since none were expecting a multiple-birth, the obvious question was, "What can this mind control business do for me?"

"The mind is a veritable kind of resources with which we're out of touch," Corra replied. "Creativity comes from the inner conscious level, the spiritual Alpha world of no time and space."

"Successful businessmen make 90 percent of their decisions by intuition. They can't explain it. They just say 'I slept on it.'"

"Thomas Edison drifted into day dreams and consulted a board of directors in his mind. About 80 percent of his theories came from dreams."

CORRA THEN talked about the "letter-dirty word" ESP. "Extra is h.s. beta stuff. ESP is usually associated with the occult and the way out. To us, it means Effective Sensory Projection and it's simply becoming aware of what's already going on."

"ESP is used to gather information to solve problems. It isn't a parlor game. Problems are the difference between where you are and where you want to be. Your alarm system is out of balance and there's a barrier between you and your goal."

Corra said self-imposed limitations are barriers to success and quoted Einstein as philosophizing: "Every man and woman sits in a prison of his own ideas."

Man has the power to move in the direction of his choice and is responsible for his own limitations, Corra maintained.

"That's the heart of programming. Literally it's 'garbage in and garbage out.' The garbage goes out when self-awareness and control come in."

"Advertisers are trying to program you at a subconscious level with negative attitudes that cause psychosomatic illnesses."

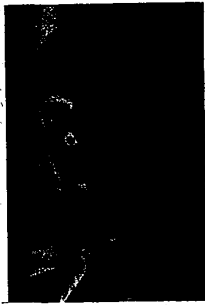
"By functioning at the Alpha dimension (lower brain frequency) you can be programmed to do mental house-keeping, control your emotions; make better decisions, increase awareness, and solve problems."

TO BREAK bad habits like over-eating and smoking, Corra said, "deeper levels of the mind will short circuit the needs and eliminate the habits."

If you think your brain is still functioning at a maximum of 10 percent, remember this is a peek into mind control.

Corra assures that the method functions in every day experience, but not through a lecture program.

"Esses speak louder than words," he advised. "First you have to over-



PETER CORRA

come resistance and then there's no limit to how far you can go. Mind control is using a greater dimension to solve problems."

Kawasaki '74 is here!

New 1974 Kawasaki motorcycle now on display. See our full line and let the good times roll.



KAWASAKI

LETS THE GOOD TIMES ROLL

RUTTMAN

24732 FORD RD.
DEARBORN HTS.

278-5093

Psychic explores the mystery of obtaining peace of mind

By JACKIE KLEIN

When 19-year-old Curt Sorge lectured, he's billed as "an exceptionally gifted young psychic, psychometrist and psychic reader."

Sorge prefers to be called a "psychic spiritual sensitive" and doesn't believe he is "exceptionally gifted."

A "sensitive," says the young Southfield man, is one who realizes he is capable of going beyond the physical to re-examine his spiritual self.

"Everyone has extra senses of the mind to complement the five physical senses one needs for survival, sustenance, and shelter," Sorge said.

"Telepathy, clairvoyance, and pre-cognition manifest themselves in many ways. Telepathy is the easiest to define. It is transference of thoughts or speech without physical contact."

ON MAY 1, Sorge will lecture on Karma and reincarnation at the Bandman Restaurant in Southfield for "Do Something Different," a six-week course on psychic phenomena.

In March, Sorge dealt with extra sensory perception and reincarnation

for the program. He holds classes in his home at 21675 Rougewood.

"I really got into ESP when I was 11," he recalls. "An astrological charting of my life indicated I had psychic leanings from birth."

"I was extremely introverted and quiet as a kid and intensely inquisitive. My family encouraged individual thought. Little was known about the science of parapsychology but I read every book I could find and did a lot of research."

"By the time I was 16, I found it easier to communicate. I really led two lives. I was a typical high school student and I never discussed my calling. I wasn't ready for criticism, leading questions or ridicule."

SLIGHTLY built, Sorge has an esthetic face and an air of serenity. His eyes appear to be penetrating but kindly, not judgmental. He is serious and intense beyond his years and says he is "deeply Christian."

He spent six months at Duns Scotus College in Southfield, seriously considering entering the priesthood. He then discovered it wasn't for him.

He took courses in para-psychology and Eastern religion, attended California State University for two years and hopes to continue his education in the field of communications.

The group with whom he shares his beliefs (he prefers not to use the word 'teach') range in age from 13 to 75.

"Some come to these gatherings in my home because they want to find a way to relax," he explains. "They don't necessarily want to develop extra senses and some can't."

"IT STILL works even if they're not conscious of the fact that they're learning to live fuller lives with the emphasis on spiritual reality through meditation."

Sorge holds a fellowship with the Universal Church in Seattle, Wash. He has taught classic meditation, concentration, contemplation and adoration.

There is a basic value to forecasting the future, Sorge maintains.

"Man is master of his own destiny. God doesn't sit on a pedestal, dealing out fate. We're given a free will. Looking into the future is like looking

at a piano with all white keys. The probabilities are infinite."

"Our birthright is to make these probabilities pop up out of the keyboard as possibilities. Forecasting fills in the body of the basic outline."

"If we don't like the fill, we have the free will to change the title, grow and learn. There is no such thing as evil or bad luck."

Sorge also believes in reincarnation with man coming back into the essence of man. He contends the soul exists before birth and man leads successive lives.

"MAN CANNOT become perfect enough to be united with God in one lifetime. He has a chance to come back with the emphasis on understanding, love and compassion for the human condition."

Karma is the doctrine of cause and effect, Sorge explains. "What you do in one lifetime determines what one must work on in the next to achieve greater spiritual being."

Sorge stresses that his theories "can't be covered in one sitting and he isn't out to convert."

"Psychics can be illiterate or well educated," he says. "New theories have evolved from old beliefs and are becoming westernized."

"MEDITATION helps one become aware and tolerant of others. Telepathy improves communication. Reincarnation is the original doctrine that the soul is not created at birth and thus has no beginning or end."

Sorge insists he detests any form of fanatic conservatism and he is not ritually imbued with one subject.

"I enjoy a darn good football game and I love to fish," he says. "I happen to be sensitive and aware, but I have to account for me. If I get deep into you, you have to search on your own. Once the seeds are planted, I'm happy if you just ask questions."

Sorge admits he finds it difficult to accept close mindedness.

"Criticism is a two-edged sword against the bearer-ignorance and fear, of the unknown."

Being a "psychic sensitive" can be a burden, he sighs. "It sure hasn't helped my love life."

Students return from concert

David Ramaker and Geoffrey Keny, two 1973 graduates of North Farmington High School, recently returned from a tour of five European countries with Michigan State University's "Singing Statesman."

The "Singing Statesman" is a men's glee club at MSU. They performed in Belgium, Luxembourg, Germany, Paris and Amsterdam. The glee club members began planning for the tour a year ago and raised their own funds.



WARREN T. BURT, JR.

Burt promoted

Warren T. Burt, Jr., of Farmington Hills, has been promoted to vice president, campaigns, for the United Foundation of Michigan. John E. Hall of Birmingham was named to the post of vice president, operations. Burt, who joined UF 18 years ago, assumes Hall's former position, heading the professional fund-raising staff.

LUSSEWEND'S LOTZ PLUMBER

GOOONES ME! NOW PA IS RAVING!! NO HOT WATER THERE FOR SHAVING

GET A HOT WATER HEATER NOW!

ROBERT L. Lussewend
PLUMBING & HEATING
Phone MA 5-1808
50740 W. 12 MILE RD.
FARMINGTON HILLS

Performance proven after 2 years of owner use...

SELF-PROPELLED SOLID STATE LAWN-BOY®



It almost never needs a tune-up!
21" Model 8232

Solid State Ignition has no moving parts. No condenser, no points to replace. Timing is permanently fixed. Enclosed, safety-guarded all-gear drive applies power to the rear wheels.

Patented rear safety shield. Patented safety contour and deflector bar. 1-year warranty.

OPEN ALL DAY SAT.
Full Service & Parts

BROQUET FORD

TRACTORS & EQUIPMENT

34000 W. 8 MILE FARMINGTON
476-3500
MON-FRI 9 a.m. - 5:30 p.m.
SAT. 9 a.m. - NOON

Great Entertainers:

JOHNNY MATHIS

LAUDER'S SCOTCH 86 Proof

Lauder's is keeping company with some big names these days. It's the good honest Scotch at a good honest Scotch dollar price. You can buy Lauder's for a song.

\$5.26 415 GL.
\$12.78 1 1/2 GAL.
ALL TAXES INCLUDED

Johnny Mathis at the Farmington Hotel, Ballroom 1-14

BUSINESS or PERSONAL CHECKING

FREE when a monthly balance of \$1.50 monthly charge if balance goes below \$299

All Checking Account customers at Metro, both Business and Personal, enjoy the most economical plan around. All checking accounts, maintaining a monthly balance of \$299, pay nothing for checking. If your balance drops below \$299, you pay only \$1.50. No more! Switch to Metro and save!

METRO'S DOWNTOWN FARMINGTON OFFICE

Open till 8:30 p.m.
MONDAY THROUGH FRIDAY.

METROPOLITAN BANK farmington

FARMINGTON OFFICES: 33200 Grand River (near Farmington Road) & 34715 Grand River (World Wide Shopping Center)
QUAKERTOWN OFFICE: 27500 Farmington Road (near 12 Mile Rd.) BELLEVILLE: 27719 Grand River (near Beach Day)