

*On his garden path this sparrow
Scatters pebbles . . .
Man forgotten*

Things to remember

(Continued from Page 36)

pending on drainage and soil type) and then proceed.

"THINGS-TO-KEEP-IN-MIND"

GERMINATION SPEED-UP:

When sowing bluegrass mixtures, try pre-soaking the seed for 24 to 48 hours (but not more than 72). Bag it in cheesecloth, let it soak in pail of warm water—softened is O.K.—for 12 hours; change water 2 or 3 times or until all the brown trace is gone.

Spread out on flat surface thinly to dry rapidly in airy (no wind), sunny spot. When dry, sow as recommended. Results? You'll have sprouting in 1/3rd less regular time, 1/3rd less watering, and 1/3rd less dogs, cats and sundry other seed-disturbers.

MULCHES: At time of application of sawdust, wood or bark chips, apply evenly two pounds of ammonium sulfate or one pound of ammonium nitrate or 12 ounces of urea or three and one-half pounds of a 10 percent nitrogen fertilizer (10-6-4, 10-5-5 or the like) per square yard of mulch that is three to four inches thick.

This will help to avoid a nitrogen shortage. Soil bacteria need this element to convert wood into humus and if you don't supply it, they'll "rob" the soil at the expense of the plant.

Apply at least three times during the growing season, especially if mulch is renewed or added to.

BLOSSOM-END ROT: Dark, sunken area at bottom end of tomato. When preparing soil, work in ample supply of organic matter and use five to ten pounds of dolomitic limestone for each 100 square feet, if a soil test calls for it.

If pH is where it should be and calcium is called for, use about 5 to 7 pounds of Gypsum. This needed calcium will help prevent rot. Maintain an even moisture supply by providing a two to four inch thick mulch around plants.

PLANT PROTECTORS: Use plastic milk jugs with bottom cut off to protect young vegetable and annual plants at night that are set out early.

There's no need to be
old fashioned
when you
can have
**CENTRAL
AIR
CONDITIONING**
by
LENNOX®



There was once a time when you had to rely on a hand-held fan and lots of lemonade to get you through a long, hot summer. Not any more. Now there's **LENNOX** central air conditioning. Have it installed now before hot weather.

**DO YOURSELF A FAVOR—Get our price on a
NEW FURNACE or AIR CONDITIONER
BEFORE YOU BUY!**

ACCREDITED HEATING
& COOLING CO. IS AN
AUTHORIZED DEALER FOR
LENNOX



MICHIGAN CONSOLIDATED
GAS CO.

Participating contractor
FULL SERVICE ON ALL MAKES
OF FURNACES

**ACCREDITED
Heating & Cooling Co.**

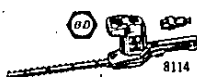
24521 WEST McNICHOLS, Main Office

537-8111

NIGHT SERVICE CALL MAIN OFFICE - 537-8111

E.I.L.A. BANK TERMS

FREE ESTIMATES



**NEW 13" DOUBLE EDGE
SHRUB & HEDGE
TRIMMER**

Sturdy, integral, up-front grip
and rear handle give bal-
anced control. Double
insulated.

17⁹⁹



**13" SINGLE EDGE
SHRUB & HEDGE
TRIMMER**

Blade cuts 3,600 strokes per
minute. Wrap-around handle.
Aluminum housing.

13⁹⁹



**NEW CORDLESS
SHRUB & HEDGE
TRIMMER**

Lightweight. Double-edge
blade gives maneuverability.
Includes batteries and charger.

19⁹⁹



A. LONG HANDLED, ROUND POINT SHOVEL
B. HOMEOWNER GARDEN HOE
C. UTILITY BOW RAKE
D. TEFLON-COATED GRASS SHEAR
E. 7" VINYL GRIP PRUNER

233
EACH

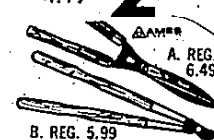


**22 TINE
LEAF RAKE**

Spring brace. Oil-tempered tines.

REG. 4.19

288



B. REG. 5.99

**TEFLON COATED
LOPPING or
HEDGE SHEAR**

Both tools have moisture-
resistant blades and smooth,
contoured handles.

**YOUR
choice 488**
EA.



**LAWN GROOM
RAKE**

Removes grass-
killing thatch.

REG. 5.49

397



HWI
Mr. Friendly

HWI
The Friendly Ones

GENERAL HARDWARE

3278 Rochester Rd., Troy

Between 16 & 17 Mile Rds.

689-0590

WALNUT LAKE HARDWARE

2104 Walnut Lake Rd., W. Bloomfield

Corner of Walnut Lake & Inkster Rd.

626-2282

YOUR HEADQUARTERS FOR ALL

Black & Decker
ELECTRIC LAWN CARE TOOLS

AND AMES®
SINCE 1774
EQUIPMENT



**ELECTRIC
GRASS SHEAR**

Precision blades. Includes
batteries and charger.

14⁹⁹

"MULTI-VATOR"
New, Versatile
Multi-Purpose Tool

32⁹⁹

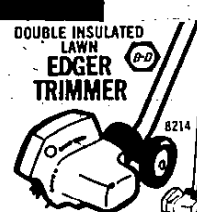
Double-insulated tool cultivates, edges, sands wood, brushes metal
and scrapes paint. Includes multi-vator, universal cord adapter, tem-
pered steel garden claw, wire brush, scraper, spade edger, sander,
abrasive paper, wrench.



**CONVERTIBLE
Cordless
GRASS SHEAR**

Detaches from handle to use as hand
trimmer. Includes batteries and
charger.

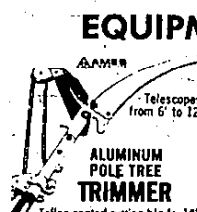
24⁹⁹



**DOUBLE INSULATED
LAWN
EDGER
TRIMMER**

6 1/2" ribbed blade and blade guard.
Big 4" rear wheels.

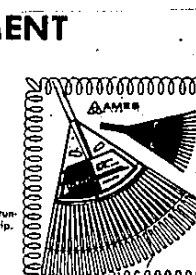
29⁹⁹



**ALUMINUM
POLE TREE
TRIMMER**

Telescopes
from 6' to 12'
Teflon-coated cutting blade, 15" prun-
ing saw limb hook and wooden grip.

Reg. 19.95



COUPON
15 TINE - **FREE**
SHRUB RAKE
WITH COUPON & PURCHASE OF
GREENSWEEPER

Tough, springy poly lawn
rake. Non-rust shrub rake.
5.98 TOTAL
VALUE **399**