

# Principal slams door on entire track team

## GC East season ends in forfeits

By TOM DONOGHUE

Garden City East's 1974 track campaign has come to a shameful halt.

An alleged break-in and theft of football jerseys and footballs at the Garden City High School by the entire East track squad has ended the track season on a sour note.

East Principal Gerald C. Gould served as main spokesman for the incident which has made the Panther track squad forfeit dual meets with Franklin, Oak Park and John Glenn, relays in the Observerland meet and Belleville Relays, and the Northwest Suburban meet and regionals.

"As close as we can pin this ordeal down, the stealing has been a two to three week thing following the Easter break," commented Gould.

The theft took place in the East field house where all equipment is locked in separate cages.

"A total of 42 football jerseys and three game footballs were stolen," added the East principal, who emphasized that all signs point to this being a planned theft and "not a whimsical thing."

Four persons have admitted stealing the equipment but Gould said that it didn't end there.

"Possibly four of the 30-man track team didn't know of this theft," taking place," added Gould. "The kids finally admitted that they all knew of it and I guess the old saying of not wanting to squeal on your buddy was evident here."

"We had been aware of gear missing from the cage but we couldn't pin the theft down."

"Then last week, football Coach Gary Humphrey saw one of next year's brand new football jerseys on a student walking down the hallway during school. Humphrey approached the girl wearing it and the investigation was on."

"Apparently the kids stole the equipment and handed it out like peanuts."

"Our next step was to call a meeting with the track team and I really have to believe that the team didn't understand what they had actually done."

"I just don't know, most teams are proud but proud teams don't steal."

After talking to the team and leaving the team to discuss the matter with Coach Mike Riley, it was admitted that the entire team knew of the theft and they wanted to know what action I would be taking before names were given.

"I quickly informed the track team that this was no bargaining session."

## The Observer & Eccentric

# SPORTS

1B-2 (F)

MAY 9, 1974

"The team decided to stay together as a team and go down together as a team so I had no alternative but to close down the track season."

"Coach Riley agreed with the philosophy but not with the decision of the entire team having to pay the price."

"I couldn't pin down every individual for a specific thing so instead of nailing a few to the wall

and letting some get away with the crime, I had to handle it this way."

"I also knew the student body would buy it this way. I couldn't zing four for something, the rest could have been part of it."

Gould said that 16 jerseys have been returned to date.

Coach Riley, who had no comment when this incident finally broke into the open, eventually commented on the issue that has completely shaken him.

## Churchill tops track relays

By TOM DONOGHUE

One would have to surmise that Fred Price's smile couldn't be any brighter these days.

The Churchill Charger track coach who was selected Coach of the Year in the '73 campaign, has his Panthers off and running for an instant replay of the "Year of the Charger."

It was his Charger squad that wound up in a tie with Stevenson for top honors last year in the Observer Relays.

This time around the Charger cindermen made no mistake about it and came up with the highest point total ever recorded by a team in the now four year old newspaper sponsored relay meet.

Price's crew won the 18 school relay with 30 1/2 points with city rival and defending co-champion Stevenson winding up in second with 25 1/2.

Then it was host Redford Union with 22, Bentley with 18 and Northville in fifth at 14.

A crowd of over 1500 attended the day-long meet and witnessed the breaking of four meet records with the Bulldogs of Bentley snapping old marks in both the 440 and 880 relays.

Churchill, which exceeded the previous relay high by four points, put together three firsts, three seconds, one third and one fifth to score in eight of the 12 events.

The Charger foursome of Craig Gully, Phil LaFave, Bob Mendoza and Ken Landini won the sprint medley relay in 2:30.4; Rick Powers, Paul Schulz and Mike Fisher won the pole vault relay with a total of 35 feet and the quartet of Mike Edmons, Mendoza, Gully and Landini tied for first in the mile relay in 3:30.6.

Churchill's seconds came in the high jump, four-mile and long jump relays. The third was in the shot put and the fifth in the 880 relay.

Second place Stevenson captured just one first and that in the four mile relay where Steve Galindo, Chuck Minear, Steve Brown and Steve White clocked in at 18:20.1 for a meet record, bettering Churchill's '72 clocking of 18:37.1.

Bentley, which finished fourth in team standings, came up with an outstanding display of leg power in winning the two mile, 440 and 880 relays.

It was the identical crew of Bill Brown, Rick Hamill, Darrell Ditzhay and Brian Murphy that won the 440 and 880 relays in both record-setting times. The 440 was clocked in at 44.2 and the 880 in 1:32.0.

The Bulldog foursome of Dan Reum, Kevin Farr, Steve Kovach and Steve Spreitzer won the two mile in 8:14.3.

Host RU which enjoyed the lead throughout the meet up to the

"He knew of thefts in the field house but not once did it occur to me that my boys were in on it."

"I can't express how much this whole thing hurts me. Needless to say, it is quite disheartening."

"But I must say that my opinion is quite different on the way the administration handled it. I agree with the philosophy but not the decision and the way it is being carried out."

"I expect more feedback."

"East has had a bad track program the past decade and I cleaned out last year and things were really starting to pick up this season. Sure, we were winless in seven dual meets but not once did one kid even think of quitting the team."

"Now I don't know what to expect. The entire program will be set back and naturally kids will hesitate coming out for the team."

"I have done a lot of soul-searching since this has taken place."

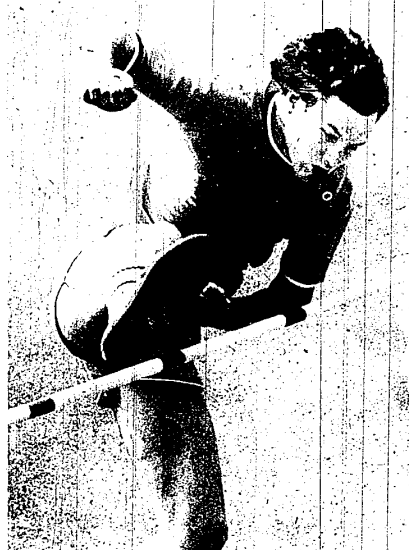
"But I just can't agree with our administration's way of handling the situation. In reality the kids who committed a crime are not being punished and those that didn't are."

Coach Riley is not the only one upset with the administration's way of handling the affair.

"I disagree," stated East Athletic Director Len Barlo. "I feel that this judgment of character was too swift a decision to be made in a matter of hours considering the involvement of 30 athletes."

"Sure I feel bad about this. What if this is the wrong decision? I don't agree to blanketing things."

Thus ends Garden City East's track season with 30 boys paying the price—a price that may not be fully comprehended for some time.



Bob Reed—North Farmington high jumper

## Observerland Relay

**TEAM RESULTS:** 1—Churchill (30 1/2); 2—Stevenson (25 1/2); 3—Redford Union (23); 4—Bentley (18); 5—Northville (14); 6—Franklin (12); 7—North Farmington (11 1/2); 8—Southfield Lathrup (10 1/2); 9—Plymouth Salem (9 1/2); 10—Bishop Borgess (9); 11—Thurston (8); 12—Farmington (5); 13—Garden City West (3); 14—Farmington Harrison (2); 15—Northville Canton (0).

**SHOT PUT RELAY:** 1—Bishop Borgess (Kzezmik, Briner, Jaramski), 140.9; 2—Franklin (140.4); 3—Churchill (139.3); 4—RU (137.4); 5—N. Farmington (137.4).

**HIGH JUMP RELAY:** 1—Redford Union (O'Grady, Helzer, School), 18'; 2—Churchill (17'); 3—Stevenson, 17'; 4—Plymouth Salem, 16'; 5—Bentley, 16'.

**LONG JUMP RELAY:** 1—Redford Union (O'Grady, Broeze, Helzer), 323'; 2—Churchill, 313'; 3—Stevenson, 311'; 4—N. Farmington, 305'; 5—Bentley, 305'; 6—Thurston, 112'; 7—Churchill, 112'; 8—Stevenson, 111'; 9—Franklin, 110'; 10—Plymouth Salem, 109'; 11—Bentley, 108'; 12—Churchill, 107'; 13—Stevenson, 106'; 14—N. Farmington, 105'; 15—Bentley, 104'; 16—Thurston, 103'; 17—Churchill, 102'; 18—Stevenson, 101'; 19—Franklin, 100'; 20—Plymouth Salem, 99'; 21—Bentley, 98'; 22—Thurston, 97'; 23—Churchill, 96'; 24—Stevenson, 95'; 25—Franklin, 94'; 26—Plymouth Salem, 93'; 27—Bentley, 92'; 28—Thurston, 91'; 29—Churchill, 90'; 30—Stevenson, 89'; 31—Franklin, 88'; 32—Plymouth Salem, 87'; 33—Bentley, 86'; 34—Thurston, 85'; 35—Churchill, 84'; 36—Stevenson, 83'; 37—Franklin, 82'; 38—Plymouth Salem, 81'; 39—Bentley, 80'; 40—Thurston, 79'; 41—Churchill, 78'; 42—Stevenson, 77'; 43—Franklin, 76'; 44—Plymouth Salem, 75'; 45—Bentley, 74'; 46—Thurston, 73'; 47—Churchill, 72'; 48—Stevenson, 71'; 49—Franklin, 70'; 50—Plymouth Salem, 69'; 51—Bentley, 68'; 52—Thurston, 67'; 53—Churchill, 66'; 54—Stevenson, 65'; 55—Franklin, 64'; 56—Plymouth Salem, 63'; 57—Bentley, 62'; 58—Thurston, 61'; 59—Churchill, 60'; 60—Stevenson, 59'; 61—Franklin, 58'; 62—Plymouth Salem, 57'; 63—Bentley, 56'; 64—Thurston, 55'; 65—Churchill, 54'; 66—Stevenson, 53'; 67—Franklin, 52'; 68—Plymouth Salem, 51'; 69—Bentley, 50'; 70—Thurston, 49'; 71—Churchill, 48'; 72—Stevenson, 47'; 73—Franklin, 46'; 74—Plymouth Salem, 45'; 75—Bentley, 44'; 76—Thurston, 43'; 77—Churchill, 42'; 78—Stevenson, 41'; 79—Franklin, 40'; 80—Plymouth Salem, 39'; 81—Bentley, 38'; 82—Thurston, 37'; 83—Churchill, 36'; 84—Stevenson, 35'; 85—Franklin, 34'; 86—Plymouth Salem, 33'; 87—Bentley, 32'; 88—Thurston, 31'; 89—Churchill, 30'; 90—Stevenson, 29'; 91—Franklin, 28'; 92—Plymouth Salem, 27'; 93—Bentley, 26'; 94—Thurston, 25'; 95—Churchill, 24'; 96—Stevenson, 23'; 97—Franklin, 22'; 98—Plymouth Salem, 21'; 99—Bentley, 20'; 100—Thurston, 19'; 101—Churchill, 18'; 102—Stevenson, 17'; 103—Franklin, 16'; 104—Plymouth Salem, 15'; 105—Bentley, 14'; 106—Thurston, 13'; 107—Churchill, 12'; 108—Stevenson, 11'; 109—Franklin, 10'; 110—Plymouth Salem, 9'; 111—Bentley, 8'; 112—Thurston, 7'; 113—Churchill, 6'; 114—Stevenson, 5'; 115—Franklin, 4'; 116—Plymouth Salem, 3'; 117—Bentley, 2'; 118—Thurston, 1'; 119—Churchill, 0'; 120—Stevenson, 0'; 121—Franklin, 0'; 122—Plymouth Salem, 0'; 123—Bentley, 0'; 124—Thurston, 0'; 125—Churchill, 0'; 126—Stevenson, 0'; 127—Franklin, 0'; 128—Plymouth Salem, 0'; 129—Bentley, 0'; 130—Thurston, 0'; 131—Churchill, 0'; 132—Stevenson, 0'; 133—Franklin, 0'; 134—Plymouth Salem, 0'; 135—Bentley, 0'; 136—Thurston, 0'; 137—Churchill, 0'; 138—Stevenson, 0'; 139—Franklin, 0'; 140—Plymouth Salem, 0'; 141—Bentley, 0'; 142—Thurston, 0'; 143—Churchill, 0'; 144—Stevenson, 0'; 145—Franklin, 0'; 146—Plymouth Salem, 0'; 147—Bentley, 0'; 148—Thurston, 0'; 149—Churchill, 0'; 150—Stevenson, 0'; 151—Franklin, 0'; 152—Plymouth Salem, 0'; 153—Bentley, 0'; 154—Thurston, 0'; 155—Churchill, 0'; 156—Stevenson, 0'; 157—Franklin, 0'; 158—Plymouth Salem, 0'; 159—Bentley, 0'; 160—Thurston, 0'; 161—Churchill, 0'; 162—Stevenson, 0'; 163—Franklin, 0'; 164—Plymouth Salem, 0'; 165—Bentley, 0'; 166—Thurston, 0'; 167—Churchill, 0'; 168—Stevenson, 0'; 169—Franklin, 0'; 170—Plymouth Salem, 0'; 171—Bentley, 0'; 172—Thurston, 0'; 173—Churchill, 0'; 174—Stevenson, 0'; 175—Franklin, 0'; 176—Plymouth Salem, 0'; 177—Bentley, 0'; 178—Thurston, 0'; 179—Churchill, 0'; 180—Stevenson, 0'; 181—Franklin, 0'; 182—Plymouth Salem, 0'; 183—Bentley, 0'; 184—Thurston, 0'; 185—Churchill, 0'; 186—Stevenson, 0'; 187—Franklin, 0'; 188—Plymouth Salem, 0'; 189—Bentley, 0'; 190—Thurston, 0'; 191—Churchill, 0'; 192—Stevenson, 0'; 193—Franklin, 0'; 194—Plymouth Salem, 0'; 195—Bentley, 0'; 196—Thurston, 0'; 197—Churchill, 0'; 198—Stevenson, 0'; 199—Franklin, 0'; 200—Plymouth Salem, 0'; 201—Bentley, 0'; 202—Thurston, 0'; 203—Churchill, 0'; 204—Stevenson, 0'; 205—Franklin, 0'; 206—Plymouth Salem, 0'; 207—Bentley, 0'; 208—Thurston, 0'; 209—Churchill, 0'; 210—Stevenson, 0'; 211—Franklin, 0'; 212—Plymouth Salem, 0'; 213—Bentley, 0'; 214—Thurston, 0'; 215—Churchill, 0'; 216—Stevenson, 0'; 217—Franklin, 0'; 218—Plymouth Salem, 0'; 219—Bentley, 0'; 220—Thurston, 0'; 221—Churchill, 0'; 222—Stevenson, 0'; 223—Franklin, 0'; 224—Plymouth Salem, 0'; 225—Bentley, 0'; 226—Thurston, 0'; 227—Churchill, 0'; 228—Stevenson, 0'; 229—Franklin, 0'; 230—Plymouth Salem, 0'; 231—Bentley, 0'; 232—Thurston, 0'; 233—Churchill, 0'; 234—Stevenson, 0'; 235—Franklin, 0'; 236—Plymouth Salem, 0'; 237—Bentley, 0'; 238—Thurston, 0'; 239—Churchill, 0'; 240—Stevenson, 0'; 241—Franklin, 0'; 242—Plymouth Salem, 0'; 243—Bentley, 0'; 244—Thurston, 0'; 245—Churchill, 0'; 246—Stevenson, 0'; 247—Franklin, 0'; 248—Plymouth Salem, 0'; 249—Bentley, 0'; 250—Thurston, 0'; 251—Churchill, 0'; 252—Stevenson, 0'; 253—Franklin, 0'; 254—Plymouth Salem, 0'; 255—Bentley, 0'; 256—Thurston, 0'; 257—Churchill, 0'; 258—Stevenson, 0'; 259—Franklin, 0'; 260—Plymouth Salem, 0'; 261—Bentley, 0'; 262—Thurston, 0'; 263—Churchill, 0'; 264—Stevenson, 0'; 265—Franklin, 0'; 266—Plymouth Salem, 0'; 267—Bentley, 0'; 268—Thurston, 0'; 269—Churchill, 0'; 270—Stevenson, 0'; 271—Franklin, 0'; 272—Plymouth Salem, 0'; 273—Bentley, 0'; 274—Thurston, 0'; 275—Churchill, 0'; 276—Stevenson, 0'; 277—Franklin, 0'; 278—Plymouth Salem, 0'; 279—Bentley, 0'; 280—Thurston, 0'; 281—Churchill, 0'; 282—Stevenson, 0'; 283—Franklin, 0'; 284—Plymouth Salem, 0'; 285—Bentley, 0'; 286—Thurston, 0'; 287—Churchill, 0'; 288—Stevenson, 0'; 289—Franklin, 0'; 290—Plymouth Salem, 0'; 291—Bentley, 0'; 292—Thurston, 0'; 293—Churchill, 0'; 294—Stevenson, 0'; 295—Franklin, 0'; 296—Plymouth Salem, 0'; 297—Bentley, 0'; 298—Thurston, 0'; 299—Churchill, 0'; 300—Stevenson, 0'; 301—Franklin, 0'; 302—Plymouth Salem, 0'; 303—Bentley, 0'; 304—Thurston, 0'; 305—Churchill, 0'; 306—Stevenson, 0'; 307—Franklin, 0'; 308—Plymouth Salem, 0'; 309—Bentley, 0'; 310—Thurston, 0'; 311—Churchill, 0'; 312—Stevenson, 0'; 313—Franklin, 0'; 314—Plymouth Salem, 0'; 315—Bentley, 0'; 316—Thurston, 0'; 317—Churchill, 0'; 318—Stevenson, 0'; 319—Franklin, 0'; 320—Plymouth Salem, 0'; 321—Bentley, 0'; 322—Thurston, 0'; 323—Churchill, 0'; 324—Stevenson, 0'; 325—Franklin, 0'; 326—Plymouth Salem, 0'; 327—Bentley, 0'; 328—Thurston, 0'; 329—Churchill, 0'; 330—Stevenson, 0'; 331—Franklin, 0'; 332—Plymouth Salem, 0'; 333—Bentley, 0'; 334—Thurston, 0'; 335—Churchill, 0'; 336—Stevenson, 0'; 337—Franklin, 0'; 338—Plymouth Salem, 0'; 339—Bentley, 0'; 340—Thurston, 0'; 341—Churchill, 0'; 342—Stevenson, 0'; 343—Franklin, 0'; 344—Plymouth Salem, 0'; 345—Bentley, 0'; 346—Thurston, 0'; 347—Churchill, 0'; 348—Stevenson, 0'; 349—Franklin, 0'; 350—Plymouth Salem, 0'; 351—Bentley, 0'; 352—Thurston, 0'; 353—Churchill, 0'; 354—Stevenson, 0'; 355—Franklin, 0'; 356—Plymouth Salem, 0'; 357—Bentley, 0'; 358—Thurston, 0'; 359—Churchill, 0'; 360—Stevenson, 0'; 361—Franklin, 0'; 362—Plymouth Salem, 0'; 363—Bentley, 0'; 364—Thurston, 0'; 365—Churchill, 0'; 366—Stevenson, 0'; 367—Franklin, 0'; 368—Plymouth Salem, 0'; 369—Bentley, 0'; 370—Thurston, 0'; 371—Churchill, 0'; 372—Stevenson, 0'; 373—Franklin, 0'; 374—Plymouth Salem, 0'; 375—Bentley, 0'; 376—Thurston, 0'; 377—Churchill, 0'; 378—Stevenson, 0'; 379—Franklin, 0'; 380—Plymouth Salem, 0'; 381—Bentley, 0'; 382—Thurston, 0'; 383—Churchill, 0'; 384—Stevenson, 0'; 385—Franklin, 0'; 386—Plymouth Salem, 0'; 387—Bentley, 0'; 388—Thurston, 0'; 389—Churchill, 0'; 390—Stevenson, 0'; 391—Franklin, 0'; 392—Plymouth Salem, 0'; 393—Bentley, 0'; 394—Thurston, 0'; 395—Churchill, 0'; 396—Stevenson, 0'; 397—Franklin, 0'; 398—Plymouth Salem, 0'; 399—Bentley, 0'; 400—Thurston, 0'; 401—Churchill, 0'; 402—Stevenson, 0'; 403—Franklin, 0'; 404—Plymouth Salem, 0'; 405—Bentley, 0'; 406—Thurston, 0'; 407—Churchill, 0'; 408—Stevenson, 0'; 409—Franklin, 0'; 410—Plymouth Salem, 0'; 411—Bentley, 0'; 412—Thurston, 0'; 413—Churchill, 0'; 414—Stevenson, 0'; 415—Franklin, 0'; 416—Plymouth Salem, 0'; 417—Bentley, 0'; 418—Thurston, 0'; 419—Churchill, 0'; 420—Stevenson, 0'; 421—Franklin, 0'; 422—Plymouth Salem, 0'; 423—Bentley, 0'; 424—Thurston, 0'; 425—Churchill, 0'; 426—Stevenson, 0'; 427—Franklin, 0'; 428—Plymouth Salem, 0'; 429—Bentley, 0'; 430—Thurston, 0'; 431—Churchill, 0'; 432—Stevenson, 0'; 433—Franklin, 0'; 434—Plymouth Salem, 0'; 435—Bentley, 0'; 436—Thurston, 0'; 437—Churchill, 0'; 438—Stevenson, 0'; 439—Franklin, 0'; 440—Plymouth Salem, 0'; 441—Bentley, 0'; 442—Thurston, 0'; 443—Churchill, 0'; 444—Stevenson, 0'; 445—Franklin, 0'; 446—Plymouth Salem, 0'; 447—Bentley, 0'; 448—Thurston, 0'; 449—Churchill, 0'; 450—Stevenson, 0'; 451—Franklin, 0'; 452—Plymouth Salem, 0'; 453—Bentley, 0'; 454—Thurston, 0'; 455—Churchill, 0'; 456—Stevenson, 0'; 457—Franklin, 0'; 458—Plymouth Salem, 0'; 459—Bentley, 0'; 460—Thurston, 0'; 461—Churchill, 0'; 462—Stevenson, 0'; 463—Franklin, 0'; 464—Plymouth Salem, 0'; 465—Bentley, 0'; 466—Thurston, 0'; 467—Churchill, 0'; 468—Stevenson, 0'; 469—Franklin, 0'; 470—Plymouth Salem, 0'; 471—Bentley, 0'; 472—Thurston, 0'; 473—Churchill, 0'; 474—Stevenson, 0'; 475—Franklin, 0'; 476—Plymouth Salem, 0'; 477—Bentley, 0'; 478—Thurston, 0'; 479—Churchill, 0'; 480—Stevenson, 0'; 481—Franklin, 0'; 482—Plymouth Salem, 0'; 483—Bentley, 0'; 484—Thurston, 0'; 485—Churchill, 0'; 486—Stevenson, 0'; 487—Franklin, 0'; 488—Plymouth Salem, 0'; 489—Bentley, 0'; 490—Thurston, 0'; 491—Churchill, 0'; 492—Stevenson, 0'; 493—Franklin, 0'; 494—Plymouth Salem, 0'; 495—Bentley, 0'; 496—Thurston, 0'; 497—Churchill, 0'; 498—Stevenson, 0'; 499—Franklin, 0'; 500—Plymouth Salem, 0'; 501—Bentley, 0'; 502—Thurston, 0'; 503—Churchill, 0'; 504—Stevenson, 0'; 505—Franklin, 0'; 506—Plymouth Salem, 0'; 507—Bentley, 0'; 508—Thurston, 0'; 509—Churchill, 0'; 510—Stevenson, 0'; 511—Franklin, 0'; 512—Plymouth Salem, 0'; 513—Bentley, 0'; 514—Thurston, 0'; 515—Churchill, 0'; 516—Stevenson, 0'; 517—Franklin, 0'; 518—Plymouth Salem, 0'; 519—Bentley, 0'; 520—Thurston, 0'; 521—Churchill, 0'; 522—Stevenson, 0'; 523—Franklin, 0'; 524—Plymouth Salem, 0'; 525—Bentley, 0'; 526—Thurston, 0'; 527—Churchill, 0'; 528—Stevenson, 0'; 529—Franklin, 0'; 530—Plymouth Salem, 0'; 531—Bentley, 0'; 532—Thurston, 0'; 533—Churchill, 0'; 534—Stevenson, 0'; 535—Franklin, 0'; 536—Plymouth Salem, 0'; 537—Bentley, 0'; 538—Thurston, 0'; 539—Churchill, 0'; 540—Stevenson, 0'; 541—Franklin, 0'; 542—Plymouth Salem, 0'; 543—Bentley, 0'; 544—Thurston, 0'; 545—Churchill, 0'; 546—Stevenson, 0'; 547—Franklin, 0'; 548—Plymouth Salem, 0'; 549—Bentley, 0'; 550—Thurston, 0'; 551—Churchill, 0'; 552—Stevenson, 0'; 553—Franklin, 0'; 554—Plymouth Salem, 0'; 555—Bentley, 0'; 556—Thurston, 0'; 557—Churchill, 0'; 558—Stevenson, 0'; 559—Franklin, 0'; 560—Plymouth Salem, 0'; 561—Bentley, 0'; 562—Thurston, 0'; 563—Churchill, 0'; 564—Stevenson, 0'; 565—Franklin, 0'; 566—Plymouth Salem, 0'; 567—Bentley, 0'; 568—Thurston, 0'; 569—Churchill, 0'; 570—Stevenson, 0'; 571—Franklin, 0'; 572—Plymouth Salem, 0'; 573—Bentley, 0'; 574—Thurston, 0'; 575—Churchill, 0'; 576—Stevenson, 0'; 577—Franklin, 0'; 578—Plymouth Salem, 0'; 579—Bentley, 0'; 580—Thurston, 0'; 581—Churchill, 0'; 582—Stevenson, 0'; 583—Franklin, 0'; 584—Plymouth Salem, 0'; 585—Bentley, 0'; 586—Thurston, 0'; 587—Churchill, 0'; 588—Stevenson, 0'; 589—Franklin, 0'; 590—Plymouth Salem, 0'; 591—Bentley, 0'; 592—Thurston, 0'; 593—Churchill, 0'; 594—Stevenson, 0'; 595—Franklin, 0'; 596—Plymouth Salem, 0'; 597—Bentley, 0'; 598—Thurston, 0'; 599—Churchill, 0'; 600—Stevenson, 0'; 601—Franklin, 0'; 602—Plymouth Salem, 0'; 603—Bentley, 0'; 604—Thurston, 0'; 605—Churchill, 0'; 606—Stevenson, 0'; 607—Franklin, 0'; 608—Plymouth Salem, 0'; 609—Bentley, 0'; 610—Thurston, 0'; 611—Churchill, 0'; 612—Stevenson, 0'; 613—Franklin, 0'; 614—Plymouth Salem, 0'; 615—Bentley, 0'; 616—Thurston, 0'; 617—Churchill, 0'; 618—Stevenson, 0'; 619—Franklin, 0'; 620—Plymouth Salem, 0'; 621—Bentley, 0'; 622—Thurston, 0'; 623—Churchill, 0'; 624—Stevenson, 0'; 625—Franklin, 0'; 626—Plymouth Salem, 0'; 627—Bentley, 0'; 628—Thurston, 0'; 629—Churchill, 0'; 630—Stevenson, 0'; 631—Franklin, 0'; 632—Plymouth Salem, 0'; 633—Bentley, 0'; 634—Thurston, 0'; 635—Churchill, 0'; 636—Stevenson, 0'; 637—Franklin, 0'; 638—Plymouth Salem, 0'; 639—Bentley, 0'; 640—Thurston, 0'; 641—Churchill, 0'; 642—Stevenson, 0'; 643—Franklin, 0'; 644—Plymouth Salem, 0'; 645—Bentley, 0'; 646—Thurston, 0'; 647—Churchill, 0'; 648—Stevenson, 0'; 649—Franklin, 0'; 650—Plymouth Salem, 0'; 651—Bentley, 0'; 652—Thurston, 0'; 653—Churchill, 0'; 654—Stevenson, 0'; 655—Franklin, 0'; 656—Plymouth Salem, 0'; 657—Bentley, 0'; 658—Thurston, 0'; 659—Churchill, 0'; 660—Stevenson, 0'; 661—Franklin, 0'; 662—Plymouth Salem, 0'; 663—Bentley, 0'; 664—Thurston, 0'; 665—Churchill, 0'; 666—Stevenson, 0'; 667—Franklin, 0'; 668—Plymouth Salem, 0'; 669—Bentley, 0'; 670—Thurston, 0'; 671—Churchill, 0'; 672—Stevenson, 0'; 673—Franklin, 0'; 674—Plymouth Salem, 0'; 675—Bentley, 0'; 676—Thurston, 0'; 677—Churchill, 0'; 678—Stevenson, 0'; 679—Franklin, 0'; 680—Plymouth Salem, 0'; 681—Bentley, 0'; 682—Thurston, 0'; 683—Churchill, 0'; 684—Stevenson, 0'; 685—Franklin, 0'; 686—Plymouth Salem, 0'; 687—Bentley, 0'; 688—Thurston, 0'; 689—Churchill, 0'; 690—Stevenson, 0';