

CELEBRATING
OUR
43RD ANNIVERSARY
DURING
FARMINGTON'S 150TH!



All Greenfield Products
NOW 25% OFF
While they last

Shade Tree Specials
REG. 14.95 NOW...
\$12⁹⁵

(Crimson King) Norway Maple
REG. 19.95 NOW...
\$12⁹⁵

Michigan Peat & Top Soil
96¢ Per Bag

Firethorn
REG. 15.95 NOW...
\$10.95

Purple Leaf Plum
REG. 16.95 NOW...
\$12.95

ROSES
43 Varieties
\$2.50

PEACE • CHRYSLER IMPERIAL • TROPICANA • FIRST PRIZE & OTHERS

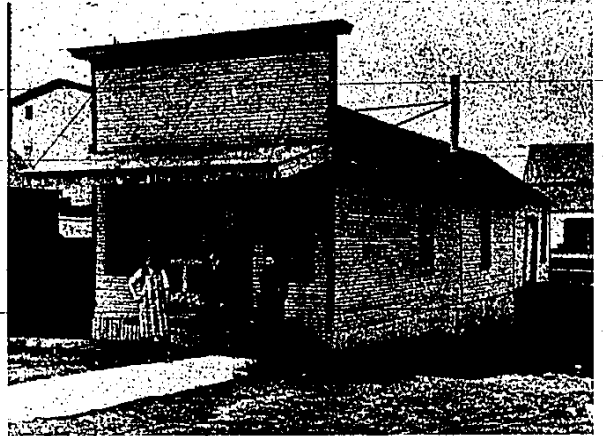
ALL JUNIPERS
REG. 8.95 NOW...
\$5⁹⁵

Blue Rug • Broadmoor • Gold Coast • Andorra • Hughes • Blue Chips

ALL FLOWERING SHRUBS ON SALE, TOO

Steinkopf Nursery

20815 Farmington Road
Farmington 474-2925
Closed SUN., 8 A.M. to 7:30 P.M. MON. - SAT.



THE OLD ENTERPRISE building with editor W. J. Richards in the middle and Grace Tremper on the right; the man at the left is unidentified. The page one below is from the first issue of Farmington newspaper, the Enterprise. Note the front page ads and the prices.

