

Aug. 1-2—Informal modeling of the Bill Blass fall collection at Saks Fifth Avenue, Somerset Mall, Troy.

Aug. 6-8—Informal modeling of the Larry Aldrich collection at Claire Pearone, Somerset Mall, Troy.

Aug. 1-2—Informal modeling of men's and women's furs from 1 p.m. to 8 p.m. at Brucker Furs, Oak Park.

LUNCHEON SHOWS

Thursdays
By Montgomery Wards at Ted's, Pontiac Mall.
By Brayton's at Bloomfield Canopy.

Fridays
By Alvin's at Bedell's, Bloomfield Hills.
By Clair Kelley at the Roman Terrace.

Tuesdays
By Alvin's at the Cooper's Arms, Rochester.

By Brayton's at Duffy's, Union Lake.

By Clair Kelley at the Roman Terrace.

Monday-Friday
By individual stores at Benno's on the Mall and Schrafft's Restaurant.

Tuesday-Friday
Informal lingerie modeling in the luncheon gardens of the Rocking Horse, Franklin.

Catholics schedule meeting and social

Separated and Divorced Catholics Club will hold a meeting and social evening at 8 p.m. Friday at St. Columban School, 1770 Melton, Birmingham.

For information call 548-3992 or 836-1309, evenings.

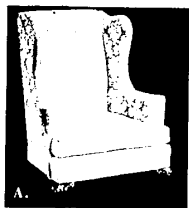
Fashion Calendar

mid-summer sale

Save 20% on James River 18th Century Mahogany Reproductions for Dining and Living Rooms . . .

Ride over to Wiggs . . . and enjoy the excellent savings throughout over-an-acre of Traditional Furniture Galleries. It's always fun to choose furniture and accessories . . . and even more so when you receive 20% Savings! Included in the sale selections is our complete James River Collection of mahogany, featured in our Georgetown Court. Each piece was inspired by heirlooms from historical James River Plantation homes in Virginia . . . carefully researched and skillfully scaled and reproduced to today's gracious living.

James River Chairs



A. Deep-seated, comfortable Wing Chair . . . a full 42" high Queen Anne leg of carved mahogany. Available in your choice of stain-resistant fabrics. Sale . . . from \$234.

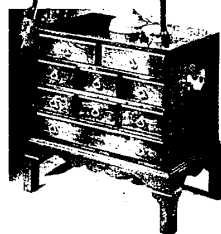
B. Queen Anne Wing Chair with stretchers. Poly/dacron-filled. Tufted seat is reversible. Excellent fabric selection. Sale . . . from \$264.

C. Elegant and graceful Arm Chair. Extremely comfortable. Solid mahogany arms and legs. Hundreds of fabrics available. Sale . . . from \$205.

James River Dining Room

James River mahogany Dining Room group. Authentic 18th Century reproductions, skillfully crafted in rich, amber mahogany. Magnificent Queen Anne Huntboard, 68" long . . . Sale \$455. Oval Queen Anne Table, 42" x 64" (opens to 88" with two 18" aproned leaves) . . . Sale \$385. Mahogany side Chair, in your choice of fabrics . . . Sale from \$91. Matching Arm Chairs . . . Sale from \$104. Majestic China, 78 1/2" tall, has three glass shelves and interior light . . . Sale \$719. Center right: Graceful Queen Anne Dining Table in smoothly carved mahogany, 44" round, opens to 80" with two 18" aproned leaves . . . Sale \$308.

Lower right: James River solid mahogany Silver Chest. Can be used as an End Table, Commode or an accent piece anywhere in your home. In stock for immediate delivery. Sale \$176.



Occasional Tables...



All in stock for immediate delivery!

a. Queen Anne End Table . . . 24" x 18". Sale . . . \$99

b. Queen Anne tilt-top Bird Cage Table . . . 30" dia. Sale . . . \$128.

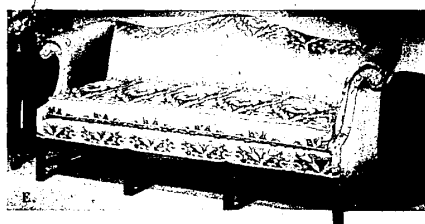
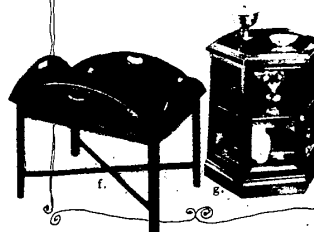
c. Queen Anne Table . . . 24" x 18" . . . with one drawer for storage. Sale . . . \$128.

d. Queen Anne End Table with magazine shelf. 19" x 24". Sale . . . \$128.

e. Drop-leaf Pembroke Table . . . 18" x 28" (opens to 35" x 28"). Sale . . . \$140.

f. Butler Tray Table . . . 22 1/2" x 31 1/2" (opens to 31" x 40"). Sale . . . \$143.

g. Showcase Hexagonal Table. 23" high with one glass shelf for displaying collectables. Sale . . . \$182.

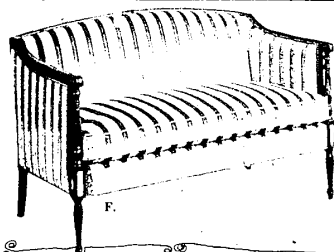


Graceful James River Loveseats and Sofas...

D. 71" long, serpentine-back sofa on solid mahogany exposed frame. One-piece poly/dacron seat. In your choice of fabric. Sale from \$464.

E. Camel-back Sofa . . . 86" long. The gently curved arms enclose the comfortable, one-piece poly/dacron seat. You select your favorite fabric. Sale from \$466. Sofa, 77" long . . . Sale from \$418. Loveseat, 57" long . . . Sale from \$343.

F. 55 1/2" long Sheraton Loveseat accented with Karelian Burl & brass nail trim. Reversible, one-piece poly/dacron seat. Your fabric selection. Sale from \$380. Also available in 77" Sofa . . . Sale from \$510.



Consult Wiggs Interior Designers

WIGGS
Since 1903
of Bloomfield Hills

4080 TELEGRAPH (at Long Lake Rd.)
open Mon., Thurs. and Fri. 'til 9 P.M. • 644-7370

Visit us and browse through the most unusual Furniture Galleries in Michigan. Our tri-level display encompasses over-an-acre of Furniture, Accessories, China, Silver and Giftware.