

Hills asks cooperation on border zoning

By DIANE HUBEL
FARMINGTON HILLS — The concern of Farmington Hills residents over a proposed Southfield shopping center may help establish a new system of cooperation in zoning matters between the two cities.

The Farmington Hills city council instructed the city manager to set up a meeting with Southfield officials to discuss the shopping center and to work out a system whereby the two cities would cooperate with each other when dealing with borderline zoning matters.

Representatives of the Churchill Commons Homeowners Association asked the city to assist them in their fight against a Southfield zoning decision.

zoned an area on 11 Mile and Inkster for a shopping center.

Although the shopping center will be in Southfield it will be across the street from a Farmington Hills subdivision.

According to an attorney for the Homeowners association there is concern among residents that the shopping center will not only ruin the rural atmosphere of the area but also directly affect traffic patterns in the area.

He said the residents are afraid the shopping center will increase traffic, forcing the city to widen Inkster to a five lane highway and add ingress and egress to the expressway.

Three attorneys, Paul Rosen, Michael Feilek, and John Brady have volunteered their services to the Homeowners Association.

Feilek, a zoning attorney said, "The area is in the rear end of Southfield, they don't care what they put in there. Their nearest residential area is too far away to be adversely affected by it but it does affect the Farmington Hills residents living there."

The attorney said they were willing to take the matter to court if their clients should instruct them to do so, but first wished to attempt to settle out of court.

"IT IS OUR feeling that the city should become involved in this matter," Rosen said.

"It is important that communities cooperate with each other to insure that the people who live on boundaries at least have an opportunity to be heard about zoning that might affect them."

"Speaking from a practical standpoint, and in view of our past lack of cooperation with Southfield in that area, I would say that they will probably tell us to bag it."

— Mayor Frederick Lichtman

"Your counterparts and colleagues in Southfield would be more likely to listen to you than they would to a bunch of irate citizens," he added.

Councilman Joan Dudley urged the council to assist the committee.

"I would like to see the city become involved in what could be a precedent-setting action," she said.

"If we fail in our attempts to converse with them I would not be

opposed to taking court action. We might lose, it is true, but if we win we could set a precedent which would affect the entire state. We could hold our heads up high if we helped promote the cause of regional planning."

SHE CALLED it a progressive, forward looking cause, and said that it was one of the best that the city could participate in.

Mayor Frederick Lichtman said, "From a purely practical standpoint and in view of the past lack of cooperation we have given them in that area I would be willing to say that they will probably tell us to bag it."

Lichtman said Farmington Hills decided not to cooperate with Southfield when they were asked for assistance with a storm drainage system and street paving in the area.

SOUTHFIELD RECENTLY

Affluent still need adult education

"Although the Southfield area is generally comprised of highly educated and affluent residents, there is still a need for an adult high school education program," said continuing education director Robert Mehoke.

More than 200 persons participated in last year's program, including housewives, retirees and recent immigrants to this country.

All courses offered are free to persons working for a high school diploma and not enrolled in regular day school classes.

There is no charge to veterans, regardless of age, if the course is taken for high school credit.

A basic adult education course which serves as a refresher for persons out of school several years is held 7-10 p.m., Mondays and Wednesdays at Southfield-Lathrup High School.

ENGLISH AS a second language is offered at the same times to all adults who want help in mastering speaking, writing and reading skills.

"At one point, we had over 30 different languages spoken in the class. On the average, class members are exposed to 15 different languages. Some students speak no English at all," Mehoke said.

The Continuing Education Department also offers an accelerated high school daytime program for persons 25 and older. Studies include English, history, civics, economics, science and mathematics.

The class meets 9 a.m.-noon, Mondays through Fridays, at Southfield-Lathrup High School, 19301 Twelve Mile Road.

High school electives are available in accounting, ceramics, jewelry, sculpture, sewing, shorthand, typing and watercolors. One-half credit is awarded to all persons completing two consecutive terms in one elective. Classes meet 7-10 p.m., weekdays.

"**WE WELCOME** residents from surrounding communities to take advantage of all adult education programs," Mehoke said.

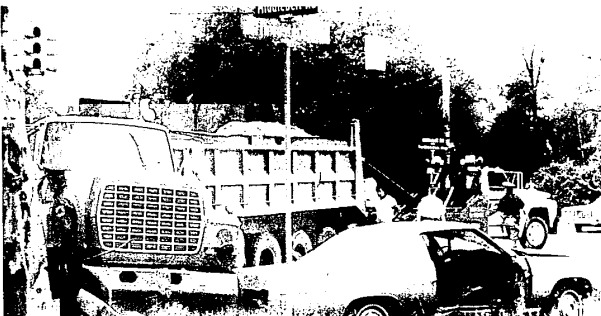
"Last year, 10 percent of our enrollment was comprised of non-residents. As more people enroll in the program, we will be able to expand course offerings and offer a wider variety of classes."

"At present we are looking for additional teaching personnel for both academic and non-credit courses."

Chris Pargoff, serving as assistant community schools director, is a recent addition to the department. His duties include locating and encouraging persons to join the adult education and English language programs.

"The Oakland County Health Department has been assisting us in bringing people into the program," he said.

THE COMMUNITY Education staff encourages persons in the English language program to participate in planned social gatherings. Last year, an international smorgasbord luncheon was held in cooperation with St. Bede parish for the foreign born students.



Northwestern crash

A jackknifed gravel truck injured the driver, and three others before it halted on Northwestern near Middlebelt Rd. Tuesday. The driver apparently ran a red light, according to Farmington Hills police reports. Injured were the driver, Archie C. Day, 26, of Ontario; Sue Ann Freedland, 28, 32748 Olde Franklin Drive, Farmington Hills; Kyle H. Krup-

sky, 17, 5028 Cold Spring Lane, West Bloomfield; and Tracy Fulkerson, 15, 7110 Valley Brook Lane, West Bloomfield. The truck collided with a car driven by Ms. Freedland causing a second collision with the car driven by Krupsky, according to police reports. (Photo by Ralph Evert)

the good stuff's on sale

3 more sale days

Acquire a perfect foreign accent. And, at 20% off our direct-import prices.

Consider us your local bazaar. For the international good stuff... The finest imports in the world, from the costliest to the simplest. For the very best prices around. Why? Because we send our own buyers wherever the best values are... To tiny, dusty Etruscan villages. Into artisans' homes. And remote foreign factories. We've even been to Count Bussandri's ancestral castle in Italy to choose unique, exact replicas of 18th century masterpieces — like this magnificent open bookcase. Then we ship our choice discoveries (many one-of-a-kind) directly home to Detroit, to you. And now, during our storewide mid-summer sale, you'll even save on our direct-import savings. With at least 20% off on all the international good stuff, Michigan's largest selection of imports! Only at Englander Triangle. (Only a short trip away.)

was \$3,200 now \$2,495

was \$399 now \$319

was \$135 now \$99

was \$419 now \$329

was \$229 now \$179

was \$28 now \$22

was \$299 now \$239

was \$185 now \$148

was \$425 now \$339

was \$275 now \$219

the good stuff's on sale

annual storewide mid-summer sale at

Englander Triangle

BIRMINGHAM / ROYAL OAK / NORTHLAND / EASTLAND / WESTLAND / ANN ARBOR (2333 South State Road, 1/2 mile North of Briarwood Shopping Center) / PALM BEACH (WORRELL'S)
OPEN 10 A.M. to 9 P.M. (BIRMINGHAM TUES. AND WED. UNTIL 5:30)