

Your Action Team In The State Legislature

In The Michigan Senate



8th District

DONALD E. BISHOP *

A member of the Michigan Legislature since 1966, Senator Bishop is seeking his second term in the State Senate. He was elected to the State House of Representatives in 1966 following graduation from the Detroit College of Law, was re-elected to a second two-year term in 1968. Bishop, a resident of Rochester, was elected to the Senate in 1970 where he serves as Chairman of the Senate Corporations and Economic Development Committee. He resides with his wife and their five children in Rochester.



15th District

LEE A. COPPOCK

Lee Coppock majored in political science at Central State University and is utilizing his "know how" and energy in his race for the Michigan Senate. Lee is 27 and lives in Farmington Hills with his wife and their five children. Besides playing an active role in the Kiwanis, the Junior Chamber of Commerce and the Forest Park Baptist Church, Lee was appointed to the Mayor's committee to research the United Fund and has consistently shown a penchant for sharing his valuable time with his community.



16th District

ROBERT L. DONDERO

Following in the footsteps of his father, the late Congressman George A., and his brother, the late Oakland County Circuit Judge, Stanton G., Robert Dondero is campaigning as the Republican candidate for the new 16th Senate District in Oakland County. Dondero, a life-long resident of Royal Oak and a graduate of Wayne State, said he is seeking office "... in order to perpetuate in government some of the fine principles of my father, such as honesty, integrity and responsibility."



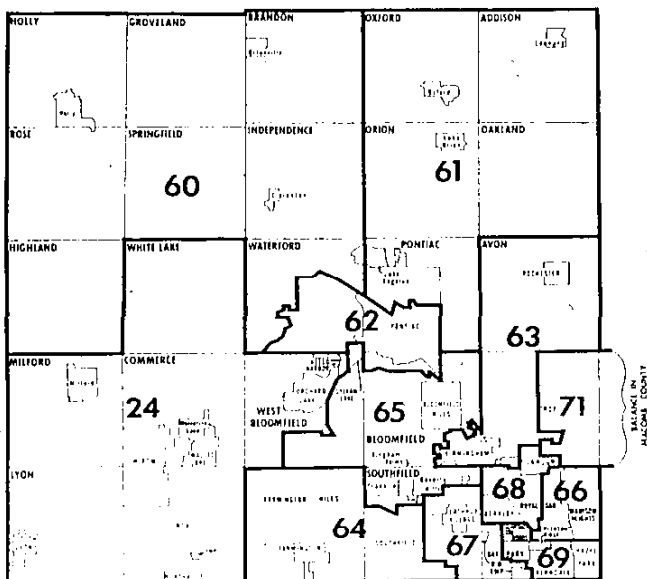
17th District

L. HARVEY LODGE *

A practicing attorney, Senator Lodge is a former Assistant Attorney General; served as Assistant, Chief Assistant and Prosecuting Attorney of Oakland County, Michigan House of Representatives and Michigan State Senate for the old 12th District. He is a graduate of the University of Michigan and is a member of the American, Michigan and Oakland County Bar associations. The Senator is President Pro Tem of the Michigan Senate and Chairman of its Commerce Committee.

In The State House of Representatives

State Representative Districts



RICHARD D. FESSLER
24th District



LOREN D. ANDERSON
60th District *



MEL LARSEN
61st District *



JAMES BRINEY
62nd District



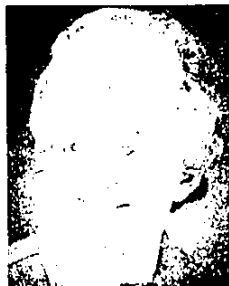
RUTH B. MCNAMEE
63rd District



WILBUR S. BROTHERTON
64th District



JAMES E. DEFEBAUGH
65th District *



SHIRLEY M. GAST
66th District



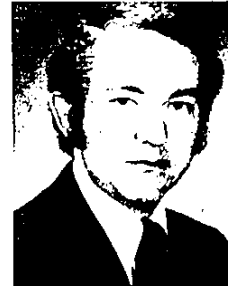
LYNNE JACKSON
67th District



WILLIAM HAYWARD
68th District *



JIM LANNI
69th District



JOSEPH W. WERNER
71st District