

# Cedar Combats 'Moth Peril'

Warm weather heralds the beginning of the moth season, a period of peril for fine woodens and furs.

To combat the "moth peril," give high priority to building a moth-repellent cedar closet. Not only will it soon pay for itself in dry cleaners' storage bills, but it will last a lifetime, lend positive protection against moth damage, and add

a desirable resale feature to your home.

If your home has abundant closets, line an existing one with cedar. If your house is closet-shy, build an entirely new one.

IF YOU carefully survey your home, you're sure to find an area in the basement, attic, under stairs or waste space in

a hall that can be enclosed to create a new cedar closet.

You can easily do-it-yourself if you have any talent with hammer, saw and nails. Material cost is modest, too. Cedar lining required for an average-sized closet should not exceed \$60.

If you are building a new closet, use 2"x4" lumber on 16-inch centers to frame it

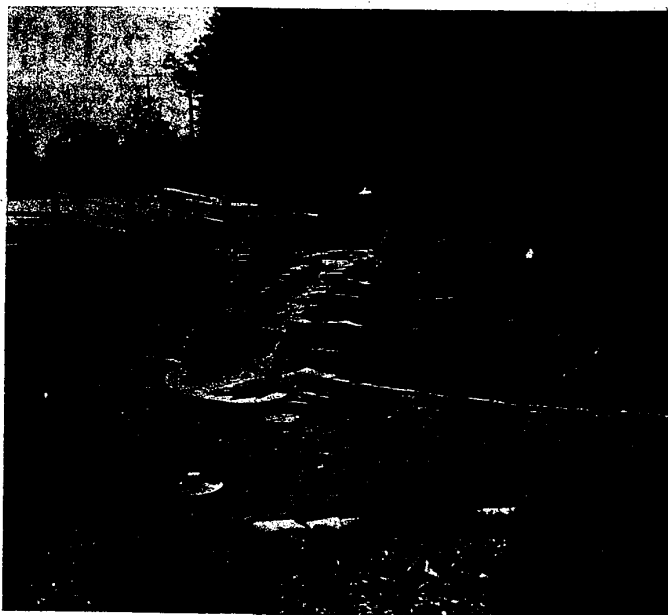
out. If part of the closet includes existing plaster walls or ceilings, locate the studs behind them by driving experimental nails into the plaster. The nail holes won't matter as they will soon be covered by the cedar lining.

START WITH an inside corner wall and lay the cedar horizontally. You will only need one nail to affix planking to each stud and as the cedar is tongue-and-grooved on all sides, each piece will firmly lock into its neighbor whether or not the joint falls on a stud.

When the first horizontal line of planking has been completed, start building up successive horizontal lines of cedar. Don't be concerned at corners if you don't get perfect fits as these small gaps can be covered up with mauling lath. Once you've completed the walls, it's best to cover the ceiling, floor and even the inside of the entry door in the same fashion.

Before installing shelves and rods, carefully consider just how you will use the closet. Design an arrangement that makes maximum use of existing wall space. Advance planning can result in providing at least one-third more storage space.

Cedar closet lining is available at leading lumber dealers everywhere and every panel packet comes with complete installation instructions.



First "Taps"

In 1862, during the Civil War, Gen. McClellan had his headquarters at Berkeley, then called Harrison Springs, Va., and it was here that summer that Gen. Butterfield composed "Taps."

NEW OUTDOOR PATIO dining facilities of the Thunderbird Inn, Northville Road near Phoenix Road in Plymouth Township, were unveiled for the first time last week. The patio, which borders Hines Parkway, is one of the most beautiful

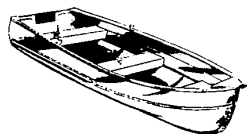
in the Detroit area. It has a unique waterfall, entrances from the lower level of the Inn and from the parking lot. The management started plans on the patio during the winter and the work was completed two weeks ago.

# Sears

SEARS, ROEBUCK AND CO.

Here's Proof that  
Sears and Savings  
Go Together!

# Marine Clearance Sale



## Deluxe 12' Semi-Boat

Blue-painted heavy-gauge aluminum three-seat car-topper. Handle-up to 9 HP motor. Spray rails, ear locks. Wood motor mount. Weighs 97 lbs.

Reg. \$189  
**\$139**  
No Money Down

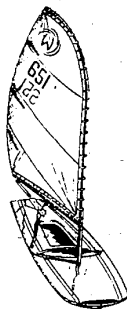


## SAVE \$400

### 14 1/2' Fiberglass Deluxe Tri-Hull

Designed for fishing. Three keels provide smooth-riding stability. Mahogany-finish console. Three seats. Steering wheel, cables, controls.

Was \$599  
**\$199**  
12 mo. sell



### Fiberglass 14' Sailboat

95-sq. ft. sail rigs easily. High speed hull. Retractable centerboard. Flip-up rudder. 53" beam.

Was \$49.95  
**\$399**  
12 mo. sell



### Fiberglass 14 1/2' Tri-Hull

Open cockpit with vinyl upholstered back-to-back seats. With steering wheel and cables.

Was \$549  
**\$399**  
12 mo. sell

## Fishing Boats

### 10' Aluminum Jon Boat

Takes you into shallow spots. Flat bottom gives stability. Bow, stern handles. Easily carried on car top.

**\$58**  
9 to sell

12' Aluminum Jon Boat  
Economy model with flat bottom. Handles. Car-topper.  
**\$68**  
11 to sell

10' Olive Drab Jon Boat  
Shallow draft, sturdy aluminum. Car-topper.  
**\$78**  
13 to sell

12' Painted Jon Boat  
Rugged aluminum with 45 1/2" beam. Weighs only 25 lbs.  
**\$88**  
16 to sell

14' Standard Jon Boat  
Lightweight car-topper. Aluminum. Easily carried.  
**\$99**  
21 to sell

14' Wide Beam Jon Boat  
Wood transom. 56" beam. Weighs 32 lbs.  
**\$168**  
9 to sell

16' Extra Wide Jon Boat  
Wood transom. 149 lbs. 56" beam. Aluminum.  
**\$188**  
19 to sell

12' Economy Semi-V Boat  
Lightweight aluminum. Easily carried on car.  
**\$122**  
7 to sell

14' Economy Semi-V  
Lightweight aluminum car-topper.  
**\$144**  
3 to sell

Heavy-Duty 16' Jon Boat  
Aluminum with 5 keels. 4 seats. 237 lbs.  
**\$322**  
16 to sell

14' Extra Deep V-Boat  
Deep fisherman. Easy to care for aluminum.  
**\$288**  
21 to sell

16-ft. Semi-V Coho  
Special Aluminum Boat - 70" Beam.  
Was \$429  
**\$399**  
17 to sell

10' Sailing Dinghy  
Fiberglass hull. Float tanks. 60 sq. ft. sail.  
**\$299**  
19 to sell

## Boat Trailers

750-lb. Capacity  
For boats 14 to 15 feet. Rugged steel frame.  
**\$149**  
24 to sell

900-lb. Capacity  
For boats 14 to 15 feet. Rugged steel frame.  
**\$199**  
7 to sell

1,200-lb. Capacity  
Rugged steel frame. For 16-17-ft. boats.  
**\$233**  
11 to sell

1,500-lb. Capacity  
For boats 16 to 17-ft. Heavy-duty frame.  
**\$299**  
6 to sell

1,800-lb. Capacity  
Heavy-duty frame. With brackets. 16 1/2-ft. boats.  
**\$399**  
7 to sell

## Fishing Motors

7.5 HP Electric Start  
Twist-grip throttle. Auto-hall. Weighs 26 lbs.  
**\$344**  
4 to sell

14 HP with Remote Tank  
Recoil start. Twist throttle. Auto-hall.  
**\$299**  
27 to sell

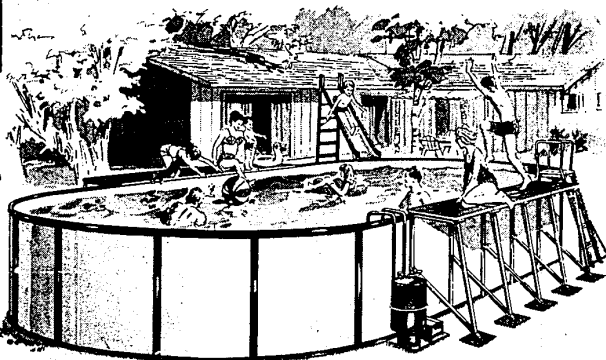
NO MONEY DOWN on Sears Easy Payment Plan

Sears

# Sears Swimming Pool CLEARANCE SALE



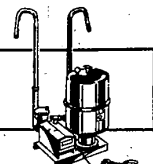
NO MONEY DOWN on Sears Easy Payment Plan



## 24-Ft. Giant Oval . . . Sears Backyard Pool

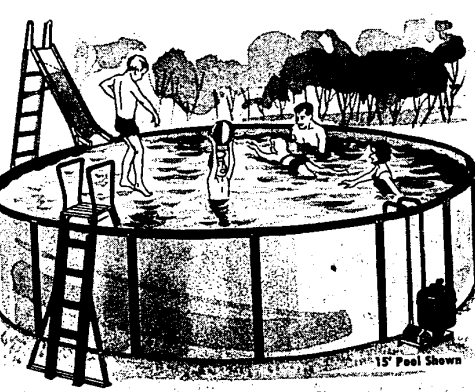
Here's real funtime in the sun. Big enough for the entire family. Two redwood sun decks for sunning or just relaxing. 24x12x4-ft. pool has heavy-gauge vinyl liner, galvanized rails, sidewalls and supports.

Regular 399.95  
**329.97**  
Pool Only



## Sears Filter for 12-ft. Pool

6-square-foot filtering area. Automatic jet stream for easy cleaning-integral hair and lint strainer.  
Reg. \$9.95  
**\$4.77**  
120 to sell



## 12'x36" Pool for Family Funtime

Regular 59.95  
**41.97**  
Pool Only

12-ft. round-bottomed pool is 36 inches deep, just right for children to swim in their own backyard. Side rails are steel with baked-on enamel to resist rust. Vinyl liner.

Reg. 99.95 15-ft. x 42" Round Pool . . . . . \$4.97  
30 to sell

Reg. 159.95 15-ft. x 48" Round Pool . . . . . 129.97  
30 to sell

Reg. 199.95 18-ft. x 48" Round Pool . . . . . 169.97  
30 to sell

Open Monday, Thursday, Friday, Saturday 9 to 5, Tuesday, Wednesday 9 to 5:30

Sears

Grand River at Jackson, WY 83300 • Lincoln Park, Northfield at Elk, UT 83408 • Pontiac, 151 N. Saginaw, MI 48171

Grand at Van Dyke, WA 50100 • Lincoln Mall, 7 Mile at Middlebelt, MI 48001 • Wyandotte, Middlebelt, MI 48000

Woodward, Highland Park, TX 81300 • Hancock Mall, Grand at 15 1/2 Mile Rd., 29380 • Greer Park, 7 Mile, MI 48000

Chandler Mall, 14 Mile Rd. at John R., MI 48119