

In The Pocket

By W.W. EDGAR



Don't be a bit surprised if the entire concept of league bowling is changed within the next decade.

For years on end the ancient game was built around five-man teams with each member bowling three games and lineage was based on 15 Man per team.

Now, along comes Frank Baker, secretary-emeritus of the American Bowling Congress, with a novel idea of team play. Under his plan which was tried out in the recent spectacular staged on the ABC lanes in Ohio, the bowlers change with each frame.

As an example, the head-of-man bowls the first frame, the No. 3 man bowls the second, etc. This means that each bowler rolls only two frames each game.

It sure is novel. Will it ever be adopted?

There is no telling. With the great demand for league lanes in prime time it could be the next move.

Don't forget that the all-star once laughed at the idea of "one game knockout" tournaments. Yet, the pro tour on television proved a success because of the drama of one game struggles.

It isn't so many years ago that five-

man team competition was the basis for the game's national popularity. Now such things as national five-man team match game championships are almost forgotten. So, don't laugh at Frank Baker's latest idea.

It could happen.

NOW THAT THE RECORDS are in for the 1972-73 league season it is interesting to note the highest games rolled in the nation's sanctioned leagues. The American Bowling Congress has just released the following performance:

FIVE MAN TEAM SERIES
Special Edition, San Antonio, Texas-200

FIVE MAN TEAM GAME
Widman Harley Davidson, St. Louis, Mo. 1218
(Firebird Lounge of Pontiac lapped fourth with 1275)

TWO MAN TEAM SERIES
Mike Shahan-Pete Proutard, Fresno, Calif. 1185
(Rick La Rue and Larry Shoran, of Baginaw placed second with 1181)

INDIVIDUALS
Ken Romer, Alameda, Calif. 686
(There were 25 series above 686 with no Michigan bowler listed)

WHEN CHARLIE STAGGS turned in a 227 game in a 300 series last week in the mixed leagues at Woodland Bowl, many figured it was just a lucky night for him.

He proved it wasn't a matter of luck when he returned this week and even surprised himself with a 236 in 300.

Maybe he's just a summer bowler.

ELIZABETH LEBRON caused a stir in the ladies classic at Eastland Bowl for a couple of minutes in her attempt to overtake Helen Clark, whom 1969 has led the event since the start. Elizabeth rolled a 187, the high game of the tournament so far, only to fall 30 pins short and settled for a 167.

Bill Carter was the man of the hour at Garden Bowl this week. He bowled a 226 in 300 to take top place in the Monday Night League. At this figure he had a 30-pin edge on Greg Kalmowaki while Al Hernandez landed third with 201.

Blondin's blast

Gilbert Blondin of Livonia scored his second Michigan hole-in-one earlier this month when he aced the 375 yard 65th hole at The Dunes Golf Club. Blondin, a 65-year-old retiree, used a driver to record the second ace of his career. Blondin shot a 67 for the nine holes.

Dynos advance to league final

The Livonia Dynamos of the Michigan Youth Soccer League defeated Farmdale 7-4 Sunday to advance to the league finals next Sunday. The team, which is coached by Reynolds Aluminum, finished the regular season with a 7-1-1 record. Next Sunday's league championship game will be played at Cobo Lake against Utica Sun.

ORTHO: for a more perfect garden.

Special: \$1.00 off the regular price
Offer good until June 30, 1973

Growing beautiful roses is easy if you protect the leaves and buds from insects and diseases, and feed them frequently to replenish soil nutrients vital to flower production. Use these proven ORTHO products for protection and feeding.

ORTHO Isotox Insect Spray is a garden insecticide that kills sucking and chewing insects on roses, flowers, trees and shrubs. Kills fast and continues to control for up to 2 weeks. Systemic absorption through foliage and roots prevents wash-off by rain or sprinkling.



ORTHO Rose and Floral Spray - aerosol insecticide/fungicide for small gardens or spot treatment. Special - you get 3 ounces more than regular 14 oz. size.

\$1.98

Harold Thomas

NURSERY

14025 Middlebelt
421-2888

KITCHEN REMODELING



Custom Cabinets
Tops - Vanities
Bathroom Remodeling
VISIT OUR DISPLAYS
Built in - Bars - Slab
Tops - Ash - Birch - Walnut

"THE CABINET PROFESSIONALS"

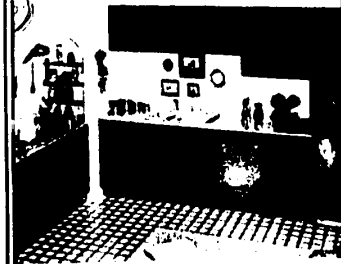
RICH WALL CABINET CO. LTD.

27005 Michigan - Inkster

1 mile west of Telegraph

JUNE IS KITCHEN RE- MODELING TIME AT REDFORD-PLUS REAL SAVINGS TOO!

"HOMECREST"



A NEW EXPRESSION OF ELEGANCE...
CRISP EFFICIENCY COMBINED WITH
OLD ENGLISH CHARM...

Carriage Oak
SAVE UP TO 40% OFF

KITCHENS OF LASTING BEAUTY



WE'LL HELP
YOU PLAN
A new kitchen
custom designed
for your family

SAVE UP TO 30%

LUMBER

PANELING • FENCING

ROOFING SHINGLES
WHITE 548 BUNDLE
COLORS 588 BUNDLE
FREE ESTIMATE ON COMPLETE JOBS

REDFORD SPECIAL
3/4" - 4" x 8"
GOOD - ONE-SIDE
REG. 13.45
1175 EA.

ALUMINUM SIDING
IT MAKES A DIFFERENCE
LESS BACKER W/BACKER
34⁹⁵ 39⁹⁵ EA.

BUNGALOW PANELS
4x8
MEDIUM
COLOR
299 EA.

1 x 12 SHELVING
RANDOM LENGTHS
#3 PONDEROSA
PINE
27⁹⁵ EA.

UTILITY DOORS
LOW AS
199 EA.

DELUXE PINE TABLE
Easy Assembly
8' x 8'
REG. \$37.95
37⁹⁵

DRIVEWAY SEALER
COAL-TAR BASE
6⁹⁹ 5-gal. can

4" x 4" - 8' FIR
259 EA.
REDWOOD TIES
4" x 6" **69⁹⁵** C/LIN. FT.

4' x 8' PLYWOOD
C-1-S
10 25 25 25
1/4" 8.99 8.43
1/2" 8.99 8.43
3/4" 9.95 9.79
1" 11.24 11.00

C-DX PLYSCORD
1/2" - 4' x 8'
569 EA.

PARTICLE BOARD
4' x 8'
10 25 25 25
1/4" 3.79 3.63
1/2" 4.99 3.93
3/4" 4.79 4.03
1" 5.89 5.53

Andersen Windowalls
SAVE UP TO 20%
Come in today and see for yourself!

LAUAN UNDERLAYMENT
1/4" - 4' x 8'
SOLID CORE
549 EA.

DIMENSION LUMBER
ASSOCIATION GRADE STAMPED
CONSTRUCTION AND STANDARD LUMBER

Length	2x4	2x6	2x8	2x10	2x12	4x4
8'	1.99	2.99	3.99	5.99	7.99	8.99
10'	2.49	3.49	4.49	6.49	8.49	9.49
12'	2.99	3.99	4.99	6.99	8.99	9.99
14'	3.49	4.49	5.49	7.49	9.49	10.49
16'	3.99	4.99	5.99	7.99	9.99	10.99

2" x 4" 8' 69⁹⁵ EA.

REDFORD CASHWAY LUMBER

Location	Phone
ROYAL OAK	848-2153
LIVONIA	261-6110
WARREN	775-7000

30% OFF DRYWALL 30% OFF
100% 30% OFF PRICES LISTED BELOW
2 1/2" MIN. NOW 1 1/2" MIN. NOW
4x7 2⁹⁵ 1⁹⁵ 4x7 2⁹⁵ 1⁹⁵
4x8 2⁹⁵ 1⁹⁵ 4x8 2⁹⁵ 1⁹⁵