

Farmington antique show brings enjoyment for area collectors

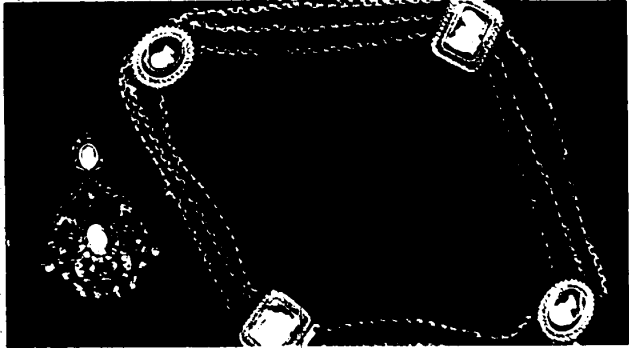
By CORINNE ABATT
From the day 15 years ago when she bought her first antique, a wooden

ATTENTION BOWLERS!
Prime League Openings
(Start September or October)
For Existing
• Leagues (every week, or every other week.)
• Teams (3's, 4's, or 5's)
• Men, Women, or Mixed
• Couples
• Individuals
Call or Stop in Today at
Beautiful Strike 'n Spare Lanes
W. 15 Mile at Telegraph
See Mikki Fink @ MI 4-8300

shovel. Jean Cohen has had an abiding love for the arts of antiquity. At first it was just a hobby, buying and refinishing furniture, picking up small decorative pieces. "I couldn't stop buying," she says, "and pretty soon we were overwhelmed."
Only one thing to do, sell. First it was out of the garage, later in shows. Gradually she began to acquire pieces of antique jewelry and she says, "I found that was my true love."
It remains the Livorno woman's love in spite of a robbery which completely wiped out the collection three years ago.
NOW, WISER, she keeps the collection stored in a bank vault taking it out only for shows like the one being held at the coach house of the Botstorf Inn in Farmington, Aug. 31 Sept. 1, Labor Day weekend.

She says about the robbery, "They completely wiped me out, took \$30,000 worth of jewelry, a milk cow, my car—everything. I cried for three days, didn't know what to do, but after three days I knew I had to go back into business. I did a show with a few things I scraped together and with help from some dealer friends, made \$500."
That second beginning paid off. She says she has acquired a vast collection of choice pieces in the three years since—the time safely stored away.
Not only does she sell at the shows which she does about twice a month, she is approached by many who have pieces for sale.
ALTHOUGH SHE BUYS in Europe—England, Paris and Amsterdam—she says, "The picking is just as good right here."
There is a steady, good market for

antique jewelry and many help her in investment as well as pleasure. But there are trends.
Mrs. Cohen predicts gem will always be an important high fashion item. Rings are always in demand and right now there is a steady demand for chains.
Those who want to start a modest collection of antique jewelry should acquire the first piece, fine design, good quality gold and workmanship for between \$50 and \$100. Even for gold filled.
"If a person wants to learn about antique jewelry he should go to his library, visit museums and use the libraries," says Mrs. Cohen.
Mother of two married children, grandmother of six, the attractive collector, knows from experience the risks of her business. But, even so, she couldn't turn her back on the beauty and fun it generates.



This is the type of antique jewelry which will be featured at the Botstorf Inn Antique show on Aug. 31 and Sept. 1.

Deduct Up To \$1,500 A Year From Federal Gross Income
If you are working but not covered by a pension plan you may be able to use up to \$1,500 a year in set-up your own retirement fund on a tax deductible basis.
Call or write
Thomas E. Walsh
1411 S. Washington
Royal Oak, Mich. 48067
Ext. 544-4345 Res. 534-8573
Metropolitan Life
Where the future is now!
Metropolitan Life, New York, N.Y.

FARMER'S MARKET
DOWNTOWN NORTHVILLE
FRESH HOMEGROWN PRODUCE
EVERY THURSDAY
9:00-4:00 p.m.
IN THE MAIN STREET PARKING LOT
sponsored by the Retail Merchants Association

For Jewish Humanists ROSH HANUVA and YOM KIPPUR are opportunities for personal reflection. They are times of celebration when we affirm the power of human beings to assume responsibility for their lives.
ROSH HANUVA
will present services on the theme:
SUCCESSFUL LIFE STYLES
ROSH HANUVA
Evening Friday, September 8, 8:00 P.M. COPIING WITH ONELINESS
Morning Saturday, September 9, 10:00 A.M. COPIING WITH BOREDOM
YOM KIPPUR
Evening Sunday, September 10, 8:00 P.M. COPIING WITH MEDICRACY
Morning Monday, September 11, 10:00 A.M. COPIING WITH HOSTILITY
Memorial Monday, September 11, 4:00 P.M. COPIING WITH DEATH
CHILDREN'S SERVICES (ages 4-9)
Rosh Hanuva Sunday, September 10, 2:00 P.M.
Yom Kippur Monday, September 11, 2:00 P.M.
YOUTH SERVICES (ages 10-12)
Rosh Hanuva Sunday, September 10, 3:00 P.M.
Yom Kippur Monday, September 11, 3:00 P.M.
Tickets of admission are required for all adult services. Non members may purchase tickets by calling the Temple Secretary. Tickets are not required for children and youth services.

End of Season Pool Supplies Sale
15%-40% Off All Items In Our Store
Enjoy terrific savings on chemicals, equipment, toys and games plus many other pool related items. Some of our accessories and games make excellent holiday gifts.
Special Features:
Rid O-Ray Bug Lites 119⁹⁵ Reg. 159.95
Swinging Lounger 94⁹⁵ Reg. 139.95
Webster Grills Discounted Prices
• Hansen Filters
• Pool Sweeps
• Sta Rite Pumps
• Ray Pak Heaters
• Slides
• Diving Boards
JACK ROBERTS POOL SERVICE, INC.
32750 Northwestern Hwy., Farmington 851-1510

Calendar
EQUALITY DAY
Tuesday, Aug. 28: Wayne State University's Women's Studies Program will host a Women's Equality Day celebration at the Southfield Center, 26410 Eleven Mile Road, Southfield. Activities including workshop, exhibits and speakers will begin at 9:30 a.m. and end at 4:30 p.m.
Two speakers will be featured. Susan Stark will speak at 10:30 a.m. on the role of women in the media. Dr. Sonya Friedman will speak at 2:30 p.m. on "Changing roles of women in the '70s."
BOOK DISCUSSION
Thursday, Aug. 28: The Farmington branch of the Farmington Public Libraries will hold a book discussion at 7:30 p.m. on "Deliverance" by James Dickey.
NO BREAKFAST
Sunday, Aug. 31: A pancake breakfast usually held by the Farmington Masonic Temple has been cancelled. The breakfast had been set for 9 a.m. to 1 p.m. at the Masonic building on the corner of Farmington and Grand River roads.
ARTIST LISTING
Artists may register for a statewide art directory through Friday, Aug. 29. Name, address and interest area should be sent to the Farmington District Library, 32737 Twelve Mile Road, Farmington Hills, attention Jane Christopher. The registration is locally sponsored by the Farmington Community Arts Council.

Farmington Observer & Eccentric
Published every Monday and Thursday by the Observer & Eccentric Newspapers, 2881 Schaeffer Rd., Livonia, Michigan 48150. Second-class postage paid at Livonia, Michigan 48151. Address all mail (subscriptions, change of address, form 3579) to P.O. Box 208, Livonia, Michigan 48151. Telephone 351-3380.
Co-Publishers: Harry M. Hagen, Jr., Philip H. Power
HOME DELIVERY SERVICE
Household _____ per copy, 10¢
Carrier _____ monthly, 10¢
mcflux
MEN'S FORMAL WEAR INC.
WEDDINGS SPECIAL OCCASIONS
FORMAL WEAR FASHIONS BY:
• AFTER SIX • LORD WEST
• PALM BEACH • FORMAL CRAFT
The Ladies of the...
20075 Grand River Ave.
Livonia 48150 (734) 937-0100
(between Southfield and Webster Roads)

Now at Playgirl...

STRETCH YOUR PROGRAM PAYMENTS
There's a new payment plan that makes it easier than ever to belong to Playgirl. Sign up for a 4 or 6 month program and the cost can be paid by the month.
Pay as you lose at Playgirl for as little as 36 cents a day after our \$15 yearly membership. No interest or carrying charges. Drop inches and pounds from your figure while your budget stays right where it is. (Hurry, this offer is limited.)

Playgirl
FIGURE SALONS

Call for free visit and figure analysis

Ann Arbor (East) 975-9100	Pontiac 681-3333
Ann Arbor (West) 964-4777	Southfield 283-5500
Centerline 755-7100	Troy 524-8410
Dearborn Heights 565-2077	Ypsilanti 487-5300
East Detroit 772-8200	Open Monday
Farmington 477-2211	Thru Friday 9 to 9
Livonia 421-5500	Saturday 9 to 4
Madison Heights 545-8600	
Oak Park 545-5222	

semi-annual sale of yarn

sale 99¢ 1.29

WonderKnit Creslan™ acrylic, 4-oz. skein, reg. 1.50
WinKnit Orion™ acrylic, 4-oz. skein, reg. 1.70

And more besides: Winsom Orion™ acrylic, 2 oz., reg. 1.15, sale 99¢. Melody 50% mohair/50% acrylic, 1 oz., reg. 1.15, sale 69¢. Winfant baby weight Orion™ acrylic, 1 oz., reg. 80¢, sale 69¢. Saverflake Orion™ acrylic rayon 1 oz., reg. 85¢, sale 69¢. Assortment of alghan kits, reg. \$9 to \$18, sale 6.49 to 12.99. Save now in Hudson's Art Needlecraft, available at all our stores

hudson's
MONDAY THROUGH SATURDAY: HUDSON'S DOWNTOWN OPEN
9:30 TILL 5:45 P.M., BRANCHES FROM 9:30 TILL 9 P.M.