

'Audience' silent on health plan

After an hour and a quarter, they gave up. No one had any comment, any question, any criticism as the Comprehensive Health Planning Council (CHPC) of Southeastern Michigan tried to conduct a public hearing in Oakland County.

The hearing was scheduled for 4:30 p.m. Monday in the county commis-

sioners auditorium in Pontiac. A few health officials and hospital board members showed up only to listen.

At 5:15 p.m., James Fryfogel, a Southfield MD and vice president of CHPC's executive committee, begged for any comment, got none and departed.

"I HAD EXPECTED some controversy in Oakland County," said Dr. Fryfogel, smiling and shaking his head at the same time.

The topic was CHPC's regional plan for the seven-county area of Oakland, Wayne, Macomb, Washtenaw, Livingston, Monroe and St. Clair.

CHPC has two stated missions: "To develop an integrated system of health care services" for the region and "to develop a health planning process which assures maximum feasible community participation in health-care decision-making."

Legally, CHPC is the agency designated to review all applications for federal grants from the region which fund medical facilities and train personnel.

MOST OF its "summary" state-

ment—which covered four small newspaper pages of solid type—was laced with such terms as guidelines, criteria, linkages, organization, involvement, systems, implementation, goals, objectives, evaluation and the like. No hospital's name is mentioned.

At one point the summary commented, "The array of emergency medical services and resources that exists in southeastern Michigan cannot be called a system." The reason is that "certain integral links and mechanisms are missing. What is needed is the glue that will cement the fragmented pieces together."

Without naming names, cities or departments, the CHPC summary observes that "at least 80 per cent of these patients (entering the emergency medical system) cannot be defined as true emergencies, and another 15 per cent only require a minimum level of emergency care; it is the remaining five per cent who are the truly critically ill and injured."

Other major topics in the plan are environmental health, long-term institutional care, and a for "health maintenance organization" development.

Elks scholarship awards increase

Scholarship awards for 1976 will be the largest in the history of the Elks National Foundation. The number of awards has increased 72 to 998, an increase of \$90,000 over last year's record amount of \$550,000. The total for 1976 is \$740,200.

The 1976 awards include 499 most valuable student scholarships, and 499 scholarships of \$600 each, allocated on a state quota basis. High school seniors are eligible in the competition.

The top six winners in national competition each receive scholarships for four years of study at any accredited university or college in the U.S. The first place boy and first place girl each receive \$3,000 a year for four years. Second place boy and girl each receive \$2,500 a year for four years. While the third place winners each receive \$2,000 a year for four years.

Other awards are for one year each and range from \$1,750 to \$800.

Applications may be made by students in the graduating class of a high school, or its equivalent. They must be U.S. citizens and live within the jurisdiction of the B.P.O. Elks of the United States. Official forms for entries are available at Elks lodges after Dec. 1, and must be filed not later than Feb. 10, 1976 with the Exalted Ruler or Secretary of the Elks lodge in whose jurisdiction the applicant lives.

There are more than 2,200 Elks lodges in all 50 states, Puerto Rico,

Guam, the Canal Zone and Manila, P.I.

A panel will judge applications on the basis of scholarship, leadership qualities and financial need. No consideration is given to race, religion or national origin.

Students who stand the best chance of winning are in the upper five per cent of their class and have a scholarship rating of 90 per cent or better.

A recent informal study of a selected group of past winners showed that all those contacted had earned a college degree. Of 15 winners from the years 1960-65, all had earned at least a master's degree and eight had earned a doctorate. Three were medical doctors. Nine of the 15 graduated with highest honors.

The chairman of the board of trustees of the Elks National Foundation, Past Grand Exalted Ruler John L. Walker of Roanoke, Va., termed the foundation's scholarships "an investment in humanity."

Walker said the names of winners would be announced about May 1, 1976. He urged that requests for additional information be addressed to the scholarship chairman of the various state associations of the Order or the local lodge closest the applicants home.

The Elks National Foundation scholarships have been approved by the National Association of Secondary School Principals.

'Troubled youth' is lecture topic

The Michigan Inter-Professional Association on Marriage, Divorce and the Family is sponsoring a program entitled "Troubled Youth (16 to 21

Years)" on Thursday, Nov. 20, from 7:30-9:30 p.m. at the Northland Inn in the Southfield Rooms.

The program will examine the social, psychological and physiological components of youth involvement with society and the problems encountered. Highlighted will be a consideration of youth involvement with alcohol, drugs and promiscuity.

Speaker will be Derek Miller, MD, associate chairman of the Department of Psychiatry at the University of Michigan Medical Center and director of the Adolescents Center at the University.

For additional information and to make reservations (\$2.00 per person, students \$1.00) please call 953-8840 the office of the association between 9:00 a.m. and 3:30 p.m.

Exclusive Decorator Tile Trivet

SALE

up to 1/3 OFF

6"x6" — \$1.99
8"x8" — \$2.99

Birmingham Arts Originals
369 E. Maple, Birmingham
642-4901

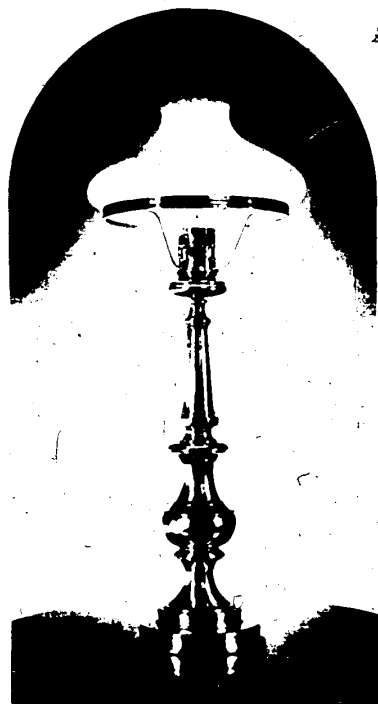


Mighty Mac—Mighty Mac and Jordan Kahn, Ltd., present "Swiftman"—a superbly engineered outercast—that by virtue of its polyester and cotton shell encompasses comfort, practicality, and warmth without weight.



ORCHARD MALL
ORCHARD LAKE ROAD NORTH OF MAPLE
WEST BLOOMFIELD • 851-9444

Open Thursday and Friday 'til 9 Most major credit cards honored



Stiffel sheds light on any decor...

A Stiffel lamp is today's treasure... tomorrow's heirloom. The pride and skill of the artisan is evident throughout their entire collection. Lamp featured is a reflection of simpler times gone by. Antique brass with opal glass shade. Height: 27". Priced at \$146.00. See our quality selection of table, floor and pendant lamps by Stiffel and other notable makers.

Michigan Chandelier Co.
...you'll see us in a better light

BIRMINGHAM 6580 TELEGRAPH AT MAPLE BLOOMFIELD PLAZA
ROCHESTER 435 MAIN STREET AT UNIVERSITY
ANN ARBOR 2177 WEST STADIUM BLVD

Use Your BankAmericard or Master Charge

You Are Invited To Our New Christian Science Reading Room Open House
Friday, Nov. 22, 10 A.M. to 9 P.M.
Saturday, Nov. 23, 9 A.M. to 6 P.M.
Lone Pine Shopping Mall Lone Pine at Orchard Lake Road

WE ALMOST LOST DETROIT

JOHN G. FULLER \$8.95

Out of Print Book Search

This is the documented, true account of what happened on the afternoon of October 3, 1966, when the control panel inside the Enrica farm atomic reactor near Detroit suddenly registered high radiation levels, a sign of critical danger.

Out of Print Book Research

ORCHARD MALL
Orchard Lake Rd. N. of Maple

Telephone Orders Mon., Tues., Wed., Sat. 10-6
Thurs. Fri. 10-9 Sun. 12-5
851-9150

POWER TO THE PEOPLE



\$7.95

Magazine Subscriptions

ORCHARD MALL

Orchard Lake Rd. N. of Maple

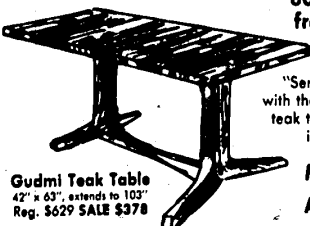
Telephone Orders Mon., Tues., Wed., Sat. 10-6
Thurs. Fri. 10-9 Sun. 12-5
851-9150

Scandinavian Village Presents...

TWO WEEKS ONLY
HOLIDAY CLEARANCE SALE

Dine In Style — Hand Oiled and Rubbed

80% of our Showroom
from 30% to 70% off



Gudmi Teak Table
42" x 63", extends to 103"
Reg. \$629 SALE \$378

"Serve Dinner this Thanksgiving with the warmth and practicality of a teak table. Many sizes and designs in stock to choose from."

MANY TABLES PRICED
AT 40% OFF OR MORE

Visit the Danish Shops'
Pre-Holiday Gift Sale
50% to 70% off Entire Stock

brasch imports, inc

Specialists in Contemporary Furnishings

In Scandinavian Village
in Keego Harbor
3325 Orchard Lk. Rd.
4 Miles N. of Maple Rd.
626-0031

Tues., Wed., Sat. 10-5:30
Thurs., Fri. 'til 9
Sunday 12-3
Closed Monday
Add 3% for Bank Cards