

U-U churches join in homecoming

The Rev. Tracy Pullman, minister emeritus of First Unitarian Universalist Church of Detroit will participate in the church's third annual homecoming at 5 p.m. Sunday, Nov. 23.

The service will be an "ingathering" for Unitarian Universalist congregations in Grosse Pointe, Birmingham, Southfield, Uxiah, Troy, Downriver and Farmington.

With the exception of the Universalist-Unitarian Church of Farmington, which pre-dates First Church, all have their roots in the Detroit church and, in a very real sense, are "coming home."

This year's homecoming theme is "Remember... Renew... Rejoice."

The first part of the service will focus on Unitarian Universalist heritage as the nation celebrates the Bicentennial. The Red Door Players of First Church will present three scenes from George Bernard Shaw's Revolutionary period play, "The Devil's Disciple."

Dr. Pullman, minister from 1950 to

1968 and now living in Boston in retirement, will speak of the dreams, ideas and ideals cherished for generations by liberal religionists, and the availability of these dreams today through renewal of purpose.

First Church's current minister, the Rev. Rudolf Gelsey also will preach.

Also participating in the service will be the Rev. Robert Marshall, minister of the Birmingham Unitarian, and the Rev. Frank D. Gentile, minister of Northwest Unitarian Universalist Church, Southfield.

A combined choir, led by Brenda MacDonald of the Birmingham Church, will sing, with Helen Fairchild Larsson, First Church, at the organ.

The processional and recessional hymns will be original lyrics written to the theme by Rev. Gentile.

Following the church service, the homecoming will be moved to McClellan Hall, adjoining the church on Forest for a harvest celebration and sharing of freshly baked bread, fruit and cheeses.

Mrs. Winkelman gets WSU service award

Mrs. Stanley Winkelman, chairman of the "Understudies," Detroit-area women's committee which raises funds for the Hilberry theatre, is recipient of the Wayne State University Board of Governors Distinguished Service Award.

President George E. Gullen, Jr. presented it to her at WSU's annual president's preview for sponsors, honoring those who contribute financially to the support of the Theatre.

Mrs. Winkelman, who has been chairman of the committee for three years, has expanded the membership and nearly doubled the financial support from the community. This season the committee raised a record-breaking \$40,150, some well over its \$35,000 goal.

The preview, hosted by President and Mrs. Gullen and presented especially for those who contributed to the Theatre this year, featured a performance of George Bernard Shaw's "The Devil's Disciple," comedy-melodrama

about the American Revolution. A champagne reception for guests and the cast followed.

The contribution from the theatre sponsors help to support the 40 members of the Hilberry Theatre's graduate repertory company, who this year have come from 20 states to pursue studies toward master's or doctor's degrees and to participate in the Theatre's intensive training, rehearsal and performance program. The company this year is performing seven productions in weekly repertory over eight months during the University's academic year.

"The Devil's Disciple" officially opens to the public on Wednesday, November 12, at 8:30. Other productions in the 1975-76 repertory include "Of Mice and Men," "Death of a Salesman," "The Lady from Maxim's," "As You Like It," "The Miser" and "The Time of Your Life."

Further information is available from the Box Office.

Milliken tribute set at Israel bond dinner

Governor William G. Milliken will be paid tribute as a "Statesman, humanitarian and champion of Israel" at a Michigan-Israel Bond Dinner of State on Tuesday, Nov. 25.

Participating in the event will be leading figures of the social, political and diplomatic world as well as top representatives from the field of business and banking. The tribute dinner will take place in Adat Shalom Synagogue.

George E. Romney, former governor of Michigan, who was named recently as chairman of the steering committee of the new Joint Business Council established by the United States and Israel governments, will be among the luminaries addressing the gathering.

Israel's Prime Minister's Medal will be presented to Gov. Milliken by Moshe Kori, Minister of Tourism of the State of Israel.

You are invited to attend our Christian Science THANKSGIVING SERVICE

About 350 years ago, our Pilgrim forefathers set aside a day for feasting and prayer, to show their gratitude to God for His goodness and abundance.

Christian Scientists have continued the religious heritage of Thanksgiving. You are invited to join with them in an annual service for expressing thanks to God for the blessings He has bestowed upon us.

10:30 A.M. THURSDAY, NOVEMBER 27
Care for small children is provided. No collection taken.

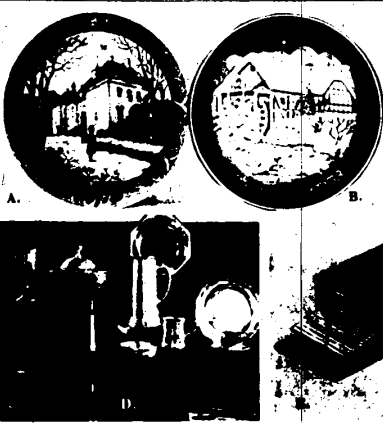
First Church of Christ, Scientist, Birmingham
191 N. Chester

First Church of Christ, Scientist, Franklin-Meadowlake
Maple at Inkster

Yule antiques to be shown

A Christmas antique show is scheduled for 8 a.m. to 4 p.m. on Saturday, Nov. 23, and Sunday, Nov. 24, from 12 noon to 4 p.m. both days. Seasonal displays will include old Christmas ornaments, musical instruments, toys and games.

Participating dealers also will have hand-painted china, art glass, kitchen items, oak furniture and victorian pieces. A special feature will be a collection of majolica, a valuable Renaissance Italian pottery.



ECHO PARK NURSERY SCHOOL & KINDERGARTEN

Enroll now for January classes & Mother-Toddler Program

ECHO PARK
4275 ECHO ROAD BLOOMFIELD HILLS
646-5590

Let Wiggs Be Your Christmas Store

HOLIDAY SAVINGS ON TOWLE STERLING

30% off
25% off
50% off

MADE IN THE U.S.A.

- A. Royal Copenhagen's Christmas Plate 1975. "The Queen's Christmas Resilience" in beautiful Copenhagen blue. Perfect gift for the collector on your list. \$27.50.
- B. Bing & Grondahl 1975 Christmas Plate, made of the finest porcelain, decorated in relief under traditional Copenhagen blue glaze. "Christmas at the Old Water Mill". \$27.50.
- C. Ireland sends its famed Waterford Crystal to Wiggs! Exquisitely hand-cut to reflect the brilliance of glittering occasions. Choose from a delightful collection of Decanters for Dad. Goblets for the Hostess. Blauvelt Barrels for Mom and the new Brandies for everyone. Priced from \$12.50.
- D. Armetale Dinnerware... mugs, tumblers, bone dishes, etc. from our excellent assortment. Armetale captures every bit of the treasured, mellowed glow of traditional pewter, but adds almost incredible durability. Each piece is individually cast in its own sand mold and finished by hand... with slight imperfections that beautify, not mar their appearance... continuing the proud American tradition of metalware excellence that dates back to Colonial times. Individually priced from \$4 to \$60.
- E. Photo "Memory Box" by Holcon in handsome, simulated leather, gold-tooled for elegance. Choice of colors. Holds 200 photos for easy-to-show, easy-to-store. \$12.
- F. Fabulous Farberware "Open Hearth" Electric Broiler/Rotisserie... the perfect combination of open hearth broiling with delicious rotisserie cooking. Extra heavy duty motor turns meat slowly for even self-basting. No spatter, no smoke. 14" x 12" size, reg. \$44.99... SALE \$38.99.

FREE - 4 Napkin Bands with Purchase of 20.00 or more

Teapot, Set of 4... \$10.00
Coffee Pot, Set of 4... \$10.00
Sugar Bowl, Set of 4... \$10.00
Creamer, Set of 4... \$10.00
Teapot, Set of 4... \$10.00
Coffee Pot, Set of 4... \$10.00
Sugar Bowl, Set of 4... \$10.00
Creamer, Set of 4... \$10.00

For a limited time only, you may purchase a 32-piece service for eight (8 teaspoons, 8 forks, 8 knives, 8 salad forks) at 30% off the regular retail price. In addition, all other pieces, including the essential service pieces, are available at 25% off.

If you already own sterling flatware, and are not happy with your pattern, you may trade it in towards the purchase of any active Towle sterling pattern. We will replace it piece for piece or with an equivalent piece. Any sterling flatware will be accepted regardless of brand, age or monogramming. Each piece that you trade in will entitle you to a 50% discount from the sale retail price of the replacement piece you purchase.

WALLACE W. STERLING HOLIDAY SAVINGS! 30% OFF services for 8 or 12.

25% OFF OPEN STOCK

WIGGS

4080 TELEGRAPH RD. (at Long Lake Rd) BLOOMFIELD HILLS
open Mon., Thurs. & Fri. 10-6 • 644-7770