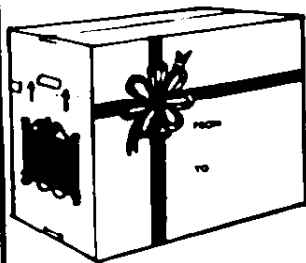
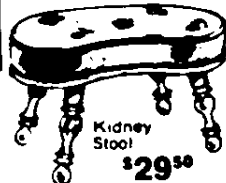


# Great "FINDS" in PINE!



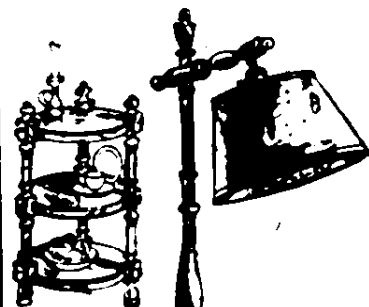
Each piece shown is individually wrapped for safety and convenience in an attractive, easy-to-carry gift carton



Kidney Stool \$29<sup>95</sup>



Round pine floor lamp \$49<sup>95</sup>



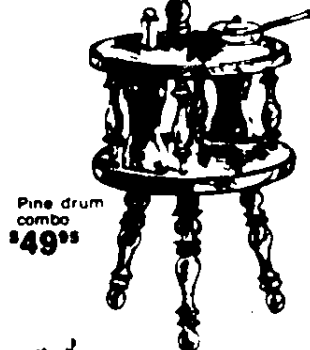
Three-tier plant stand \$43<sup>50</sup>



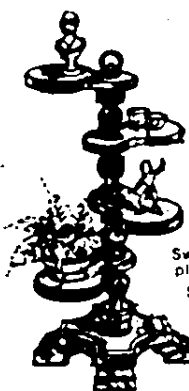
Smoker \$24<sup>95</sup>



Swivel shell plant stand \$39<sup>50</sup>



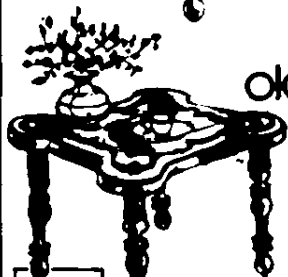
Pine drum combo \$49<sup>95</sup>



Swivel shell plant stand \$39<sup>50</sup>

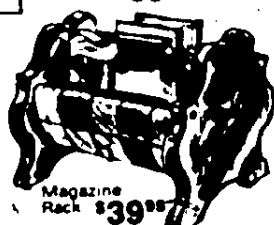
Unique Christmas gifts bubbling with old fashioned charm

For that special someone, beautiful Colonial design occasional furniture is sure to be a welcome gift. These charming pieces bring a warm look to any room with their bold turnings, a lustrous pine tone and the exclusive Protectolac® finish that resists stains and stays beautiful with just wipe-clean care



Set of three stack tables \$69<sup>95</sup>

Patchwork Stool \$29<sup>50</sup>



Magazine Rack \$39<sup>95</sup>

• Master Charge • BankAmericard



## Colonial House

19832 Mullichoate (S. Hwy) near Evergreen

KS 2-7888 Open Monday, Thursday & Friday Evenings '88

(Continued from Page 54)

skates for free style and dance. Speedskaters have indoor and outdoor skates. In hockey, goalies use skates that are made differently than those of other players.

In Hans Brinker's day, Dutch children often just strapped wood skates onto their shoes. Arch support wasn't a concern. That's unfortunate, said Ms. Blatch.

"In the case of figure skates," she said, "look for leather or vinyl boots with blades that are screwed into a leather sole. They provide the best support. Avoid blades that are riveted on."

Ms. Blatch added, "If you want good fit, go to a place that specializes in ice skates. I recommend sporting goods stores or pro shops at ice rinks, not department or discount stores. It astounds me how well some children do on skates with absolutely no arch support."

A good pair of stock figure skates costs between \$30 and \$50 for children and between \$40 and \$60 for adults, she said.

Parents should shun double-runner skates for their children, said Mike Walden, long one of the Detroit area's leading authorities on speedskating and bicycle racing.

"You can't learn how to skate using double runners," Walden said. "They just slide on ice. They don't strengthen your ankles any."

"I'd say children four and five can learn how to skate with single-runner skates. We've got some even younger, but they're exceptionally coordinated."

Avoid skates that pinch your toes, advised Walden.

"You've got to be able to pull the boot right over your foot for tightness," he explained. "You also need toe clearance and some lacing room, but skates generally should be right to size."

Good hockey skates cost between \$20 and \$30 a pair, Walden said and better built ones start at \$40 a pair and range up to \$100 a pair.

"The more active your child," he said, "the more you should consider going into better built skates."

"Normally, you should be able to get three or four years of use from better built skates. But if your child outgrows them after one year, you may be able to sell the skates for \$15 or \$20. So it costs you only \$15 a year to equip your child with skates."

Stock figure skates that cost \$40 a pair new will bring at least \$10 or \$15 used, Ms. Blatch said.

Both Walden and Ms. Blatch noted:

- That they prefer to see children and adults in a good pair of

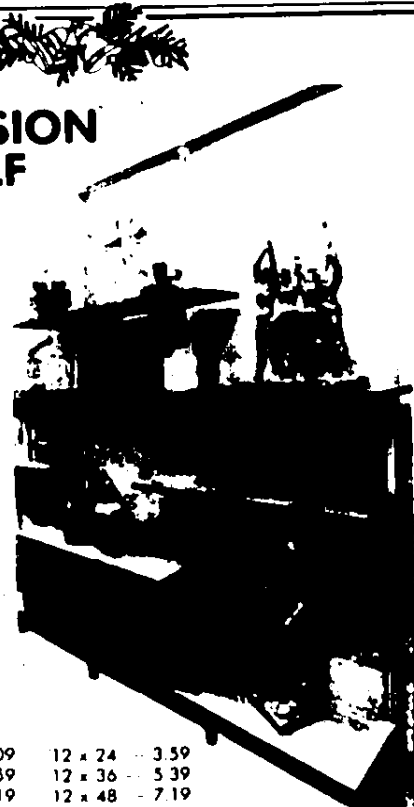
(Continued on Page 59)

## SPRING TENSION POLE & SHELF SYSTEM

Now you can put up your own shelf system with tension poles that may be used against a wall or between 2 rooms as a room divider. Solid extruded aluminum poles are only 19.95 each.

Shelves of furniture quality melamine surface are fully edge banded. They have a durable surface stronger than wood or vinyl. The following sizes are available in walnut, white, or butcher block.

8 x 24 - 2.49	10 x 24 - 3.09	12 x 24 - 3.59
8 x 36 - 3.69	10 x 36 - 4.59	12 x 36 - 5.39
8 x 48 - 4.89	10 x 48 - 6.19	12 x 48 - 7.19
8 x 72 - 7.39	10 x 72 - 9.29	12 x 72 - 10.79



## THE SHELF SHOP

14227 Telegraph  
Bavarian Vill. Ctr.  
Phone 535-4560

24400 Harper  
St. Clair Shores  
Phone 775-6128

1705 S. Woodward  
Birmingham  
Phone 647-5580