

Farmington Hills

A community you can LIVE in!

Welcome to Farmington Hills, the 29th Best Place to Live in America as rated by Money Magazine in 2006. Incorporated in 1973, the City of Farmington Hills quickly grew from its rural roots, and today offers a unique blend of historic charm, international diversity, and cutting-edge commerce. The city boasts unsurpassed office and light industrial sites, and exceptional public service. The city is comprised of 33.4 square miles and is located within 30 minutes of two airports, Detroit and Ann Arbor. Farmington Hills has been nationally recognized for its innovative and highly successful Youth and Families Program which serve the needs of middle school children during after-school hours. The City has over 500 acres of open space designated specifically as public use parks. Founders Sports Park offers a variety of sports recreation including a dual ice rink. Heritage Park offers hiking and nature study trails, and weekly summer concerts.

Local Government

Mayor	
Jerry Ellis	(248) 871-2500
Manager	
Steve Brock	(248) 871-2500
Clerk	
Kathy Dornan	(248) 871-2410
www.ci.farmington-hills.mi.us/	

Public School Enrollment

Does not include public school academies

School District	Year	Enrollment
Clarenceville	2008	1,922
Farmington	2008	12,216
Walled Lake	2008	15,654

2007 Tax Rates

School District	Homestead	Non Homestead
Clarenceville	\$33.14	\$50.51
Farmington	\$37.98	\$47.60
Walled Lake	\$34.47	\$50.59

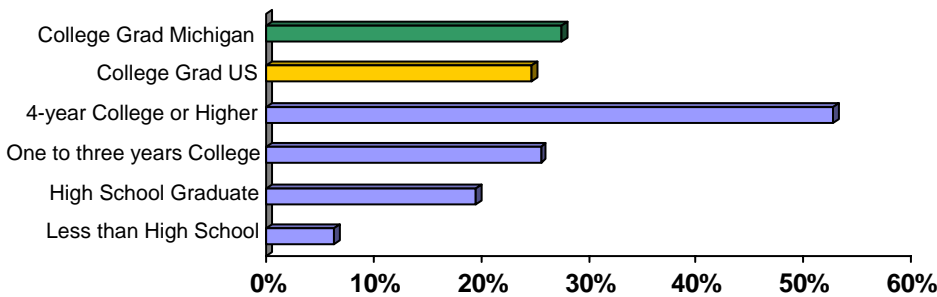
Private Schools

Echo Park, Hillel Day, The Internat'l School, The Maria Montessori Ctr, Mercy High, St. Fabian, Steppingstone School, St Paul's Lutheran, Childrens Place Montessori

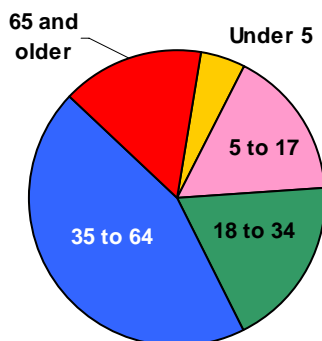
Colleges and Universities

Oakland Community College (Orchard Ridge), Wayne State University Extension, Wm Tyndale College

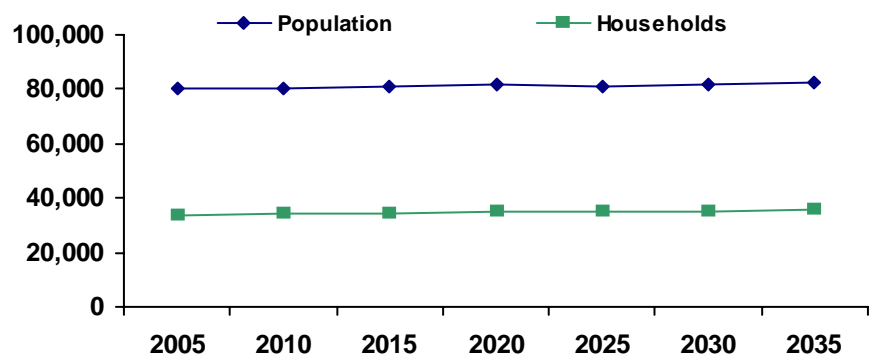
Educational Attainment of People Over 25 Years of Age



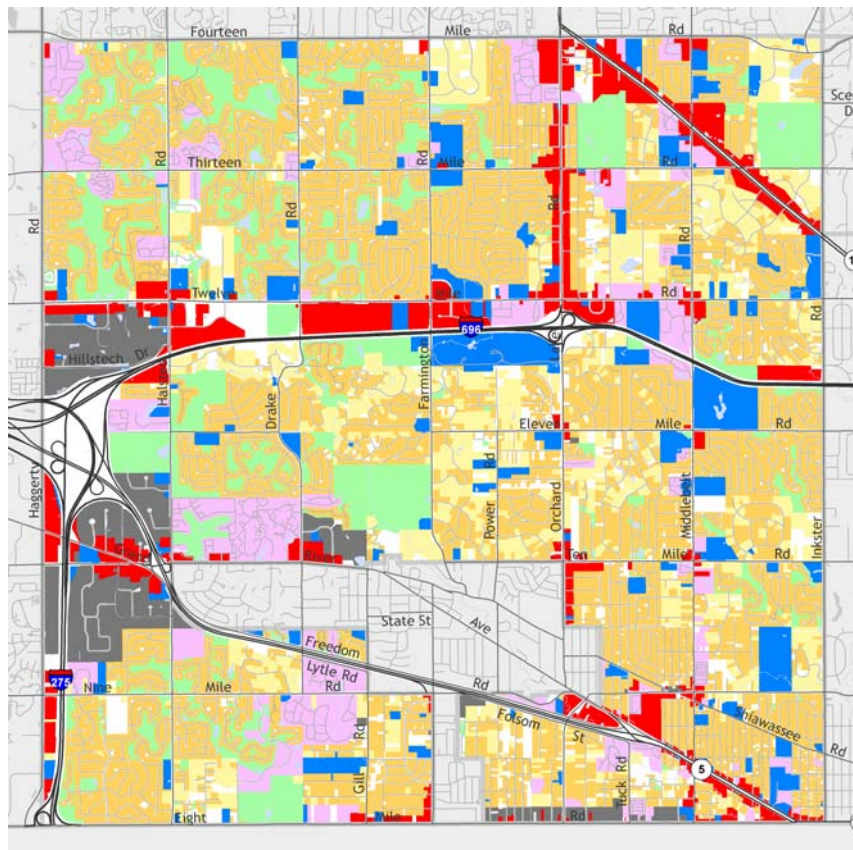
Population by Age



Population and Household Growth

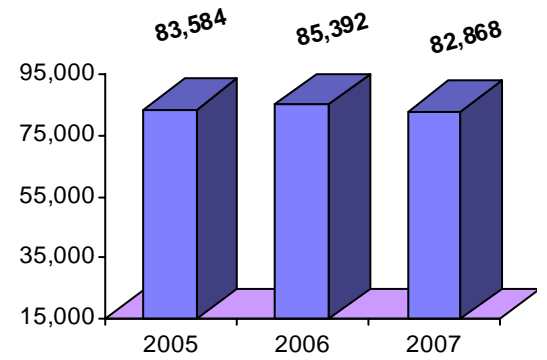


Farmington Hills



The information provided has been compiled from recorded deeds, plats, tax maps, surveys, and other public records. It is not a legally recorded map or survey and is not intended to be used as one. For more detailed land use information, go to <http://www.oakgov.com/luz>

Median Household Income



Source: Claritas

Housing Sales

2008 # of Sales	820
2008 Median Sales \$	\$167,500
2008 Avg DOM	133
2007 # of Sales	715
2007 Median Sale \$	\$215,800
2007 Avg DOM	140
2006 # of Sales	761
2006 Median Sale \$	\$225,000
2006 Avg DOM	113

Top Employers

Rank	Company Name	Industry
1	Zieger Health Care Corp. (Botsford)	Healthcare
2	Robert Bosch Corp.	Automotive engineering and testing
3	Farmington Public School District	Primary education
4	Quicken Loans	Lending Services
5	Cengage Learning Gale	Database information providers
6	Chrysler Financial Services	Financial services
7	Aditya Birla Minacs	Customer Relationship Management
8	TRW Automotive Holdings Corp.	Automotive manufacturing
9	Nissan Technical Center NA Inc.	Automotive engineering
10	ACO Hardware	Hardware warehousing/distribution
11	Amerisure, Inc	Insurance agencies and brokerages

Manufactured Housing

Year	# of Parks	# of Units
2003	8	592
2005	8	592
2007	7	573

Source: SEMCOG

