

Cisler appointed to Northwestern impact study group

By MARY LOU CALLAWAY
Walker Cisler, retired board chairman of Detroit Edison Co. and a resident of Grosse Pointe, has been named chairman of the Northwestern Highway environmental impact statement committee.

"He was suggested by SEMCOG (Southeastern Michigan Council of Governments) because he is neutral and has stature in the region," Michigan State Highway Department manager of the metropolitan planning section in Lansing, Edward Kazenko, said.

Eleven citizen groups will select representatives to serve on Cisler's committee, which will begin meetings very soon, Kazenko said.

In addition, local, county and area governmental units will have representatives on the technical advisory committee meeting with the citizens' group.

"MEETINGS WILL probably be held once a month in the communities concerned with the proposed highway extension. As for it, the consultant study may take about 12 months to

complete. A draft environmental impact study will be prepared and sent to the Federal Highway Commission before public hearings.

"A final draft then must be reviewed by EPA (Environmental Protection Agency) and the Federal Department of Transportation.

"It may be two years before everything is complete," Kazenko said.

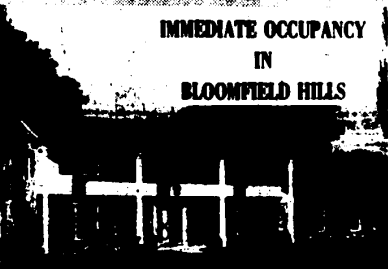
The proposed extension for 9.3 miles from Telegraph Road in Southfield northwest through West Bloomfield Township to connect with I-275 in Commerce Township is being opposed by MCCAN (Michigan Citizens Concerned About Northwestern), and citizen groups from Franklin Village, Farmington Hills and West Bloomfield and the Detroit Audubon Society and East Michigan Environmental Action Council.

IN THE MEANTIME, Gov. William G. Milliken's order to cease acquisition of rights-of-way along the proposed highway route stands and only severe hardship cases will be dealt with until a build or no build decision is made, Kazenko said.

Calling the Oakland County Road Commission's appeal to the Michigan Supreme Court for a ruling on its contract with the highway commission to build the highway "very delicate," Kazenko said the court has not yet indicated whether it will hear the case, which was turned down by the Michigan Court of Appeals last year.

"If the environmental impact study shows we should not build the highway, it will not be built," Kazenko said.

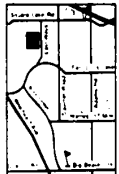
In the three years since the highway extension was first challenged, the quoted price tag has gone from \$53 million to an estimate as high as \$100 million.



IMMEDIATE OCCUPANCY IN BLOOMFIELD HILLS

SPACIOUS LUXURY HOMES LIVE IN BLOOMFIELD HILLS

DISCOVER NORTH BLOOMFIELD HILLS AND MOVE UP TO A NEW LUXURY LIFESTYLE BEYOND COMPARE. BE A PART OF A NEW COMMUNITY DESTINED TO ENHANCE IN VALUE BECAUSE OF ITS PRIME LOCATION AND OVERALL PRESTIGE ENVIRONMENT. MASTER PLANNED TO EXCLUSIVELY INCLUDE 96 SCENIC SITES. NORTH BLOOMFIELD HILLS IS THE BEST OF TWO WORLDS. SET ON ROLLING HILLS GRACED WITH AGE-OLD TREES, IT OFFERS A MAGNIFICENT SETTING. YES IS CONVENIENT TO ALL THAT'S IMPORTANT. EXCELLENT BLOOMFIELD HILLS SCHOOLS AND OAKLAND COUNTY'S CULTURAL FACILITIES.



PRICED FROM \$89,950

Models Open Daily 1 to 8 p.m. (closed Thursdays) 2836 Severn Lane



Rodney Lockwood & Company COMMUNITY BUILDERS AND DEVELOPERS SINCE 1940 7420 E. Livestock Ave., Birmingham, Mich. 48008 Model #1: 2760 Office #484-6024

Take Woodward Avenue to Long Lake Road, then one mile to Eastwawa Road, then north 1/2 mile to model.

Thom McAn Play it safe with a Safety Toe

Work safely, walk softly and play comfortably in these long-wearing steel "safety toe" boots from Thom McAn. Save your hard-earned money, too, at this special low price.



- Steel "safety toe" that exceeds OSHA requirements.
- Top grain cowhide uppers
- Neoprene welting
- Durable crepe soles

Special \$1500 Reg. \$18.99

Thom McAn

This store only: Detroit, 21651 W. 8 Mile Rd.

Teacher hired as dog warden

Southfield Township has hired two animal wardens and will officially institute its animal control program in February for Beverly Hills, Franklin and Bingham Farms.

Kathleen Fitzgerald, 28, of Auburn Heights and Dennis Crane, 30, of Hazel Park will be on duty after completing four weeks of training with the Oakland County Animal Control and the City of Southfield's Animal Control Department.

Township Clerk Eleanor McGee said one of the first projects of the new program will be to encourage the licensing of all dogs. She said a door-to-door survey to locate unlicensed dogs is planned.

Licenses can be bought for \$3 each through March 30 at the Southfield Township office in the municipal building at 15500 Thirteen Mile Road in Beverly Hills. Licenses bought after that date will be \$6.

The animal control program is expected to cost \$43,600 for the first year. Salaries for the wardens and a clerk to handle the paper work—estimated at \$23,000—will come from federal money available to the township under the Comprehensive Employment and Training Act of 1973 (CETA).

The money to equip and train the employees and for operational expenses will come from township federal revenue sharing money.

The wardens will work in conjunction with the Franklin police and the Beverly Hills public safety departments.

Miss Fitzgerald has a degree in education from Michigan State University and taught at Grosse Pointe Academy in Grosse Pointe.

Crane studied business administration at the University of Detroit, has served in the Air Force and was employed as a toolsetter for General Motors.

'Beginnings' closes due to remodeling

"Beginnings", a store for plants and decorator accessories in the Franklin Shopping Center at Fourteen Mile and Middle Belt, will be closed for three months while the center is being remodeled.

The shop is located in Farmington Hills, just south of the West Bloomfield Township border.

Meanwhile, owner Doug Lawrence has opened a second store at 1577 Opdyke, Bloomfield Hills.

The store specializes in melding plants and supergraphics. West Bloomfield resident Carre Brockman is the graphics artist.

LEVOLOR RIVIERA BLIND

Just blinds 559-2117 FREE ESTIMATES

20% OFF

Free Installation

You own your own land

\$55,950.00

you want your own house

You own your own land and you want your own house — not one like dozens of others.

At Allstate Homes we know that the way you live is a personal statement — one which reflects your own good taste and your own special needs.

We can show you hundreds of floorplans in every style — Mediterranean, Contemporary, Tudor. But our models are meant to give you the architectural basics. We want to work with you to create a home that is as unique as your lifestyle demands.

That's why at Allstate, every home we build is a custom home — built to your design.

Allstate Homes

333 E. Grand River Brighton 227-2440
3881 Highland Road Pontiac 681-5571

FINAL WEEK JANUARY CLEARANCE SALE

SAVE during our greatest January Clearance Sale ever. Choose from name brands you can trust — Bigelow, Lees, Wunda Weave, Barwick, Alexander Smith, Cabin Craft and many others. Save on Shags, Plushes and Twists.

IF IT'S IN STOCK . . . IT'S ON SALE!

You'll get the best deal we've ever made!

ODD ROLL CLEARANCE GROUP Many roll balances, remnants, roll ends. Really Marked Down Low. From

\$3.95 sq. yd.

SAXONY NYLON SHAG Here's your chance to really save. The popular length shag in Nylon pile. Big color selection

\$4.95 sq. yd.

Let us PRE-MEASURE Your Rooms

By pre-measuring we can have this information on file at the time of your visit. Also, we'll bring you Carpet Samples to your home in all the color combinations you find it difficult to come to our "look at me" showroom. Call for an appointment today! No obligation, of course.

476-8360

Rite CARPET

Visit Our New Store Outside The Brighton Mall 8497 W. Grand River 1-227-1314

"You'll Like Our Style" 7 Mile & Middlebelt Across from Livonia Mall 476-8360

• BankAmericard • Master Charge • Bank Financing

CRANBROOK PLACE APARTMENT HOMES

SHOWPLACE FOR SUCCESSFUL PEOPLE

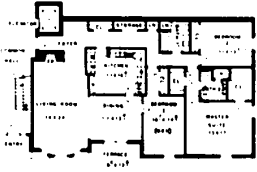
The spacious interiors of our unique condominiums were designed to pamper those successful people who are accustomed to the finer homes in the Birmingham Area, but desire the convenience and freedom of luxury condominium living. Successful people like to be able to travel and vacation secure in knowing a professional manager will take care of their home. You'll be delighted to see how all those large favorite pieces of furniture will easily fit in the generous room sizes at Cranbrook Place.

Test drive the convenience and security enjoyed by residents of Cranbrook Place — with the press of a button the electronic hand-crafted wrought iron entry gates will open to allow your entry to the brick-walled estate thru the stately Gatehouse. Drive to your garage where the press of a button in your car opens your automatic garage door, step from your car secure from the elements and take the automatic elevator to your home.

OPEN DAILY 1-8 P.M. (closed Thurs.)

18301 W. 13 Mile Rd. (Just West of Southfield Rd.)

RODNEY LOCKWOOD & CO. Builders Since 1940



2 and 3 bedrooms

\$49,990-\$69,990