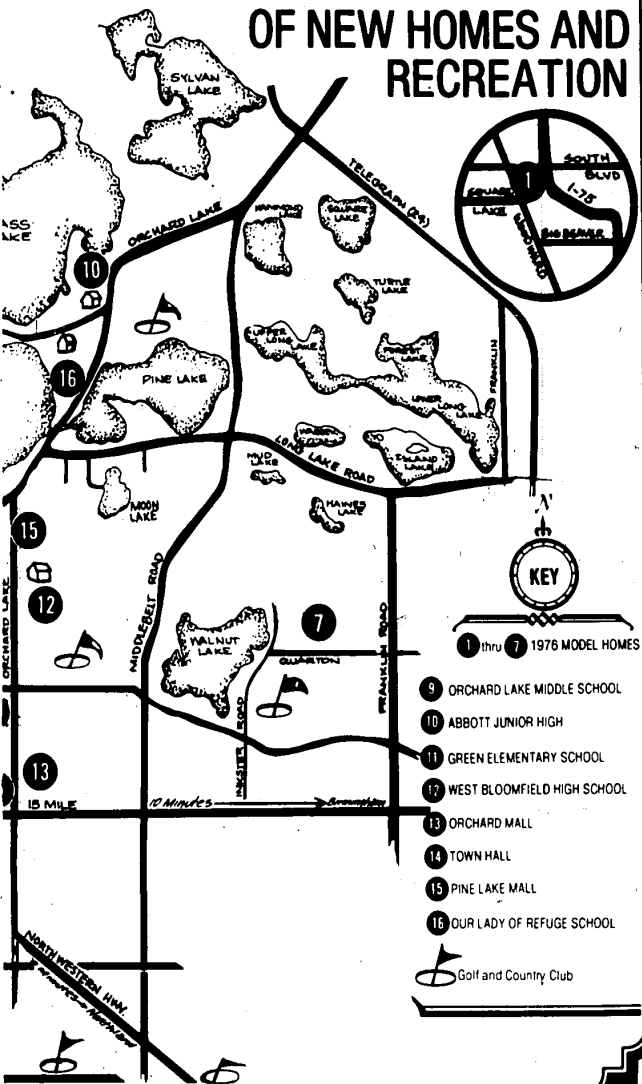
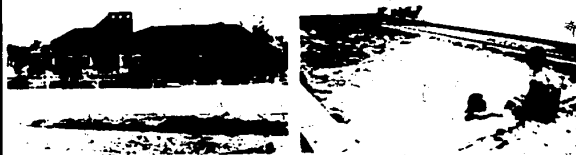


# **ORTH AREA** **G FESTIVAL**

## **OF NEW HOMES AND RECREATION**



## **FAMILY MEMBERSHIPS AVAILABLE AT POTOMAC CLUB**



Enjoy Total Family Recreation Featuring:

- TWO POOLS (INDOOR AND OUTDOOR)
- POOL PARTIES, CARD PARTIES, DANCING
- SAUNA, EXERCISE ROOM, TABLE TENNIS

**Lifetime & Annual Memberships**

**Family Memberships As Little As \$17.50 per month**

Planning a Party?  
 Pool & Room Rentals Available  
 MANAGEMENT BY  
 COMMUNITY MANAGEMENT CO.



HOURS 12:00-5 P.M.

TUESDAY THRU SUNDAY

851-4469



### **THE CHATELAIN MARQUIS**

From \$108,000  
 To \$117,000

3450 square feet of elegance. Enjoy your own custom home on the building site of your choice.



Only one model of the many available custom homes Bloomfield Square—Priced from \$85,000.

### **BLOOMFIELD SQUARE**

Building Construction Co.



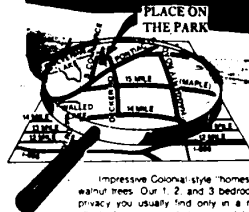
Model Open  
 1-6 Seven days weekly

Located 1/4 Mile West of Franklin  
 North of Quail Road  
 Sales By Green Lake Realty  
 851-8666



Model Phone  
 851-1027

**art buffs choose**



### **PLACE ON THE PARK CONDOMINIUMS**

Oakland County Lakes area

Impressive Colonial style homes nestled amid towering pines and stately walnut trees. Our 1, 2, and 3 bedroom condominiums include the quality and privacy you usually find only in a more costly community. Features include attached garages, central air, complete kitchen appliances and full basements with most townhouses. Place on the Park is ideally located with 39 lakes within a 5 mile radius. 2 miles from proposed I-275 and close to schools and shopping. IMMEDIATE OCCUPANCY. Priced from \$25,900 \$34,500

MODEL OPEN:  
 DAILY 1-5  
 SATURDAY 12-5  
 SUNDAY 12-7  
 (Closed Thursday)  
 Please Call...

by: ROTTMAN BUILDING COMPANY

624-7221

**THOMPSON-BROWN'S**