

16 Candidates For Schoolcraft At-Large Trustee Posts



Charles Chandler

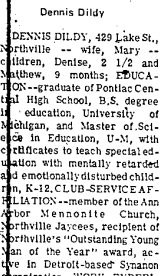


Dr. Robert Geake

CHARLES W. CHANDLER, 1410 Cardwell, Livonia-wife, Elaine-children, Catherine and Carolyn. EDUCATION-Pontiac schools and Bloomington, Ill. High school, B.S.M.E., University of Utah, 1956; J.D. (law), Detroit College of Law, 1966. CLUB-SERVICE AFFILIATION-Member of the State Bar of Michigan, Michigan Patent Law Association, Michigan Society of Professional Engineers, former Naval officer, member of St. Genevieve parish, Buckingham Village Civic Association. WORK EXPERIENCE-patent attorney.

STATEMENT regarding problems at Schoolcraft College: A continuing problem facing the college is one of its facilities keeping pace with the school population. A potential problem is related to the confidence in the college by the community. In view of the campus unrest, carrying at other institutions, even in Detroit.

I would seek to ensure that the college continues to offer quality facilities at a reasonable cost. Furthermore, I would promote a policy of firmness, not compromise, in dealing with illegitimate demands, should such occur.



Dennis Dildy

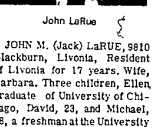
DENNIS DILDY, 429 Lake St., Northville-wife, Mary-children, Denise, 2 1/2 and Matthew, 9 months; EDUCATION-graduate of Pontiac High School, B.S. degree in Education, University of Michigan, and Master of Science in Education, U-M, with certificates to teach special education with mentally retarded and emotionally disturbed children, K-12. CLUB-SERVICE AFFILIATION-member of the Ann Arbor Mennonite Church, Northville church, recipient of Northville's "Outstanding Young Man of the Year" award, active in Detroit-based Synanon organization. WORK EXPERIENCE--teacher at Hawthorn Center, part-time director of probation in the 12th District Court serving Plymouth, Northville and Canton Township. Former public school teacher.

STATEMENT regarding problems at Schoolcraft College: Serve in whatever his duties may require and demand as well as suggest, in force seeing the responsibilities in strengthening the Junior College concept; Promote the expansion of the college of courses offered at Schoolcraft, not only at the college prep level, but also further expansion of vocational and technical training programs as demands indicate and the changes allow; Help see that Schoolcraft retains and acquires the finest faculty staff; To open and clarify communications between faculty, students, administration and the board as well as the community at large.

STATEMENT regarding problems at Schoolcraft College: I have been a resident of the Schoolcraft district for seven years, longer than the college has been in existence. I believe that the college and its board will face a number of critical issues in the years immediately ahead in which knowledgeable leadership will be of prime importance. These issues include:

1. Operation of a well managed, efficient school in the face of rising costs and increased pressure on the tax dollar.
2. Retention and recruitment of a qualified teaching staff in the face of keen competition from other colleges and universities throughout the state;
3. The retention and recruitment of a qualified teaching staff in the face of a rapidly expanding student enrollment;
4. Maintenance of an orderly and decorous campus in the face of a nationwide student activist movement. I believe that the proper role of a student is to study and to "earn, not burn."

I believe that academic freedom means the right of discussion, debate and dissent, but does not extend to the "right" to engage in tactics which disrupt the proper functioning of the college. I believe that the college must make efforts of the majority of students to carry on their studies. I believe that obscene language, drug abuse, and pornography have no place in any tax-supported institution of higher learning, least of all in a community college.



John LaRue

JOHN M. (Jack) LARUE, 1910 Blackburn, Livonia, Resident of Livonia for 17 years, wife, Barbara, Three children, Ellen, Robert, and David, 23, 18, and 16, a freshman at the University of Michigan. EDUCATION-Graduate of Ann Arbor High, B.S. University of Michigan in 1937, M.S. in Physics, University of Michigan in 1938. Graduate work in physics at Oak Ridge School of Reactor Technology, 1960-61. EXPERIENCE--MIT Radiation Laboratory, 1941-45, Research Correll, Inc., 1945-49, Bendix Corporation, 1949-present. COMMUNITY ACTIVITIES--Steering committee for Livonia Chamber of Commerce conference on "Livonia Needs and Goals." Citizens Advisory Committee for City of Livonia. Livonia Public Schools: Citizens committee for planning Franklin High, Extended school study committee, citizens committee for planning Franklin High, Chairman of steering committee and chairman of operating budget committee of Citizens Study Group. Citizens Advisory Committee for Better Human Relations.

STATEMENT regarding problems at Schoolcraft College: The college's problem is development of effective communication channels permitting community, students and faculty to contribute their ideas regarding the operation and future planning of the College.

Open effective communications are essential if the College is to meet the high-quality educational needs of both college students and adults, to allow inquiry and discussion, and to become the cultural center for the community. I would evaluate the issues in making a responsible judgment.



Walter Nevill

WALTER R. NEVILL, 32970 Florence, Detroit City wife, Helen - children, Brad, graduate of Garden City High School, now Freshman at Kalamazoo College, Suzanne, sophomore at Garden City West. EDUCATION--graduate of Redford Union High School and attended Western Service Institute. CLUB-SERVICE AFFILIATION--currently second-term president of Garden City West Senior High School PTA, past two-term president of Garden City PTA Council, member of lay study committees relating to school millage issues, curriculum and facilities, former scoutmaster and Garden City district committee member, former member of Redford Township Library Commission, Member of Union No. 1 Masonic Lodge, Detroit, Mackinac Chapter, Sherris Club, National Rifle Association, Associate member of Western Wayne County YWCA, sponsor of West High School Archery Club, wife president of Western Wayne County chapter of Citizens for the Advancement of Public Education (CAPE). WORK EXPERIENCE--employed for Ford Engineering and Research Center.

STATEMENT regarding problems at Schoolcraft College: The problems at Schoolcraft College are manifest but not insuperable. It would be less than realistic to presume that there are pat answers. Communication--expression and pornography have no place in any tax-supported institution of higher learning, least of all in a community college.

STATEMENT regarding problems at Schoolcraft College: I am elected to the Board of Trustees. I would advance programs of technical and professional education geared to career employment, encourage professional career counseling, promote greater community involvement in major policy decisions and seek out and implement various alternatives for strengthening the integrity and prestige of the office of the President at the college.

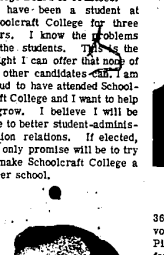


John Patrick O'Brien

JOHN PATRICK O'BRIEN, 29721 Hawthorne, Livonia, Native of Pittsburgh, Pa., has resided in Livonia for 16 years. Recent graduate of Schoolcraft College. EDUCATION--M.A. in Education, University of Michigan, 1959. Graduate work in physics at Oak Ridge School of Reactor Technology, 1960-61. EXPERIENCE--MIT Radiation Laboratory, 1941-45, Research Correll, Inc., 1945-49, Bendix Corporation, 1949-present. COMMUNITY ACTIVITIES--Steering committee for Livonia Chamber of Commerce conference on "Livonia Needs and Goals." Citizens Advisory Committee for City of Livonia. Livonia Public Schools: Citizens committee for planning Franklin High, Extended school study committee, citizens committee for planning Franklin High, Chairman of steering committee and chairman of operating budget committee of Citizens Study Group. Citizens Advisory Committee for Better Human Relations.

STATEMENT regarding problems at Schoolcraft College: The college's problem is development of effective communication channels permitting community, students and faculty to contribute their ideas regarding the operation and future planning of the College.

the refusal of the two sides to listen to one another. This leads to a reactionary attitude by both sides, and eventually to a communication breakdown between the student body and the policy making board of the college is what I believe I can best be doing.



Jerome Pikulinski

Jerome PIKULINSKI, 33496 Clyde, Livonia, wife, Yvonne, Four children - Raymond, 6, Stark School; Christopher, 5, Stark School; Paul, 3, and Catherine Anne, 18 months; EDUCATION--graduate of U-High School where he was a Latin-Greek Scholar; Received B.S. Industrial Management from University of Detroit and M.Industrial Relations from U-D; EXPERIENCE - Three years with Ford Motor in personnel and research. City of Detroit, training director in several programs. Deputy Director of the Michigan Department of Labor with headquarters in Lansing.

STATEMENT regarding problems at Schoolcraft College: I am elected to the Board of Trustees. I would advance programs of technical and professional education geared to career employment, encourage professional career counseling, promote greater community involvement in major policy decisions and seek out and implement various alternatives for strengthening the integrity and prestige of the office of the President at the college.

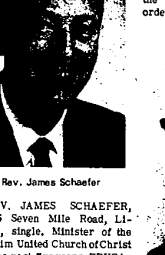


Kenneth Robiner

KENNETH R. ROBINER, 29886 Linda, Livonia-wife, Linda, EDUCATION-Munford High School in Detroit, Ohio Northern University, 1961, Detroit College of Law, 1965, CLUB-SERVICE AFFILIATION-Michigan State Bar Association, American Bar Association, American Judicial Society, past president, Alpha Epsilon fraternity, Kappa chapter; WORK EXPERIENCE-teacher, Detroit public schools, 4 1/2 years; practicing attorney since 1965.

STATEMENT regarding problems at Schoolcraft College: For any college to function properly, it must have rules and regulations to follow which must be workable and enforceable. The basic goal for higher education at the institution level must be the preparation of its students to function in their chosen professions. The following are some overall suggestions: 1. Careful selection of instructors to be sure they fit into and can function within the rules of the institution. 2. Enforcement of all regulations of the institution and expulsion of those who cannot live within the framework of the institution regulations. 3. A system of dialogue between students and university for changes. However, no demands tolerated, only suggestions and negotiations, with any

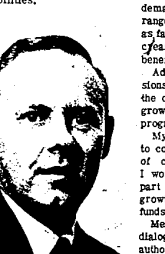
action taken on the suggestions being left to the discretion of the administration, not the students.



Rev. James Schaefer

Rev. JAMES SCHAEFER, 35075 Seven Mile Road, Livonia, single, Minister of the Pilgrim United Church of Christ for the past five years. EDUCATION--Public schools in Minneapolis, Minn. Attended University of Minnesota, B.A. from Hamline University in St. Paul, B.D. from University of Chicago and Chicago Theological Seminary. EXPERIENCE--Guidance of young adults in Chicago, Duluth and Cannon Falls, Minn., Wyandotte and Livonia in Michigan. RESPONSIBILITIES--United Church of Christ, immediate past moderator of the Detroit Metropolitan Association, UCC, and presently a member of the Association Board of Trustees and chairman nominating committee; member Cabinet of Michigan Conference, OCC; delegate, General Synod, UCC, and member of Livonia Citizens for Better Human Relations.

STATEMENT regarding problems at Schoolcraft College: Problems at Schoolcraft College are not really problems as much as the challenge of the future. I sense a need for doors to open and honest communication to take place between faculty, students, administration, and community. Working together, using all these resources, learning opportunities can be developed that will make our college an exciting part of northwest Wayne County. As a board member, I would want to help realize these possibilities.

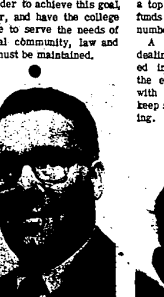


Calvin Strom

CALVIN STROM, 15786 Blue Sky, Livonia, Resident of Livonia for 12 years, wife, Carol, Four children- Linda, Susan, Margaret and Eric. EDUCATION--Graduate of Coolidge High in Detroit, B.S. in Mechanical Engineering, University of Michigan, 1957; Certificate in secondary education, mathematics, University of Michigan, 1958. Graduate work-University of Michigan, 1959. University of Detroit, 1962; MA in Mathematics Education from Wayne State in 1965. EXPERIENCE-Ford Motor Co., 1952 - present. Personnel and organization staff, central office staff personnel research analyst. AFFILIATIONS--Alpha Pi Tau, Sigma and Tau Beta Pi, national engineering honoraries. Awarded Sloan Foundation Fellowship. University of Michigan and National Science Foundation scholarship to Wayne State University. CIVIC INVOLVEMENT--Vice moderator, Board of Deacons, St. Paul's Presbyterian Church, group chairman, YMCA capital drive. WORK EXPERIENCE- Taught Thurston High, 1958-1962; taught Cleary College, 1960-61, worked in Diesel dynamometer laboratory in 1957; worked summers for Ford Motor Co. in engineering research staff, 1955, and 1956.

STATEMENT regarding problems at Schoolcraft College: Increasing alienation between students, teachers and administrators underlies the critical problems facing the Board of Trustees of Schoolcraft College. The problems are declining morale, increasing warring and erosion of legal operating authority.

As a member of the board, I would initiate grievance handling procedures to permit representative groups of students, teachers, and administrators to guide decisions regarding the school's operation.



Joseph Sullivan

JOSEPH E. SULLIVAN, 9050 Hanlon, Livonia-wife, Therese-children, Joseph, 12, attends Elwell Junior High School, Mary, 11, Robert, 9, John, 8, all attending St. Michael's School, and William 2. EDUCATION - graduated from Whitfish Bay, Wis. High school, attended Marquette University, Milwaukee, B.S.E.E., Purdue University, 1949; M.S. (math) University of Michigan, 1952. CLUB-SERVICE AFFILIATION-Member, Sigma Xi, Livonia Junior Baseball League, Senior Member, IEEE; vice-chairman, Science and Electronics Group, AEE Michigan Section, 1961-62; Institute of Navigation/Science Research Club of the University of Michigan, Engineering Society of Detroit. WORK EXPERIENCE-lecturer in electrical engineering at U-M, 1957 now at Dearborn campus, 1963-1969. Electrical engineer, Montana-Dakota Utilities, 1949-51; radar and communications instructor (civilian), U.S. Air Force, 1951; Electrical engineer, Bureau of Reclamation, 1951, engineer, Sperry-Grynscope, 1951-57.

STATEMENT regarding problems at Schoolcraft College: In the next several years Schoolcraft College will almost inevitably be faced with the challenge of meeting student demands and dissent on a wide range of pertinent topics as well as faculty requirements for increased compensation, and benefits of professional stature. Additionally, critical decisions must be made in planning the growth of the college and programs and physical plant. My attitudes and approaches to college problems are those of constructive conservatism. I would encourage change as part of planned and controlled growth within the limitation of funds available.

Meaningful frequent direct dialogue between students and authorities must be encouraged and increased. If violent dissent or extreme disruption visit the campus, it should be met with sufficient administrative action and law enforcement to maintain campus operations.



Robert Swanson

ROBERT SWANSON, 31036 Grenada, Livonia, Resident of Livonia since 1962, wife, Billie, Two sons, Michael 5, William 4. EDUCATIONAL BACKGROUND-Graduate of Plymouth High School, University of Michigan, B.A. in Education since 1962, Wayne State University, 1965. Advanced business courses at University of Colorado and Wayne State University. EXPERIENCE - Ford Motor Co. since 1962, warranty and policy coordinator for Lincoln-Mercury, COMMUNITY ACTIVITIES-Mayor's Advisory Committee, Church Youth Advisory, Youth Group sponsor, St. Foster Parish, membership chairman for Republican PTA. AFFILIATIONS-PTA, Livonia Republican Club, St. Paul's Presbyterian Church, National Education Association and Michigan Education Association. WORK EXPERIENCE--college instructor two years and attorney for two years. **STATEMENT** regarding problems at Schoolcraft College: My general impression is that there are no more problems at Schoolcraft College than any other college in the area. In fact, there may be considerably fewer. It is apparent, however, there have been some disturbances in recent weeks involving a limited number of students and instructors.

It is difficult to make any profound statement as to what

cial situation which may lead to substandard educational quality. Potential student unrest.

Policy: The combining of a background in the field of education with knowledge of sound business techniques to produce a top quality education with the funds available for the maximum number of students.

A fair but firm policy in dealing with any persons engaged in activities disruptive to the educational process along with a preventive approach to keep such activities from starting.



James Taylor

JAMES TAYLOR 26202 Richland, Livonia, Member of the Schoolcraft faculty. Native of Hazel Park where he was a track and football star. Holds school records of 10.2 for 200 yard dash and 22.3 for 100 yard dash and 11.2 for 200 yard dash and 11.2 for 100 yard dash. Five children, Bob, a graduate of Franklin High in service, Diane, Franklin High; Maureen, Junior High at Franklin High; Cliff in Emerson Junior High; and Tom, attending Cooper Annex. EDUCATION--Graduate of Hazel Park High, B/Vocational Education from Wayne State and M/Vocational Education from University of Michigan. EXPERIENCE - 11 years at Ford Motor as service engineer, joined Schoolcraft in 1968 as instructor in Auto Mechanics and Automotive Technology. Making his first appearance in politics but felt there was a need for more firmness on the part of the Schoolcraft College Board and decided to run.

STATEMENT regarding problems at Schoolcraft College: The first and foremost problem is a lack of communication, a restricted exchange of ideas and philosophies between Students, Faculty, Administration, and the Board of Trustees.

A meaningful vehicle of communication must be established between these factions. The second problem is a lack of decisiveness with the present Board of Trustees, are ostensibly unwilling to fight for their convictions. Stop passing the buck.



John Thomas

JOHN THOMAS, 32214 Pardo, Garden City-wife, Virginia-children, Edward, 4, Jack, 5, attending Garden City Schools. EDUCATION - Garden City school system; BA from Eastern Michigan University; graduate school, work beyond BA at Eastern Michigan; professional school, JD from Wayne State University. CLUB-SERVICE AFFILIATION-Stole Society, three years, equivalent of honor society in college; Plymouth Rotary Club, Director of Plymouth Chamber of Commerce, American Bar Association, Michigan Bar Association, National Education Association and Michigan Education Association. WORK EXPERIENCE--college instructor two years and attorney for two years.

STATEMENT regarding problems at Schoolcraft College: My general impression is that there are no more problems at Schoolcraft College than any other college in the area. In fact, there may be considerably fewer. It is apparent, however, there have been some disturbances in recent weeks involving a limited number of students and instructors.

It is difficult to make any profound statement as to what

the college should have done in the incident referred to without having actually participated and observed the attitude, for instance, of the parties involved. What can be commented upon, however, is the damage which was done to the image of Schoolcraft College in the community.

I believe that the college has lost a considerable amount of support by various sections of the community. This is, as I perceive it, the principal problem currently facing Schoolcraft. My efforts would be directed to reestablishing and increasing the support of the local community for Schoolcraft



Lester Waldman

LESTER WALDMAN, 20426 Maplewood, Livonia, Resident of Detroit, Resident of Livonia for more than 10 years, wife, Shirley, Three children - Jeff, a junior at Wayne State; Rick, 11th grade at Clarenceville High; and Terri, Clarenceville Junior High. EDUCATIONAL BACKGROUND - Graduate of Case Tech High School, attended Detroit Tech, Attending College of Jewish Studies with goal of gaining a teacher's certificate following instruction in the Religious Curriculum in Jewish Parochial Schools. EXPERIENCE - Manager of the printing department for Burnham Skoppel & Co. in Detroit. CIVIC AFFILIATIONS - Livonia Human Relations Commission, Hiller Chairman for the Greater Detroit Branch British Council, Citizens Advisory Board of Clarenceville School Board, Member Heartsearth Civic Association, AFFILIATIONS - Past president of Livonia Lodge B'nai B'rith, Vice President of Livonia Jewish Congregation, Vice President Temple Beth Am, Sunday school teacher.

STATEMENT regarding problems at Schoolcraft College: The essential problem at Schoolcraft is keeping the lines of communication open between the administration, faculty and students. There must be complete understanding between them as to what each of their functions are and their limitations.

Each student and faculty members must be indoctrinated up to what the college stands for, which is to learn and understanding. The administration's job is to see that the college functions smoothly.



Ray Wyatt

RAY WYATT, 32548 Oakley, Livonia -- wife, Sharrie-EDUCATION--Detroit Cooley High School graduate, attended Wayne University and has taken courses at Wayne State University. Management - Technology Center and classes in the continuing education program offered by the Engineering Society of Detroit. CLUB-SERVICE AFFILIATIONS--Livonia Jaycees, Economic Club of Detroit, American Welding Society, Engineering Society of Detroit. WORK EXPERIENCE--three years, equivalent of honor society in college; Plymouth Rotary Club, Director of Plymouth Chamber of Commerce, American Bar Association, Michigan Bar Association, National Education Association and Michigan Education Association. WORK EXPERIENCE--college instructor two years and attorney for two years.

STATEMENT regarding problems at Schoolcraft College: The problems of Schoolcraft College are basically the same as with most educational institutions throughout the country. These problems are primarily: 1. Student unrest. Whether due to personal frustration or outside agitation, most colleges have some student rebellion. 2. Faculty indifference. Turn over in "academic freedom" and the need for order, faculty have been unable to come to terms with student problems. 3. Money. Most educational institutions are finding it more difficult to finance even their basic functions.