

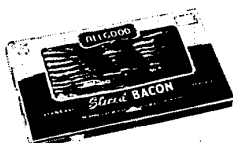
we care



Chuck Steak
69^c lb

Boneless Bar-B-Q Beef Favorites
 Strip Steaks lb. 2²⁹
 Flank Steaks lb. 1¹⁹
 Delmonico Steaks ... lb. 2²⁹
 Top Round Steak ... lb. 1²⁵
 Boneless Chuck Roast lb. 89^c
 Rump Roast lb. 1¹⁹

ALLGOOD Brand SLICED
BACON



2-LB. PKG. **1²⁷**

1-POUND PACKAGE

65^c

"SUPER-RIGHT" Fancy Sliced ... 1-LB. PKG. **69^c** "SUPER-RIGHT" COUNTRY STYLE Thick-Sliced ... 2-LB. PKG. **1³⁵**

Whole Fryer Legs or **FRYER BREASTS**
(RIBS ATTACHED)



BACKS REMOVED

59^c lb

CUBED
Veal Steaks
 lb **79^c**

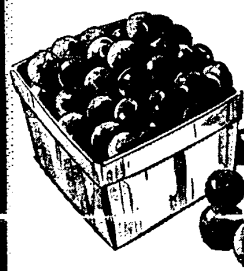
"Super-Right" Frozen Hamburger 2-LB. PKG. **1³⁹**
Beef Steaks lb. 69^c
Polish Sausage lb. 69^c
Bar-B-Q Chickens .. lb. 69^c

SLICED
Beef Liver
 lb **59^c**

Ducklings 4 TO 4-LB. AVERAGE ... lb. 59^c
Boneless Ham "Super-Right" Cooked lb. 1³⁹

WHOLE LEG
Leg O' Lamb
 lb **89^c**

CHECK THESE & CONO PRICES!



Blueberries
 MICHIGAN CULTIVATED

3 PT. BOXES **1⁰⁰**

CASE OF 12 PINTS 3.89

FRESH **PEACHES**
 lb **19^c**

RED RIPE **Watermelons**
 EACH **79^c**

MICHIGAN SWEET **CORN**
 DOZEN **49^c**

KLEENEX Facial Tissue BOX OF 125 **19^c**
 PRINTED Gala Towels 150 SHEETS **32^c**
 ELBOW MACARONI Creamettes 7-OZ. PKG. **13^c**
 AEP—SOLID WHITE Albacore Tuna 3 7-OZ. CANS **1⁰⁰**

CHEF BOY-AR-DEE Ravioli 15½-OZ. CAN **29^c**
 HERSHEY'S Chocolate Syrup ... 1-LB. CAN **19^c**
 LOG CABIN Syrup 12-OZ. BTL. **31^c**
 ALL FLAVORS Kool-Aid 6 ¼-OZ. PKGS. **25^c**

IONA
Sweet Peas ... 1-LB. 1-OZ. CAN **10^c**

IN WATER EMPRESS White Tuna 7-OZ. CAN **37^c**
 READY TO BAKE Pillsbury Biscuits 4 10-OZ. TUBES **38^c**
 TURKEY OR CHICKEN FROZEN Banquet Meat Pies 5 8-OZ. PIES **99^c**
 DIET MAZOLA (IN ½ LB. SERVERS) Imitation Margarine 1-LB. CTN. **42^c**

MUELLER'S Elbow Macaroni .. 1-LB. PKG. **25^c**
 RAGU Spaghetti Sauce .. 1-LB. JAR **38^c**
 MARZETTI Slaw Dressing ... PT. BTL. **59^c**
 NABISCO PREMIUM Saltines 1-LB. BOX **33^c**

AUNT JANE'S ICEBERG
Kosher Dill Strips 1-PT. 10-OZ. JAR **49^c**

HEINZ Ketchup 14-OZ. BTL. **24^c**
 HEINZ Hot Ketchup 14-OZ. BTL. **24^c**
 4c OFF LABEL PARKAY Soft Margarine ... 1-LB. CTN. **39^c**
 BREAST O' CHICKEN Chunk Light Tuna 6½-OZ. CAN **27^c**

BREAST O' CHICKEN Light Chunk Tuna 9½-OZ. CAN **42^c**
 REALEMON Lemon Juice PT. BTL. **33^c**
 BURNETT'S Color Kits FOUR ¼-OZ. BTL'S. **29^c**
 BENNETT'S Chili Sauce 12-OZ. BTL. **33^c**

HORLICK'S
Malted Milk .. 15½-OZ. JAR **29^c**

Post Honey Comb 9-OZ. PKG. **38^c**
Cheerios 10½-OZ. PKG. **34^c**
Lipton's Tea Bags 100 IN CTN. **99^c**
Apple Sauce Mott's 2 15½-OZ. JARS **43^c**
Hawaiian Punch 1-QT. 14-OZ. CAN **29^c**
Peanut Butter Jif 12-OZ. JAR **39^c**
Alcoa Foil 25 FT. ROLL **26^c**