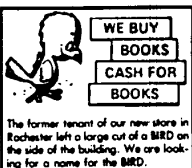




let there be light inc.
838 Woodward
Birmingham, Michigan 48011
212-646-4662



**WE BUY BOOKS
CASH FOR BOOKS**

The former tenant of our new store in Rochester left a large cut of a BIRD on the side of the building. We are looking for a name for the BIRD.

NAME THE BIRD CONTEST

Send your entry to:

ABBEY BOOKS
115 E. THIRD STREET
ROCHESTER, MICH. 48063
Phone: 651-4646

THE WINNER WILL RECEIVE \$100.00 CERTIFICATE
good toward the purchase of merchandise in our store.

ABBEY ROYAL OAK
4126 N. Woodward Ave.
at 13 1/2 Mile Road
PHONE: 576-4559

ABBEY DEARBORN
22039 Michigan Ave.
Dearborn, Mich.
565-5300

Entries accepted no later than midnight, October 31, 1976

Foundation meeting looks to diabetes research

The Juvenile Diabetes Foundation has scheduled a general meeting for diabetes and their families at 8 p.m. Sunday, in the Hyatt Regency Hotel, in Dearborn. TV personality Bill Bode will be master of ceremonies for the event which will host authorities on the latest findings in diabetes research, representatives from pharmaceutical companies and leading physicians in the field of diabetes.

The meeting is without charge. On the evening's agenda, Theodore Harris, special assistant to President Gerald Ford, will speak. He also will accept a plaque for his efforts in helping JDF keep legislators informed on the workings of the group.

Dr. Arthur Rubenstein, professor of medicine from the University of Chicago, will discuss the latest findings in diabetes research.

CAROL LURIE, national president of JDF, will speak and present checks to the first donor research teams to be awarded grants from JDF in Detroit. She will give a check to Dr. Robert Frank, of the Kresge Eye Institute, whose team is working on the clues to the cause

of diabetic retinopathy, tissue culture and enzyme studies of retinal micro vessels.

Another check will go to Dr. Pedro Cortes and Dr. Nathan Levin, from Henry Ford Hospital. Their project is kidney disease prevention.

AMES PHARMACEUTICAL Company will announce, for the first time, a new tool in the treatment of diabetes. Sherwood Medical Industries will have a display of their products at the meeting including a new monojet needle to aid in the treatment of diabetes.

An educational company, Medfact, Inc. will display a slide presentation which covers the onset of diabetes and tells how to live with it.

Leading physicians from the Detroit area will be attending, along with local political figures, business executives, professionals, and their wives.

JDF members who are helping to plan the event are Henry Gutting of West Bloomfield and Dr. Leonard Wayne, Marsha Gordon, Ron Winchester and Dr. Frank Reisman, all of Southfield. Others are Arlene Feller of Livonia and Nora Coalier of Troy.

Margaret Roberts will take inquiries

about the meeting, or give membership information on the Michigan chapter of JDF. Call her at 546-6511.



Dr. Robert Frank is shown with the Arizon Laser used in the treatment of diabetic retinopathy.

Learn to frame your own prints!

Picture Framing Class

Save up to 50% by assembling your own frames in our workshop. We provide tools and expert instruction.



- Choose from 100 frame moldings. Assemble it right in the store.
- Frame moldings, glass and mats will be cut for you.
- Worktables, tools and vices provided.
- Morning, afternoon and evening classes.

CALL 358-1200

WARDS TEL-12
MALL STORE ONLY
U-DO-IT PICTURE FRAME WORKSHOPS, INC.

MONTGOMERY
WARD



DR. NATHAN LEVIN



DR. PEDRO CORTES

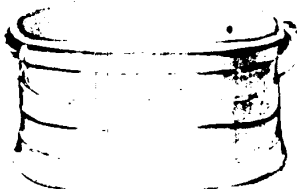
Mothers:
YOUR CHILD'S PRECIOUS FEET ARE YOUR RESPONSIBILITY

- There is no substitute for quality and carefully fitted shoes
- Doctors' shoe prescriptions correctly fitted

GABE SHOES

FARMINGTON RD. AT 12 MILE RD.
KENDALLWOOD CENTER GR 6-3401

For whatever needs planting!
Now in Stock



REPRODUCTION OF A STAFFORDSHIRE FOOTBATH
Ceramic, all white, 17" L. x 8 1/2" H., x 12" W.

Curiosity Shoppe Ltd.

32800 Franklin Road
Franklin, Michigan 48266-2554

open 9:30 to 5:30
Tuesday thru Saturday

Elegant Leather Upholstery from our James River Collection

Elegant top-grain Leather Upholstery thrives on tradition, ignores fads and absolutely exudes the luxury of 18th Century design. Our James River Collection, an exquisite gallery of reproductions from that golden Georgian era now includes these seven stunning additions. Each is available in your choice of 20 rich leather colors (including 5 antiqued English "wiped leather" colors at the same prices). Don't put these beautiful pieces in a touch-me-not category. Top-grain leather is tough, resilient and grows richer with the passing years . . . and more loved.



Special \$1299



Special \$259



Special \$269



Special \$299



Special \$599



Special \$499



Special \$599

as advertised in October House Beautiful on Newsstands September 20th

WE HAVE BEEN TOLD we have the finest genuine top-grain leather selection (and the very best prices) in Michigan! And . . . it is true! Through the years we have carefully enlarged our leather collection to include your every desired piece in leather. . . loveseats, sofas, lounge chairs, desk chairs . . . every handsome and practical leather item available. Most of our exciting collection may be seen in our "Man's World, Leather & Library Shop," in the Hayloft, in our Ethan Allen Gallery, or some, such as these new beauties, are displayed in our Georgetown Court Gallery.



4080 TELEGRAPH RD. (at Long Lake Rd.) BLOOMFIELD HILLS • 644-7370

Ethan Allen
LIVING ON TRADITIONAL INTERIORS

Want the look of an Heirloom?
Use Ethan Allen adaptations.

It's simple, and it's fun to use fine Ethan Allen reproductions for a completely new look in your room . . . or entire home! A suggestion: between two windows or an entry hall, place Chippendale side chairs on either side of an Ethan Allen solid cherry lowboy. A Chippendale-inspired mirror continues the happy theme. Come in our Ethan Allen Show-case and let us show you how easy it is to have the exquisite grace of period styles at affordable prices.



4080 TELEGRAPH RD. (at Long Lake Rd.) BLOOMFIELD HILLS • 644-7370