

# The fashion plate

## Casual 'investment' clothes big for spring

"What will the busy, contemporary woman wear for spring?" That's what the women of Franklin Village asked Just Marilyn, a boutique at Twelve Mile and Evergreen in Southfield. Marilyn responded to the seasonal question with a fashion show to benefit the Friends of the Franklin Library and chose models from the membership to illustrate the answer.

"Clothes for the contemporary woman reflect the new casual approach to living, today," said Marilyn and added, "Gray is the big color for spring."

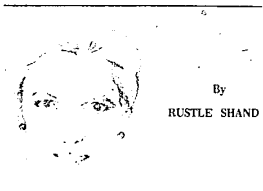
Many of the fashions shown reflected the seasonless approach to classic investment dressing and may be worn year-round, except in the heat of summer.

Lots of pants, many in easy-care fabrics, teamed with print blouses and jackets and sometimes vests.

A strong, continuing trend in gaucho pants and culotte skirts was predicted by Marilyn Bersen, who shares with Marilyn Rothenberg the ownership of Just Marilyn. She said the store does its buying "on a personalized basis to meet customer demand."

ASIDE FROM the inevitable navy denim and popular "Ultimate" suede and the myriad ways of jump suits and coordinates, there were signs of the flowers that bloom in May.

Diane Von Furstenberg's easy, flowered and very pretty cotton knit dresses assured us of a soft spring. Her tiny tulip print flows over the body or may be sashed at the waist, while her popular wrap dress in leaf green and white print bears her obvious signature.



By RUSTLE SHAND

Bonnie Cashin's beige wools hint at luxurious fantasy and freedom in a poncho cape worn over a dress or a pantalon jump suit with a bubble look.

There was a shiny, slicker-look navy pant suit, reminiscent of the wet look, that promised protection from the spring rains. A white gabardine jumper dress over a green and white polka-dotted blouse topped with a green jacket screamed "hurry spring."

A polished cotton, pale lavender pant with a matching casual jacket looked forward to warmer summer days.

SOME OF THE MODELS found the new pale gray an unflattering hue and decided they would need color at the neckline or a new makeup to compensate for the color-draining qualities of the lack-luster gray.

## Phi Mu to fete area members

Charter members Detroit alumnae chapter of Phi Mu and those who have held membership for 50 or 25 years will be honored by the fraternity on its Founder's Day, March 6.

The occasion will be marked with a 2 p.m. tea at the home of Linda Perkinson, 2465 N. Wattles, Troy.

Peg Fouser of Bloomfield Hills, a charter member, and Barbara Faulkner of Birmingham, a member 50 years, will be among the honorees. Other charter members are Ruth Thomas of Detroit, Alleyne Weaver of Grosse Ile and Edna Ross of Detroit.

Included among the 25-year members are Marlene Warburton of Rochester, Marilyn Hayden of Franklin and Janet Holt of Plymouth.

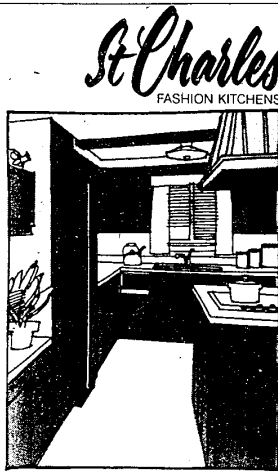
Those attending the tea are asked to bring a donation of construction paper, crayons or a simple cardboard puzzle to be donated to Project Hope, the group's national philanthropy. For reservations, call Mrs. Perkinson, 643-9468.

## Dr. DeBakey is speaker

Dr. Michael E. DeBakey, nationally-known heart specialist, will be the guest lecturer at 10 a.m. on Friday, Feb. 25, in the Rackham Memorial Building, 100 Farnsworth, for the fourth annual Life Sciences Convocation for high school-college students presented by Wayne State University and sponsored by the Metropolitan Detroit March of Dimes.

After the lecture, there will be a question and answer period.

Dr. DeBakey, director of cardiovascular research and training center at the Methodist Hospital in Houston, is best known for his pioneering efforts in the development of an artificial heart.



**St Charles**  
FASHION KITCHENS

Each St. Charles kitchen is a masterpiece of functional elegance and enduring beauty, custom-designed from a wide selection of furniture woods, textured metals and designer colors. Come browse at your leisure and let us assist you.

Free—our colorfully illustrated 44-page Kitchen Ideas Book, just for coming in, \$3.00 by mail. Hours: Weekdays 9:00-5:00; Sat. 9:00-12:00

ST. CHARLES KITCHENS OF DETROIT  
2713 N. Woodward Avenue  
Bloomfield Hills, Mich. 48303 (313) 334-4771  
(Just South of Square Lake Road)

Name \_\_\_\_\_  
Address \_\_\_\_\_ Phone \_\_\_\_\_  
City \_\_\_\_\_ County \_\_\_\_\_  
State \_\_\_\_\_ Zip \_\_\_\_\_

### Atlantic Drapery Shoppe

#### DRAPERY SALE

Labor \$4.00 per panel

#### Waverly and Bloomcraft

#### Custom Ordered Spreads

Special prices available on Drapery, Slipcover and Upholstery fabrics. Largest selection of fabrics, fringes, tassels and trims in Michigan.

Labor Special on Custom Slipcovers

Chair - \$32<sup>90</sup> — Sofa - \$42<sup>90</sup>

360 E. Maple, Birmingham 647-2020 647-0721

### 'Nursing update' set at Mercy

A program called "Nursing Update" for registered nurses who wish to return to work, but feel a need to refresh and update their skills will be held at Mercy College of Detroit from March 7 to April 28.

The course offers both classroom and clinical training and is designed primarily for the nurse who wants to return to work but is hesitant because of the many changes which have occurred since she last worked.

"The younger nurse who has not worked for five to 10 years and now wants to return to work because her children are in school will find this program a real help," said Sister Mary Bernice Pohl of the Mercy nursing department.

She added that it will also be helpful to the nurse who might be from 40 to 50 and whose children have left home.

"She has been away from nursing for many years and knows many changes have taken place," Sister Mary Bernice added. "She needs

Parenting course coming

The Metropolitan Detroit March of Dimes and Wayne State University College of Lifelong Learning will present a special course on "Priorities in Parenting" beginning Thursday, March 3 and continuing each Thursday through March 31 at the Engineering Society of Detroit, 100 Farnsworth.

There is no charge for the course, which will run 4-6 p.m. each session. Registration is on a first come, first served basis.

The course is designed to be helpful to professionals who have responsibilities in areas of health, science, nutrition, family living and sex education.

College choir plans concert

The Chamber Singers of North Park College in Chicago will perform at 8 p.m. Wednesday, Feb. 25, in Evangelical Covenant Church, Eight Mile west of Telegraph in Detroit.

The choir, currently on winter tour, is directed by Gregory S. Athos of Warren.

Secular music, using authentic court instruments like the krumphorn and recorder, and a sequence of selections depicting the life of Christ are included in the repertoire.

### Machus presents

## The Pastry Shops

- Birmingham's Finest Pastries
- Wedding Cakes
- Special Party Cakes

Machus Bloomfield Plaza  
Telegraph at Maple 626-4203

Machus West Maple  
160 West Maple 644-1010

Machus Adams Square  
633 South Adams Road 644-1031

### EVERYTHING MUST GO!

## MID-WINTER STOREWIDE SALE

UP TO **50%** OFF

- many floor samples reduced 50%.
- special orders taken at sale price.
- Entire store on sale.
- all Sales Final, Free local delivery.

**Colony Interiors**

WEST BLOOMFIELD 626-1500 SOMERSET HILLS 643-0500

A STEP UP TO ELEGANCE

### Stewart-Glenn 60th annual winter sale

BEGIN A TRADITION AT Stewart-Glenn

Our Entire Traditions VII Collection is 20% Off For Three Days Only

A classic design endures. Its elusive character remains tastefully elegant... year after year. Traditions VII is a dining collection of timeless French period styling... masterfully interpreted for twentieth century living. Executed in fine pecan solids and veneers, classic Louis XV definition is evident in graceful cabriole legs, flared and arched, scrollwork treatments, and distinguished hardware appointments. Quality is noted in the meticulous craftsmanship, hand-laid fancy face veneers and a hand-rubbed finish that can only be described as... exquisite. Included are styles for refined formal dining rooms... and compact or dual-purpose dining areas. All of the pieces in this beautiful collection may now be ordered at 20% off for three days only. Begin a Tradition... a tradition of gracious dining... with Traditions VII.

China and Deck Three Tray Drawers Beveled glass, Interior light. W-54 D-17 H-80 Sale \$1099.	Side Chairs W 19 1/2 D 17 H 40 1/2 Sale \$139.	Arm Chairs W 22 1/2 D 17 H 40 1/2 Sale \$154.	Junior Oval Table W 50 D 42 H 29 1/2 2-18" apron leaves Sale \$489.	Silver Chest W 28 D 16 H 43 1/2 Five drawers, four with locks and silver inserts. Sale \$527.
---	--	---	--	--

Some Pieces by Special Order

STEWART-GLENN CO. "YOUR FULL SERVICE STORE" has no extra charge for:
 

- Careful Inspection & Set-Up
- Courteous Delivery Service
- Generous Seating Parking

Ask our Interior Designers to help you with your decorating problems. Use our 4-Step Plan for Interior Design. No extra charge for your satisfaction.