

Coaches pick O&E team

Talent marks all-area cagers

By DAVID SAUNDERS

The Observer & Eccentric all-area basketball team is a coaches' dream team.

Leading the list is consensus All-State guard Kevin Smith. The 6-1 senior from Brother Rice is noted for leading the offense and defense of a team that was second in the state. Coach Bill Norton said that he will remember Smith for his team leadership rather than his statistics.

Smith's statistics prove the all-around player that he is. He averaged 27 points, six assists, five steals and five rebounds.

Other awards going Smith's way include being voted most valuable player by the team, and being given the inspiration award and captain award by Norton. He earned all-state honors and made the McDonald's All-American team.

Smith set a single game scoring record of 47 points. He scored 25 points in the championship game against Lansing Everett. Rice finished the season at 23-4.

MARVIN MILES, a 5-11 senior guard from Southfield, made the first team. Miles is an 89 per cent free throw shooter, and averaged 17 points a game. He has an excellent outside shot.

Southfield won the Southeastern Michigan Association basketball record with a 19-5 overall record. Miles hit on 45 of 46 free throws in the 10 league games. Southfield won their district but lost to Livonia Churchill in the first game of the regionals.

DAVID BENNETT, a 6-6 senior forward from Lahser, led his team to a 20-4 record. Lahser went undefeated in the Metro Suburban Conference, won their district, but lost to Pontiac Central in the regional finals.

Bennett led the team with a 17.7 scoring average, and hauled down 10.7 rebounds a game. He was high scorer in 11 of 21 games.

He can shoot from anywhere on the court, and had a 52 per cent field goal average. Bennett holds three Lahser individual records.

The 6-6 forward set four individual 1967-77 records. He scored the most points in one game (31), most rebounds (19), field goals made (14) and attempted (21).

CRAIG MAASS, a 6-4 senior forward guard, was voted most valuable player on the Groves team with a 17.9

scoring average. Groves placed second in the MSA with a 14-8 record.

The 6-4 senior led the team in rebounds with 12 a game, third in assists with 11.4 and was the second highest scorer. He also led the team in free throws, while scoring 393 points in 22 games.

In addition, Maass made first team all-league for his second straight year, made all-county Class A second team. He was the leading scorer for Groves in 11 games.

BILL PHILLIPS from Southfield-Lathrup, the fifth man on the all-area team, is perhaps the most explosive and the greatest leaper.

The 6-7 senior forward-center was the leading scorer in Oakland County with a 31.6 average. He also had 18 rebounds a game.

Phillips is very quick and has a good outside shot for a big man. He is a two-time all-stater, and holds the school rebound and scoring records. Phillips made the Observer & Eccentric team as a sophomore at Southfield High.

Southfield-Lathrup finished the sea-



Thursday, April 7, 1977

(F) 1C

son at 13-8. They lost to Lahser in the first district game in overtime.

Together these players averaged 111.2 points a game. That is the explosive offense any coach would like. They are all excellent free throw shooters and hit better than 50 per cent from the field.

The second team and third team are also squads any coach would like. The second team has a of height on the boards in Tim Andree, 6-9 sophomore from Brother Rice. A junior, 6-6 Mark Henn from Troy, could help any team on the boards. Smaller

members of the second team are 6-0 Britt Lewis from Rochester, 5-10 Jeff Polasek from Avondale and 6-1 Steve Knudson from Lahser. The last three are seniors.

The third team is much shorter but has good scorers. They are also a very quick team.

The team consists of 6-4 senior Jeff McCall from Southfield, 6-1 senior Dick Radatz from Farmington, 6-4 senior Jamie Drew from Lahser, 6-4 senior Tim Schearer from Brother Rice and 6-1 senior Lance Baylis from Groves.



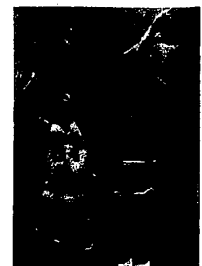
Bloomfield Hills Lahser's Dave Bennett



Southfield-Lathrup's Bill Phillips



Brother Rice's Kevin Smith



Groves' Craig Maass



Marvin Miles
Southfield High School sharpshooter

Top coach—
see page 2

FIRST TEAM

| Name | School | Height |
|---------------|-----------------|--------|
| Craig Maass | Birm. Groves | 6-4 |
| Bill Phillips | South-Lathrup | 6-7 |
| Kevin Smith | Brother Rice | 6-1½ |
| Dave Bennett | B.H. Lahser | 6-6 |
| Marvin Miles | Southfield High | 5-11 |

SECOND TEAM

| Name | School | Height |
|---------------|----------------|--------|
| Steve Knudson | B.H. Lahser | 6-1 |
| Tim Andree | Brother Rice | 6-9 |
| Britt Lewis | Rochester High | 6-0 |
| Mark Henn | Troy High | 6-6 |
| Jeff Polasek | Avondale High | 5-10 |

THIRD TEAM

| Name | School | Height |
|--------------|-----------------|--------|
| Jeff McCall | Southfield High | 6-4 |
| Dick Radatz | Farmington High | 6-1 |
| Jamie Drew | B.H. Lahser | 6-4 |
| Tim Schearer | Brother Rice | 6-0 |
| Lance Baylis | Birm. Groves | 6-1 |

The incomparable 450SL.
Its concept: unique. Its heritage:
unmistakable. Its performance:
pure Mercedes-Benz.

In the variegated world of two-seat sports cars, the Mercedes-Benz concept of design is unique, combining traditional sporting performance with unparalleled comfort and luxury.

This heritage was unmistakably represented in the legendary gull-winged 300SL. Today you will find it in the distinctive 450SL.

At the heart of the 450SL's performance is a sophisticated overhead camshaft V-8, enhanced

with third-generation Mercedes-Benz fuel injection. All four wheels feature independent suspension and disc brakes. Creature comforts include anatomically correct bucket seats, air conditioning, AM/FM stereo, electric windows, cruise control—and an amazing amount of room.

Test drive the Mercedes-Benz 450SL. It will prove to you that, truly, the legend continues.

MICHIGAN'S LARGEST
MERCEDES-BENZ DEALER

ESTATE MOTORS, LTD.

464 SOUTH WOODWARD AVENUE
DOWNTOWN BIRMINGHAM

644-8400

OPEN MONDAY AND THURSDAY EVENINGS UNTIL 9 P.M.