

# Building Supplies

**REDFORD**  
CASHWAY LUMBER

A DIVISION OF **ERB** LUMBER CO.

at **REDFORD'S**  
LOW LOW **PRICES**

Start at the Top with Home Improvements . . .



. . . a New **Celotex**® Roof

**16<sup>55</sup>**  
sq.

1 SQ.=100 SQ. FT.  
3 BUNDLES=1 SQ.  
SELF-SEALING

**5<sup>55</sup>**  
BUNDLE

## SAVE ON INSULATION



**KRAFT FACED**  
3 1/2"x15"-70 SQ. FT.  
**KRAFT FACED**  
6"x15"-40 SQ. FT.

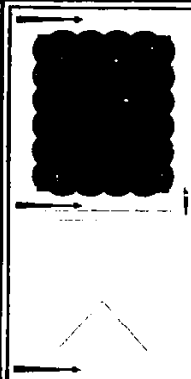
**UNFACED ATTIC INS. 6"x15"**  
GENUINE OWENS CORNING FIBERGLAS

House drafty . . . heating system overworked? Six inches of Owens-Corning Fiberglas in your uninsulated attic can help the problem. Depending on where you live, you can save from \$50 to \$200\* a year on your heating and air conditioning bills.  
• Install yourself in one day . . . it's easy!

REG. 7.99  
ROLL  
**6<sup>97</sup>**  
ROLL

### ROOF COATINGS

	REG.	SALE
5 GAL. PLASTIC ROOF CEMENT	8.99	7.77
5 GAL. LIQUID ROOF COATING	8.99	7.77
1 GAL. PLASTIC ROOF CEMENT	2.79	1.99
1 GAL. LIQUID ROOF COATING	2.79	1.99



**POPULAR X-BUCK ALUM. COMB. DOOR**

- WHITE ENAMELED
- Colonial HARDWARE
- FULL 1" THICK
- SAFETY GLASS

2'8" AND 3'0"x6'8"

**39<sup>95</sup>**  
EA.

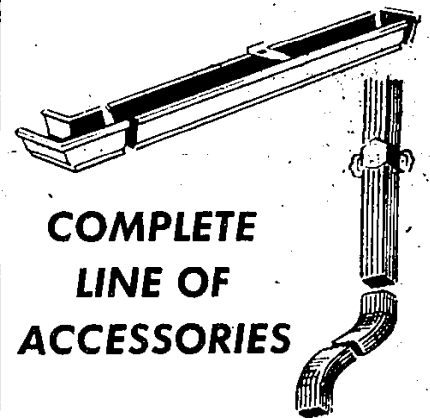
**ALUM. COMB. STORM-SCREEN DOOR**

- #550-MILL FINISH
- SAFETY GLASS
- FULL 1" THICK
- 2'8"x6'8"-3'0"x6'8"

REG. 35.95  
**33<sup>95</sup>**  
EA.

## ALUMINUM GUTTER

WHITE ENAMELED  
5" K-STYLE



COMPLETE  
LINE OF  
ACCESSORIES

10 FT. LENGTHS  
DOWNSPOUT  
OR  
GUTTER

**ONLY 3<sup>67</sup>**  
EA.



**READY-MIX CEMENT**  
90 LB. BAG

**MORTAR**  
80 LB. BAG  
BOTH REG. 2.19



**1<sup>66</sup>**  
BAG

**Sale**

**1<sup>89</sup>**  
BAG

YOU MUST HAVE COUPON FOR LOWEST PRICE  
**VALUABLE COUPON**  
DRYWALL

	REG.	SALE	COUPON
3/8"-4'x7'	2.39	2.19	2.09
3/8"-4'x8'	2.59	2.39	2.29
1/2"-4'x7'	2.49	2.29	2.19
1/2"-4'x8'	2.79	2.59	2.49

### PLAY SAND

WASHED  
CLEAN  
DRY  
80 lb.  
BAG



REG. 1.49  
**1<sup>29</sup>**  
BAG

### ASPHALT

PATCH  
MIX  
80 lb.  
BAG



REG. 3.29  
**2<sup>99</sup>**  
BAG