

## A NERVOUS BREAKDOWN

Miss Kelly Tells How Lydia E. Pinkham's Vegetable Compound Restored Her Health.

Newark, N. J.—“For about three years I suffered from nervous breakdown and got so weak I could hardly stand, and had headaches every day, tried everything I could think of and was under a physician's care for two years. A girl friend had used Lydia E. Pinkham's Vegetable Compound and she told me about it. I tried it the first day I took it. I began to feel better and now I am well and able to do most any kind of work. I have been recommending the Compound ever since and give my persuasion to publish this letter.”—Miss FLO KELLY, 476 So. 14th St., Newark, N. J.

The Wise Chief. “Reporters—‘What started the blaze, chief?’ ‘Fire Chief (in a whisper): ‘Spontaneous combustion.’”

“Keep your liver active, your bowels clean by using Dr. Williams' Pink Pills, and you'll keep healthy, wealthy and wise. Ad.”

Often the apology is worse than the offense.

### Children Who Are Sickly

When your child cries at night, tosses restlessly in its sleep, is constipated, fretful or has symptoms of worms, you feel worried. Mothers who value their children's comfort and the welfare of their children, should never be without a better Mother Gray's Sweet Powders for Children.

For sore throats, teething, diarrhea, colic, worms, indigestion, etc. These powders are pleasant to use, and give relief. They cleanse the bowels, soothe the stomach, and give healthy sleep. Don't accept cheap imitations. Get the genuine. Sold by all druggists. Sample mailed FREE. Address: Mother Gray's Sweet Powders for Children, Dept. 3, Buffalo, N. Y.

### DR. KELLOGG'S ASTHMA REMEDY

Headache tired or dizzy? It's your kidneys. Ask druggist for box shown here—Dodd's—speedy relief or money back.

### ASTHMA

DR. J. C. KELLOGG'S REMEDY

WHEN your mouth tastes like all the mean things you ever did—mixed together, then you need BEECHAM'S PILLS

Your mouth is a good indication of the condition of the stomach and bowels. Largest Sale of Any Medicine in the World. Largest Sales in the West. In boxes, 10c, 25c.

### Farm Opportunities in United States

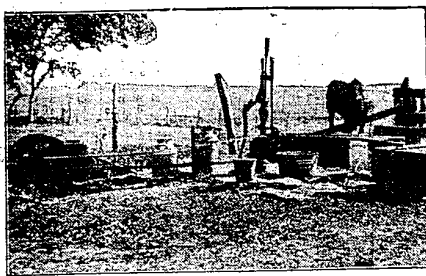
IF YOU are interested, write to the “Washington Bureau,” 2220 National Administration Building, Washington, D. C. for free information, samples and full particulars about your requirements.

### Colds Crow Better

Surprisingly soon, those inflammation deep throats, sore throats and colds, that are the first step, when you use reliable, time-tested

### PISO'S

## TESTING FUEL SYSTEM AND ADJUSTING CARBURETOR IN OPERATING AN ENGINE



A Gasoline Engine Furnishing Power to Pump Water.

(Prepared by the United States Department of Agriculture.)

To see that the carburetor contains a liquid which looks like gasoline, however, is not enough, as water and gasoline look very much alike, and it is not at all uncommon for water to be present in the gasoline system. As it does not burn, water entering the system when it is always filled, as is generally supposed. It is often the result of condensation of moisture on the sides of the gasoline tank, which runs down and settles at the lowest points in the system. This may be in the bottom of the carburetor, in the supply pipe, or in the strainer, or settling chamber. Where strainers or settling chambers are used, they should be drained and cleaned frequently, especially in cold weather, when any water present may cause considerable trouble for freezing.

**For Removing Water.**

1. A petcock in the carburetor is a good means for removing any water which may have settled at the bottom of the bowl of the carburetor, and which, when present, will cause difficulty in starting. When working in this way, it is usually advisable to allow enough gasoline to run through to make sure that the carburetor has a full supply, as sometimes a partial stoppage of the pipe will allow a small amount of gasoline to get into the carburetor, but not enough to allow the engine to start easily. Allowing a half-cupful of fuel to run through it eliminates this possibility. It is easy to ascertain whether water is present in the carburetor by catching in a glass bottle or tumbler the liquid which runs through when the petcock is open. Any water present will settle at the bottom of the glass and a thin line will be visible between the water and the gasoline. Air is important.

It is not enough merely to have fuel in the tank; it must be mixed with the proper amount of air as it is drawn into the combustion chamber. It sometimes happens that the needle valve is closed or stopped with dirt, and that while the fuel is not being supplied, the engine will start by sucking in the combustion chamber, by opening this and cranking the engine a few times, the engine will start by sucking in whether gasoline is entering the chamber. The same result can be obtained by smelling the exhaust when the engine is turned over, or by moving the needle valve to the open position during the suction stroke and opening it during the compression stroke.

**Make Engine Start.**

By alternately opening and closing the needle valve, first so that it will be possible to readjust it if necessary. It is easy to see whether a different mixture will make the engine start. Or, when there is a small amount of fuel entering the cylinder, a small quantity of gasoline (about a teaspoonful) may be poured into the combustion chamber through the priming cock or spray-plug hole and allowed to stand for 15 minutes, or two to vaporize and mix with the air before cranking the engine. If, then one or two explosions occur and no more, it is an indication that only the priming has burned, and that more fuel is not being supplied in sufficient quantity through the carburetor.

**Mixture Too Rich.**

It sometimes happens that too rich a mixture of fuel and air enters the combustion chamber, which is practically as bad as no fuel at all, as the rich mixture cannot be exploded by the spark. This does not often happen with a cold engine and with the grades of fuel now available. However, it is not at all uncommon with a warm engine. There are several ways of overcoming this difficulty. Closing the needle valve and cranking the engine a few times will remove the rich mixture and quickly and replace it with practically pure air. Removing a spark



## DRAGGING ROADS IN SPRING

By Taking Advantage of Proper Moment Many of Ruts and Bumps Can Be Smoothed Out.

“Most earth and gravel roads are in largely because of the heavy fall hauling of harvested crops, and the rush of necessary farm work, which takes precedence over any kind of road work. The cold weather strikes them in this condition and makes each rut in the snow almost as solid as rock, and if the spring these break down into mud.

Traveling over these ruts is a very racking, uncomfortable, and sometimes painful, operation. The rough jobs require a reduction in speed, causing an added strain on all classes of hauling equipment, and frequently force the automobile owner to abandon the use of his car for the entire spring rather than risk a few dollars.

Most of the unpleasantness and difficulty even in the worst weather, for there are times when the worst cut-up surface is in fairly good condition for dragging. By taking advantage of this proper season, the ruts and bumps can be smoothed out, and the next freeze will result in a smooth hard-surfaced pipe that can be favorably compared to a concrete highway.

Owing to the fact that the road surface will be rather wet and slicky when dragged, greater care must be exercised in handling the drag. If the blades of the drag are set vertically, there will be a tendency to scrape up too much earth, or, in the language of the road men, “blow up.” Also, if the tilted to the team is set too near the center the angle of the drag with the road will be too nearly a right angle, or straight across, to shed or crown the wet earth.

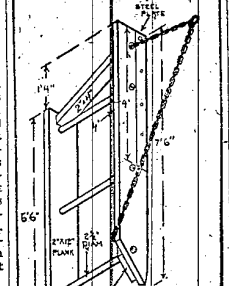
Dragging under these conditions should be done in “ironing out the wrinkles” process; hence the blades of the drag should be given a forward or flatter inclination than when working a dry road. The hitch should be so arranged that the angle of the drag than ordinary, thus causing the earth to shed better and prevent trouble. For extremely bad conditions, the use of the road machine, ahead of the drag, will be more readily handled to the road than ordinary, thus causing the earth to shed better and prevent trouble. For extremely bad conditions, the use of the road machine, ahead of the drag, will be more readily handled to the road than ordinary, thus causing the earth to shed better and prevent trouble. For extremely bad conditions, the use of the road machine, ahead of the drag, will be more readily handled to the road than ordinary, thus causing the earth to shed better and prevent trouble.

**PROPER VARIETY OF COTTON**

Campaign Being Waged in Louisiana to Secure Planting of Only High-Yielding Varieties.

(Prepared by the United States Department of Agriculture.)

Because the best yielding varieties of cotton produce 30, and even 40 percent more than the poor varieties, as shown by experienced results, a campaign is being waged in Louisiana by the State Agricultural College, in cooperation with the United States Department of Agriculture, to secure the planting of only high-yielding varieties. It is emphasized that whatever variety is planted, it should be pure; that is, every stalk should be the proper variety in appearance and in productive capacity to every other stalk. The mixed or hybrid variety will never do this, for many of the stalks will be barren or will be “off” products. It is also emphasized that the cotton grower should not depend wholly upon improved seed as his means for increasing yields, for a fertile soil is the most important feature in successful cotton growing. “It is a very poor policy,” say officials in charge of the campaign, “to plant very poor land in cotton at all.”



**WHITEWASH FOR HEN HOUSE**

Disinfectant Given to Put Coop and F fixtures in Sanitary Condition—Use Pump.

The following disinfectant whitewash may be used to put the poultry house and fixtures in a sanitary condition: Five quarts cream of lime, one quart kerosene, one pint coal tar disinfectant and equal parts of water. This is applied with a force pump if possible, and this method will drive the material into every part of the interior of the house. The doors and windows are left open for a couple of hours in order that the fumes may be carried off by the breeze. The doors and nests are then relittered and the birds allowed to go back into the house.

**MAINTAIN A FARM WOODLOT**

Proven by Experience That 10 Percent of Farm Area Should Be Devoted to Trees.

No farm is complete without trees. All the more so in a region where that product which it is most capable of sustaining. In the case of the non-agricultural and rough farmland, a portion of it may be maintained in a farm woodlot. Experience has shown that 10 percent of the farm area should be maintained in trees, used for woodlot purposes. Still other lands may be set with trees without soil to stand, but agriculturally unproductive, and they should be devoted to special tree crops, and among these are the nut-bearing trees.

**“KAISER” PEA CHANGES NAME**

Variety Known as “Alcock’s” and Are as Widely Distributed as Liberty Bunch.

(Prepared by the United States Department of Agriculture.)

Farmers who want to buy quantities of the variety of field peas produced in many years ago by the United States Department of Agriculture from Germany, and then known as the “Kaiser” pea, will save trouble by not using that name any more. These peas are now known as “Alcock’s,” and they are as widely distributed through the North-west as Liberty Bunch, which caused the substitution in nomenclature.

## SPRAINS! RUB PAINS AND SWELLING AWAY

Don't suffer! Go about your duties—Relief comes the moment you Apply “St. Jacobs Liniment.”

Don't stay crippled! Rub this soothing, penetrating liniment right into the sprain, ache, or strain, and out comes Nothing else penetrates, heals and strengthens the injured muscles, nerves, tendons and ligaments so promptly. It doesn't burn or discolor the skin and it does not cause injury. Don't suffer! Get a small trial bottle from any drug store now—14c per bottle. Rub the misery right out. A moment after “St. Jacobs Liniment” is applied you can not feel the slightest pain or soreness, and you can go about your regular duties. “St. Jacobs Liniment” conquers pain. It has been used effectively for sprains, strains, soreness, and stiffness for 60 years—its good medals awarded.—Adv.

Misunderstanding. She—“What do you think? A bat nearly cut in my hair last night.” He—“You're lucky, Mite always gets in my feet.”

## Look out for Spanish Influenza.

At the first sign of a cold take

### CASCARA QUININE

Standard and remedy for 30 years—no better...  
 Skin Tortured Babies Sleep After Cuticura  
 PATENTS  
 W. N. U. DETROIT, NO. 12-18

### This Is Orange Blossom Time in Florida

And it's a good time to leave the Frozen North for a short Winter vacation in Florida.

Come on down to Lake Alfred and see one of the most beautiful sights imaginable—thousands of acres of Orange and Grapefruit Trees in full bloom, scattering the air for miles around.

We have a few planted small groves, but time, not yet taken, but they are better than any other you have seen. You had better hurry, for these are choice and will be sold soon.

After carefully investigating what others have done in your vicinity, under exactly similar conditions, and you have satisfied yourself that our claim that a Six or Seven-Year-Old Grove, on a conservative estimate will produce from 500 to 750 bushels of fruit per acre, you can buy with perfect safety.

If you have any questions, or wish to see our booklet, or wish to see our fruit trees, write to us for our literature, or come to our plantation.

Our groves at Lake Alfred are right on the Main Line of the Atlantic Coast Railroad, in the heart of the Highest Lake Section, the highest, safest citrus section of Florida, with Ninety Lakes within a Five-Mile Radius, and abundant and pure water, schools, etc.

Prices fair, value big, reasonable, terms. Send for our illustrated booklet, read it carefully, and then visit Lake Alfred personally.

S. K. THOMPSON, Northern Sales Manager, Florida Fruitlands Company, 45 East 42nd Street, New York City.

### DRUGGISTS! VICK'S VAPORUB SHORTAGE OVERCOME AT LAST

The Dear, Scheduled for Last November, Which Was Postponed on Account of the Influenza Epidemic, Is Now Reinstated—Good During the Month of March.

**OVER ONE MILLION JARS OF VAPORUB PRODUCED EACH WEEK**

It is with pride that we announce to the drug trade that the shortage of Vick's Vaporub, which has lasted since last October, is now overcome. Since January 1st, we have been running our laboratory plant three and a half hours out of every twenty-four. Last week we shipped the last of our back orders, and retail druggists, therefore, are no longer requested to order in small quantities only.

**NOVEMBER DEAL RE-INSTITUTED**

This deal, which we had expected to put on last November and which had to be postponed on account of the shortage of Vaporub, is re-instated for the month of March. This allows a discount of 10% on shipments from jobbers of quantities of from 1 to 4 gross. 5% of this discount is allowed by the jobber and 5% by us.

We advise the retail druggists to place their orders immediately, so that the jobbers will be able to get prompt shipments to them.

### THANKS OF THE PUBLIC DUE THE DRUG TRADE DURING THE INFLUENZA EPIDEMIC.

The thanks of the American public are certainly due the entire drug trade—retail, wholesale and manufacturing—for with their promptness and heroism during the recent influenza epidemic, the war caused a shortage of physicians—nurses were almost impossible to obtain and the demand on the drug trade was unexampled and overwhelming, and to this demand they responded nobly. Retail druggists kept open day and night and slept where they dropped behind the prescription counter, wholesale druggists kept their shelves full of the road to help fill orders—hundreds of volunteers to help Vick's Vaporub by the quickest route, regardless of expense.

Character of Community. Community, the character of any community, they determine its importance. They either limit its advance or aid it. If it isn't worth a good road, it isn't worth anything to build and maintain it. If it isn't worth anything to build and maintain it, it isn't worth anything to build and maintain it.

### 143 JARS OF VAPORUB EVERY MINUTE DAY AND NIGHT

By January 1st we had everything ready to put on our night shift, and since then our laboratory has been running day and night. To feed our automatic machines, which drop out one hundred and forty-three jars of Vaporub a minute or one million and eighty thousand weekly, has required a force of 200 people of from 1 to 4 gross. 5% of this discount is allowed by the jobber and 5% by us.

13 MILLION JARS OF VAPORUB DISTRIBUTED SINCE OCTOBER.

An idea of the work we have accomplished this fall may be given by our production figures—13,028,878 jars of Vaporub manufactured and distributed since last October—one jar for every two families in the entire United States.

During the influenza epidemic Vick's Vaporub was used as an external application in connection with the physician's treatment, and thousands of people unable to obtain a doctor, relied on Vick's almost exclusively.

Literally millions of families all over the country, from California to Maine, and from the Great Lakes to the Gulf, have found Vick's Vaporub the ideal home remedy for cough and cold troubles.

**VICK'S VAPORUB**

YOUR BODYGUARD