

# O&E golf tourney scheduled

There are places for linksmen and linkswomen of every ability in the upcoming Observer & Eccentric Open Golf Tournament.

The O&E Open, for amateur players who reside in the O&E circulation area, will be contested for the 10th year the weekend of Sept. 9 and 10 for men at Whispering Willows Golf Course in Livonia.

The men's tournament will consist of two 18-hole rounds over the 5,265-yard par-71 course.

The women's tourney, to be played Sept. 12, will consist of one 18-hole round. The course plays 5,772 yards and par 71 for women.

Both tournaments are again co-sponsored by Whispering Willows.

Golfers will be grouped according to skill levels in flights and compete for trophies and gift certificates within their own flights.

According to Gary Whitener, pro at Whispering Willows and the tournament director, flights will probably break down within the following ranges for the men's competition:

- Championship Flight—scratch to eight handicap.
- Flight 1—nine to 14 handicap.
- Flight 2—15 to 21 handicap.
- Flight 3—22 handicap and up.

Three flights for the women's tourney will be established once the entries begin to come in. Trophies will be awarded to the winners and runners-up in every flight of both tournaments for low net and low gross scores.

Gift certificates will be presented to the best five net and gross scorers in each flight of the men's tournament.

GIF certificates will be presented to the women depending on how many enter the competition.

Fees for this year's tourneys are \$24 for men and \$10 for women. Checks or money orders may be mailed with the entry coupon which appears in most editions of the Observer & Eccentric to Whitener at Whispering Willows.

Registration may also take place at the course, which is located on Newburg between Seven and Eight Mile.

Entries for the men's tourney will be cut off after 225 have been accepted. Nearly that many competed last year, the biggest turnout to date in the nine-year history of the tourney.

Unfortunately, there were only enough participants for one novice event, and no women's singles could be held because of lack of entries. Still, in the events that were filled, some exciting matches were played.

The closest of the matches was in the Men's 30 and over Singles. In a grueling, three hour duel, George Grisdale defeated Ozi Ziemba, 7-6, 6-7, 6-4.

Ziemba teamed with Jim Cahill to defeat Bill Doerr and Brad Lackey in Men's 19 and Over Doubles as the match was defaulted.

In Men's 19-29 Singles, Karl Karoub beat Randy Arnis in straight sets, while in the Boy's 14 and Under Singles David Brady topped Doug Button, 6-0, 6-1.

The Boy's 16 and Under Singles champ was Mike Schupp, who defeated Jim Nugent, 6-2, 7-5, 6-0.

In Novice competition held, Boy's 14 and Under Singles, John Slosar was the winner over Kevin Kangas, 6-4, 6-4.

In Women's Doubles play, Kathleen Meisel and Doris Boshoven teamed up to defeat Mary Lou Walsh and Karen Tweedy, 6-0, 6-0. In Mixed Doubles, Patty and George Piehl downed Fred and Elizabeth Hughes, 6-0, 6-3.

The preliminary matches were held at Farmington High School and Harrison High School, with the finals played at Farmington High.

The Southfield Department of Parks and Recreation has announced it is hosting an amateur Tennis Tournament on August 11-13.

The all-singles tournament is divided into six age groups for both male and female. All matches will be played at the Southfield Civic Center courts. Players are limited to one event each. Trophies will be awarded to all finalists.

The matches will be a best of three sets. Players will be arranged randomly in single elimination brackets.

Entry fee for the tournament is \$3; registration must be made in person at the Southfield Parks and Recreation Building before 5 p.m. Aug. 9. All 18 and under players must be available to play between 9 a.m. and 5 p.m. daily. All 19 and over players must be available after 6 p.m. daily and on weekends.

For more information, call 354-9603.

## Near net upset

GRAND SLAM TENNIS

Maurice Hunter, a resident of Hollywood, Calif., defeated Graham Snook, of Canton, 7-5, 4-6 and 6-0, to win the \$300 first prize last weekend in the Grand Slam Invitational Tennis Tournament.

Hunter, who is ranked 88th in the United States, displayed a powerful serve and volley game to down Snook in the finale of the tourney, which was contested at the Livonia Family Y.

Hunter had more difficulty in his semifinal match against Phil Norville, of Farmington. Hunter managed to squeak out a 7-5, 5-7 and 7-6 win in a two-hour test.

The doubles event was won by Norville and Bob Learman, of Bay City, who tripped Joe Fodell and Scott Davidson, of Warren, 7-6 and 6-2.

## Men's, Women's Open Golf Tournaments

Sponsored by the Observer & Eccentric Newspapers and Whispering Willows Municipal Golf Course

**MEN'S**  
36 holes medal play: Saturday and Sunday, Sept. 9 and 10. Entry fee: \$24 (greens fees, trophies and prizes).

**WOMEN'S**  
18 holes medal play: Tuesday, Sept. 12. Entry fee: \$10 (greens fees, basket of practice balls and trophies). Make checks payable to Gary Whitener, tournament director and endorse with entry blank.

NAME \_\_\_\_\_

ADDRESS \_\_\_\_\_

PHONE \_\_\_\_\_ HANDICAP \_\_\_\_\_

Men's entries close Tuesday, Sept. 5 at 6 p.m. Call for starting times on Friday, Sept. 8 after 9 a.m. (476-4493).

Women's entries close Thursday, Sept. 7 at 5 p.m. Call for starting times Saturday, Sept. 9 after 9 a.m.

Open to all residents of Livonia, Plymouth, Canton, Garden City, Westland, Redford Township, Farmington, Farmington Hills, Southfield, Birmingham, West Bloomfield, Bloomfield Township, Bloomfield Hills, Troy, Rochester and Avon Township.

Entries may be mailed to Tournament Director Gary Whitener, Whispering Willows Golf Course, 20500 Newburg, Livonia.

## TELEVISION

SERVICE SPECIAL ONLY \$5

We will pick up your television set, bring it to our shop and have it checked by our TV experts. You will then be notified by telephone of the cost of repair. If you decide not to have it repaired we will return it to your home. All for only \$5.

## USED COLOR TV'S FOR SALE

STA-RITE TV

28915 JOY RD. WESTLAND PHONE 525-5450

## MINNESOTA PAINTS

## 4-DAY HOUSE PAINT SALE



**12.99 OUR BEST!**  
**ACRYLIC LATEX HOUSE PAINT**  
• TOUGH ACRYLIC  
• NON YELLOWING  
• FADE RESISTANT  
• SUBDUED GLOSS FINISH

**13.99 OUR BEST!**  
**GLOSS ALKYD OIL HOUSE PAINT**  
• RICH FULL GLOSS  
• OIL & ACRYL  
• DURABILITY  
• MILDEW RESISTANT

**13.99 OUR BEST!**  
**GLOSS LATEX HOUSE & TRIM**  
• WARRANTED ONE COAT  
• NON YELLOWING  
• MILDEW RESISTANT  
• 50 POPULAR COLORS

**\$9.99 GALLON \$10.99 GALLON \$10.99 GALLON**

**REVERSE BOARD AND BATTEN YELLOW PINE SIDING**  
48x96—\$16.95  
Cash-N-Carry

**HAGGERTY'S 4x5 MINI-TIES**  
66¢ lin. Ft.  
8'—1' lengths



**\$195.95**  
**10x10 OUTDOOR WOOD DECK PACKAGE**  
Includes Wolmanized Southern Pine for all Necessary Beams, Joists, Fencing, and Deck Top.  
A 1010 Kit of Erecto-Pat Metal Components, Cement, 4, 30" Galv. Pipes, Galv. Nails

**WALLED LAKE: MON-FRI 8-6, SAT 8-5, SUN 10-3**  
**HOWELL: MON-FRI 8-6, SAT 8-5**

**HAGGERTY LUMBER & SUPPLY CO.**  
2055 HAGGERTY, WALLED LAKE, (313) 624-4551 OR 356-6166  
227 N. BARNHART, HOWELL, (517) 546-8320

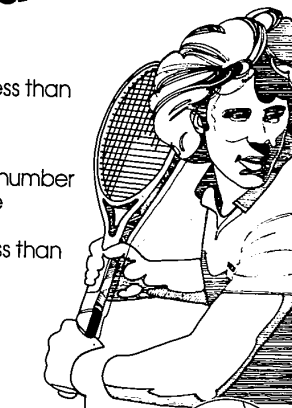
# The More You Play... The Less You Pay!

Play unlimited tennis for less than \$10.00 per week.

Centaur is offering a membership to a limited number of people that will enable you to play unlimited tennis for a low cost of less than \$10.00 per week.

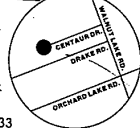
Call Mike Mehas  
Our Manager  
Phone: 661-2000

Take advantage of the savings and sign up now!



**CENTAUR RACQUET CLUB**

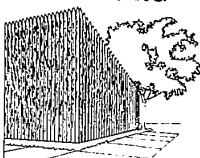
DIVISION OF INTERNATIONAL TENNIS CORP.  
5700 Drake Road  
West Bloomfield, MI 48033



## Home of Old Fashioned Service

## ENHANCE YOUR HOME

### RUSTIC STOCKADE FENCING



6 X 8 SECTIONS PRE-ASSEMBLED \$1788 C.C.

8' 4x4 Rgh. Oak Posts \$320

8' 4x4 Dressed Softwood Posts \$464

7' Peeled Cedar Posts \$175

3" Top

Check Our Low Delivered Price

### BACKYARD PROJECT



5' PICNIC TABLE

ALL YOU NEED IS A HAMMER AND SAW AND JUST A LITTLE TIME. ALL WOOD AND NAILS INCL.

\$1788

INCLUDES 2 x 10 SEATS AND TOPS

SEE OUR OTHER MODELS AND SIZES TO 8' ON DISPLAY

### AMERICA'S FAVORITE REDWOOD STAIN

\$3.00 OFF!



OLYMPIC REDWOOD STAIN

#704

BUY IT NOW WHILE SUPPLIES LAST

NO LIMIT

Give the garage back to your car!

### Store it in Arrows new dynamic storage shed



**NORTHPORT**

MODEL NP6XS

\$10888

6' x 5' NOMINAL SIZE

ALSO IN STOCK: 6'x10' 9'x10' 14'x10' (10 FT. ENTRANCE ELEVATION)

### For Wood Gourmets

A new shipment of beautiful black walnut, cherry, maple and oak.



BROWSE AROUND OUR STORE AND SELECT YOUR OWN

PRICES ARE PER LINEAL FOOT

	1/2X4	1/2X5	1/2X6
OAK	1.00	1.25	1.50
WALNUT	1.35	1.65	2.00
CHERRY	1.00	1.25	1.50

1/2x6 RUSTIC PINE 27' LIN. FOOT

## SALEM LUMBER CENTER

Your Neighbor Shops Here

30650 PLYMOUTH ROAD  
GA 2-1000

Monday thru Friday 9 a.m. - 8 p.m.  
Saturday 9 a.m. - 5 p.m.  
Sunday 10 a.m. - 5 p.m.  
Shed open Monday, Thurs., Fri. 10 a.m. - 5 p.m.

