

# Feel the rhythm—go from there

Story: CORINNE ABATT  
Photos: DICK KELLEY

A group of fifth and sixth graders from Pembroke and Midvale elementary schools recently had their moment in the spotlight.

They became part of the cast, playing themselves, of a 30-minute movie commissioned by the American Orff Schulwerk Association. The film is being made by MICA (Maine Independent Cine Arc), and it focuses on the Orff process of music education. But even education is a bit structured a term for the program and kind of learning enjoyment which the Orff process fosters.

"The approach is rhythm," said Betty Morris, vocal music teacher at Pembroke and Midvale. "We use a lot of different instruments like glockenspiels, xylophones, recorders and drums."

Explaining that these rhythm instruments are the base for a variety of expressive, creative forms, she added, "I think it's fantastic, the most exciting thing to come along in music in a hundred years. The kids are moving, creating, improvising instead of just sitting up and singing."

THE TWO Birmingham grade schools, along with Brookside in the Cranbrook Educational Community, are among a dozen or so across the country picked to be in the film which will be used by PTAs, colleges and teacher training projects. It will be circulated in many parts of the world to illustrate the Orff philosophy.

In planning the segment which was photographed last week, Ms. Morris asked Claire Levine, Academy of Sacred Heart dance instructor, to develop some movements to go

with the poem, "Sky Dwellers" by Sister Marsha Lutz, the theme around which the action was centered.

Ms. Morris explained the Orff philosophy stresses that creativity "grows like a wildflower and you are never sure what it will turn out to be of how it will look."

As a vocal music teacher of something over 30 years, Ms. Morris has seen the fruits of the Orff planted seeds.

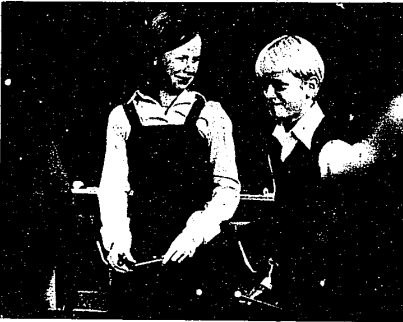
"Some 87 per cent go on to study an instrument. There are no discipline problems and I have seen some very good musical compositions come out of this experience. By sixth grade, a lot of the students are coming to me with compositions that are so good, they blow my mind."

While the students in the film would probably like to see the finished product tomorrow, if not before, they will have to wait until sometime next year.

Ms. Morris, who noticed the film crew seemed to be enjoying the project as much as the youngsters involved, said that the crew had set up in Connecticut, Ohio, New York and other states.



They work the low angle in the film for which local arrangements were made by Brookside music teacher Carolyn Tower.



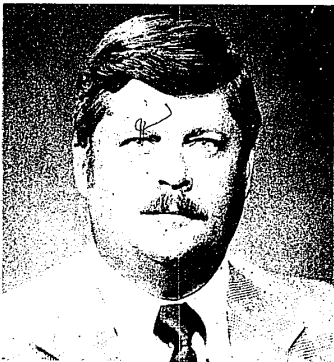
Nobody but Cheryl Tomblinson and Greg Mallek will ever know if those expressions are camera fright or a bit of first class acting.



Director Abbott Meader, left, explains the kind of approach he would like to cameraman Huey (full name).

## ★ Re-Elect DENNIS MURPHY ★

★  
COMMITTEES: (2nd Term)  
—Finance - Vice Chairman  
—Health & Human Resources  
—Special Judiciary  
—County Car Policy



★  
"PREFERRED AND WELL-QUALIFIED"  
(Primary and General Election—Oakland Citizens League)

★  
Republican Delegate—County and State Conventions 1974 thru 1978

"Dennis Murphy is for keeps. You can count on him serving the full term of office"

★ County Commissioner ★ MURPHY ★ District No. 24 ★

REPUBLICAN

Dennis Murphy Comm #1711 Bercharl Novi, MI.

## Ski fitness class starting

The Farmington YMCA is concerned about the number of persons who are not in condition to ski and is offering a six-week, 12-class program to put them in shape for the slopes.

The sessions will run at 7 p.m. Tuesdays and Thursdays, starting the week of Nov. 7.

Kay Burns, the Y's fitness specialist says that good physical conditioning is the most important factor in the prevention of ski injuries.

Registrations are taken by calling the Y at 553-4020.

**Philip B. Thomas, Inc.**  
Specializing in Personalized Custom Designing & Creative Styling of Jewelry  
Authorized Dealer, Citizen Watch

We are proud to announce  
**ROBERT F. WILLIAMS**  
has joined our staff

**RESTRING JEWELRY REPAIR REMOUNTING WATCH • CLOCK REPAIR 478-9050**  
33425 Grand River Suite B1  
Side Entrance  
Mon-Sat 9:30-5:30  
CLOSED WEDNESDAY

**McCabe**  
Funeral Home

31950 12 MILE RD., FARMINGTON HILLS, MI.  
Phone: 553-0120

DETROIT LOCATION:  
18570 GRAND RIVER AVE • Phone 836-3752

**BERNINA**

- SWISS CRAFTSMANSHIP
- SELF ADJUSTING TENSION
- AUTOMATIC BUTTON-HOLDER
- BUILT-IN STEEL CAMS
- ELECTRONIC NEEDLE POWER
- STRONGER STRETCH STITCHER
- SINGER, ELNA, OR PFAFF

COME IN FOR A COMPLETE DEMONSTRATION AND FIND OUT HOW EASY SEWING CAN BE

**a&m**  
3353 PLYMOUTH RD. LIVONIA 425-2120

**7 Mile & Farmington shopping center**  
Home of **O'BRIEN'S**  
Man's World

**Health-tex® Fall National Sale**

**Infants Boys & Girls**  
Sizes 9 to 24 Mos.

Coveralls Reg. to \$7.50 **\$5.49**

Rompers Reg. to \$6 **\$3.99**

**Toddler Boys**

Corduroy Slack Sets Sizes 2 T - 4 T Reg. to \$9 **\$5.99**

**Boys**

Knit Shirts Solid or Pattern Reg. to \$6 **\$3.99**

Slacks Corduroy or Woven Assl. Patterns Reg. to \$9 **\$4.99**

**Girls Sizes 4 - 6X**

Knit Shirts Solid or Pattern Reg. to \$6 **\$3.99**

Boxer Slacks Solid or Pattern Reg. to \$6 **\$3.99**

Slack Sets Corduroy Reg. to \$10.50 **\$7.49**

**Name Brand Selected Fall Co-Ordinate Sportswear for Girls**  
Slacks • Shirts • Tops  
Sweaters, Etc.

**1/3 OFF**  
Original Prices

**Selected Fall Dresses**  
Poly Flinders  
Nannette  
Love, Etc.

**Selected Fall Dresses**  
Poly Flinders  
Nannette  
Love, Etc.

**1/3 OFF**  
Original Prices

**Pixieland**

**BRIGHTON MALL**  
227-6066  
Daily 10-9; Sun. 12-5

**Livonia's NEWBURN PLAZA**  
464-6500  
Mon.-Fri. 10-9  
Sat. 10-6

**FARMINGTON PLAZA**  
474-7900  
Mon., Thurs., Fri. 9:30-9  
Tues., Wed., Sat. 9:30-6

## CAR LOANS

**SHOP -COMPARE-SAVE**  
METRO BANK-AUTO LOAN RATES

MONTHS TO REPAY	24	36	42	48
ANNUAL PERCENTAGE RATE	10.00	10.50	11.00	11.50

THESE RATES APPLY ONLY TO THE FINANCING OF NEW 1979 AUTOMOBILES AND ARE SUBJECT TO A 20% DOWN PAYMENT AND BANK CREDIT APPROVAL. THEY MAY BE SUBJECT TO CHANGE OR WITHDRAWAL AT ANY TIME WITHOUT PRIOR NOTICE.

Call 553-4200 to get Exact Payments & Cost on Your Deal

Metro Bank also finances Used Cars, Commercial Vehicles, and Recreational Vehicles at similar low Bank Rates.

**LOW INTEREST RATES - ONE MORE GOOD REASON TO BANK WITH METRO BANK.**

**METROPOLITAN NATIONAL BANK OF FARMINGTON**  
FARMINGTON'S ONLY COMMUNITY BANK  
Locally owned - Locally Managed - Locally Staffed

Farmington Hills Office  
27500 Farmington Road

Telephone 553-4200

Farmington Office  
33205 Grand River

MEMBER-FEDERAL DEPOSIT INSURANCE CORPORATION