

During snow season

Indoor recreation fills the bill

(Continued from page 3A)

times for non-league bowling at Drake-shire. Fees include 95 cents for a line of bowling, and \$1 for shoes. Of the \$1, 50 cents is a refundable deposit. There are pool tables available for those over 21-years-old. A cafeteria is open between 10 a.m. to 11:30 p.m. There is a cocktail lounge, too.

Bol-Aire Lanes, 24001 Orchard Lake Road, one block south of 10 mile has a playground children of league members. The lanes are open from 9:30 a.m. to 2 a.m. every day. Non-league bowling is available during weeknights and week-ends. The lanes are closed on Sunday at 11:30 p.m. Daytime fees during the week are 85 cents a line. Evenings and weekends

fees are 95 cents a line. There is a cocktail lounge.

Country Lanes, 30250 Nine Mile, Farmington is open from 10 a.m. to midnight during the entire week. Open or non-league bowling is available from 10 a.m. to 6 p.m. on weekdays on Saturday until 7:30 p.m. and on Sunday until 4:30 p.m.

Fees for a line are 90 cents before 6 p.m. and \$1 afterwards. Shoes rent for 50 cents.

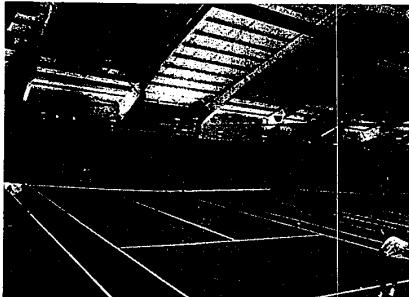
The grill is open during business hours. The lounge opens at 4 p.m. on weekdays and 1 p.m. on weekends. There are nursery facilities for children of league members.

Farmington Lanes, 32315 Grand River, Farmington are open from Sunday to Friday from 9 a.m. to midnight. On Saturdays they are open from 9 a.m. to

1 a.m. There is open bowling on Sunday from 9 a.m. to 5:30 p.m. and on Saturday from 10:30 p.m. to 1 a.m. Friday morning there is open bowling from 9:30 a.m. to noon. There is no bar. Fees are 90 cents for a line of bowling and 50 cents to rent shoes. There is nursery care for children of league members from 9:30 a.m. to noon on weekdays.

Norwest Lanes, 32905 Northwestern Highway, Farmington, is open from 10 a.m. to 2 a.m. Monday through Friday and from 8 a.m. to 2 a.m. on Saturday and Sunday.

There is open bowling in the daytime and weekends. An adjoining pizza place is open from noon to midnight on week-ends and from 3 p.m. to 1 a.m. during the week. Shoe rental is 60 cents. There is a bar.



Tennis is always a popular way to pass the time during the winter months, especially now that indoor courts are in vogue. (Staff photo)



Tony Troiani smacks a racquetball back to John Bartoletti. Both say they play daily during the winter and have played for more than three years. (Staff photo)

Boys to get hair dryers

Male students at Clarenceville High School won't have the wet look after gym classes.

Thanks to the efforts of Teacher Karen Oliva and the understanding of the school board Thursday, the boys' locker room soon will have two hair dryers installed.

Mrs. Oliva asked for dryers because she felt the boys were being slighted according to Title IX (federal equal op-

portunity rules) since there were dryers in the girls' locker rooms.

She had requested that three be installed, but at a price of \$500 each, the board decided to approve the purchase of only two.

The dryers will be mounted on the locker room wall after a location is approved. Installation will be in addition to the \$500 per unit cost.

Area salesmen picked for show

Richard Bell, Ray Richards and Jeff Seit of Town and Country Dodge, Inc., 31015 Grand River have been named to a special greater Detroit area team of representatives who will welcome and assist visitors during the Detroit Auto Show at Cobo Hall, Jan. 13-21. They'll be in the Dodge car and truck exhibits at the mammoth 63rd annual auto industry showcase.

Consolidating Holiday Expenses?

As a homeowner you may qualify for an **EQUI-LOAN**

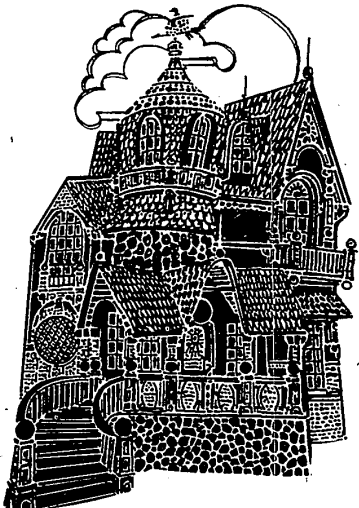
Regency Programmable **Police Scanner**
10 channel No crystals to buy **149⁸⁸**
Lafayette
RADIO ELECTRONICS ASSOCIATES STORES
12 Locations to Serve You

7 Mile & Farmington shopping center
Home of **JPerry** 474-3330
The Good News Drug Store

3/4"x12" 6" **\$219** EACH Reg. \$2.45
SHELVING
FARMINGTON LUMBER CO. 32800 GRAND RIVER 474-4015

Appliance & Porcelain Refinishing Co.
Bathubs Reglazed *on site* IN YOUR HOME Guaranteed
Refrigerators Refinished IN YOUR HOME
Ranges & Panels Reglazed
Vent Hoods Washer-Dryers Dishwashers
20113 Westborough Southfield, Mich. 48075 353-1180

INCOME TAX
Fast Professional Service
Experienced Counselors
Guaranteed Accuracy
Comfortable Private Interview Rooms
Service By Appointment-No Waiting
Most Returns Under \$35
Free Estimates
Charles H. Williams, P.C.
Certified Public Accountant
29625 Grand River Avenue (1 Block West of Middlebelt)
Farmington Hills • 478-7440



WHAT IS AN EQUI-LOAN?
An Equi-Loan is a second mortgage secured by the equity in your home. By using your home equity, you can borrow \$2,500 or more with liberal repayment terms at simple interest rates.* An Equi-Loan is not a remortgage, but a second mortgage; it will therefore not alter your present mortgage or its rate.

The amount of equity in your home, by the way, is the difference between its appraised value and your first mortgage (if any). This equity provides the basis for borrowing a large amount of money at established simple interest rates with the maximum amount of the loan being determined by the size of your equity.

*WITH A SIMPLE INTEREST EQUI-LOAN YOU HAVE THE OPTION OF SIGNIFICANTLY REDUCING THE AMOUNT OF INTEREST YOU PAY.

HERE'S AN EXAMPLE OF THE AMOUNT YOU CAN EXPECT TO BORROW.

*Each transaction is different and subject to credit approval, however, we are flexible in our lending policy. In general, you can expect that the total of your first and second mortgage will amount to 80% of our valuation of your home. For Example:

Appraised	Valuation \$30,000
	x 80%
	Total Loan Value \$24,000
	1st Mortgage Bal. -\$12,000
Available for	2nd Mortgage \$12,000

HERE'S HOW TO APPLY FOR AN EQUI-LOAN

The procedure is much the same as it is for a personal loan. Simply stop in our office at the address listed below. Or you can call your hometown banker at any of the locations below and discuss plans with a trained loan executive. An appointment can be made if you like.

Your Hometown Bank

* Our Drive-In Facility is open 62½ Hours per Week
Monday thru Friday 9 a.m. to 8 p.m., Saturday 9 a.m. to 4:30 p.m.
Open Monday thru Friday Evenings 'til 8 p.m. for Your Banking Convenience
Full banking service all day Saturday, Drive-In & Lobby Open 4:30 p.m.



Michigan National Bank

Farmington OFFICE LOCATIONS

- *Orchard Lake Rd. & 10 Mile 477-3330
- *9 Mile & Farmington 478-4332
- Grand River & Drake Rds. 478-7470