

Elegant suites await luxury-conscious travelers

By MARY GNIEWEK

Elegance comes in both traditional and modern styles in Farmington, where \$75 to \$100 a night buys the height of luxurious living.

Those are the prices of overnight accommodations at Botsford Inn's presidential suite and Holiday Inn's sixth-floor penthouse, respectively.

Both inns are relative newcomers to the penthouse business, having opened their top-of-the-line quarters for public pursuit just a year ago.

The presidential suite at historic Botsford Inn, on Grand River near Eight Mile, can be approached two ways. From inside the hotel, it is at the end of a long corridor in a first-floor addition built seven years ago.

Its prominence is immediately apparent. While gold numbers on doors identify rooms to its left and right, the suite has a gold eagle hung above the entranceway and leaded glass panels on either side of the door.

A separate entrance from outside the inn opens into a long library, stocked with 1,000 hard covered books, many from the personal collection of auto magnate Henry Ford.

The Fords owned the inn until 1951. It was built in 1836, converted into a tavern in 1841 and acquired by Milton Botsford in 1860. Ford bought it in 1924 and restored it. In 1951, the Ford family sold to present owner John Anhut.

THE SUITE LIBRARY also contains books left by John Anhut Sr., an attorney and Detroit hotel owner. Among the books that fill the glass enclosed floor-to-ceiling bookcase are the complete works of George Eliot, and volumes of "Modern Eloquence" and "Lands & Peoples."

Some of the furniture in the main room, like the solid oak dining room table and an intricately carved straight back wooden chair, are from Henry Ford's Fairlane Estate. Other pieces, such as a black walnut desk, belonged to Anhut's father.

"Most of our business is honeymoon-

ing couples, or companies renting the suite for a party," Anhut said.

Famous past lodgers have included Gov. William Milliken.

The focal point of the spacious living room is a large natural fireplace. There is a modern couch, two comfortable black leather chairs (they cost \$300 each, Anhut says) and a smattering of antique chairs, lamps and tables.

The television set looks out of place in the predominantly gaily American setting.

King size does not adequately describe the size of the bed that dominates the bedroom. It's enormous. Also in the bedroom: a roccoco cabinet that holds a bust of George Washington on one of its three shelves.

The apartment also has a bathroom with marble counters, a kitchen equipped with appliances, and a work area with washer and dryer. Closet space is abundant.

Anhut established the apartment originally as a home for his parents, John and Elizabeth.

"We don't try to be like anyone else," he said.

The presidential suite testifies to that.

mfURTHER DOWN the road, at Grand River and Ten Mile, new Holiday Inn owner Jerry Abel is building a three-story addition that will include a penthouse. It's slated for a June completion.

The hotel already has two penthouse suites. One of which is permanently occupied by Jim Hamilton, who operates Jimmy's, the hotel bar and restaurant.

"The other one is rented at our discretion," Abel said. "Usually to stockholders or corporate executives. We use it as we see fit. We haven't solicited business."

Abel bought the hotel a year ago and asked hotel sales director Kathy O'Meara to redesign the two suites. She did it with the help of Marilyn and Pete Toomey of the Be Seated store in Dearborn.

The only access to the penthouse is through a fifth-floor stairway. The public elevator only goes to the fifth floor. Modern decor, highly patterned and

stylized, is the theme of the Holiday Inn penthouse. The rooms seem to jump out like a picture from Better Homes & Gardens magazine. Everything is tastefully done and immaculately clean.

Brown, beige, black and white is the color scheme that dominates the furniture, walls and floors. Metallic wallpaper follows the same color scheme in geometric block design.

The living room has sectional beige couches, chrome lamps and modern paintings hung on the walls. Large windows and live hanging plants in macramé holders lend a homey feeling to the apartment.

The kitchen has all the latest built-in appliances, including a microwave

oven. It is separated from the living room by a snackbar. One counter is stocked with mixes, but no hard liquor, though Ms. O'Meara said guests can imbibe spirits if they so choose.

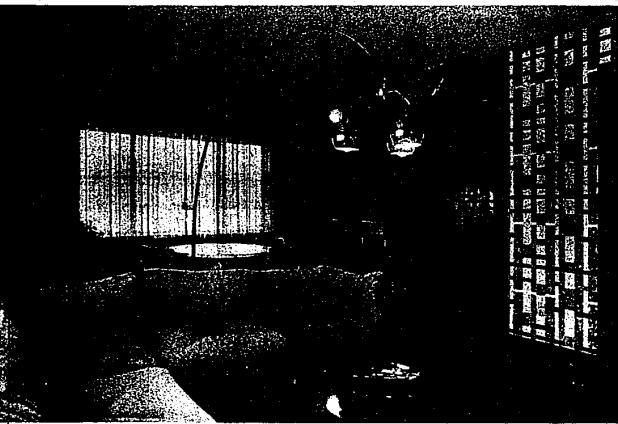
A small round dining room table, with wickerback chairs, is situated nearby another window. The bedroom is done in the same color scheme as the rest of the penthouse. It has a king-size bed, large mirrors and more plants.

"It was fun to decorate," said Ms. O'Meara, admitting it was her first such experience.

Though the penthouse isn't always accessible to the average person on the street, she said the new penthouse will be available to anyone who can pay the price.



The Botsford Presidential Suite represents a more traditional style.



Styles vary, but elegance is always evident in the penthouse of the Holiday Inn. (Photos by Allen Schlossberg)

Suburban Mental Health Clinic, P.C.

- Outpatient services for Personal, Marital and Family Problems
- Inpatient services at accredited local hospitals
- Staff are certified and/or licensed Social Workers, Psychologists and Psychiatrists
- Additional services include Phobia Clinic and Alcoholism Clinic

For an appointment call Executive Director 553-3030

Quakertown Medical Arts Center
32905 W. Twelve Mile Rd.,
Farmington Hills, MI

Mon. through Thru. 9 to 9, Fri and Sat. 9 to 5

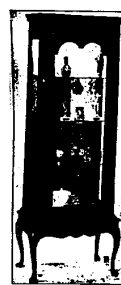
FINE FURNITURE SINCE 1917

Beautiful Curios SPECIALLY PRICED for our WINTER SALE



25"x15"x72"H

Special \$339



25"x15"x68"H

Special \$299

These solid cherry curios offer a beautiful way to showcase all of your treasured collectables. The delicate design is enhanced by adjustable glass shelves, an interior light and a door lock and they are very specially priced for one week only.

In stock for immediate delivery—Limited quantities.

Stinson Furniture

Stagecrafters open next play Feb. 16

"Butterflies are Free," a poignant and touching drama about the relationship between a young woman caught up in today's world and a young man trying to overcome his blindness, is the Stagecrafters next production.

The community theatre group will present the play Feb. 16-17, 22-24, and March 1-3, in Stagecrafters Playhouse, 176 Bowers, Clawson.

Tickets are \$3.50 each and all seats are reserved. Reservations and ticket information is available by calling the box office, 585-8437.

Farmington Observer

USPS 187-840

Published every Monday and Thursday by the Observer & Economic Newspapers, 36251 Schooncraft Rd., Livonia, Michigan 48150. Second-class Postage paid at Livonia, Michigan 48151. Address all mail (subscriptions, change of address, Form 3579) to P.O. Box 2428, Livonia, Michigan 48151. Telephone 591-0500.

HOME DELIVERY SERVICE
Newsstand.....per copy, 25¢
Carrier.....monthly, \$125

CARIBBEAN DESTINATIONS
Still Available

- Charters • Cruises
- Tours • Airline

Tickets • (No Service Charges)
CAROUSEL TRAVEL
24359 Halstead (in the Concord Ctr.)
Farmington Hills • 477-8200

7 Mile & Farmington shopping center
Home of Sanders

ENROLL YOUR CHILD NOW

Services include: • Full day care • Pre-school Education program • After school up to 12 years • Transportation to and from school • Open 7 a.m.-6 p.m. • Hot, nourishing meals and 2 snacks.

KinderCare®

NOW OPEN

Kinder Care offers a truly educational program that features learning thru educational play, field trips, arts and crafts, music, reading and writing readiness to help prepare your child for entry into primary grades.

- Full Day
- Half day
- Drop In
- After School Program
- Summer Day Camp

FOR THE PRE-SCHOOL TIME OF THEIR LIVES
Visit or Call Kinder Care. Meet Our Professional Staff
Director: Pamela Richards
25354 Evergreen
Southfield
357-3390

KinderCare®

inter-continental-interiors
STORE WIDE WINTER SALE
10% TO 40% OFF ENTIRE STOCK
SAVE UP TO 15% ON ALL CUSTOM ORDERS

\$997.00

Man's Chest 48" Wide 44 1/2" High 18" Deep
Triple Dresser 75" Wide 23" High 18" Deep
Queen Size Bed 103" Wide

The bedroom shown represents an outstanding value now in stock at House of Denmark. The bed is queen size and includes attached night-tables, platform and headboard complete. The triple dresser and man's chest feature a multitude of deep drawer space and adjustable shelving. Specially priced during our sale at only \$997.00 for all 3 pieces shown.

house of denmark
893 SOUTH ROCHESTER ROAD • ROCHESTER
TUE, WED, SAT, 10:00-5:30 THUR, FRI, 10:00-9:00
SUN, 12:00-5:00 CLOSED MONDAY 651-9430
INTERIOR DESIGN SERVICE AVAILABLE

CALL OR WRITE FOR FREE COLOR BROCHURE