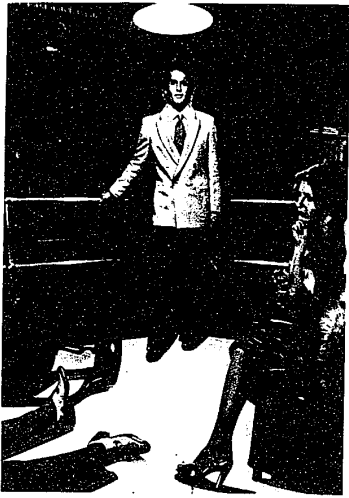


Miller



*the gentle art of knocking 'em dead.  
Best expressed as the DH factor. Only  
Doug Hoffman has it. From Giorgio Armani,  
Maxxato + Calvin Klein to Sonelli +  
Jomase, Doug Hoffman has it.  
The DH factor. Come and get it.*

*the DH factor only at*  
**doug hoffman LTD dh**

1000 Peachtree Street, N.E., Suite 1000, Atlanta, Georgia 30309



John Thawley choreographed his fall collection recently at Oscar's and treated his delighted guests to a timeless collection of collectibles. On left, his all wool flannel, three-piece rich fit suit comes with slanted pockets, pleated and cuffed pant, and low, four-button vest in banker's grey. Center, his touchable textures

come in luxe wool blue, navy, and black. Right, a classic double-breasted, double-pleated, double-buttoned suit with patch pockets, single-breasted vest in banker's grey, pleated and cuffed pant in Linda Solomon

## Bogart, Bond revival

# Put your look on ice

Contemporary clothing with a Bogart flavor using a James Bond theme — the styles stunned an appreciative audience at Oscar's

The occasion was a celebration of the United Artists 007 movie "Moonraker" at a party launched at Oscar's. Contemporary foods served in spaced-out motifs helped to set the mood as did the foggy cloud that spaced the disco dance floor from the agog audience as models posed in John Thawley's clothes.

Thawley choreographed his fall fashion showing for men against the backdrop of a movie screen which flashed spacey scenes from the new movie.

About his designs Thawley said, "I am following the direction conceived by Armani but have translated it into a constructed garment instead of an unconstructed look."

"It is a look," he said, "that lends itself to business but can also carry through to sportswear." Thawley has used many buswing backs in his jacket along with a lower button stance to achieve the newer geometric V shape. The shoulder width on the jacket then tapers down to a pegged and cuffed pant.

The attractive designer combines his sportswear looks with easy fitted sport shirts in all-cotton or silk. Collars are smaller on both shirts and jackets. Thawley describes his contemporary classics as

clothes that have a classic feel, also of practicality.

FOR FALL, Thawley's sportswear includes a variety of tweed, basketweave, and herringbone fabrics, some of which are sent down to the audience in blinks.

He has been using a new shape for a jacket, a new shape for a shirt, and as he said, "a new shape for a more aggressive look."

The Birmingham-based classes are taking place, they go from 10 to 11 p.m.

During the party, the clear time of the night, the audience with a clear time of the night.

Both Bogart and Bond

**THE RALEIGH** A calfskin slip-on with tassels and hand laced quarters. Available in Black, Rosemoor, or Dark Cherry.

**\$79.50**

Fairlane Towne Center, Lakeside Mall, Twelve Oaks Mall

**THE Johnston & Murphy SHOP**

## Premier Engagement.

John Thawley

