

Day classes offer variety at community school

Whether it be sharpening business skills, learning new ways of cooking or brushing up on bridge, the Ten Mile Community School is offering a variety of classes during the day for fall.

All classes, unless otherwise indicated, begin Sept. 24. Those interested can register before the first class period or by mail using the registration blank.

Registrations will also be received at Ten Mile Community School from 8:30 a.m. to 4 p.m. or from 7-9 p.m. Mondays-Thursdays, through Sept. 28.

Refunds will be granted when classes are cancelled. All other requests for refunds must be made to the community education office before the second class meeting. A \$2 registration fee will be deducted in the case of withdrawal.

Farmington School District resident senior citizens (60 or older) are eligible for free or reduced registration fees, except in limited enrollment classes.

CERAMICS — Tuesdays 9:30 a.m. to noon, room 1, \$20. Take a plastic bag to the first class. An \$8 materials fee is due to the instructor at the first meeting.

DRAWING AND SKETCHING —

FRIDAYS, 10 a.m. to noon, room 1, \$18. Take a 19-by-24-inch newspaper pad and soft pencils.

MACRAMÉ — Wednesdays, 1:30-3:30 p.m., room 1, \$18. Bring three-ply jute or number 72 seine cord, rubber bands, 7 pins and macrame pad.

BEGINNING AND INTERMEDIATE PAINTING — Tuesday, 12:30-3 p.m., room 1, \$20. Students furnish own supplies.

ACCOUNTING AND BOOKKEEPING I — Wednesday, 10 a.m. to noon, room 7, \$18 plus book cost. Books sold at first class meeting.

ACCOUNTING AND BOOKKEEPING II and III — Monday, 10 a.m. to noon, room 7, \$18. Same book used as in beginner class.

BEGINNING TYPING — Tuesday and Friday, 9:15-11 a.m., room 2, \$30. Class begins Sept. 18.

TYPING REVIEW — Wednesday, 1-3 p.m., room 2, \$18. Electric typewriters used. Bring paper.

SHORTHAND REFRESHER — Monday, 1-3 p.m., room 2, \$18. This is a refresher course in Gregg Shorthand. Go prepared with a notebook.

CAKE DECORATING — Wednesday, 1-3 p.m., kitchen, \$18. A small ma-

terials fee. Bring notebook and pencil.

MICROWAVE COOKING — Thursday, 1:30-3:30 p.m., kitchen, \$12. \$6 materials fee. Begins Sept. 27 and lasts for four weeks.

ADVANCED MICROWAVE COOKING — Thursday, 1:30-3:30 p.m., kitchen, \$12. \$6 material fee. Begins Oct. 25 and lasts for four weeks.

GOURMET EUROPEAN COOKING — Monday, 1-3 p.m., kitchen, \$18. \$10 materials fee.

FRENCH MOROCCAN COOKING — Tuesday, 12:30-2:30 p.m., kitchen, \$18. \$10 material fee.

CHINESE COOKING — Wednesday, 10 a.m. to noon, kitchen, \$18. \$10 materials fee.

DISCO DANCING — two classes on Wednesday, 11:30 a.m.-1 p.m. and 1:15-2:45 p.m. in the gym, \$15.

SLEIMMING THROUGH MODERN DANCE — Wednesday, 10-11:30 a.m., gym, \$15. Knowledge of modern dance is required.

SLEIMNASTICS — Thursday, 9:45-11:15 a.m., gym, \$15.

PRESCHOOL DANCE I — Monday, 2-3 p.m., gym, \$12. A special hour designed for the 4-6-year-old in tap, ballet and tumbling.

REGISTRATION BLANK

CLASS NUMBER & TITLE	DAY	TIME
CLASS NUMBER & TITLE	DAY	TIME
NAME		
ADDRESS	CITY	ZIP
PHONE NUMBER	WORK OR ALTERNATE	
"NON-RESIDENT CITIZEN" CARD #	TOTAL FEE	

Mailed to: Farmington Community Education, 2759 16 Mile Road, Farmington, Michigan 48104

MAIL CHECKS PAYABLE TO: FARMINGTON PUBLIC SCHOOLS

CHILDRENS DANCE II — Monday, 3:30-4:30 p.m., gym, \$12. Children with some dance background in tap, ballet and acrobatics.

KARATE — Tuesday, 3:30-5:30 p.m., gym, \$18. Isshin-Ryu Karate. Class taught by fourth degree black belt instructor.

YOGA — Thursday, 10 a.m. to noon, room 9, \$18. Anyone with a history of back complaints should consult their doctor.

SQUARE DANCING — Thursday, 1:30-3:30 p.m., \$18 single, \$35 a couple. Instructor is member of Michigan Square Dance Leaders Association.

EATING FOR GOOD HEALTH AND NUTRITION — Tuesday, 10 a.m. to noon, room 4, \$10. A new approach to good eating. Class is four weeks.

CPR — Three sessions, Tuesdays, 10 a.m. to 1 p.m. Session I, Sept. 25, Oct. 2, 9; Session II, Oct. 16, 23, 30; Session III, Nov. 6, 13, 20. Registration fee of \$3 includes materials. Register in advance.

FIRST AID — Thursday, 10 a.m. to 1 p.m., room 7. Three sessions. Session I—Sept. 27, Oct. 4, 11; Session II, Oct. 16, 23, Nov. 1, 8; Session III, Nov. 8, 15, 22, 29. Please register in advance.

DRAPERY MAKING — Thursday, 1-3 p.m., room 9, \$18. Some sewing may be done in class.

CREWEL EMBROIDERY — Monday, 1-3 p.m., room 9, \$15. Seven-week class—Sept. 24-Oct. 22 through Nov. 26.

PATTERN DARNING — Monday, 10 a.m. to noon, room 9, \$12. Kit about \$15. Five weeks, begins Oct. 22.

NEEDLEPOINT — Tuesday, 10 a.m. to noon, room 4, \$12 and kit. Teacher will provide materials (about \$12). Five weeks.

NEEDLEPOINT II — TUESDAY, 1-3 p.m., room 4, \$12 and kit. Partial kit provided \$5. Five weeks.

QUILTING — Tuesday, 10 a.m. to noon, room 9, \$18. Bring scissors and thimble.

BRIDGE, BEGINNING — Thursday, 1-3 p.m., room 8, \$18. Bring a deck of cards.

INTERMEDIATE AND SUPERVISED BRIDGE — Tuesday, 1-3 p.m., room 8, \$18.

FRENCH I — Conversational. Tuesday, 10 a.m. to noon, room 4, \$18.

SPANISH I — Conversational. Monday 12:30-2:30 p.m. Room 10, \$18.

Walled Lake enrollment decline expected to continue this year

Declining enrollment continues to plague the Walled Lake School District.

The district, which includes the western portion of West Bloomfield and the northwestern section of Farmington Hills, has experienced a steady decline since 1976.

The trend is expected to continue this year.

In 1976, enrollment figures reached an all-time high of some 11,600 students in grades K-12.

At the start of school, Assistant Superintendent of Business Harry Carlson projected that enrollment this year would decline by approximately 400 students from last year's level of 11,051.

But now even that projection appears to have been optimistic.

Carlson had projected that this year's K-12 enrollment would be 10,664 — a drop of 387 students.

The most recent enrollment figures show that total K-12 is only 10,532 students—132 fewer than projected and 519 students fewer than last year.

The student enrollment is an important factor in the district's shaky financial picture because it is an important element in the formula on which state aid payments are based.

The STATE aid formula guarantees each school district some \$1,663 per student. A decline in enrollment means

fewer state aid dollars.

Carlson emphasized that the latest enrollment figures for the present year are still incomplete.

The enrollment figures were tabulated last Monday. State aid payments will be based on the official student count on the "Fourth Friday" of the school year.

The importance of enrollment is illustrated by the fact that administrators keep careful track of the student count from the first day of school.

Carlson also stated that he expects the district will find some more students before the official fourth Friday count is tabulated.

Council agenda

(Continued from page 1A)

- Resolution from city of Madison Heights in support of waiving postal fees for absentee ballots

Reports from City Manager

- Oakland County at-large drain assessment

- Final plat approval: World Wide Subdivision

- Authorization to install shower: Public Safety Training Center.

- Proposed Ordinance to amend uniform traffic code

- Proposed rate schedule for cemetery marker foundations
- Miscellaneous
- Public Comment

- Farmington Historical Commission Annual Report

- Financial report general fund, two months ended Aug. 31

- Financial report, 47th district court, two months ended Aug. 31

- Resolutions and Ordinances
- Introduce Ordinance C-451-79 granting franchise for cable TV to Omnicon of Michigan

- Introduce traffic ordinance C-452-79 amending traffic code

- Adopt resolution establishing cemetery marker foundation rates.

Appearing Now

DEAN RUTLEDGE
Tuesday-Thurs. 7-12
Fri & Sat. 8-1

Schuler's
FOOD TO GO WITH YOUR FUN & SPIRITS

6066 W. Maple Rd.
W. Bloomfield
851-8880

... just beautiful things for your home

L.B.S. Professional Interior Design
See the entire Howard Heritage line in coordinated room settings—complete accessories. Fine ideas galore!

Ray Interiors

MICHELE'S FURNITURE & HOME STORE
2383 S. COLBY FARMINGTON Phone 476-7272

Everything you need is available at

PLYMOUTH TOWNE APARTMENTS

Enjoy healthy independence in this beautiful new complex.

One and two bedroom apartments for Senior Citizens including:

- Two meals
- Housekeeping services
- Linens
- Transportation
- Optional social activities
- Medical services

Now Taking Reservations
Call or visit

The Plymouth TOWNE APARTMENTS

107 Haggerty Road
Plymouth, Michigan 48170
(313) 455-0510



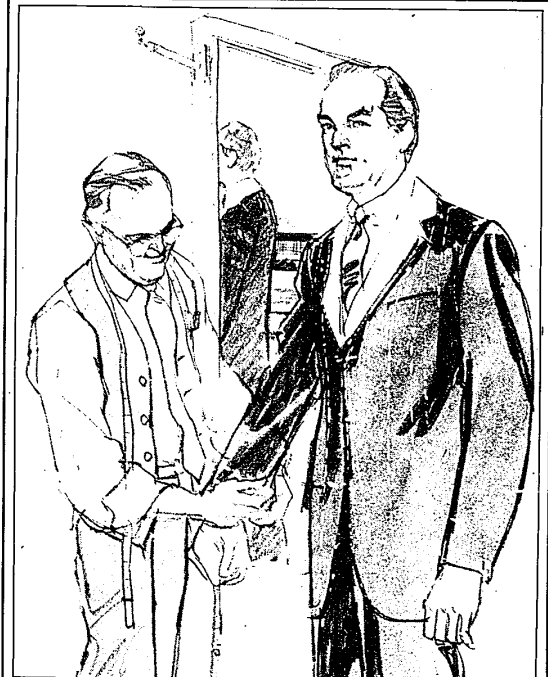
Maya Romanoff, noted artist and textile designer will be appearing in our Store for the Home to introduce upholstery adaptations of his exclusive pilangri technique (resist-dyeing). On display will be furniture available from Jacobson's featuring Mr. Romanoff's highly colorful, lively and pleasingly different designs. Mr. Romanoff will present a slide show and answer questions from those in attendance about his artistic theories and techniques.

BIRMINGHAM
Friday, September 21
9-11 a.m.

Jacobson's

Budget-minded bread-winners, do we have something for you!

Watch for it Monday, October 1, right here in your hometown newspaper



Sale of Men's Made-to-Measure Fall and Winter Clothing and Shirts.

This is your opportunity to take advantage of our custom wardrobe services at savings. You may special order suits, sport coats, slacks, and dress or sport shirts that fit comfortably and correctly while they express your individuality. You select the fabrics, styling and any detail touches you prefer. Your wardrobe is then tailored according to your personal requirements. Please allow 5 to 6 weeks for delivery.

Suits from \$240; Vested Suits from \$280; Sport Coats from \$165; Slacks from \$75; Shirts from \$18.

Sale ends Saturday, September 22.

Jacobson's

FREE PARKING JUST A STEP AWAY - WE WILL VALIDATE YOUR TICKET