



Marie O'Donnell and Hamid Dana go through a lot of changes in "Same Time, Next Year" at Somerset Dinner Theatre.

Somerset opening romantic comedy

"Same Time, Next Year," presented by Jimmy Launce Productions at Somerset Dinner Theatre, will open Friday, Oct. 5, and continue every Friday and Saturday evening through December.

Somerset Dinner Theatre is located on the lower level of the mall in Troy. A buffet dinner, prepared and served by Alfred's Restaurant, will be available at 7:30 p.m., with the show starting at 8:45 p.m.

Reservations may be made by calling 643-8865.

"Same Time, Next Year" is not only a romantic comedy but also a reflection of two and a half decades of manners, morals and attitudes in America mirrored in the changes in its two characters, George and Doris.

George picks up Doris in a California inn in 1951 and they agree to meet "same time next year." Both are happily married, each with three children, and they remain loyal to their spouses, except for their yearly brief encounter.

George starts out as an uptight neurotic accountant and over the years becomes increasingly stuffy and richer

Theater

only to give it all up, go into analysis, join encounter groups, become a latter-day hippie and end up finally back in the establishment.

Doris starts out as an awkward, undated girl, becoming in progression a restless young housewife, a student returning to college, an average flower child, a career woman with a successful catering business, and finally a settled matron.

Their transitions are never synchronized, making the contrast and change in each all the more pointed.

Clive Barnes, of the New York Times, states, "It is the funniest comedy about love to come Broadway's way in years. It has wit, compassion, a sense of humor and a feel for nostalgia. Who could ask for anything more? An enchanting evening."

Concert Guide describes entertainment centers

WRIF Radio will introduce its 128-page Concert Guide to metropolitan Detroit on Monday, Oct. 8. The publication will be available at newsstands and magazine racks in the greater Detroit area the week of Oct. 15. The book features a seating plan, box office phone numbers, mail order information, maps, building photos, a brief history and wherever possible, candid photos of 33 concert halls, sports arenas and entertainment centers in Detroit, Flint, Ann Arbor, Ypsilanti, East Lansing and Toledo.

The guide also includes Traverse City's Cherry County Playhouse and Canada's Stratford Festival Theatre. The book also contains 32 color pages of rock stars, and quotes some of them made about Detroit audiences and playing in Detroit.

"Detroit supports more concerts per year than any other city in the country," Jay Hoker, WRIF vice president and general manager, said, in making the announcement.

"DETROIT ALSO HAS a large, loyal sports audience and many other entertainment programs that draw large crowds. We felt Detroit needed this book because it's the only reference guide that includes virtually everything anyone needs to know to buy advance tickets intelligently.

"It's also the only reference guide to all the places in Detroit and the nearby areas many Detroiters frequently travel to for concerts, college football games and a variety of entertainment.

"We also did it as part of WRIF's year-long salute to the "25th Anniversary of Rock and Roll." Our 1980 Concert Guide is WRIF's salute to the next 25 years."

Proceeds from the sale of the book will go to Common Ground, a non-profit organization headquartered in Birmingham that offers a variety of "human resource services" to the area, including a

medical clinic, counseling centers, crisis intervention programs, and free courses in health, substance abuse, yoga and guitar lessons.

Common Ground also has received funding for three environmental projects, one of which includes researching solar energy possibilities. WRIF also is donating proceeds from the sale of its 25th anniversary of Rock and Roll posters to Common Ground. The posters retail for \$1 and are available through the station and selected retailers.

THE WRIF 1980 Concert Guide retails for \$2.95 and will be sold at approximately 1,100 locations in the Detroit area through Ludington News, a periodicals distributor for retailers with magazine racks and newsstands. The guide also will be distributed via Southern Michigan News, a similar service, to another 750 locations in Ann Arbor, Ypsilanti and Jackson.

The Concert Guide was produced by advertising and promotion director Ruth Whitmore. "The beauty of the book is that it makes buying tickets so convenient and easy, of course," she said.

"There's also parking information with some of the places, group ticket information, and occasional cameo profiles of some of the people behind the scenes who contributed to the success of the operation - team coach, artist manager, creative director. We even made a pitch for Orchestra Hall's fund-raising.

The guide can also be ordered through the radio station by sending a check or money order payable to WRIF 1980 Concert Guide for \$2.95 plus 25 cents handling to: CONCERT GUIDE, WRIF Radio, P. O. Box 789, Southfield, 48037.

ORIENTAL RUG GALLERY

321 S. MAIN • ROYAL OAK • 547-5000

We BUY & TRADE Used Rug

at

The Very Best Prices

HAND WASHING (No Chemicals)

REPAIRING-APPRAISALS

Outstanding Collection of Oriental Rugs

Credit Cards Accepted

NURSES

RNs & LPNs with current skills who want to get back into the profession

YOU'RE INVITED TO AN OPEN HOUSE/CAREER FORUM

At a shopping center location near you

- Saturday, Oct. 13
- 10 AM to 3 PM
- Slide talk at 11 & 2

Come and hear about:

- Top wages • Great benefits • Your choice of hours, assignments & locations

For more information and exact locations, CALL 569-4200

Medical Personnel Pool of Detroit
16900 W. Eight Mile Rd.
Southfield, MI 48075



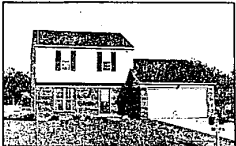
EXTRAORDINARY ESTATE. Four lovely acres with magnificent Contemporary, 6266 sq. ft. of cathedral-beamed ceilings, vast expanses of glass and breathtaking views. Plus a garden atrium and attached 2400 sq. ft. pool house with sauna. Central air, central vacuum. 80 more river front acres available. Entire parcel would make beautiful Country Club, Sport Club or Company retreat. Call 651-8850.



CHARM in Farmington. Immaculate Cape has walk-out lower level, huge deck off fireplaced family room, library plus 3 bedrooms, 2 1/2 baths, central air. 646-6000. \$117,500.



FOUR FINISHED LEVELS in spacious quad. Beautiful family and recreation rooms, 4 bedrooms, fireplace, dark room. Nosan quality built. Lovely grounds. Immediate occupancy. 626-9100. \$113,900.



NINE MONTHS OLD. Assumable mortgage enhances 3 bedroom, 1 1/2 bath Colonial in Farmington Hills. Family room ready for fireplace. Central air, earth tone carpeting. 626-9100. \$89,900.



NEW SOUTHFIELD offering has 3 spacious bedrooms, formal dining room, breakfast area, beamed family room plus many fine appointments provide comfortable living. 557-6700. \$79,900.



YOUR DREAM HOUSE on a flowing stream. Two-story Contemporary is pure luxury, custom built with everything. Private deck offers beautiful views. See your dream come true—today! 557-6700. \$256,500.



LIKE-NEW quad overlooks country club, has English Tudor perfection, library, big fireplaced family room, 3 bedrooms, lake privileges. Just listed. 651-9100. \$87,500.



CUSTOM Lathrup Village ranch features 3 bedrooms, fireplace, dining room, breakfast area, large Florida room, recreation room with fireplace. Immediate occupancy. 557-6700. \$89,900.



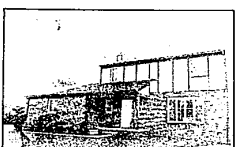
NATURAL BEAUTY frames picturesque 3 bedroom ranch in Farmington Hills. 2 full baths, 2-way fireplace in family and living rooms. Immediate occupancy. 626-9100. \$79,900.



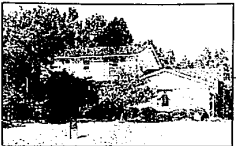
BLOOMFIELD VILLAGE. Spacious Colonial with 4 big bedrooms, 4 baths, super family and recreation rooms, 2 fireplaces, private wood deck, central air, immediate occupancy. 647-5100. \$188,900.



OVER 3,000 SQ. FT. of finished living area in "mint condition" Southfield home. 4 bedrooms, family room with fireplace, formal dining room, first floor laundry. 557-6700. \$118,000.



FORMER MODEL home has lovely soft-tone decor, family room with fireplace, 4 bedrooms, 2 1/2 baths. On large treed setting in beautiful Green Lake area. 626-9100. \$107,500.



IMMEDIATE OCCUPANCY. Opportunity in Farmington. Big Colonial offers library or fifth bedroom, beamed family room with fireplace. Just listed. 646-6000. \$99,900.



SUPER SHARP 3 bedroom ranch offers full basement, 2 1/2 car garage, park-like yard with redwood deck and patio. Immediate occupancy. 851-8100. \$49,500.

We're in tune with your musical needs.

Sales and service... we have them. Complete selection of consoles to grands, spinets to theatres... we have them. Lessons for beginners or experts... no problem. Whatever your musical needs, we're working to meet them.

Come in and SAVE!!
up to \$500⁰⁰ on organs
up to \$400⁰⁰ on pianos

MICHIGAN'S LARGEST YAMAHA DEALER

Professional Keyboard
"Where Quality, Service and Education Come First"

43907 Van Dyke Sterling Heights 739-8200
Daily 10-9 Sat. 10-6
3821 Rochester Rd. (Belt. I-75 & I-76) Troy 689-1700

Motorola car telephone keeps success in hand.

The Pulsar II

Give yourself a competitive edge.
Use Pulsar car telephone like your regular phone. Make driving time productive. Keep in touch with office, home, clients. Handle emergencies quickly. Be in even better control.

Advanced Automatic Touch System
Easy-to-use push button direct dialing means speed, safety. Store 10 frequently dialed numbers. Call them with a single push of a button. Many features.

MOTOROLA
Communications and Electronics Inc.

Call 354-6030 or write for information, or immediate demonstration!

20300 Civic Center Drive
Suite 310
Southfield, MI 48076

Name _____
Business _____
Address _____
City _____ State _____ Zip _____
Phone _____

Chamberlain REALTORS

- BIRMINGHAM 646-6000
- FARMINGTON HILLS-FRANKLIN 626-9100
- BLOOMFIELD HILLS 647-5100
- SOUTHFIELD-LATHRUP VILLAGE 557-6700
- WEST BLOOMFIELD 851-8100
- ROCHESTER 651-8850
- TROY 689-8900