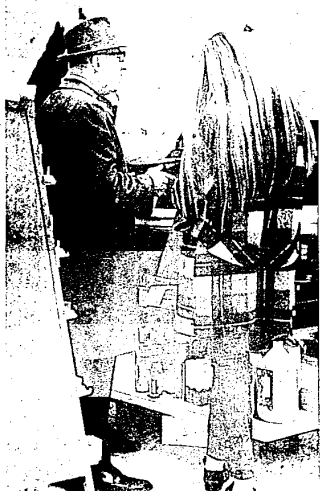


Christmas Shoppers Solve Yule Gift Problems In Livonia Mall



These parents are wondering what to pick out for Johnny and Sue



Pop and daughter decide on a gift for Mom.



Christmas list has attention of these grandparents.



Mother has hard time keeping wide-eyed kiddies in go-cart.

IN THE POCKET

By W.W. EDGAR

back in the Senior House League with a 655.

Not far behind him was Don Long, of the Homestead League with a 671.

In the Ladies Classic, Jan Vanderwill set a high for the season with games of 191, 207 and 205 for 654.

Two 700 series also marked the men's classic. Al Cogan linked games of 225, 269 and 230 for 724 and Russell Gonts had counts of 239, 226 and 235 for 716.

Third high was Bob Voss with 695. Other big counts included: John Wattles 288 in 692, Jerry Fitzgerald 658 and Bill Cooper 653.

DICK BRANDEBURG rolled in the highest series of the season at Merril-Bowl when he linked games of 191, 276 and 268 for 735 in the Senior House League.

It climaxed a scoring spree he started three weeks ago with a 289 game.

There is no doubt, the evidence is furnished at Livonia Lanes where a simple idea has mushroomed into a gigantic display.

More than a week ago it was decided to have a Christmas tree and permit the bowlers to decorate the ornaments for it. And then help trim the big pine.

Foam balls were offered and to date more than 150 have been taken with another 100 set for distribution.

"This is really something," Lois McAllister explained. "We don't think our 10-foot tree is going to be big enough."

BOB HITT, the Livonia milkman is fighting one of the best uphill battles of his bowling career in the Livonia Classic.

After getting away to a poor start he is now nearing the 100 mark in the averages and is hot on the trail of Paul Horie, the current leader, who is boasting a 195 average.

Bob has been bowling at top form for the past two weeks with consistently high counts. Don Fitzgerald was high man in the Whirlwind league with a 257 count and other jack pot scores were posted by George Merma with 233 and Jerry Donaldson with 237.

HIGH SCORES were the order of the day at Garden Lanes where Bob Kramer showed the way with a 696 — one pin more than Ray Nowacki.

Others in the upper brackets included Walter King 676, Len Nega 671, Billy Mall 669, James Teller 664 and Terry Burns 654.

Meanwhile, the Hearthside Furniture team posted an 1125 game — third high for the season.

SHIRLEY BARTOUCK had something to be thankful for, too.

Her hard work paid off when she registered a 626 series. That's not bad for a girl with a 165 average.

Other high scores among the ladies came in the F.H. Play Classic where Rose Legner had a 237 in 601. Marion Sanders followed with 598, Joan Grill with 592 and Judy Anderson with a 582.

WOMEN STOLE the spotlight at Westland, too.

Bowling in the Thursday Afternoon League, Gene Miller put together games of 215, 214 and 189 for a 618.

Then came Sally Bobbins to beat her out when she strung games of 249, 191 and 188 for 625 and Lorrin Dodde had counts of 221, 208 and 156 for a 585.

IN THE WESTLAND Classic there was a great battle for individual scoring honors. When the final pin fell Ron Fryer was out in front with a 248 in 694 and Bob Hart was only pin behind with a 631. And breaking down their necks was Jay De Shong with a 259 in 683. Dave Rorrer had high single with a 269.

HARRY VENUTE joined the honored ranks at Merril-Bowl when he converted the 7-10.

Bowling in the Golden Eagle Sportsman's Loop he slid the No. 7 over to topple the No. 10. It was the second 7-10 conversion on the lanes this season.

In the Monday Ladies Doubles Judy Laird turned in the best game a 266, but she wasn't boasting about her series.

And among the men, Ed Billings, of Rindoll's team, had a 266.

ERV WATSON, manager of Bel-Atre Lanes showed his customers how it is done.

In the Sunday Suburban Lanes he linked games of 211, 258 and 230 for 699 and came right

★ **Manager Trainee** ★

A subsidiary of IIT is searching for a career-minded high school grad or equivalent to engage in a two year training program designed to qualify applicant for:

MANAGEMENT

Liberal starting salary, group insurance and hospital plan, paid vacation, profit sharing and thrift savings plan.

INTERVIEWS FROM 9 A.M. TO 4 P.M.
MONDAY THROUGH THURSDAY
(CALL FOR MR. CONFORTE)

Phone 261-0200
28684 Ford Road
IIT AETNA Garden City
TRAINING PROGRAM U.A. APPROVED

Enjoy convenience and protection with a

Genie

automatic garage door opener system by ALLIANCE

Open and close your garage door from the comfort of your car with a Genie Automatic Garage Door Opener System. Just touch the button on the portable transmitter. Genie opens your garage door — turns on the light — closes the door — locks up tight! Automatically!

"Let Genie do it!"

Christmas Special \$99.95 up

For further information call — KE-8-0050

The ALLIANCE Manufacturing Co., Inc. Alliance, Ohio
Division of General Electric facilities corporation
MAKER OF THE FAMOUS TENNA ROTORS

SNOWMOBILE INSURANCE AND FINANCING FOR BRAVE PEOPLE WHO ARE JUST A LITTLE CHICKEN.

We realize that there are many Triple-A Members who are abnormally wild about the idea of snowmobiling, but who are just a little chicken when it comes to spending all that money for a snowmobile and for snowmobile insurance.

We don't blame you for being chicken. And we'd like to help by saving you money. Lots of it.

We'll save you money on snowmobile financing. Because we've made a special arrangement with several leading Michigan banks, you can finance your snowmobile with Triple-A Member Loan for less than you thought possible.

And we'll save you money on snowmobile insurance. Money Back, Fellow Member Collision Protection, Neighbor Care. Fast, satisfying claims service. And all the famous money-saving features of our famous Exchange car insurance are yours when you insure your car and snowmobile at Triple-A.

Snowmobile Insurance and Financing. Two more ways you lead the way with Triple-A.

PLYMOUTH 796 Perrinette Avenue 433-5200
FARMINGTON 2324 Farmington Road 476-7200
LIVONIA 22416 Five Mile Road 427-5700
WESTLAND 434 South Wayne Road 962-5100

Detroit Automobile Inter-Insurance Exchange • Automobile Club of Michigan

Korvettes

an OLD FASHION CHRISTMAS TREE

Remember old fashioned green Christmas trees? We've got them... beautifully shaped and full bodied. All of our trees are nursery grown and hand picked in the North Country by Treetek. Treetek trees last longer... stay greener. Come in and select one for an old fashioned holiday. All trees displayed standing for easy inspection and selection. Charge it.

OPEN 7 DAYS
10 A.M. - 10 P.M.

FREE GIFTS FOR THE KIDS

REDFORD
TELEGRAPH RD. and WEST CHICAGO

ROSEVILLE
GRATIOT AVE. and TWELVE MILE RD.
(1/2 mile west of 194 at 12 Mile exit)

SOUTHGATE
FORT STREET and PENNSYLVANIA AVE.