

In Exhibits:

Christmas Past, Present Featured



Theatre	Film	Industry Rating	Catholic Rating
ALGIERS DRIVE IN Wawa Road opposite Westland	The Baby Sitter Fountain of Love	X X	none none
CINEMA I	Butch Cassidy and the Sundance Kid	M	A-3
CINEMA II Livonia Mall	Magnum's Millions Fearless Frank	G	none
CIVIC Farmington	Ice Station Zebra	G	A-1
LA PARISIEN Ford and Wabasetz Clyden City	Save Rider	R	A-4
MAI KAI Farmington and Plymouth Rds., Livonia	John and Mary	R	none
PEHN Pentagon Ave., Plymouth	Ice Station Zebra	G	A-1
QUO VADIS Warren and Wayne Rds., Sopine Westland	On Her Majesty's Secret Service	M	none
QUO VADIS PENTHOUSE I	Butch Cassidy and the Sundance Kid	M	A-3
QUO VADIS PENTHOUSE II	Take the Money and Run You Can't Cheat An Honest Man	M	A-3
TERRACE Plymouth Rd., east of Meridian, Livonia	The Battle of Britain	G	A-1

Industry ratings: **X**—intended for general audiences; **M**—suitable for mature audiences (parental discretion advised); **R**—restricted—stronger material than in previous ratings; **G**—general audiences—all ages admitted; **A-1**—suitable for children under 10; **A-2**—suitable for children under 10; **A-3**—suitable for children under 10; **A-4**—suitable for children under 10; **A-5**—suitable for children under 10; **A-6**—suitable for children under 10; **A-7**—suitable for children under 10; **A-8**—suitable for children under 10; **A-9**—suitable for children under 10; **A-10**—suitable for children under 10.

It's holiday time and if the chores of shopping, wrapping presents and addressing Christmas cards is catching up to you, a visit to one of the Christmas exhibits might be a relaxing change of pace.

There are two main exhibits in the metropolitan area and another in Windsor.

Both the holiday program at Greenfield Village and the Christmas Carnival in Cobo Hall, sponsored by the City of Detroit are annual events.

In Windsor, the Christmas exhibition at Willstead is open through Jan. 31 under the sponsorship of the Art Gallery of Windsor.



KISSING BELL — The great great-grandparents of this young lady probably knew the Christmas kissing bell much better than she does. The 18th century Christmas decoration is just one of reminders of Christmas Past now on display in Greenfield Village.

DETROIT'S Christmas Carnival is open from 9 a.m. to 9 p.m. daily with the exception of Christmas Eve and the last day, Dec. 28, when closing time is 6 p.m. The exhibit will be closed on Christmas Day.

Admission to the Carnival is free.

Included in the show are 16 live entertainment shows daily on Saturdays and Sundays and 14 daily during the week.

Three puppet companies, including the Detroit Parks and Recreation Puppeteers, a magic act, fairy tale characters and a popular television clown are on the entertainment bill.

Every youngster attending has an opportunity to have a personal chat with Santa Claus in his ice castle and each is presented with a lollipop and comic book. New this year is closed circuit television in the castle which will permit parents to eavesdrop when their children tell Santa their Christmas wishes.

Also new for the 1969 Carnival are the "Snowball Throw," the "Panda Slide," "Santa's Physical Fitness Playground" (one of three play areas), and the ceiling-high Santa Claus figure which is the central figure of the show.

Other popular participation displays returned from previous shows are the "Bookworm," "Telephones to Santa," the "Snowman Slide," the "Dickens' Christmas Village," the 170-foot Nature

taken aroma of mince-meat, long a Christmas favorite, greets them from the simmering pot on the wood burning stove.

At the Edison Homestead, visitors see a family holiday actively recreated. Taffy bubbles on the stove in preparation for the traditional taffy pull recalling the day when neighbors gathered from miles around to work the gooey mass into chewy candy.

Amidst the simple decorations and the strains of "Greensleeves" in the background of Cotswold Cottage, the aroma of bread baking in the ancient hearth over excited memories of an era all but disappeared.

IN THE MUSEUM, 34 skilled artisans participate in "The Crafts at Christmas" exhibit. Some of the exhibits show skills that were developed in the home, while others are specialized crafts that were essential to the community and whose practitioners were held in high regard by those who patronized them.

Home crafts such as candle making, spinning, weaving, rug hooking and cookie baking show how earlier American households prepared for the holidays. The potter, the printer, the glassblower and the pewterer on the other hand, show how their counterparts in past Christmases made objects for gifts.

These exhibits are included in the admission charges to the village and museum, located in Dearborn.

THE WINDSOR exhibit is based in the original Walker Homestead, Willstead. In the City of Windsor. Sponsored by the Art Gallery of Windsor, the exhibit features the 15th century Italian wood carving "The Nativity" from the collection of the Detroit Institute of Arts.

The more than five-foot-high panel is installed as a special welcome to the Gallery on the stair landing and is displayed against the rich red of velvet and the deep blue of stained glass.

As visitors enter the Stephen Foster birthplace, the unmis-



DICK BENSEK

Swiss Cheese Fondue is a famous dish of Switzerland. Skiers find Fondue their favorite feast. Eaten indoors beside the fire, it can be yours too, ready to enjoy about five minutes from the time you put low heat under the pan. It can be prepared in an earthenware casserole or chafing dish with a handle. When the Fondue is ready to eat, each person sits around the dish and with a fork spears up hunks of white bread, preferably with the crust on one side. They dip the bread into the hot, melted cheese. Mmmmm Good! How about getting your Fondue recipe out and surprise your friends real soon!

Surprise the family this Holiday Season, bring them to DANISH INN, 32305 Grand River Avenue, phone 476-5200, for dinner. In addition to turkey, you'll find a wide selection of entrees on our menu, something to please everyone. Pat Flowers plays memorable jazz, boogie and classical music just as he did for many years at Bakers Keyboard Lounge. You can hear him nightly Tuesday and Saturday from 8:30 p.m. to closing. Have a Happy Holiday!

CLOSED CHRISTMAS DAY AND NEW YEAR'S DAY

HELPFUL HINT — Parboil sausage or roll in flour before frying to prevent bursting.

where Dine and Dance

REDWOOD LOUNGE
28121 Plymouth Road
GA 1-1929

Favors - Food - Fun
For Guaranteed Reservations Call
GA 1-1929
\$10.00 per couple

Dancing to the
WES ROBERTS TRIO
No Increase in Prices

VALUABLE COUPON

50¢
OFF ON MEDIUM OR LARGE
PIZZA
Pickup only
SUNDAY thru THURSDAY ONLY

Sun - Thurs. 4-12 p.m.
Fri. - Sat. 4-2 a.m.

AMATO BROS. PIZZERIA
INKSTER and SCHOOLCRAFT
GA 7-7220

Happy Holidays

two dining rooms and cocktail lounge for your dining pleasure

Open Daily and Sunday

CANTONESE SELECTIONS and American Cuisine

Carry-Out Service
Telephone 477-5646

30687 Grand River Ave., Farmington

MARCO'S
on Grand River (West of 10 Mile)

Have a Wonderful Time
New Year's Eve

*NO COVER CHARGE
*FAVORS FOR ALL

3-piece Combo for your dancing pleasure!
MAKE RESERVATIONS NOW! Call GR 4-9726

V.F.W. MAYFLOWER POST 6695
1426 S. Mill, Plymouth

NEW YEAR'S EVE DANCE

December 31

Set-Ups, Snacks, Buffet Dinner and Dancing

B.Y.O.B.

\$15.00 per couple
phone 453-3389

9:30 to 2 a.m.

colonial lounge

New Year's Eve Entertainment

19170 FARMINGTON RD.
(at Seven Mile)
OPENS 6 p.m. SUNDAYS

FEATURING
Ron Codin
Phil Marcus Esser
Hank Phillips

FINE FOOD DANCING

PHONE FOR RESERVATION
PHONE 453-2200

THUNDERBIRD INN
14707 NORTHVILLE ROAD
PLYMOUTH

IT'S LATER THAN YOU THINK
Call for Your New Year's Reservations Now!
CAPTAIN'S CHAIR LOUNGE
INKSTER at SCHOOLCRAFT KE 2-0506

BAA Sets Winter Session

Bloomfield Art Association begins its 10-week winter session of Studio art classes Jan. 19, with a curriculum that covers almost every medium of art and level of ability.



Are you plagued by a smoking fireplace? Well, there might be several reasons for this. Is the flue clean? Is it possible that the chimney could be extended more, thus relieving the problem? The minimum height for a chimney above a peak roof is two feet. Extending it somewhat higher won't hurt. It's a good idea to ask a competent chimney mason to inspect. It's also possible that the fireplace opening is too large for the size of the flue. Check this by holding a board over the top third of the fireplace and seeing if the fire burns better and cleaner. This concentrates the draft somewhat.

Concentrate on your repair or remodeling problems knowing that you can find the supplies you want when you need them at AMERICAN HARDWARE & SUPPLY CO., 31245 W. Eight Mile Road, 476-6240, 537-2645. We are a super department store for the home with a folksy, neighborly spirit of helpfulness. Merry Christmas! — from all of us at American Hardware.

Master's Work Set For Exhibit

DETROIT
"Rembrandt After 300 Years" will open in a special exhibition in the Detroit Institute of Arts Feb. 25.

The exhibit will continue through Sunday, April 5.

Organized by the three cities of Chicago, Minneapolis and Detroit at a cost of nearly \$350,000, the show of 500 works by the Dutch master and key pupils just closed this past weekend in Chicago with a 46-day attendance of 206,193 persons.

The massive exhibition marking Rembrandt's death 300 years ago will be displayed in 10 galleries of the Institute's South Wing. A \$1 general admission charge will be made for the exhibit.

PHONE
476-6240-537-2645

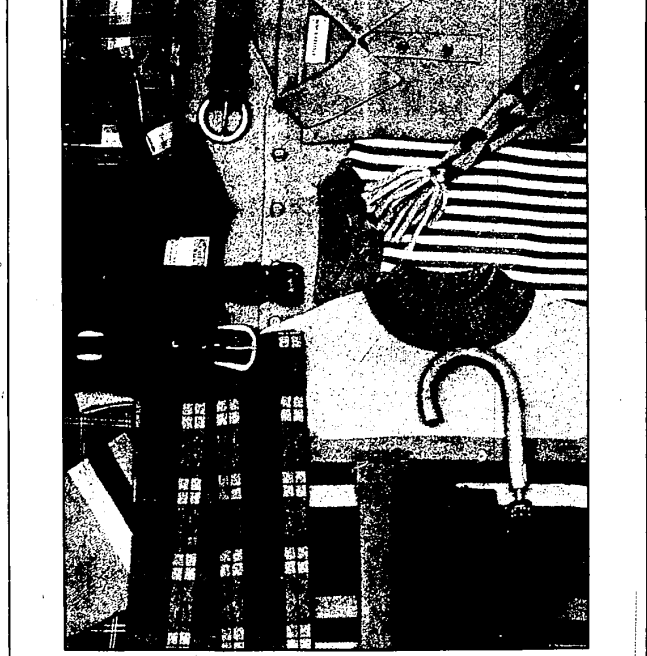
AMERICAN HARDWARE SUPPLY CO.

COMPLETE FIREPLACE FIXTURES AND EQUIPMENT.
FIREPLACE WOOD

Eight Mile and Merriman Roads

OPEN DAILY 9 a.m.-9 p.m.
SAT 9 a.m.-9 p.m.
SUN 10 a.m.-5 p.m.

Ample FREE Parking



Gifts For The Men In Your Life

Men's and Boys' (from Size 6)

John Smith
OF PLYMOUTH

Men's and Boys' CLOTHING (from size 6)

OPEN MONDAY thru SATURDAY 9 - 9