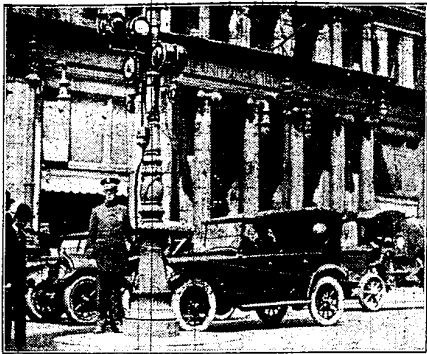


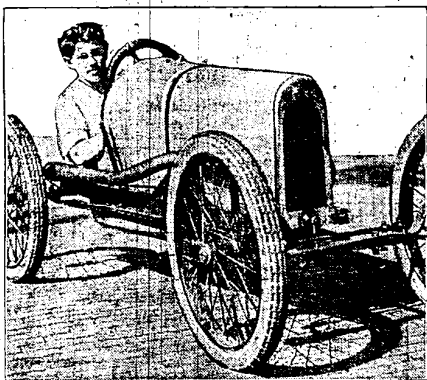
# AUTOMOTIVE SECTION

## NEW TRAFFIC SIGNAL TRIED OUT



This device for regulating traffic on busy street corners was tested the other day at Broad and Arch streets, Philadelphia. It is electrically operated and equipped with red, green and white lights. The green light warns pedestrians to hurry across as the red will follow immediately.

## MINIATURE AUTO BUILT BY BOY



This miniature automobile, built largely of parts of a motorcycle, is capable of attaining a speed of 60 miles an hour. It was built by Harry Hagib, a Cincinnati high school student.

It took the youngster almost six months to build the "speedster," but when the fact that his "work shop" was the cellar of his home and his tools were crude are taken into consideration, the finished product is a marvel of mechanical skill.

The motorcycle engine is air-cooled; therefore Harry did not have to bother with a radiator. The Hagib special weighs less than 500 pounds and will make from 30 to 40 miles on a gallon of gasoline. Standard motorcycle wheels and tires are used.

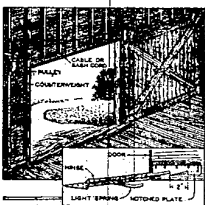
The photograph shows Harry in his "speedster."

## GARAGE DOOR CLOSED BY PASSAGE OF AUTO

Wheels of Vehicle Pass Over Tripping Device.

Door Is Counterweighted So That When Trip Is Released, Weight Pulls Door Shut or Open as May Be Desired by Driver.

An easy-running garage or barn door may be arranged, as shown in the drawing, to close itself as soon as the rear wheels of a vehicle pass over the tripping device. The door is counterweighted so that, when the trip is released, the weight pulls the door shut. The trip, or release, consists of a hinged plank arranged, as indicated, to engage with the latched plate on the door; this plate has two notches, one of which engages with the plank.



A Simple Device That Automatically Closes Sliding Garage Doors After the Passage of a Vehicle.

In the extreme open position. A spring on the underside of the plank holds it in engagement with the notches. In operation, the front wheel of the vehicle pushes the trip down and the door is released until the catch engages in the second notch, which is about 2 inches back of the first. The rear wheel disengages the catch from the second notch and the door rolls shut. The door travel should be adjusted so that it will clear the car as it shuts.—Popular Mechanics Magazine.

## HARD TO GET PROPER IDLING

Trouble Usually Caused By Spark Plug Gap Being Too Close—No Fault of Carburetor.

Owners of cars containing small-bore six-cylinder engines sometimes complain of the difficulty of obtaining proper idling. The owner usually assumes that the carburetor is at fault. As a matter of fact, the trouble is usually caused by the spark plug being set too close. This causes the motor to roll when idling; with all the symptoms of loading. By increasing the spark gaps and cleaning the plugs the trouble will be cured.

## AUTO CARE DURING SUMMER

Radiator Should Always Be Kept Filled and at Intervals Flushed Out and Refilled.

During the summer season motorists should give frequent attention to the radiator, advises a motor car manufacturer. "It should always be kept filled, and at intervals it should be flushed out and filled with clean water. In connection with efficient operation of the cooling system, fan belt adjustment should be made, for the fan is needed in summer. The position of the spark lever should be watched to see that it is kept in an advanced position, thus assuring better cooling of the motor.

Minor parts, such as spring shackles, wheel bearings, steering connections and universal joints, require oiling more often in summer. It is wise to use a heavier grade of lubricating oil than in colder weather, and oil should be drained from the motor at intervals not to exceed every 1,000 miles.

## AUTOMOBILE GOSSIP

Sixty per cent of the production of gasoline is used by motor vehicles.

At one time it was considered unconventional for a woman to drive her own car.

Twelve thousand motor vehicles are operated by rural schools in the United States.

Muffler cutouts are prohibited on any public highway in the state of Pennsylvania.

A motor trip from Paris to Verdun, through the devastated regions and return costs 245 francs.

Street cars have the right of way between cross streets over all privately owned vehicles in Kansas City, Mo.

Since 1899, the first year in which statistics are available, there have been built in the United States 11,839,438 motor vehicles.

Advertise in this Section

## Fordson Farm Tractor

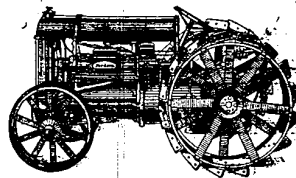
On the farm, just as in the big factories in the city, the machine way of doing things is quicker, easier, better. The Fordson way is the machine way of farming. It will help you to raise more per acre, thus increasing your income. It will help you to do more work in a day. It will lighten your work; and make your work easier for you.

The Fordson does not stop with the field work. It is a flexible, all around power plant, ready for use during the entire year, and at a remarkably low cost of upkeep. And there's work for the Fordson on every farm every day in the year.

The Fordson is very simple to operate—a school-boy can drive it.

We will be glad to explain it to you, and tell you why it is a profitable investment. Come in and see us.

Made by Henry Ford & Son and sold by



O. RUSSELL  
**FORD SALES & SERVICE**  
FARMINGTON, MICH. PHONE 113.

## STATISTICAL NOTES

The wine production of Madeira for 1920 is estimated in excess of 1,320,000 gallons, a 30 per cent increase over 1919.

The telephone wires in the United States aggregate 28,837,138 miles—enough to girdle the earth at the equator 1,153 times.

The girl who used to marry a man to cure him of the liquor habit now marries him to get money to buy nut sundae for herself.—Bett Moses in Detroit Free Press.

## FROM THE PENCIL'S POINT

A woman with a fiery temper isn't necessarily warm-hearted.

It's easy to see the point of a joke that's on the other fellow.

Some men rob widows and orphans and try to square themselves by giving 10 per cent to the Lord.

In Philadelphia the tax on automobiles according to their capacity, the tax being \$2 on a garage holding two cars.

If strips of brake lining are tied around the jaws of bars used to bend plated or enameled levers, axles, headlight rods, etc., scratching will be prevented.

## BELIEFS ABOUT DOVES

There is a belief that the pigeon has no gall. The story goes that pigeons have no gall, because the dove sent from the ark by Noah burst its gall out of grief and none of the pigeon family has had a gall ever since.

To feed strange pigeons will bring true friends.

Turtle doves in your house are said to banish rheumatism.

In Scotland a white dove followed by a black dove means illness followed by joy.

The pigeon is supposed to look well to its own stomach; hence pigeon-toed people are said to be stouy.

When a pigeon perches upon the house in Hindustan the owner takes it to be a forerunner of ill luck.

In India if a young woman whose husband is away sees a pair of doves, it is a sign that he will soon come back to her.

In Lancashire the appearance of a white dove at the window means either a recovery or else a good angel to take away the soul.

If you hear the first notes of a dove in spring while you're lying down, you will have ill health all the year; if you are walking, it's feet health; if flying, moderately good health.

## BEST TIRES AT BEST PRICES

U. S. TIRES—PLAIN—USCO—KNOBBY—CORD  
GOODYEAR GOODRICH

BUY YOUR TIRES NOW

FORD SALES & SERVICE

## Jones Drug Company

DETROIT, MICHIGAN

2081 Grand River Avenue, Opposite Loop

and

Grand River Avenue, Corner Joy Road.

## GENERAL HAULING

THREE TEAMS

All Kinds of Teaming Work.

GRAVEL HAULING — GRADING AND EXCAVATING  
PROMPT SERVICE

Perry Wixom

Phone 109-J-2.

Farmington, Mich.

WE OWN AND OFFER:

**\$25,000**

**Detroit Edison First**  
**and Refunding 6's, July 1, 1940**

Price, 88 and interest. Yield 7.15 Per Cent  
Tax Exempt in Michigan.

GEORGE M. WEST & COMPANY

Established 1893

1010 Union Trust Bldg.

Detroit.

## MAXWELL

THE GOOD MAXWELL AT

**\$845.00**

IS THE BEST BUY ON THE MARKET

WITH TWO UNIT STARTER AND GENERATOR. HOT  
SPOT MANIFOLD. HEAVY REAR AXLE. FINE LINES  
AND EXTRA FINISH.

AN EXAMINATION AND DEMONSTRATION IS CONVINCING AND PLEASING.

CALL FOR DEMONSTRATION

**Lee Garage**

Phone 62. — — — Farmington, Mich.

Garfield 1201.

W. E. KLEINER CO

"Whitest Service On Grand River."

AUTO SUPPLIES AND LUBRICANTS

Vulcanizing, Tire Repairing and Battery Service

Ford Magneto Re-Charging

Authorized "VESTA" Service Station

Old No. 2081 Grand River — New No. 8623 Grand River

DETROIT, MICH.