

2 state Congressmen discuss auto plight

By Mike Scanlon
staff writer

If Japan fails to voluntarily limit auto exports to the U.S., Congress may impose more severe trade restrictions, U.S. Sen. Donald Riegle and U.S. Rep. William Blanchard agreed last week.

But the voluntary restrictions Riegle wants to see sound severe already.

Appearing with Blanchard at a University of Detroit seminar on business

in the 1980s, Riegle, a Democrat, called for voluntary restrictions of 700,000 units a year. That's nearly a third of the current 2.2 million annual U.S. sales of Japanese imports.

Blanchard didn't think it would happen.

"The only realistic course is a voluntary agreement with Japan, but we are moving so slowly I think the best thing we can do is assume we're not going to get it," said Blanchard, D-Pleasant Ridge, a key congressional architect of the Chrysler aid package.

Both men agreed that import imbalances are a problem far from unique to the automobile industry.



U.S. Sen. Donald Riegle (left) and U.S. Rep. William Blanchard (right) agreed at a conference last week that import imbalances are a problem far from unique to the auto industry.



"THE FACT IS there is an industrial crisis in the Great Lakes heartland," Blanchard said.

"Not just in automobiles, but steel, rubber, glass and, most important, parts suppliers. As you look at these basic industries you will see they are the basis of defense mobilization in any serious crisis, something I think is often forgotten."

"I don't think we can afford to become a country that sells blue jeans

and Burger Kings and nothing else," Blanchard added.

"I'm essentially a free-trader," said Riegle. "The problem is I don't think we really have a free trade relationship in the transactions in autos and trucks. . . I don't think it fits the textbook model within a million miles."

"When Japan is sending in 2.2 million cars, taking back 20,000 of ours, that does not meet a reasonable definition of either free or fair trade."

TRADE RESTRICTIONS are a short-term answer, Riegle said, to the problems caused by the sudden turnaround in demand by American car buyers from large to small autos.

"The situation we're in is a very unique one. It's a transitional one," Riegle said, calling it a marketplace phenomenon that has left the American auto industry "highly vulnerable to a predatory trading partner."

Japan, Riegle said, is "taking advantage to an excessive degree."

Also appearing on the panel and calling for trade restrictions was UAW Vice-President Marc Stepp, but Stepp said the two largest problems besetting the auto industry now are "what we in the UAW call the two Rs — recession and Reagan."

"It is clear that the new Reagan budget systematically turns its back on the problems of the unemployed," said Stepp, adding "Ways must be found to persuade the president that there is a legitimate federal role" in preserving older urban areas and the jobs they contain.

... while others agree on need for jobs

By Mike Scanlon
staff writer

Creating jobs is the biggest goal and inflation is the biggest obstacle facing the metropolitan Detroit economy, a panel of local business, labor and banking leaders agreed last week.

Speaking at a University of Detroit seminar on business in the '80s, they agreed that southeast Michigan has natural advantages as a place to do business, including secure sources of energy, well-developed transportation systems, plenty of water and a highly skilled workforce.

But "the economic fundamentals will never reassert themselves until our biggest obstacle is removed, and that obstacle is inflation," said David Littman, a spokesman for Manufacturers National Bank.

There are other problems too, Litt-

man said, citing higher costs as well.

"It's hideous if you ever look at the relative costs in this state compared to our competing states, North Carolina, Indiana."

IF ANYONE doubted it, the panel also quickly established that these are bleak days indeed in Detroit.

"Detroit's workforce is now at the lowest level since the 1930s," said New Detroit spokesman Frank Hennessey, calling it a "regional depression" that has sparked a 15-to-1 ratio in people leaving the area compared to people moving in.

"Nearly 60 percent of Detroit's population is receiving some form of government assistance," he said.

"We really need a solid plan to attract business. We're competing against other states, we're competing against other nations," Hennessey said.

"THE PROBLEM we face is enormous," said Arthur Saltzman, who represented the Greater Detroit Chamber of Commerce.

"The answer is for people to innovate, be creative and understand that we have to have a pinpointed program available for the entrepreneurs in this region."

But Saltzman said the region's historical dependence on the automobile industry means there has been little in the way of attempts at attracting new businesses so far.

"There isn't even a pamphlet representing the Greater Detroit area, let alone a pinpointed marketing program," Saltzman admitted.

BEST is having a SALE



on

Cabin Crafts Carpets

Cabin Crafts Carpets are the most touchable carpets ever made! Fashionable as tomorrow, luxurious and inviting. Available in an assortment of magnificent colorations. For your living room, dining room, family room, bedroom floor, it's an understatement to say the decorating results will be sensational.

Limited time offer

Sale ends May 2 - So Hurry!

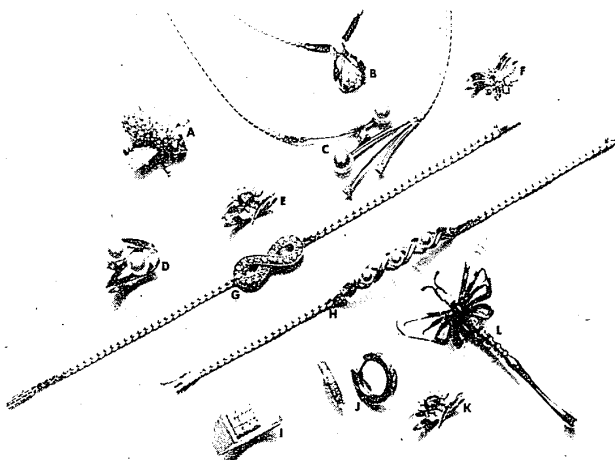
Best carpets & area rugs

WOODWARD AT 1 1/2 MILE — 543-5300
Excellence In Style & Craftsmanship Since 1949

Semi-Annual Diamond Sale

Last three days to save

10% to 33% on
every diamond and precious stone
in our sparkling collection



It's our multi-million dollar spectacular of those sparkling wonders of the world, diamonds. What everyone wants for anniversaries, birthdays, graduations, Easter, anytime. To wear at their neck, their fingers, their ears, their hat, their lapel. They're a luxury; they're an investment. They're everything you want them to be and they're on sale right now at Hudson's. Along with our entire collection of rubies, emeralds and sapphires, in rings, pendants, bracelets, solitaires, engagement sets and gentlemen's rings. All in 14K and 18K gold. So hurry in, make a brilliant move, and save now through April 11. And remember, Hudson's accepts all diamonds for trade-in. Selection will vary by store, in Fine Jewelry.

Save 1/3 on selections from the Rosenthal Collection:
A. Pearl and diamond bee pin, reg. \$875, sale \$577.
B. Diamond solitaire pendant, reg. \$835, sale \$550.
C. Pearl and diamond necklace, reg. \$1,050, sale \$693.
D. Pearl and diamond ring, reg. \$525, sale \$353.
E. Ruby and diamond ring, reg. \$835, sale \$550.

F. Diamond cluster ring, reg. \$1,895, sale \$1,250.
G. Flexible diamond bracelet, reg. \$1,275, sale \$841.
H. Diamond and pearl bracelet, reg. \$550, sale \$363.
I. Man's cluster ring, reg. \$1,050, sale \$693.
J. Diamond hoop earrings, reg. \$890, sale \$587.
K. Sapphire and diamond ring, reg. \$835, sale \$550.
L. Coral and diamond mayfly pin, reg. \$875, sale \$577.

*Northland, Eastland, Oakland only.
**Oakland only.

Come view our unique collection at our Diamond Sale trunk shows.

Our designers will be on hand to advise you while you view their sample collections. In Fine Jewelry.
Thursday, April 9, at Oakland and Northland, 11 to 8 p.m.
Friday, April 10, at Twelve Oaks, 11 to 8 p.m.
Saturday, April 11, at Oakland and Twelve Oaks, 11 to 8 p.m.



Treat your taste
to new pleasures
in Hudson's
Restaurant

We're celebrating our 100th Anniversary with scrumptious specials. Our all new expanded menu includes favorite dishes from the past (like Chocolate Walnut Meringue Torte) and present (our famous Maurice, naturally). Plus a new section of "Fashionable Fare," featuring a selection of creative natural dishes. Try our Fruit Strudel Sandwich Plate, for instance. But do come and enjoy!

hudson's

hudson's