

How To Mix Furniture Styles

First, determine the environment you want. A formal environment is generally comprised of materials which have expensive connotations, such as silk and satin, silver and gold. Great attention to detail in carpets is characteristic, as is elaborate treatment and workmanship. Such rooms look expensive—and are.

Informal rooms are generally of inexpensive materials, such as iron and copper, tweeds and nubby fabrics, and feature simple designs with bold detailing. Ease of maintenance is usually a hallmark.

Mix styles as you mix people at a party. You would make sure all had common interests and would be comfortable together. Thus, French provincial, American Primitive and Spanish provincial would

mesh well. Royalty-Louis Quinze and English Regency, for example, would be comfortable together. You can mix all provincials, and all elegant furniture can go together, but, as a rule, provincials should not be combined with more formal furniture.

The most important element in mixing furniture styles is planning. Your key to this is the floor plan—without which you are apt to run into the aesthetic problem of poor balance and the more practical problem of traffic jams.

To make a simple floor plan, buy some graph paper marked off into one-quarter inch squares. Then, draw on one of the sheets the dimensions of your room to a scale of one-quarter inch equals one foot. In the appropriate places, mark off windows, projecting beams, and doors. Indicate by drawing an arc how far each door will swing out into the room.

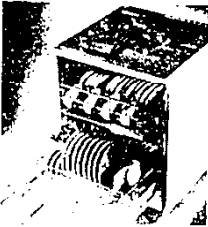
Outline each piece of furniture you are planning to get in simple block form, drawn to the same scale.

BRIDAL SPECIAL

Modern Maid Portable Dishwasher

- Front loading convertible
- Hygiene wash and rinse
- Whisper quiet
- Built-in food grinder
- 2 washes - 4 rinses
- 2 spray arms
- 20 year tub guarantee

ONLY \$224⁹⁵ WDW 376



BRING THIS AD IN AND YOUR BRIDE MAY RECEIVE 10% DISCOUNT ON ANY APPLIANCE IN STOCK



11970 Farmington Road Between Schoolcraft and Plymouth Road
LIVONIA 261-5110

BRIDES



meet:
Sandra Richards

who can help you with paint and wallpaper to make your new apartment or home into a desirable haven to suit your individual taste.

Pease
Paint & Wallpaper Co.

570 South Main Street
Plymouth Phone: GL 3-5100

JUST ARRIVED at Our REDFORD STORE ONLY Deluxe 7-pc. Dinette Sets



YOU'LL SEE DOZENS of the very newest designs in dinette and dining room sets. Every style. Every period. Every color you can name. And due to a spectacular special purchase, you'll see the exact set you've been hoping to find — at a price you never thought possible. SHOP TODAY WHILE SELECTIONS ARE COMPLETE!

SAVE TO 40%
Values from
\$99 to \$169

\$66

TRUCKLOAD PURCHASE direct from the manufacturer saves you up to \$101. Each superbly-crafted set features an extension table 36"x 48"x60".

IN STOCK FOR IMMEDIATE DELIVERY!

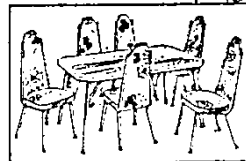


MANY STYLES! COLONIAL • MODERN • SPANISH, etc.

The spill and stain resistant plastic top comes in leather-tones, wood grains and pattern designs. All SIX CHAIRS have vinyl-upholstered, cushioned seats and backs.

OPEN DAILY 9:30-9 p.m.
OPEN SUNDAY
12 to 5 p.m.

Deluxe Quality
At An Incredible
Low Price!



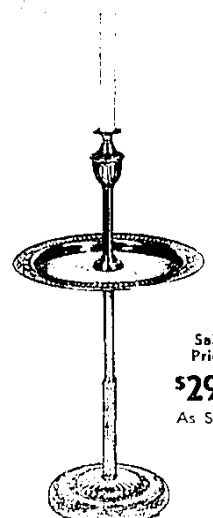
ARE YOU PLANNING
A WEDDING?
You Save Money
at Brennan's
Bridal Shop!



Skillfully trained designers will assist you. Also Bags, Hats, Whimsies for the bride and groom's mother and jewelry. We also make custom hats with your own fabric.

BRENNAN'S HATS
EL 6-0798
NORTHLAND
Parking Lot J

FOR THE NEWLYWEDS
Elegance...
AT PRICES YOU CAN AFFORD



Sale
Price
\$29⁹⁵
As Shown

Several other styles from which to choose.

Irv Margolis
33125 PLYMOUTH ROAD
at Farmington Road
PHONE 261-6510

ALL 6-STORES OPEN DAILY 9:30 TO 9

Star Furniture

25525
W. 8 Mile Road
Between Telegraph
and Booch-Daly
538-9510