

Here Comes The Bride! She Never Looked More Beautiful Than Now

In this day of the fashion individualist, bridal gowns too, reflect the desire of today's woman to be totally her own person and to have a wedding which reflects the life styles of herself and her groom. No one wedding gown is the only right gown to wear anymore, and although the bride tends to do her own thing within the bounds of tradition, even tradition is being bent a little.

Gone are the days of the girl who looked like a walking wedding cake, and in her place is today's bride, with a silhouette of high necks, long full sleeves, high waisted dirndls with full circular skirts. She is as apt to wear ivory as white, and her gown may be accented in color with maids in matching plaid.

Natural waists are coming, but are not yet popular, with instead, the waist slightly above the natural line important, as is a full circular skirt of layered sheer fabric. The dirndl is the preferred full shape, not the bouffant. A-line or skimmers flatter, as do empire or high-raise waists, but don't look as new as the dirndl.

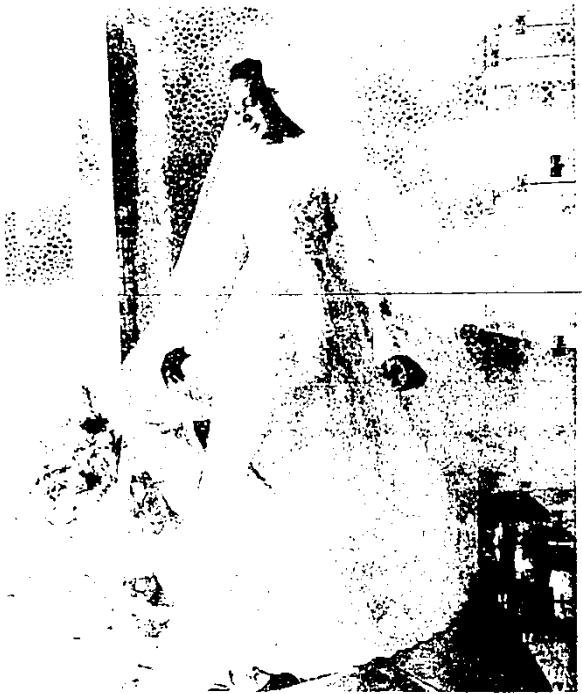
The low scooped neck with the traditional pearl necklace is seldom seen, with high necks taking their place. Band necks, ruffled necks of sheer fabric or lace, accented mandarin necks and a simple neckline of lace ending above the collarbone are all used.

Sleeves are beautiful, and, in many cases, a fantastic sleeve makes the dress. The long full bishop sleeve is lovely, cuffed or plain. The bell sleeve, either elbow or long, is also good. The lantern (shaped like its name, but sometimes called the Punchinello or Juliet) is the biggest news, and is usually a combination of two fabrics to give it body. Sleeveless gowns are not worn, and, although a short teacup, puffed or plain short sleeve is sometimes offered, today's bride opts for a long full sleeve. The reign of the detached train has ended, with more and

Continued on Page 4



GOWN FOR A bride of yesterday, today and tomorrow. Lines go high, focus interest on bride's face. Head-hugging cap holds yards and yards of illusion veiling. Important new features include attached train, venise lace trim, dimensional embroidery and heading. Gown and headpiece by Galina.



ICE BLUE SILK organza is the color on the cake in this gown by Priscilla of Boston. High wedding band collar and dimensional white lace flowers are important. Mantilla crown is split to make it easier to manage the cathedral train. Even though the sleeves are slenderer than many of today's offerings, horn shape is more delicate than the older tight, pointed sleeve.

Play it
most colorful
with
"Matchmakers"
underneath-it-all!

HOLLYWOOD *Vassarette*

Begin with a "Young Beauty"
bra of lovely Ban Lon® nylon lace! Adjust-
able stretch straps and sheer body of nylon-
Lycra® spandex give a most beautiful fit. Carry
out the color in this Antron® Nylon tricot petti-
coat with deep side-slashed nylon lace hem.
Select these "Matchmakers" in your own favor-
ite color.

Bra 4063, A 32-36; B,C 32-40, \$4.50; D, \$5.
Petticoat in Demi and Short, P-S-M, Av. S-M-L, \$4.

TWO STORES
TO SERVE YOU
FARMINGTON PLAZA
476-1450
PLYMOUTH
S. Main at Penniman
455-0316

Arvi's
SUBURBAN CASUALS